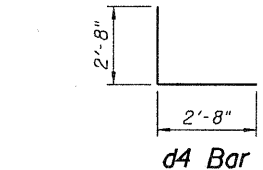
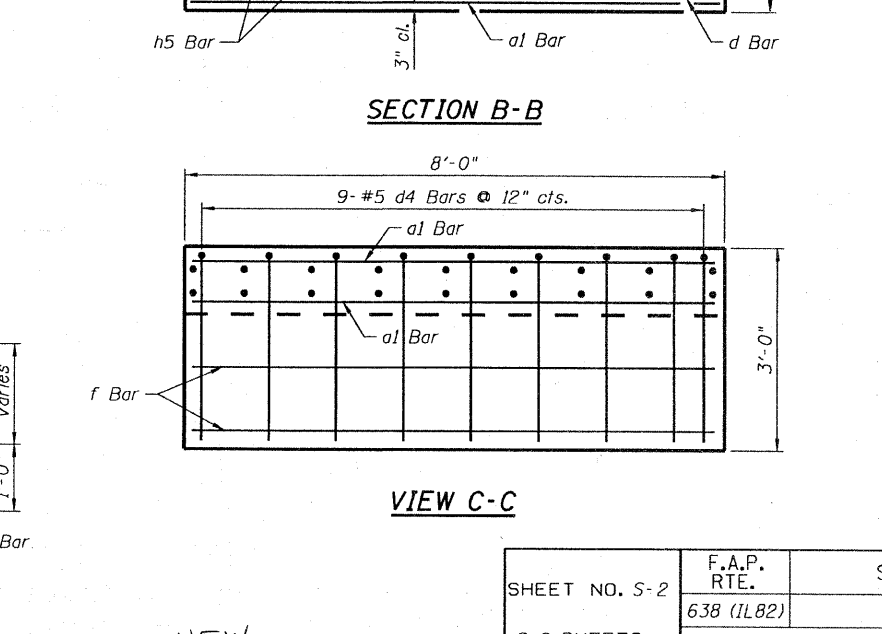
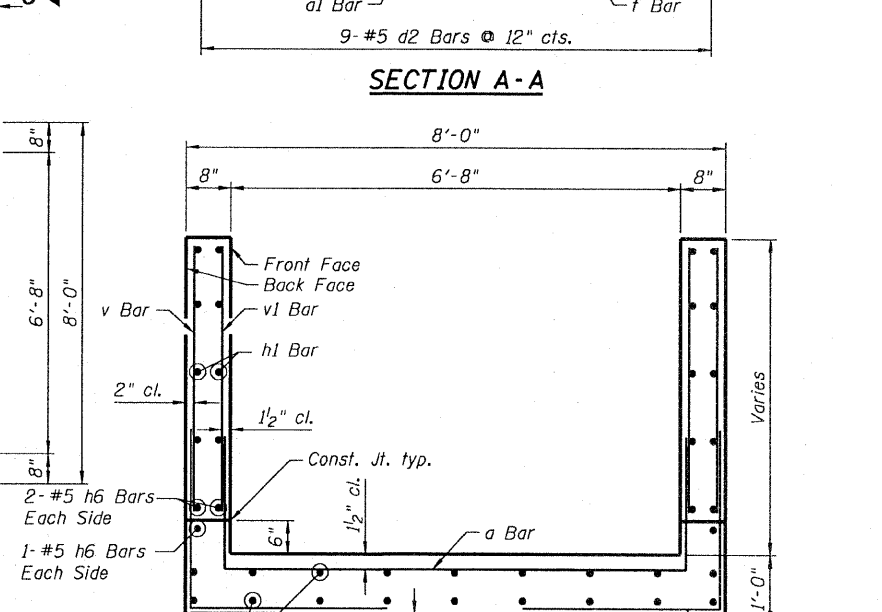
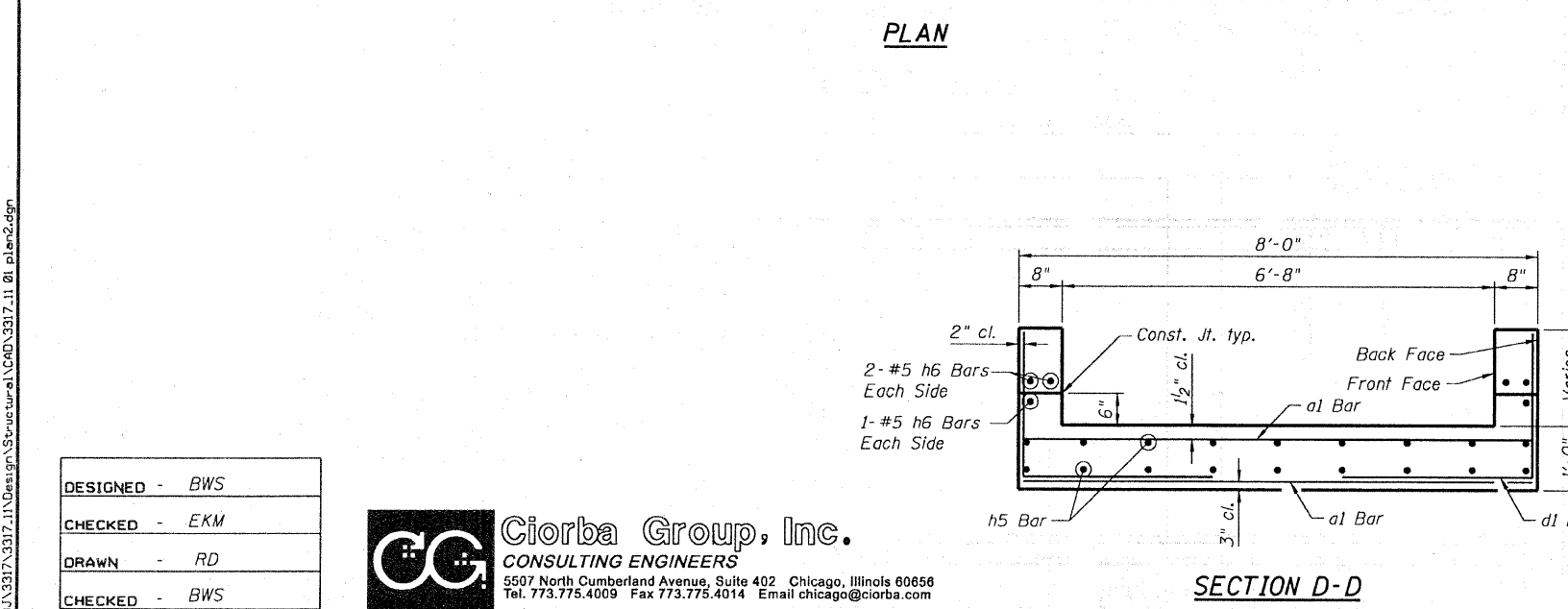
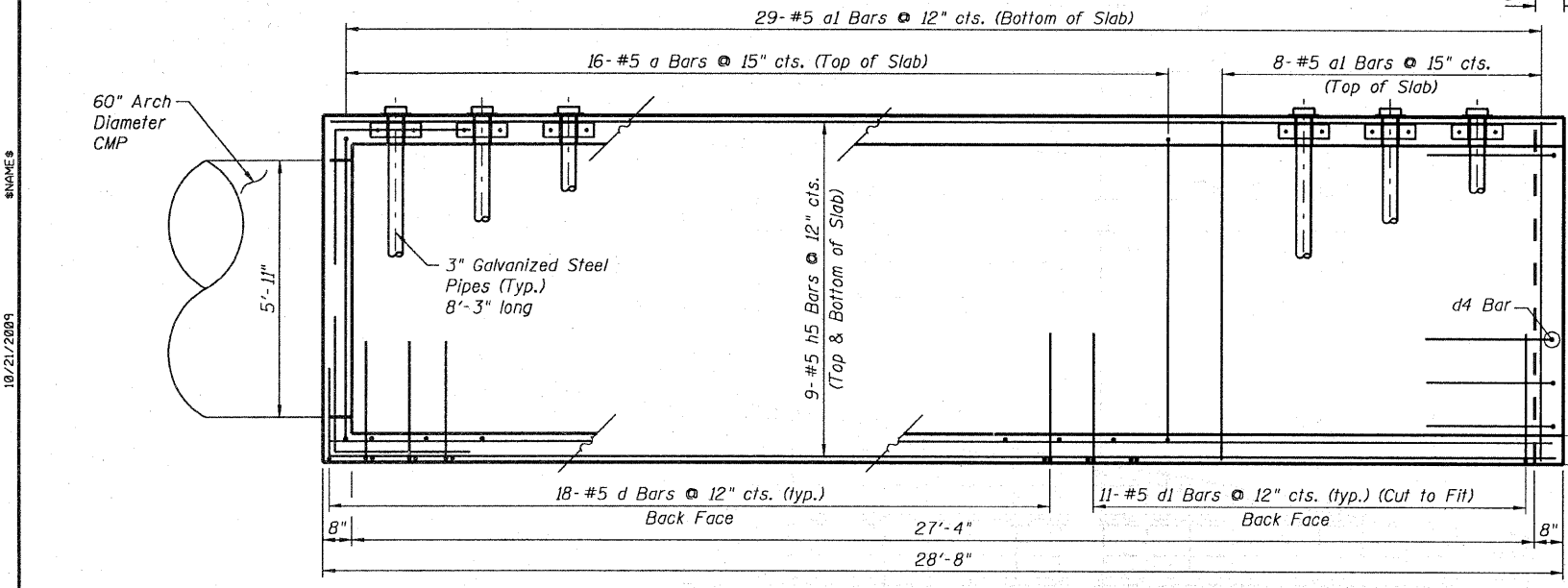
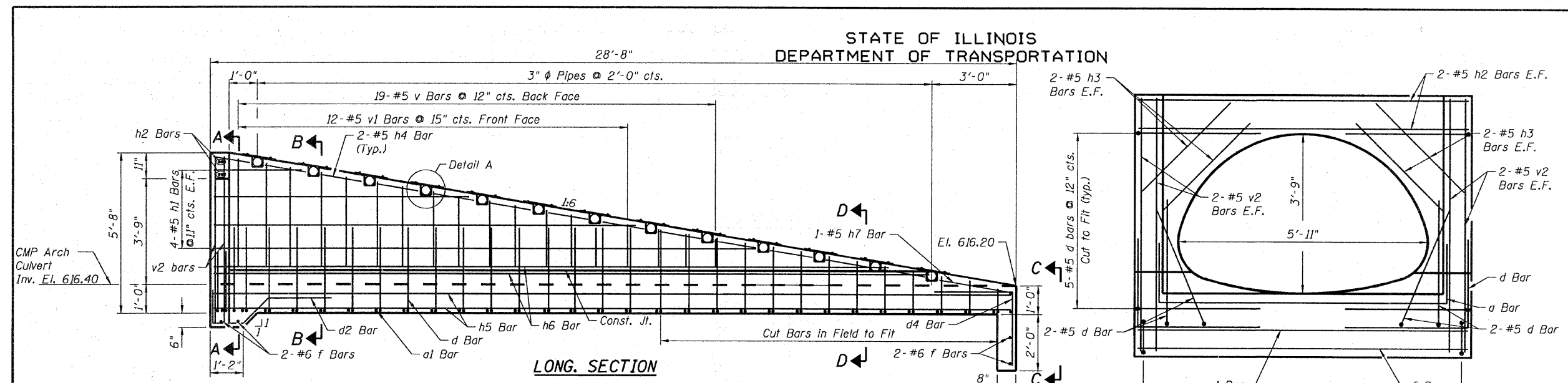


STATE OF ILLINOIS
DEPARTMENT OF TRANSPORTATION

BILL OF MATERIAL

Bar	No.	Size	Length	Shape	
a	16	# 5	11' - 8"	┌	
a1	37	# 5	7' - 8"	—	
d	50	# 5	5' - 10"	L	
d1	22	# 5	4' - 2"	L	
d2	9	# 5	5' - 9"	L	
d4	9	# 5	5' - 4"	L	
f	4	# 6	7' - 8"	—	
h1	8	# 5	22' - 6"	—	
h2	4	# 5	7' - 8"	—	
h3	8	# 5	3' - 0"	—	
h4	52	# 5	1' - 6"	—	
h5	18	# 5	28' - 4"	—	
h6	6	# 5	25' - 2"	—	
h7	2	# 5	2' - 8"	—	
v	19	# 5	4' - 8"	—	
v1	12	# 5	5' - 4"	—	
v2	8	# 5	5' - 8"	—	
Culvert End Section				Each	1
Concrete Structures				Cu. Yd.	12.7
Reinforcement Bars, Epoxy Coated				Pound	2,170
1/2" Galv. Exp. Bolts				Each	52
1/4" Galv. Steel Plate (9" Nominal)				Each	26
1/2"x4"x14" Galvanized Steel Plate				Each	26
3" Galv. Steel Pipe				Each	13
3" Galv. Pipe Caps				Each	26

* For Information Only



DESIGN STRESSES
 $f_y = 60,000 \text{ psi}$
 $f'_c = 3,500 \text{ psi}$

- NOTES:**
1. For General Notes see Sheet S-1.
 2. For Detail A and reinforcement details see Sheet S-1.
 3. For Grating details see Sheet S-1.

END SECTION - SOUTH SIDE
FAP ROUTE 638(IL 82)
STA. 1361+50

DESIGNED -	BWS
CHECKED -	EKM
DRAWN -	RD
CHECKED -	BWS

CG Ciorba Group, Inc.
CONSULTING ENGINEERS
5507 North Cumberland Avenue, Suite 402 Chicago, Illinois 60658
Tel. 773.775.4009 Fax 773.775.4014 Email chicago@ciorba.com

SECTION D-D

NEW
REVISI REVISION SHEET 10/28/09

SHEET NO. S-2 S-2 SHEETS	F.A.P. RTE.	SECTION	COUNTY	TOTAL SHEETS	SHEET NO.
	638 (IL82)	129BR	HENRY COUNTY	42	23B
			CONTRACT NO. 64A04		
FED. ROAD DIST. NO. ILLINOIS FED. AID PROJECT					

18/21/2009
#NAME#
N:\PROJ\3317\11\Design\Structure\CHD\3317_11_01.pland.dgn