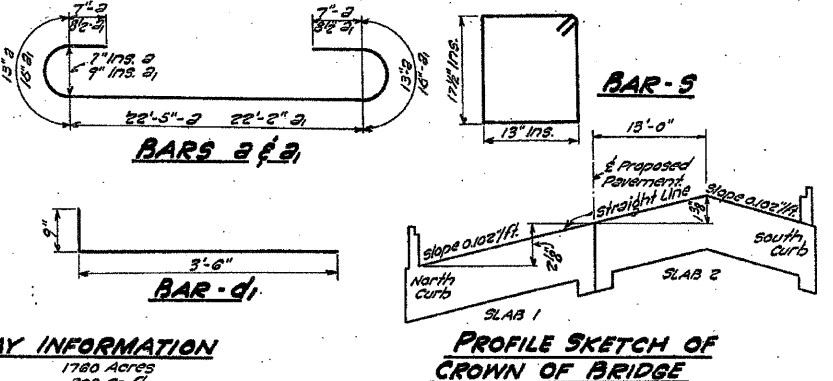
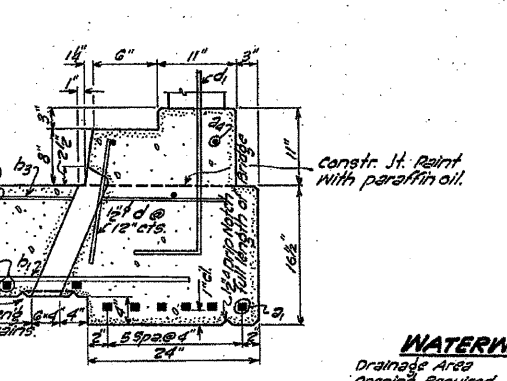
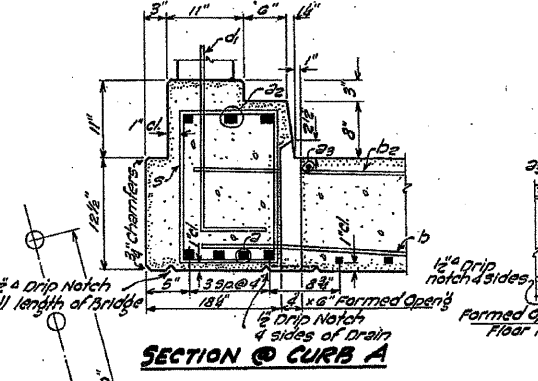
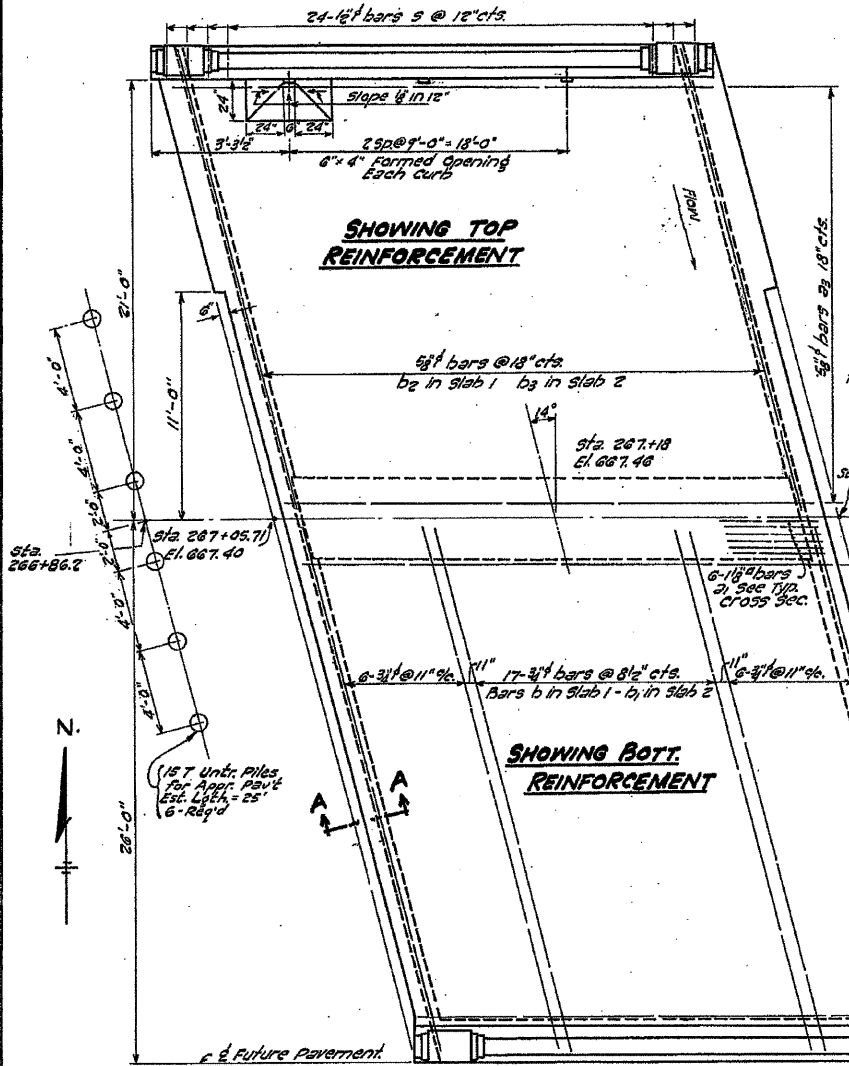
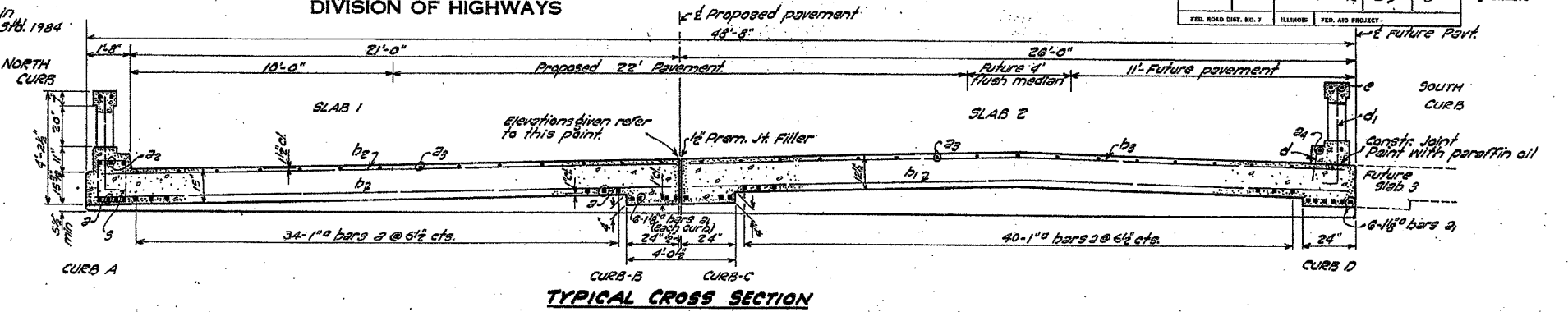
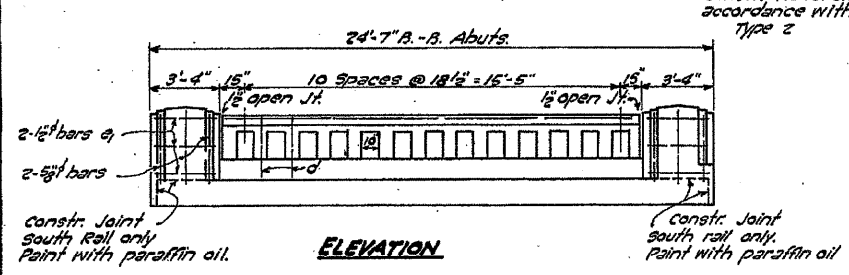


STATE OF ILLINOIS
DEPARTMENT OF PUBLIC WORKS & BUILDINGS
DIVISION OF HIGHWAYS

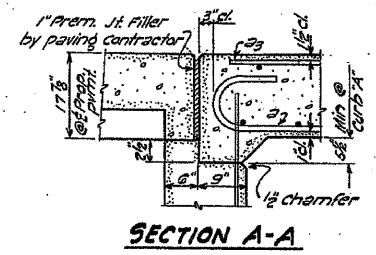
ROAD DIST. NO.	SECTION	COUNTY	TOTAL SHEETS	SHEET NO.	SHEET NO. 1
FA 7	31-18	Lee Whiteside	29	5	3 SHEETS

B.M. Sp. W. in triple locust, 85' Rt. Sta. 266+35 El. 661.50
Existing structure: 1 Beams, Concrete floor & R.C. Abuts. 1 span @ 28' Rdwy. 15'
To be removed by Bridge Contractor, when new bridge is built. Salvage
1 Beams for reuse. Pile along R.O.W. as directed by Engineer.



WATERWAY INFORMATION

Drainage Area	1760 Acres
opening Required	203 sq. ft.
C (Tribut)	.75
opening provided	203 sq. ft.



GENERAL NOTES.

Class X concrete shall be used thru-out except as noted.
Handrail concrete shall be used in Handrail.
Handrail shall not be poured until falsework has been removed.
The concrete slab on either side of center joint shall be poured in one continuous operation.
The falsework on one side of the center joint shall not be removed until after the floor slab and curb are poured on the other side.
The concrete floor shall be finished in accordance with Art. 51.01 of the Standard Specs.
Bridge Contractor to excavate new channel 40' Lt. and 40' Rt. of centerline of proposed improvement as indicated by typical section, estimated 75 cu. yds. channel excavation. Place in roadway fill within 200' of East Abutment as directed by the Engineer.
The contractor shall drive 2 test piles as directed by the Engineer before ordering the remainder of the piles. (Drive in Permanent location) for backfill behind abutments with fixed taps. see Art. 50.0 of Std. Specs.
The backs of the abutments & wing walls above the tops of the footings shall be water proofed in accordance with Article 51.20 of the Standard specification.
A.S.T.M. Designation A305 reinforcement shall be used. The round bar corresponding to the area, called for in the Bill of Material, shall be used.

TOTAL BILL OF MATERIAL

ITEM	Superstr.	Substr.	Total
Handrail Concrete cu.yds.	3.9		3.9
Class X Concrete cu.yds.	50.2	232.4	282.6
Reinforcement Bars Lbs.	13160	20420	33580
Untreated Piles (10R) Lin. Ft.		1270	1270
Untreated Piles (25') Lin. Ft.		300	300
Test Piles Ea.		2	2
Name Plate Ea.	one		one
Channel Excav. cu.yds.			75
Rem. of Exist Str. Ea.			one
Class A Excav. for Str. Cu.Yds.			625
Class B Excav. for Str. Cu.Yds.			510

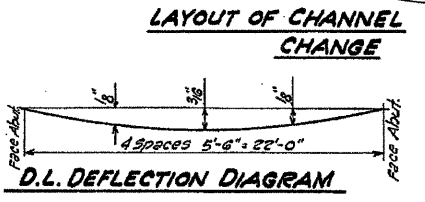
SUPERSTRUCTURE BILL OF MATERIAL

BAR NO	SIZE	LENGTH	SHAPE
a	7/8	26'-9"	U
b	1 1/8	26'-8"	U
c	3	24'-0"	U
d	3 1/2	23'-0"	U
e	2	24'-0"	U
f	2 1/2	22'-0"	U
g	2 1/2	22'-0"	U
h	2 1/2	22'-0"	U
i	2 1/2	22'-0"	U
j	2 1/2	22'-0"	U
k	2 1/2	22'-0"	U
l	2 1/2	22'-0"	U
m	2 1/2	22'-0"	U
n	2 1/2	22'-0"	U
o	2 1/2	22'-0"	U
p	2 1/2	22'-0"	U
q	2 1/2	22'-0"	U
r	2 1/2	22'-0"	U
s	2 1/2	22'-0"	U
t	2 1/2	22'-0"	U
u	2 1/2	22'-0"	U
v	2 1/2	22'-0"	U
w	2 1/2	22'-0"	U
x	2 1/2	22'-0"	U
y	2 1/2	22'-0"	U
z	2 1/2	22'-0"	U

BORING DATA

STATION	DEPTH	SOIL TYPE
267+18	0-2'	Black Loam
267+18	2-4'	Silty Gray Clay
267+18	4-6'	Yellow Sand
267+18	6-8'	Gray Sand
267+18	8-10'	Gray Sand
267+18	10-12'	Gray Sand
267+18	12-14'	Gray Sand
267+18	14-16'	Gray Sand
267+18	16-18'	Gray Sand
267+18	18-20'	Gray Sand
267+18	20-22'	Gray Sand
267+18	22-24'	Gray Sand
267+18	24-26'	Gray Sand
267+18	26-28'	Gray Sand
267+18	28-30'	Gray Sand
267+18	30-32'	Gray Sand
267+18	32-34'	Gray Sand
267+18	34-36'	Gray Sand
267+18	36-38'	Gray Sand
267+18	38-40'	Gray Sand
267+18	40-42'	Gray Sand
267+18	42-44'	Gray Sand
267+18	44-46'	Gray Sand
267+18	46-48'	Gray Sand
267+18	48-50'	Gray Sand
267+18	50-52'	Gray Sand
267+18	52-54'	Gray Sand
267+18	54-56'	Gray Sand
267+18	56-58'	Gray Sand
267+18	58-60'	Gray Sand
267+18	60-62'	Gray Sand
267+18	62-64'	Gray Sand
267+18	64-66'	Gray Sand
267+18	66-68'	Gray Sand
267+18	68-70'	Gray Sand
267+18	70-72'	Gray Sand
267+18	72-74'	Gray Sand
267+18	74-76'	Gray Sand
267+18	76-78'	Gray Sand
267+18	78-80'	Gray Sand
267+18	80-82'	Gray Sand
267+18	82-84'	Gray Sand
267+18	84-86'	Gray Sand
267+18	86-88'	Gray Sand
267+18	88-90'	Gray Sand
267+18	90-92'	Gray Sand
267+18	92-94'	Gray Sand
267+18	94-96'	Gray Sand
267+18	96-98'	Gray Sand
267+18	98-100'	Gray Sand

STATION 267+18
BUILT 195 BY
STATE OF ILLINOIS
F.A. RT. 7 SEC. 31-18
LOADING H-20-516
Lettering for Name Plate
See Std. 2115



COMPUTED	H. B. Berman
CHECKED	Y. C. Chang
DRAWN	H. B. Berman
CHECKED	Y. C. Chang
SPECIAL	ASSEMBLED
	CHECKED

EXAMINED	June 24 1954
	W. E. Hanson
PASSED	E. Hanson
APPROVED	R. B. Bartelme

Revised: 9-15-49 100.0
Revised: 9-21-50 Appx P&E Piles added - J.S.M.
Revised: Slab Thickness & General Notes - 6-21-54 H.P.G.

△ SHEET ADDED 10/23/09 H-20-5-16-44 Loading

FOR INFORMATIONAL PURPOSES ONLY

F.A.P. RTE.	SECTION	COUNTY	TOTAL SHEETS	SHEET NO.
561	31-1BR-1 & 31-1BR-2	LEE	92	92D
CONTRACT NO. 64B05				
FED. ROAD DIST. NO. ILLINOIS FED. AID PROJECT				