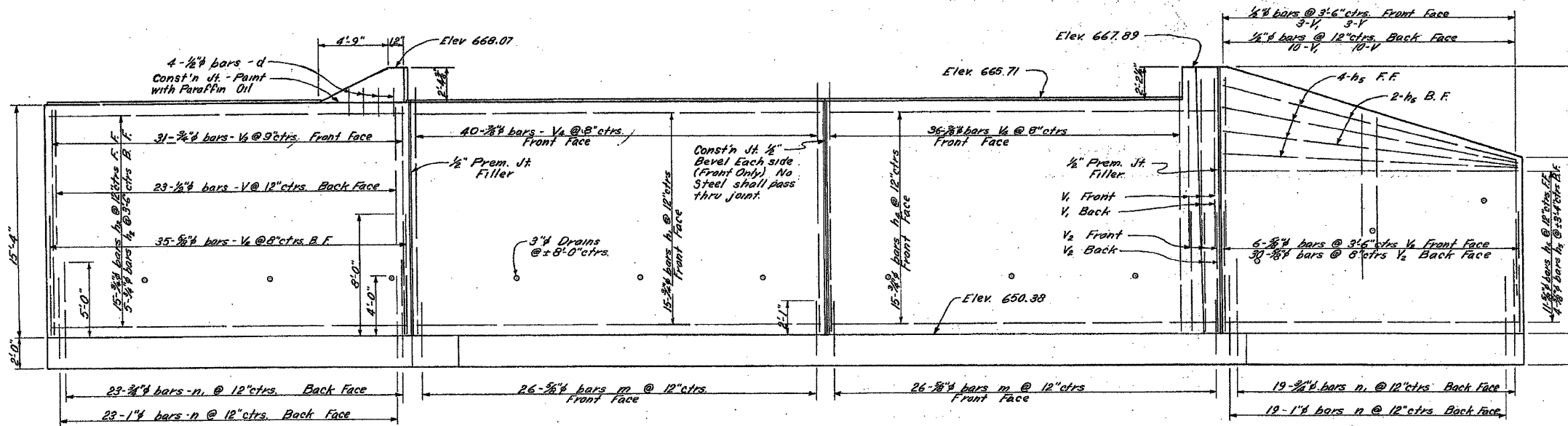
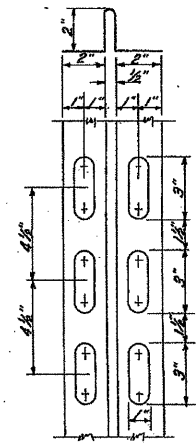


STATE OF ILLINOIS  
DEPARTMENT OF PUBLIC WORKS & BUILDINGS  
DIVISION OF HIGHWAYS

BOND ISSUE ROUTE NO.	SECTION	COUNTY	TOTAL SHEETS	SHEET NO.	SHEET NO. 3
FA-7	31-18	Lee Whitebridge	29	7	3 SHEETS
FED. ROAD DIST. NO. 7	ILLINOIS	FED. AID PROJECT			



ELEVATION WEST ABUTMENT

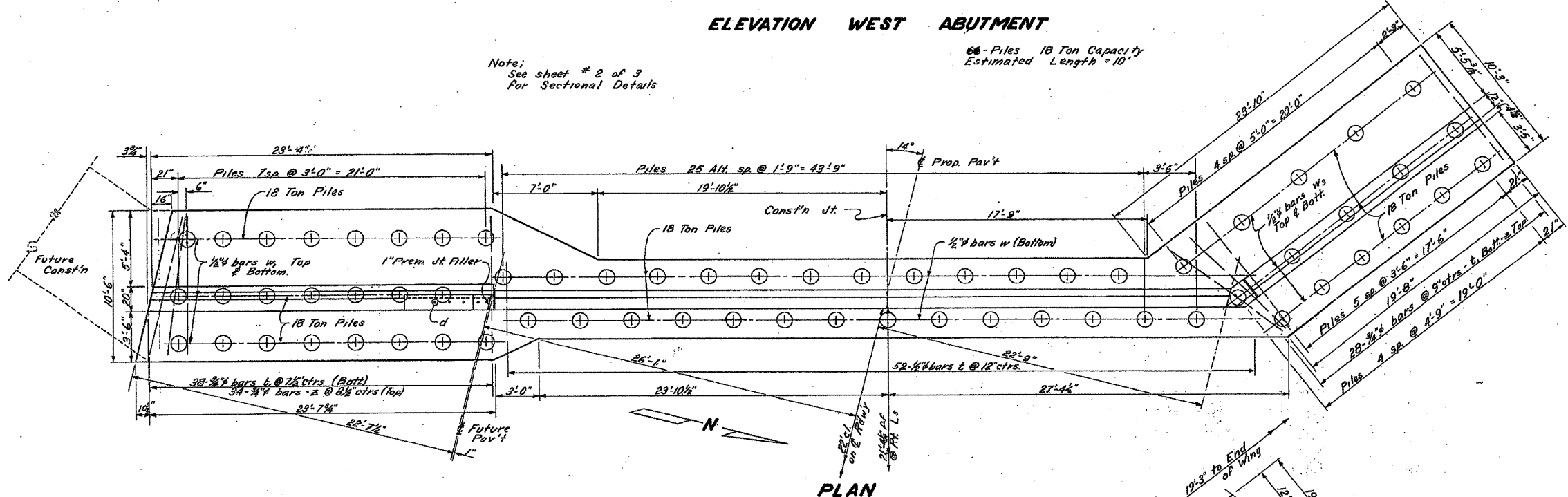


Copper Seal shall be 16oz. Cold Rolled Annealed Copper with perforated Flanges. Splices if necessary shall be soldered or brazed. Cost shall be included in contract unit price for Class X Concrete.

DETAIL OF COPPER SEAL

Note:  
See sheet # 2 of 3  
For Sectional Details

66 Piles 18 Ton Capacity  
Estimated Length = 10'



PLAN

BILL OF MATERIAL WEST ABUTMENT

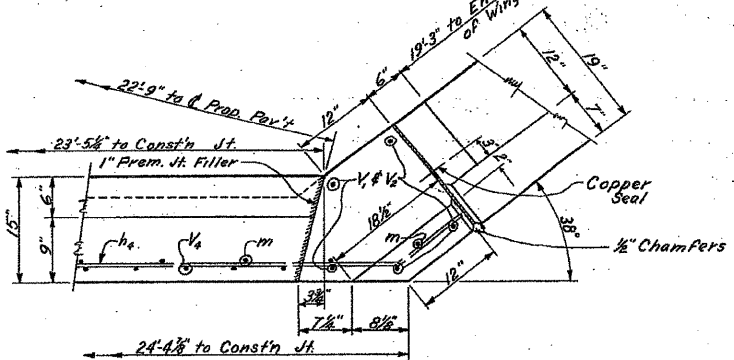
BAR NO.	SIZE	LENGTH	SHAPE
h <sub>1</sub>	15 3/4"	26'-0"	—
h <sub>2</sub>	20 3/4"	23'-0"	—
h <sub>3</sub>	15 3/4"	24'-9"	—
h <sub>4</sub>	21 7/8"	19'-3"	—
V	36 1/2"	9'-0"	—
V <sub>1</sub>	18 1/2"	11'-0"	—
V <sub>2</sub>	76 1/8"	8'-0"	—
V <sub>3</sub>	31 3/4"	15'-0"	—
V <sub>4</sub>	76 1/8"	16'-6"	—
n	42 1"	6'-9"	C
n <sub>1</sub>	42 3/8"	7'-6"	C
m	52 3/8"	4'-6"	C
b	52 1/2"	6'-6"	C
t	68 3/4"	11'-3"	C
z	62 3/4"	10'-0"	—
w	6 1/2"	19'-0"	—
w <sub>1</sub>	6 1/2"	24'-0"	—
w <sub>2</sub>	6 1/2"	20'-6"	—
d	4 1/2"	1'-6"	—

Class X Concrete	Cu Yds.	119.1
Reinforcement Bars	Lbs.	10475
Untreated Piles (10 ft.)	Ln Ft.	650
Test Piles	Ea.	One
Class A Excav for Str.	Cu Yds.	306
Class B Excav for Str.	Cu Yds.	260

STANDARD	COMPUTED	W. E. Hanson
	CHECKED	Y. C. Chang
	DRAWN	W. E. Hanson, G. S. Cole
	CHECKED	Y. C. Chang
SPECIAL	ASSEMBLED	
	CHECKED	

EXAMINED June 24 1954  
W. E. Hanson  
PASSED  
APPROVED R. H. Bateman

BAR - h<sub>4</sub>



WING CORNER DETAIL

FOR INFORMATIONAL PURPOSES ONLY

F.A.P. RTE.	SECTION	COUNTY	TOTAL SHEETS	SHEET NO.
561	31-1BR-1 & 31-1BR-2	LEE	92	92F
CONTRACT NO. 64B05				

FED. ROAD DIST. NO. ILLINOIS FED. AID PROJECT

△ SHEET ADDED 10/23/54