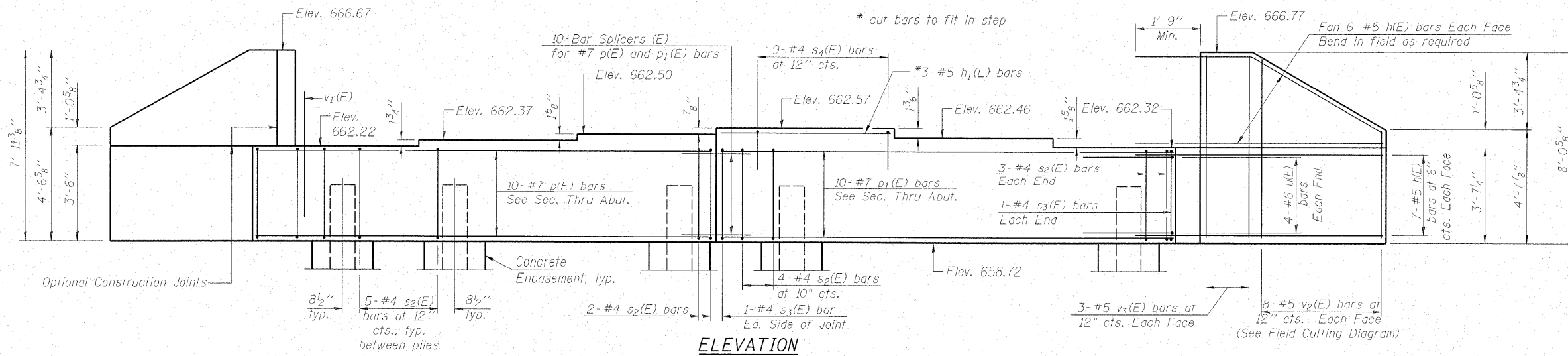
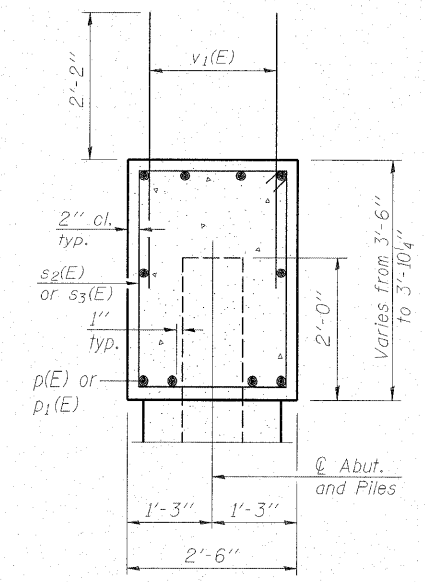


STATE OF ILLINOIS  
DEPARTMENT OF TRANSPORTATION

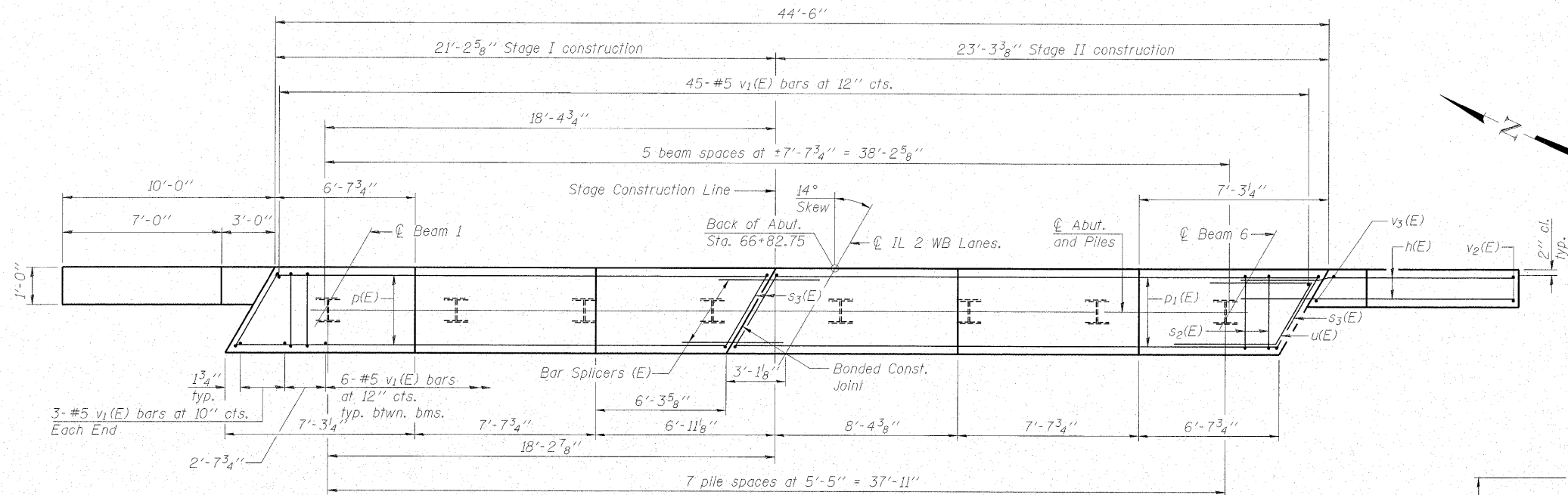
Notes: Four steps monolithically with cap.



ELEVATION

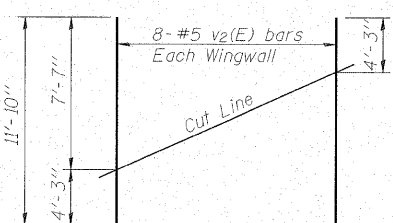


SEC. THRU ABUT.



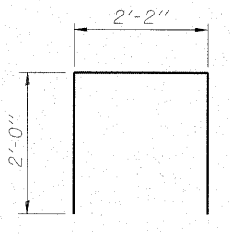
PLAN

**PILE DATA**  
Type: Steel HP12x53 w/ pile shoes  
Nominal Required Bearing: 330 kips  
Factored Resistance Available: 165 kips  
Est. Length: 63 feet  
No. Production Piles: 7  
No. Test Piles: 1

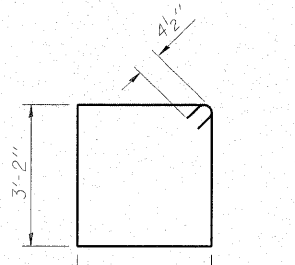


FIELD CUTTING DIAGRAM

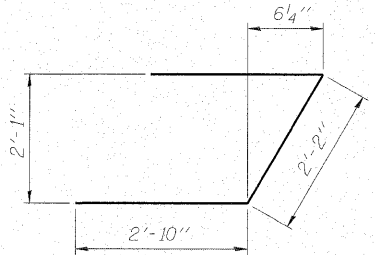
Order v2(E) full length. Cut as shown and use remainder of bars in opposite face.



BAR s4(E)



BARS s2(E) & s3(E)



BAR u(E)

**BILL OF MATERIAL**

Bar	No.	Size	Length	Shape
h(E)	52	#5	12'-5"	—
h1(E)	3	#5	8'-8"	—
p(E)	10	#7	20'-11"	—
p1(E)	10	#7	22'-11"	—
s2(E)	42	#4	11'-5"	□
s3(E)	4	#4	11'-7"	□
s4(E)	9	#4	6'-2"	□
u(E)	8	#6	7'-10"	┘
v1(E)	81	#5	4'-4"	—
v2(E)	16	#5	11'-10"	—
v3(E)	12	#5	7'-8"	—
Structure Excavation			Cu. Yd.	155
Concrete Structures			Cu. Yd.	20.2
Concrete Encasement			Cu. Yd.	2.8
Reinforcement Bars, Epoxy Coated			Pound	2740
Furnishing Steel Piles, HP12x53			Foot	441
Driving Piles			Foot	441
Test Pile, Steel HP12x53			Each	1
Pile Shoes			Each	8

For details of Bar Splicers, see sheet 18 of 20.  
For details of piles and Concrete Encasement, see sheet 17 of 20.

**EAST ABUTMENT**  
IL RTE. 2 WB OVER LITTLE CREEK  
STATION 66+52.00

**MAURER & STUTZ, INC.**  
ENGINEERS SURVEYORS

DESIGNED - BAS
CHECKED - KEF
DRAWN - SGM
CHECKED - RJA/KEF

SHEET NO. 16 20 SHEETS	F.A.P. RTE.	SECTION	COUNTY	TOTAL SHEETS	SHEET NO.
	561	31-1BR-1	LEE	92	49
STRUCTURE NO. 052-0078		CONTRACT NO. 64B05			
FED. ROAD DIST. NO.		ILLINOIS FED. AID PROJECT			