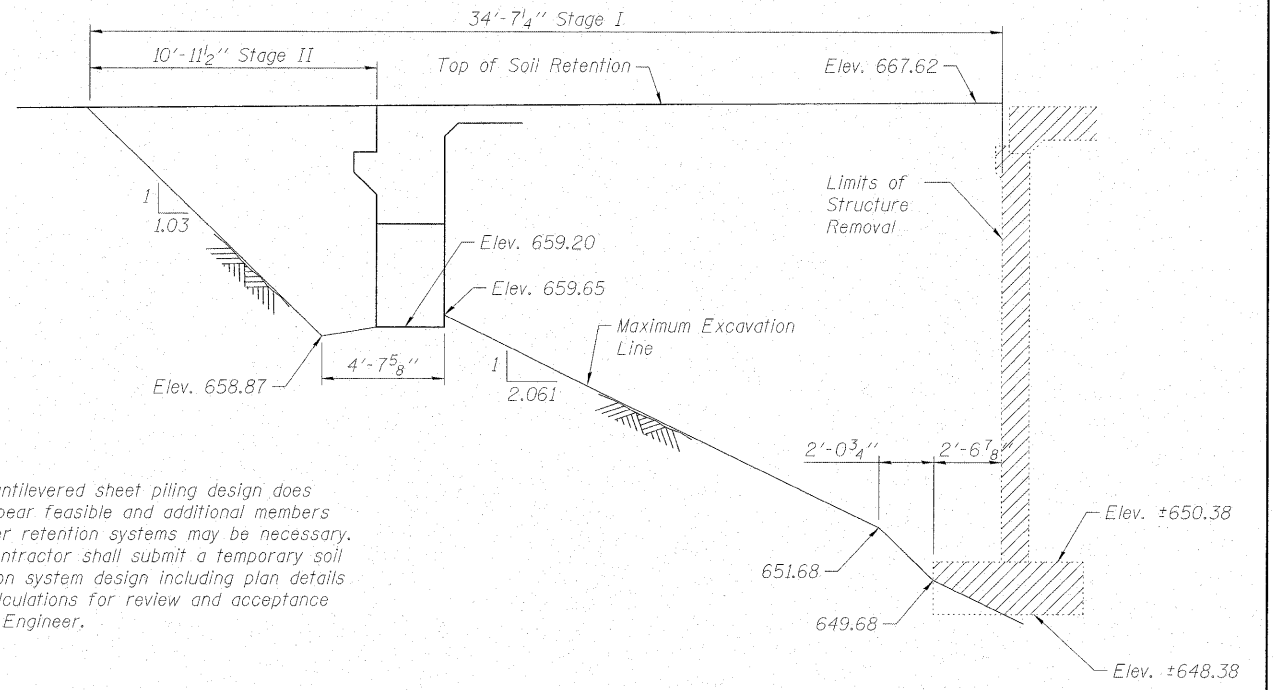
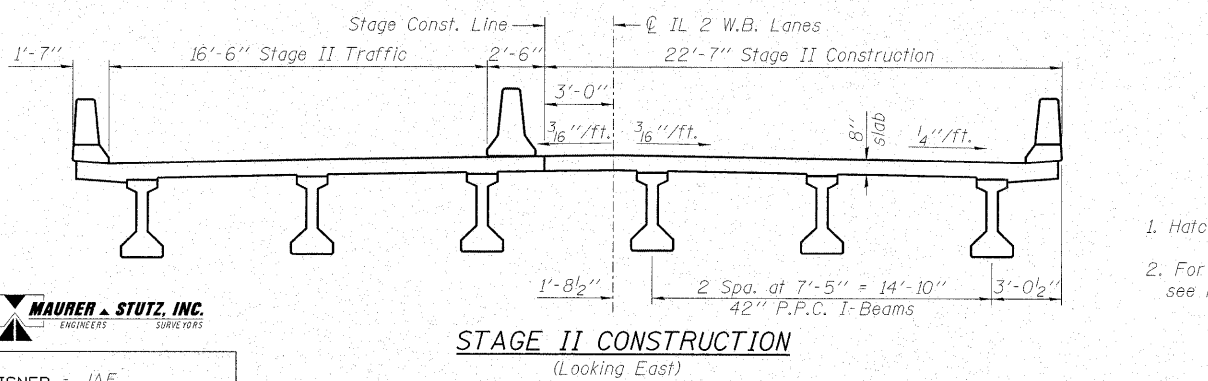
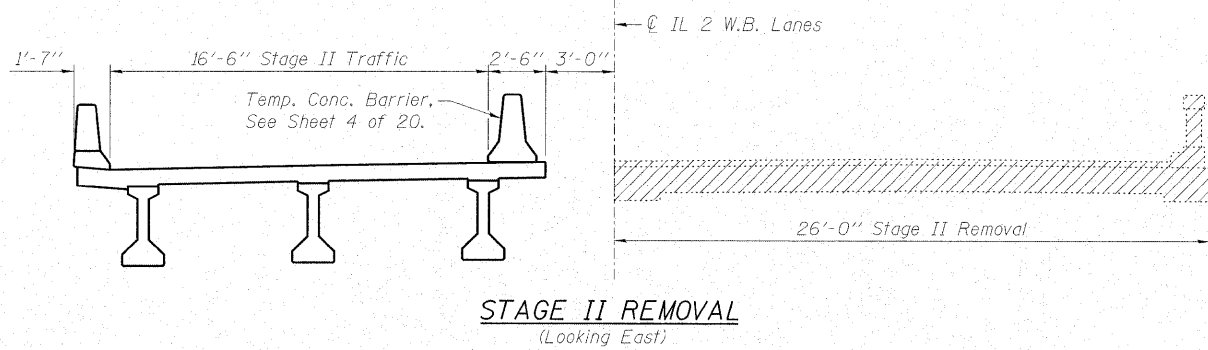
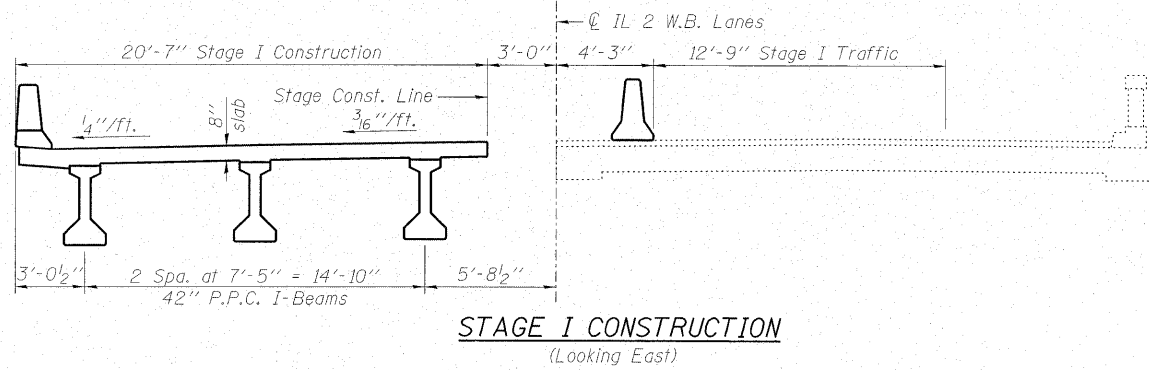
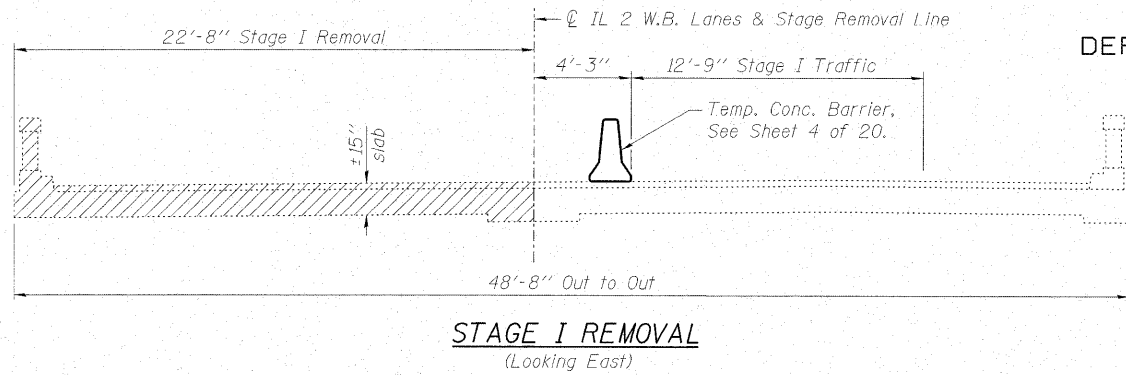


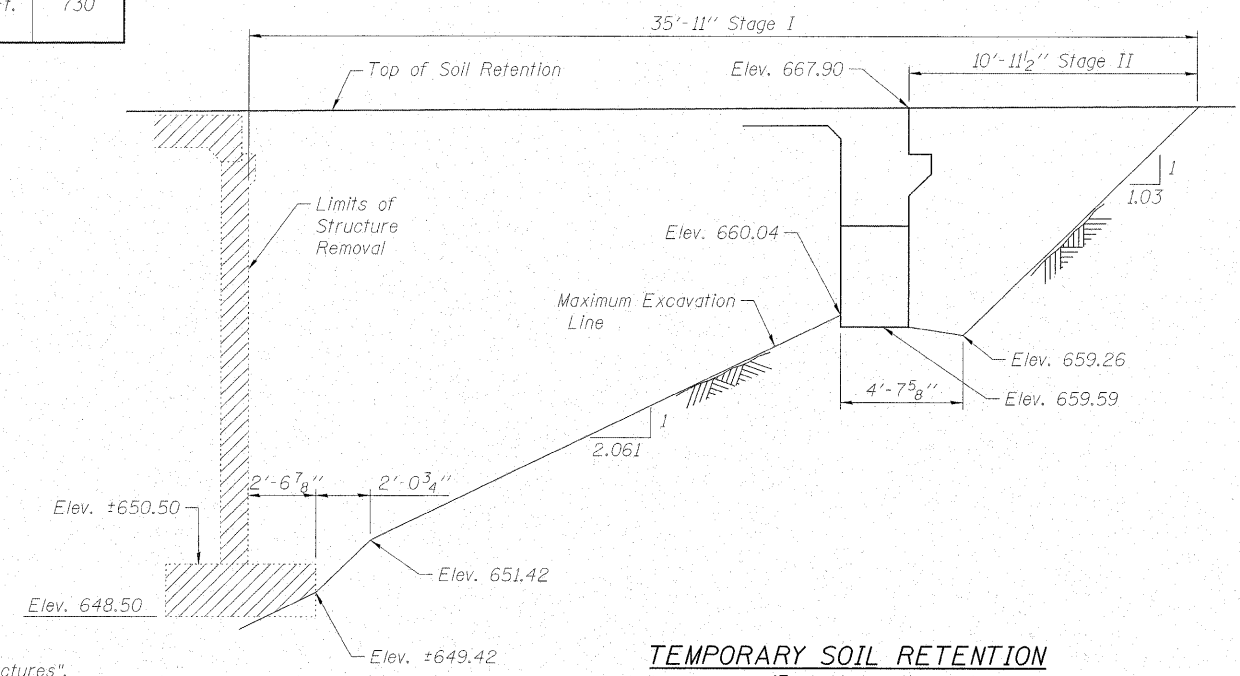
STATE OF ILLINOIS  
DEPARTMENT OF TRANSPORTATION



A cantilevered sheet piling design does not appear feasible and additional members or other retention systems may be necessary. The Contractor shall submit a temporary soil retention system design including plan details and calculations for review and acceptance by the Engineer.

**BILL OF MATERIAL**

Item	Unit	Quantity
Temporary Soil Retention System	Sq. Ft.	730



**STAGING NOTES:**

- Hatched areas indicate "Removal of Existing Structures".
- For quantities of "Temporary Concrete Barrier", see Roadway Plans.

**STAGING DETAILS**  
IL RTE. 2 WB OVER UNNAMED TRIBUTARY TO THE ROCK RIVER  
STATION 115+16.00

SHEET NO.	F.A.P. RTE.	SECTION	COUNTY	TOTAL SHEETS	SHEET NO.
3	561	31-1BR-2	LEE	92	56
20 SHEETS			STRUCTURE NO. 052-0079 CONTRACT NO. 64B05		
FED. ROAD DIST. NO. ILLINOIS FED. AID PROJECT					

**MAURER & STUTZ, INC.**  
ENGINEERS SURVEYORS

DESIGNED - JAE  
CHECKED - KEF  
DRAWN - SGM  
CHECKED - RJA/KEF