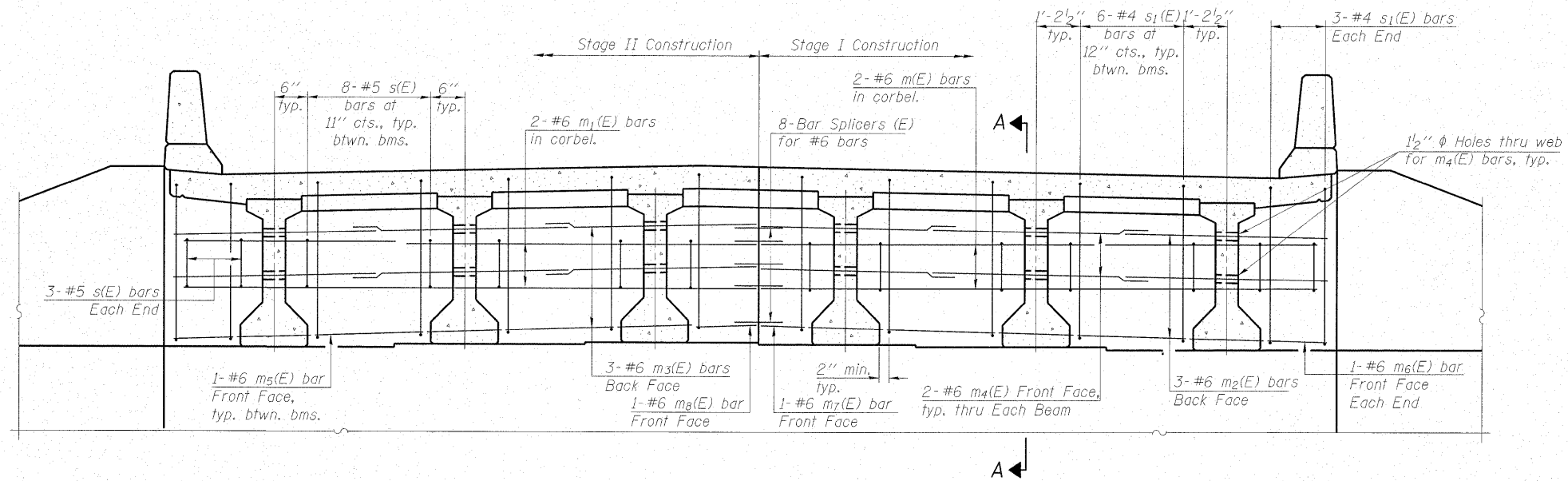


STATE OF ILLINOIS
DEPARTMENT OF TRANSPORTATION



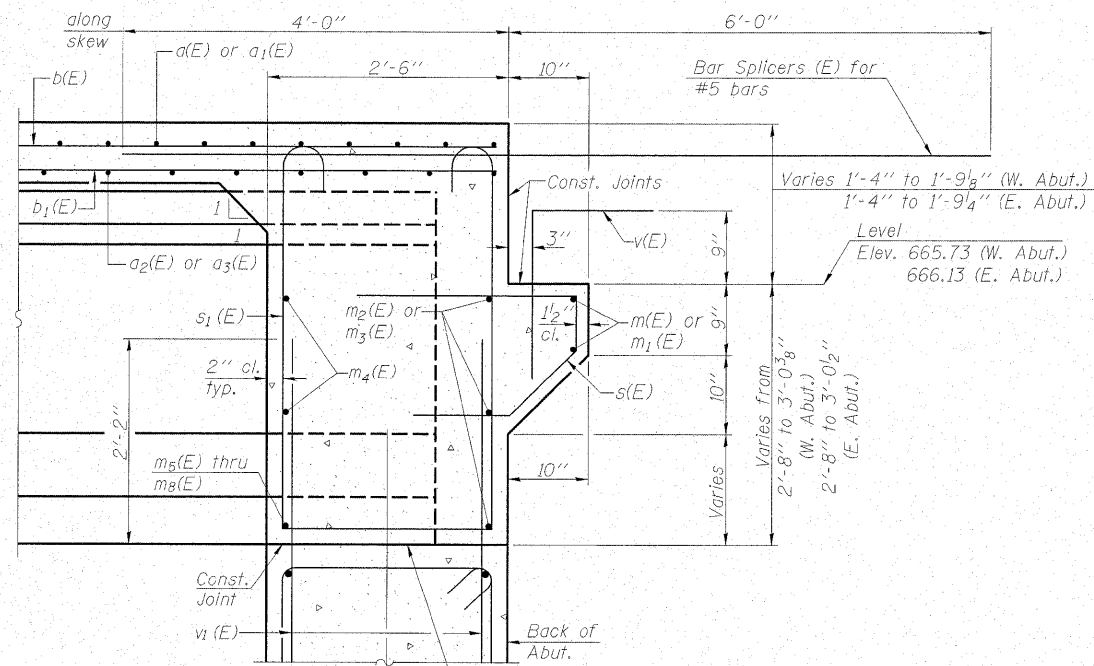
DIAPHRAGM ELEVATION AT ABUTMENT

West Abut. shown, East Abut. opposite

MIN. BAR LAP

#6 bar = 2'-9"

Notes:
Reinforcement bars in diaphragm are billed with superstructure on sheet 10 of 20.
Concrete in diaphragm is included with Concrete Superstructure on sheet 10 of 20.
For details of bars s(E) and s₁(E) see sheet 10 of 20.
The s(E) and s₁(E) bars shall be placed parallel to the beams.
Spacing for these bars shall be at right angles to the beams.



SECTION A-A

Beam ends shall be set on an initial 1/2" min. grout (2:1 sand and portland cement, very dry mix) to provide full bearing. Any excess grout squeezed out from under the beam shall be removed. Cost included with Concrete Structures.



DESIGNED - JAE
CHECKED - KEF
DRAWN - SGM
CHECKED - RJA/KEF

DIAPHRAGM DETAILS
IL RTE. 2 WB OVER UNNAMED TRIBUTARY TO THE ROCK RIVER
STATION 115+16.00

SHEET NO. 11 20 SHEETS	F.A.P. RTE.	SECTION	COUNTY	TOTAL SHEETS	SHEET NO.
	561	31-1BR-2	LEE	92	64
STRUCTURE NO. 052-0079		CONTRACT NO. 64B05			
FED. ROAD DIST. NO. _		ILLINOIS FED. AID PROJECT			