

F.A.P. RTE.	SECTION	COUNTY	TOTAL SHEETS	SHEET NO.
638	129 BR-3	HENRY	73	1
FED. ROAD DIST. NO.	ILLINOIS	CONTRACT NO. 64B08		

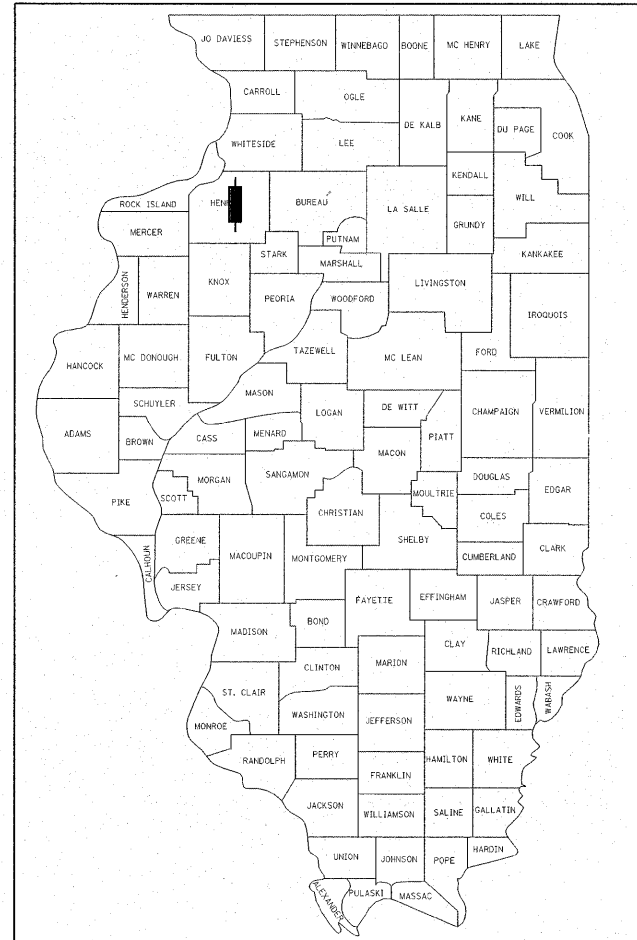
FOR INDEX OF SHEETS, SEE SHEET NO. 2  
 FOR STATE STANDARDS AND DISTRICT STANDARDS, SEE SHEET NO. 2

STATE OF ILLINOIS  
 DEPARTMENT OF TRANSPORTATION  
 DIVISION OF HIGHWAYS

**PROPOSED  
 HIGHWAY PLANS**

FAP ROUTE 638 (IL 82)  
 SECTION 129 BR-3  
 PROJECT ESP-0638(013)  
 HENRY COUNTY  
 C-92-022-09

D-92-070-05

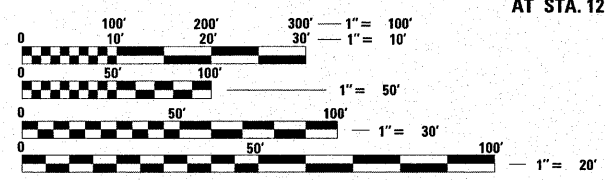


LOCATION OF SECTION INDICATED THUS: - [Symbol] -

PREPARED BY:  
**MAURER & STUTZ, INC.**  
 ENGINEERS SURVEYORS

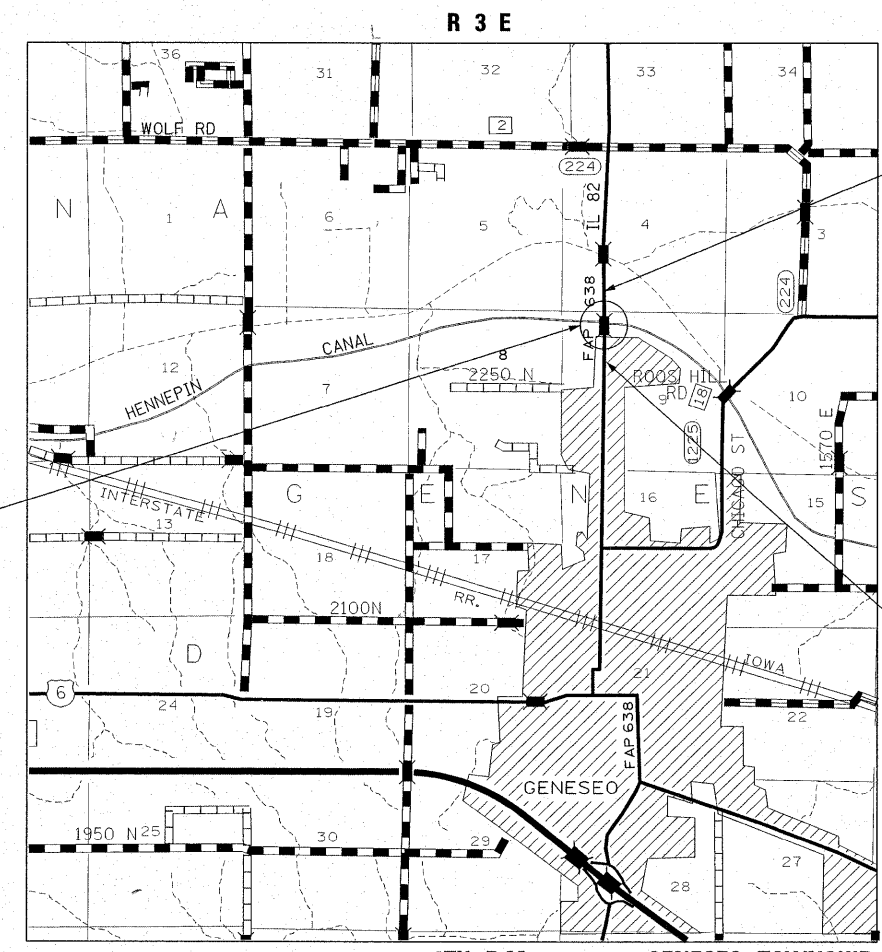
7615 NORTH HARKER DRIV.  
 PEORIA, ILLINOIS 61615  
 TEL 309-693-7615  
 FAX 309-693-7616  
 CONTACT: RICK ANDERSON

SECTION 129 BR-3  
 INCLUDES THE REMOVAL OF THE EXISTING  
 STRUCTURE NO. 037-0124 AND CONSTRUCTION  
 OF THE NEW STRUCTURE NO. 037-0175, A THREE  
 SPAN 27" I-BEAM ON INTEGRAL ABUTMENTS,  
 AT STA. 1241+97.00



FULL SIZE PLANS HAVE BEEN PREPARED USING STANDARD  
 ENGINEERING SCALES. REDUCED SIZED PLANS WILL NOT  
 CONFORM TO STANDARD SCALES. IN MAKING MEASUREMENTS  
 ON REDUCED PLANS, THE ABOVE SCALES MAY BE USED.

J.U.L.I.E.  
 JOINT UTILITY LOCATION INFORMATION FOR EXCAVATION  
 1-800-892-0123  
 OR 811



SECTION ENDS  
 STATION 1245 + 76.00

SECTION BEGINS  
 STATION 1238 + 93.00

LOCATION MAP

GROSS LENGTH = 683 FT. = 0.13 MILES  
 NET LENGTH = 683 FT. = 0.13 MILES

STATE OF ILLINOIS  
 DEPARTMENT OF TRANSPORTATION  
 DIVISION OF HIGHWAYS

SUBMITTED Aug 19 2009

George F. Ryan  
 DEPUTY DIRECTOR OF HIGHWAYS, REGION ENGINEER

October 2, 2009  
Charles J. Ingersoll, P.E.  
 ENGINEER OF DESIGN AND ENVIRONMENT

October 2, 2009  
Christine M. Reed, P.E.  
 DIRECTOR OF HIGHWAYS, CHIEF ENGINEER

ENGINEERS SIGNATURE BOX

Jeffrey D. Spiller

8/10/09 SIGNED 11/30/2009 LISC. EXP. DATE

PRINTED BY THE AUTHORITY  
 OF THE STATE OF ILLINOIS

PROJECT ENGINEER: REBECCA MARRUFFO  
 PROJECT LEADER: DAWN PERKINS (815) 284-5948

CONTRACT NO. 64B08