

FOR INDEX OF SHEETS, SEE SHEET NO. 2

DESIGN DESIGNATION
PRINCIPAL ARTERIAL (RURAL)
CLASS II TRUCK ROUTE

TRAFFIC DATA:

US 20
 2011 ADT = 10,475 (BUILD YEAR)
 2021 ADT = 12775 (10 YR. STRUCTURAL DESIGN)
 2031 ADT = 15,575 (20 YR. DESIGN)
 11.8% TRUCKS; 2031 DHV:1,560
 POSTED SPEED LIMIT (55MPH)
 DESIGN SPEED LIMIT (60MPH)

RAILROAD DATA:

TRAINS/DAY: 6 TO 8
 # OF TRACKS: 1
 SPEEDS: 40 MPH

PROJECT LOCATED IN:

CITY OF FREEPORT
 FREEPORT TOWNSHIP
 SECTIONS 17, 19, & 20
 STEPHENSON COUNTY

STATE OF ILLINOIS
 DEPARTMENT OF TRANSPORTATION
 DIVISION OF HIGHWAYS

**PROPOSED
 HIGHWAY PLANS**

FAP ROUTE 301 (US 20)
 SECTION 21 VBR
**U.S. RTE. 20 ROADWAY RECONSTRUCTION AND WIDENING
 & BRIDGE REPLACEMENT OVER CHICAGO CENTRAL & PACIFIC RR**
 PROJECT ACBRF-0301(061)
 STEPHENSON COUNTY
 C 92-077-07

F.A.P. RTE.	SECTION	COUNTY	TOTAL SHEETS	SHEET NO.
301	21-VBR	STEPHENSON	112	1
FED. ROAD DIST. NO.	ILLINOIS	CONTRACT NO. 64D15		

D92-055-07



HOH HARRY O. HEFTER-ASSOCIATES, INC.
 DESIGN AND CONSULTING ENGINEERS
 55 East Jackson Blvd. Suite 600
 Chicago, IL 60604 312-346-8131
 PROJECT NUMBER 2945

STATE OF ILLINOIS
 DEPARTMENT OF TRANSPORTATION
 DIVISION OF HIGHWAYS

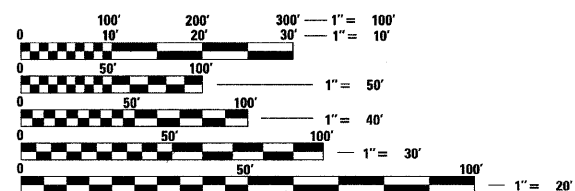
SUBMITTED 8/10 20 09

[Signature]
 DEPUTY DIRECTOR OF HIGHWAYS, REGION ENGINEER

October 2, 20 09
[Signature]
 ENGINEER OF DESIGN AND ENVIRONMENT

October 2, 20 09
[Signature]
 DIRECTOR OF HIGHWAYS, CHIEF ENGINEER

**PRINTED BY THE AUTHORITY
 OF THE STATE OF ILLINOIS
 DISTRICT 2**



FULL SIZE PLANS HAVE BEEN PREPARED USING STANDARD ENGINEERING SCALES. REDUCED SIZED PLANS WILL NOT CONFORM TO STANDARD SCALES. IN MAKING MEASUREMENTS ON REDUCED PLANS, THE ABOVE SCALES MAY BE USED.

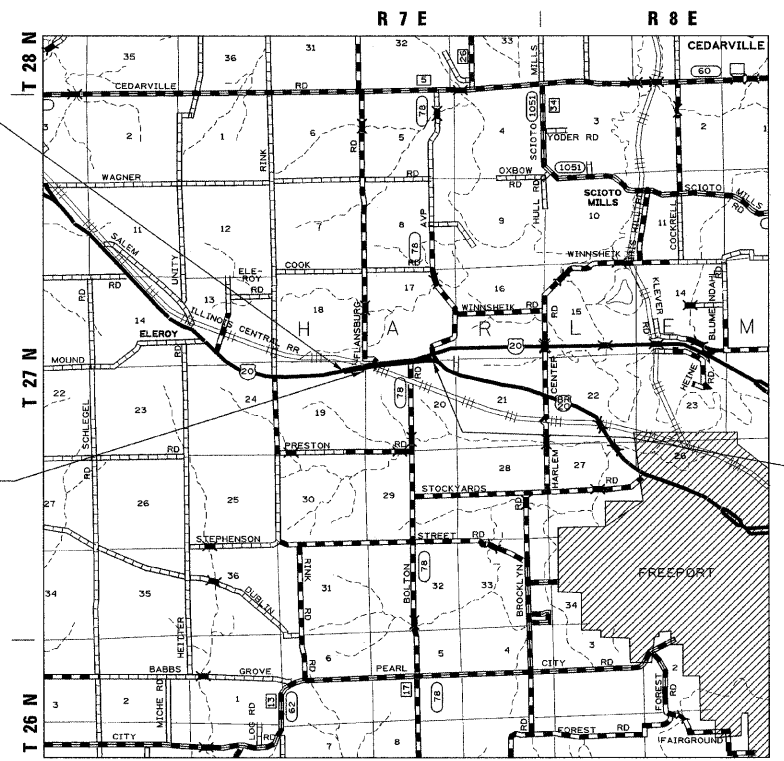
J.U.L.I.E.
 JOINT UTILITY LOCATION INFORMATION FOR EXCAVATION
 1-800-892-0123
 OR 811

IDOT PROJECT MANAGER- MR. SAMEER ABDULLAH (815) 284-5935
 HOH PROJECT MANAGER- MR. GERALD BERNER, PE (312) 424-3650

CONTRACT NO. 64D15

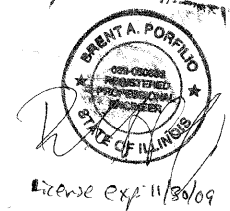
PROJECT BEGIN
 U.S. RTE. 20
 STA. 554+00
 ROADWAY RECONSTRUCTION
 & WIDENING

IL. RTE. 20 BRIDGE OVER
 CHICAGO CENTRAL & PACIFIC RR
 STR. NO. 089-0077
 BRIDGE SUPERSTRUCTURE
 AND SUBSTRUCTURE REMOVAL
 AND REPLACEMENT
 STA. 567+83 TO STA. 570+45

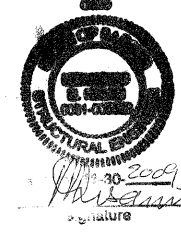


SCALE: 1" = 1 MILE
 LOCATION MAP

U.S. RTE. 20 - GROSS (NET) LENGTH = 0.73 MILES (0.73 MILES)



8/7/09



PROJECT END
 U.S. RTE. 20
 STA. 592+75
 ROADWAY RECONSTRUCTION
 & WIDENING

**FINAL
 08-07-09**