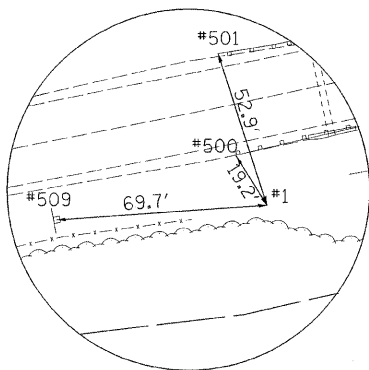


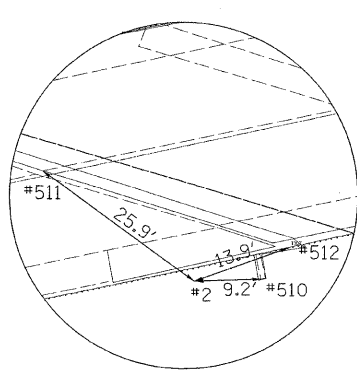
HORIZONTAL CONTROL POINTS							
POINT	NORTH	EAST	ELEVATION	CHAIN	STATION	OFFSET	DESCRIPTION
1	2062201.7360	2413872.9580	880.8540	US20	556+92.9140	34.6877' RT	PIN
2	2062458.9770	2414979.1670	903.2450	US20	568+28.2798	18.503' RT	GPS CONTROL POINT, PIN
3	2062749.9160	2416076.9470	898.0000	US20	579+60.4555	43.7141' LT	GPS CONTROL POINT, PIN
4	2062660.9690	2414781.2340	873.4650	US20	566+77.9257	221.0213' LT	GPS CONTROL POINT, GPS CONTROL POINT

REFERENCE TIES				
POINT	CHAIN	STATION	OFFSET	DESCRIPTION
500	US20	556+86.3619	16.6395' RT	GUARDRAIL STEEL PLATE BEAM, END
501	US20	556+87.4111	17.9551' LT	GUARDRAIL STEEL PLATE BEAM, END
502	US20	566+70.8815	236.6724' LT	SIGN, PAINTED
503	US20	566+74.9178	236.9713' LT	SIGN, PAINTED
504	US20	567+42.2895	151.0572' LT	POWER POLE, SHINER
505	US20	579+81.4179	51.5899' LT	TREE EVERGREEN
506	US20	579+43.9472	82.8617' LT	TREE DECIDUOUS
507	US20	578+98.7424	56.2869' LT	TREE DECIDUOUS
508	US20	579+31.8946	57.5205' RT	POWER POLE, SHINER
509	US20	556+23.9510	25.347' RT	SIGN, PAINTED
510	US20	568+37.3236	20.1732' RT	TOP OF WINGWALL, SW COR
511	US20	568+11.0446	0.7766' LT.	BRIDGE DECK @ CL W END
512	US20	568+42.0289	16.6753' RT.	IDOT DISK @ THE SW C OF BRDG

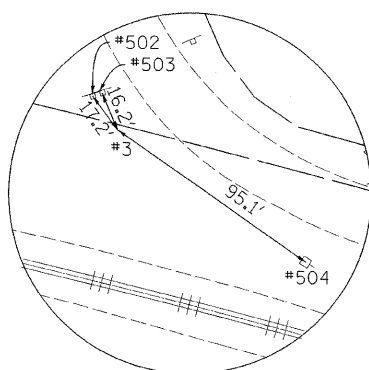
BENCH MARKS							
POINT	NORTH	EAST	ELEVATION	CHAIN	STATION	OFFSET	DESCRIPTION
401	2062199.8680	2413533.3390	883.2290	US20	553+59.6608	30.6353' LT	POWER POLE WITH TRANSFORMER, POWER POLE WITH TRANSFORMER
402	2062463.6920	2414992.2110	902.1630	US20	568+42.0289	16.6753' RT	POWER POLE WITH TRANSFORMER
403	2062607.0520	2415946.2510	897.3530	US20	578+07.5256	75.5364' RT	POWER POLE WITH TRANSFORMER, POWER POLE WITH TRANSFORMER
404	2062569.7230	2414946.6570	878.1670	US20	568+20.1107	96.6267' LT	BOLT
411	2063536.8350	2414755.9030	839.6140	US20	568+39.7803	1082.1751' LT	HEADWALL, HEADWALL



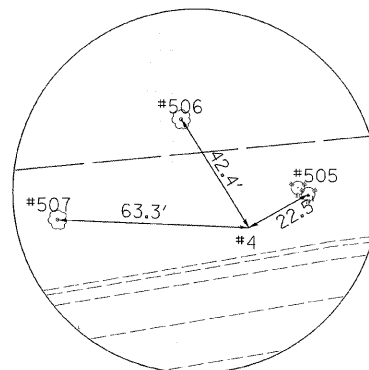
HORIZONTAL CONTROL POINT NO. 1



HORIZONTAL CONTROL POINT NO. 2



HORIZONTAL CONTROL POINT NO. 3



HORIZONTAL CONTROL POINT NO. 4

Chain US20 contains:
CUR 250 CUR A05700200 CUR A05700210 A057150

Beginning chain US20 description

Point PT 240 N 2,061,993.1408 E 2,412,480.9809 Sta 542+86.7582 N

Course from PT 240 to PC 250 81° 23' 12.1128" Dist 270.5097

Curve Data

Curve 250
P.I. Station = 551+97.7537 N 2,062,129.5759 E 2,413,381.7018
Delta = 3° 41' 16.4494" (LT)
Degree = 0° 17' 16.7939"
Tangent = 640.4858
Length = 1,280.5292
Radius = 19,894.4845
External = 10.3073
Long Chord = 1,280.3082
Mid. Ord. = 10.3019
P.C. Station = 545+57.2680 N 2,062,033.6536 E 2,412,748.4397
P.T. Station = 558+37.7972 N 2,062,266.0320 E 2,414,007.4827
C.C. = N 2,081,703.7609 E 2,409,768.9443
Back = 81° 23' 12.1128"
Ahead = 77° 41' 55.6634"
Chord Bear = 79° 32' 33.8881"

Course from PT 250 to PC A05700200 77° 41' 55.6653" Dist 1,730.3590

Curve Data

Curve A05700200
P.I. Station = 581+68.1576 N 2,062,762.5174 E 2,416,284.3406
Delta = 10° 29' 00.5463" (RT)
Degree = 0° 52' 33.8423"
Tangent = 600.0013
Length = 1,196.6529
Radius = 6,540.1116
External = 27.4649
Long Chord = 1,194.9844
Mid. Ord. = 27.3501
P.C. Station = 575+68.1562 N 2,062,634.6866 E 2,415,698.1146
P.T. Station = 587+64.8092 N 2,062,781.5494 E 2,416,884.0400
C.C. = N 2,056,244.7288 E 2,417,091.4916
Back = 77° 41' 55.6578"
Ahead = 88° 10' 56.2040"
Chord Bear = 82° 56' 25.9309"

Course from PT A05700200 to PC A05700210 88° 10' 56.2040" Dist 755.7384

Curve Data

Curve A05700210
P.I. Station = 600+08.3275 N 2,062,820.9937 E 2,418,126.9325
Delta = 28° 39' 16.3206" (LT)
Degree = 3° 00' 00.1166"
Tangent = 487.7798
Length = 955.1408
Radius = 1,909.8387
External = 61.3064
Long Chord = 945.2179
Mid. Ord. = 59.3997
P.C. Station = 595+20.5476 N 2,062,805.5213 E 2,417,639.3981
P.T. Station = 604+75.6884 N 2,063,068.3571 E 2,418,547.3377
C.C. = N 2,064,714.3990 E 2,417,578.8182
Back = 88° 10' 56.2040"
Ahead = 59° 31' 39.8834"
Chord Bear = 73° 51' 18.0437"

Course from PT A05700210 to A057150 59° 31' 39.8834" Dist 200.0014

Point A057150 N 2,063,169.7820 E 2,418,719.7138 Sta 606+75.6898

Ending chain US20 description

FILE NAME = H:\PROJECTS\2945\DGNS\09205507\2055071\VC.dgn	USER NAME = #USER#	DESIGNED - AAF	REVISED -	STATE OF ILLINOIS DEPARTMENT OF TRANSPORTATION	US ROUTE 20 EXISTING HORIZONTAL & VERTICAL CONTROL			HOHI HARRY O. NEFFER-ASSOCIATES, INC. DESIGN AND CONSULTING ENGINEERS 55 East Jackson Blvd. Suite 600 Chicago, IL 60604 312-548-8111		PROJECT NUMBER 2945
PLOT SCALE = 200.0000' / IN.	CHECKED - BAP	REVISED -	REVISED -		F.A.P. SECTION	COUNTY	TOTAL SHEETS	SHEET NO.	CONTRACT NO. 64D15	
PLOT DATE = 8/7/2009	DATE - 8/7/2009	REVISED -	REVISED -		301	21 VBR	STEPHENSON	112		21
					SCALE:	SHEET NO.	OF	SHEETS	STA.	TO