

DATE	
BY	
REVISION	
NOTED	
ALIGNED	
CHECKED	
CAD FILE NAME	
NO.	
PLAN	

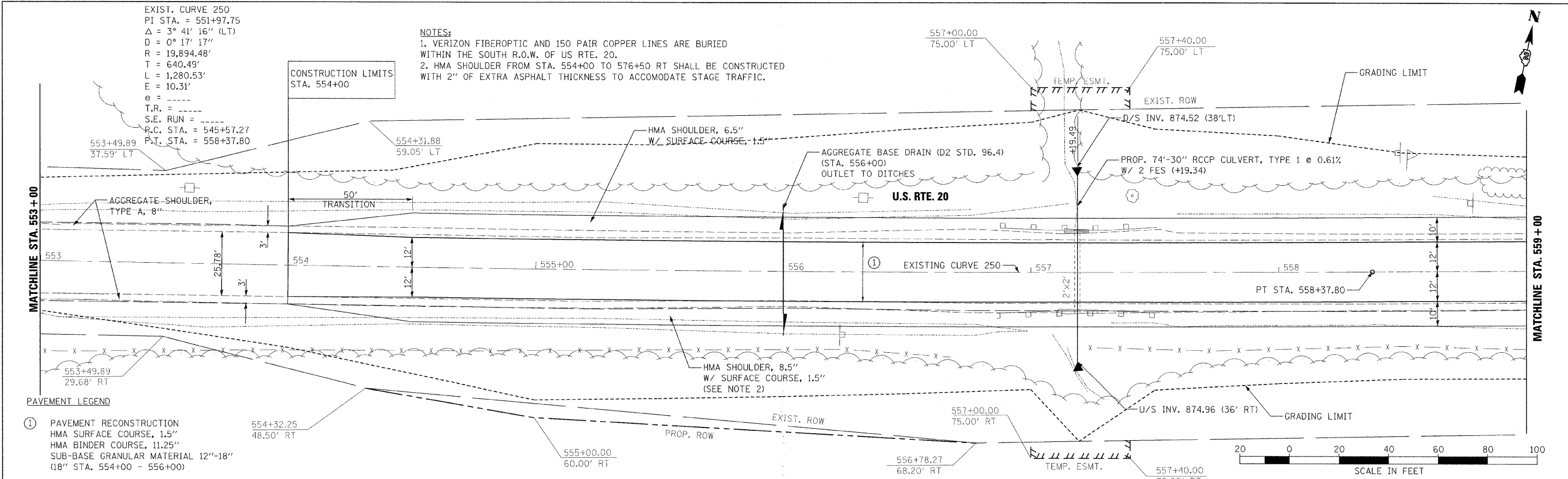
DATE	
BY	
REVISION	
NOTED	
ALIGNED	
CHECKED	
CAD FILE NAME	
NO.	
PROFILE	

HARRY O. WALTER ASSOCIATES, INC.
 CIVIL ENGINEERS
 2945
 55 East Jackson Blvd.
 Chicago, IL 60604
 312-566-8811

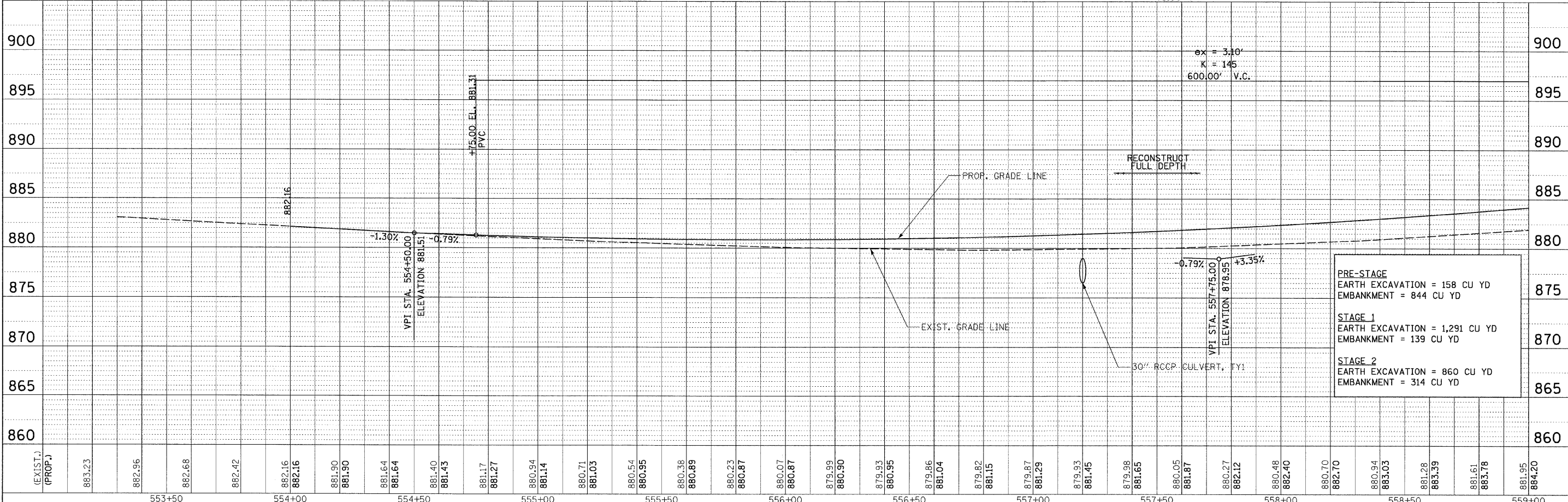
EXIST. CURVE 250
 PI STA. = 551+97.75
 $\Delta = 3^\circ 41' 16''$ (LT)
 $D = 0^\circ 17' 17''$
 $R = 19,894.48'$
 $T = 640.49'$
 $L = 1,280.53'$
 $E = 10.31'$
 $e = \text{---}$
 $T.R. = \text{---}$
 $S.E. RUN = \text{---}$
 $P.C. STA. = 545+57.27$
 $P.T. STA. = 558+37.80$

NOTES:
 1. VERIZON FIBEROPTIC AND 150 PAIR COPPER LINES ARE BURIED WITHIN THE SOUTH R.O.W. OF US RTE. 20.
 2. HMA SHOULDER FROM STA. 554+00 TO 576+50 RT SHALL BE CONSTRUCTED WITH 2" OF EXTRA ASPHALT THICKNESS TO ACCOMMODATE STAGE TRAFFIC.

CONSTRUCTION LIMITS
 STA. 554+00



PAVEMENT LEGEND
 ① PAVEMENT RECONSTRUCTION
 HMA SURFACE COURSE, 1.5"
 HMA BINDER COURSE, 11.25"
 SUB-BASE GRANULAR MATERIAL 12"-18"
 (18" STA. 554+00 - 556+00)



FILE NAME =	USER NAME = #USER#	DESIGNED AAF	REVISED -	STATE OF ILLINOIS DEPARTMENT OF TRANSPORTATION	US ROUTE 20 PROPOSED ROADWAY PLAN & PROFILE	F.A.P. RTE.	SECTION	COUNTY	TOTAL SHEETS	SHEET NO.	
6:\PROJECTS\2945\VDGNS\09205507\205507P1.dwg		DRAWN AAF	REVISED -			301	21 VBR	STEPHENSON	112	25	
PLOT SCALE = 28.0000' / IN.		CHECKED BAP	REVISED -			CONTRACT NO. 64D15					
PLOT DATE = 8/7/2009		DATE - 8/7/2009	REVISED -			FED. ROAD DIST. NO. (ILLINOIS) FED. AID PROJECT					