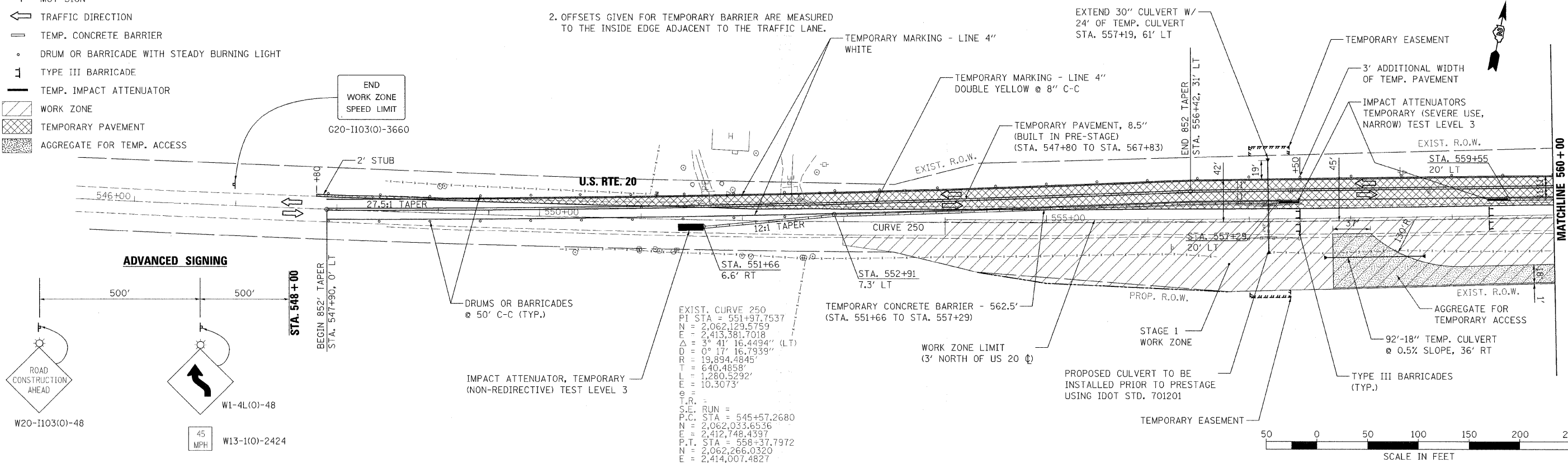


**MOT LEGEND**

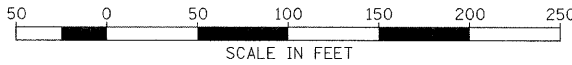
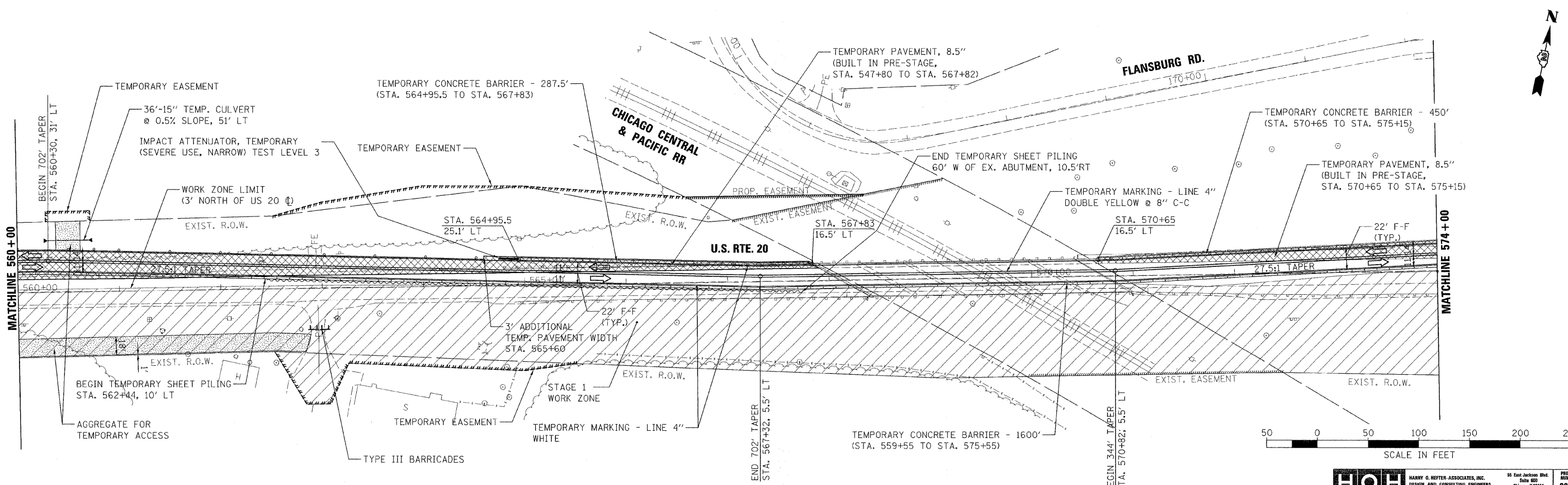
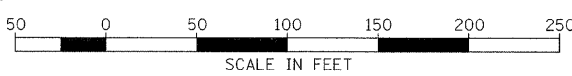
- 4 MOT SIGN
- ← TRAFFIC DIRECTION
- ▬ TEMP. CONCRETE BARRIER
- DRUM OR BARRICADE WITH STEADY BURNING LIGHT
- ⊥ TYPE III BARRICADE
- ▬ TEMP. IMPACT ATTENUATOR
- ▨ WORK ZONE
- ▩ TEMPORARY PAVEMENT
- ▧ AGGREGATE FOR TEMP. ACCESS

**NOTES:**

1. ADVANCED SIGNING SHALL FOLLOW IDOT STD. 701326 FOR PRE-STAGE CONSTRUCTION.
2. OFFSETS GIVEN FOR TEMPORARY BARRIER ARE MEASURED TO THE INSIDE EDGE ADJACENT TO THE TRAFFIC LANE.



EXIST. CURVE 250  
 P.I. STA = 551+97.7537  
 N = 2,062,129.5759  
 E = 2,413,381.7018  
 Δ = 3° 41' 16.4494" (LT)  
 D = 0° 17' 16.7939"  
 R = 19,894.4845'  
 T = 640.4858'  
 L = 1,280.9716'  
 E = 10.3073'  
 T.R. =  
 S.E. RUN =  
 P.C. STA = 545+57.2680  
 N = 2,062,033.6536  
 E = 2,412,748.4397  
 P.T. STA = 558+37.7972  
 N = 2,062,266.0320  
 E = 2,414,007.4827



<b>HOH</b>		HARRY G. HESTER ASSOCIATES, INC. DESIGN AND CONSULTING ENGINEERS		55 East Jackson Blvd. Suite 800 Chicago, IL 60604 312-545-8131		PROJECT NUMBER <b>2945</b>	
F.A.P. RTE. 301	SECTION 21 VBR	COUNTY STEPHENSON	TOTAL SHEETS <b>112</b>	SHEET NO. <b>39</b>		CONTRACT NO. 64D15	
FED. ROAD DIST. NO. [ILLINOIS] FED. AID PROJECT							

FILE NAME = H:\PROJECTS\2945\GNS\09205507\205507\TG1A.dgn	USER NAME = #USER#	DESIGNED - AAF	REVISED -
PLOT SCALE = 50.0000' / IN.	CHECKED - BAP	REVISOR -	REVISED -
PLOT DATE = 8/7/2009	DATE = 8/7/2009	REVISOR -	REVISED -

**STATE OF ILLINOIS  
DEPARTMENT OF TRANSPORTATION**

**US ROUTE 20  
MAINTENANCE OF TRAFFIC - STAGE 1**

SCALE: 1"=50' SHEET NO. 1 OF 2 SHEETS STA. 546+00 TO STA. 574+00