

B:20:11 AM

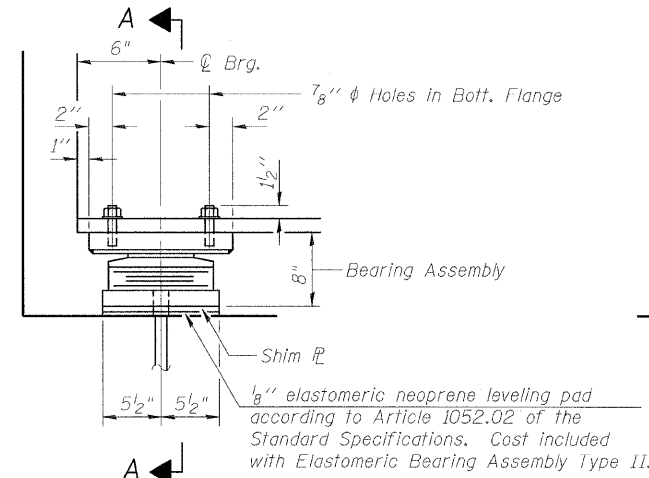
8/16/2003

H:\Pro\lects\2945.D6\Structural\ACCPRRUS20 OVER ICR PREFINAL DWGS\100096-64D50-020-BEARINGDET.ALSSHT1.dgn

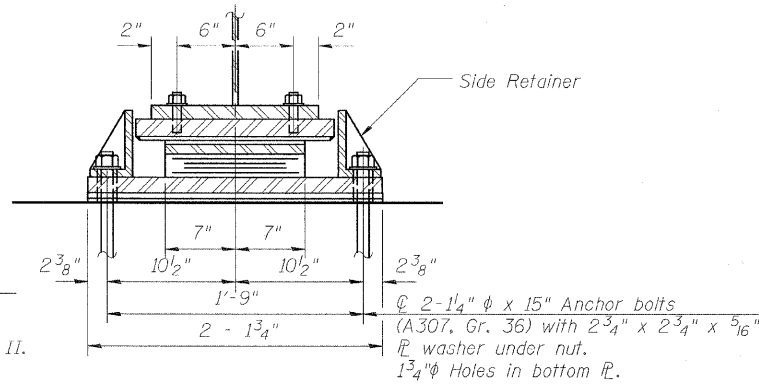
STATE OF ILLINOIS  
DEPARTMENT OF TRANSPORTATION

ROUTE NO.	SECTION	COUNTY	SHEET NO.	SHEET NO.
F.A.P. 301	21-VBR 21RS-2	STEPHENSON	112	68
FED. ROAD DIST. NO. 7	ILLINOIS	FED. AID PROJECT-		

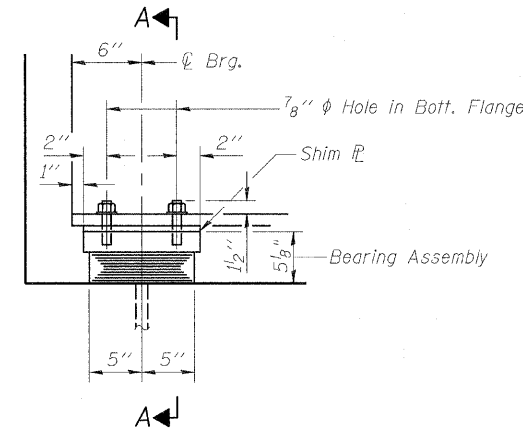
Contract #64D15



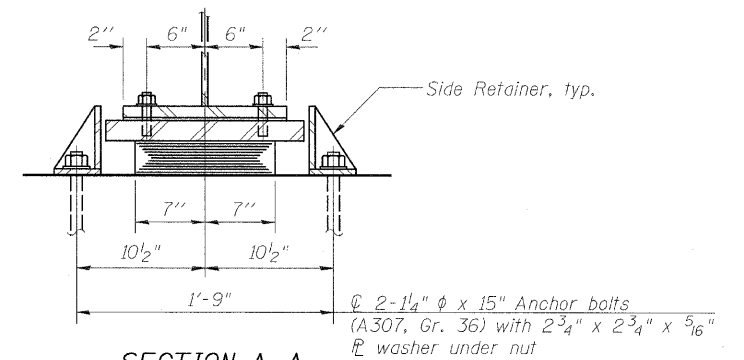
ELEVATION AT E. ABUT.  
(Looking South)



SECTION A-A



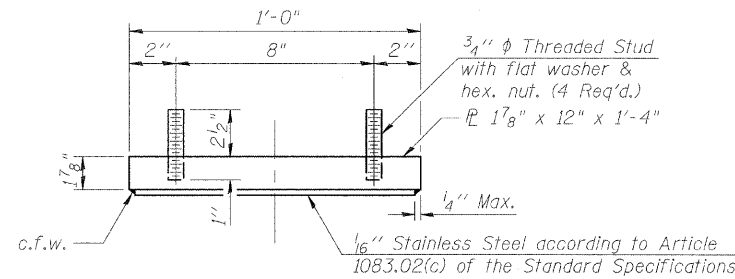
ELEVATION AT W. ABUT.  
(Looking North)



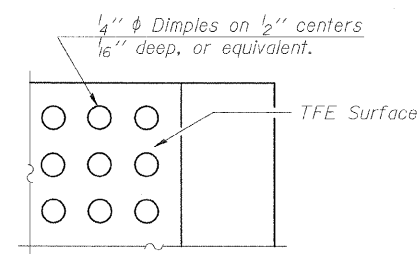
SECTION A-A

TYPE II ELASTOMERIC EXP. BRG.

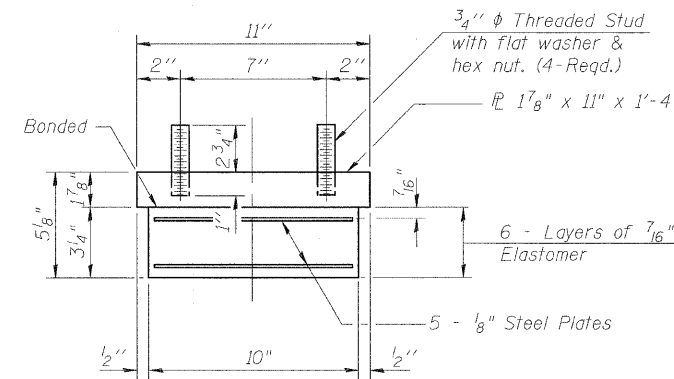
TYPE I ELASTOMERIC EXP. BRG.



TOP BEARING ASSEMBLY



PLAN-TFE SURFACE



BEARING ASSEMBLY

Notes:

Anchor bolts shall be ASTM F1554 all-thread (or an Engineer-approved alternate material) of the grade(s) and diameter(s) specified. ASTM A307 Grade C anchor bolts may be used in lieu of ASTM F1554 Grade 36 (Fy=36ksi). The corresponding specified grade of AASHTO M314 anchor bolts may be used in lieu of ASTM F1554.

Anchor bolts at fixed bearings may be either cast in place or installed in holes drilled after the supported member is in place.

Anchor bolts for side retainers may be cast in place or installed in holes drilled before or after members are in place.

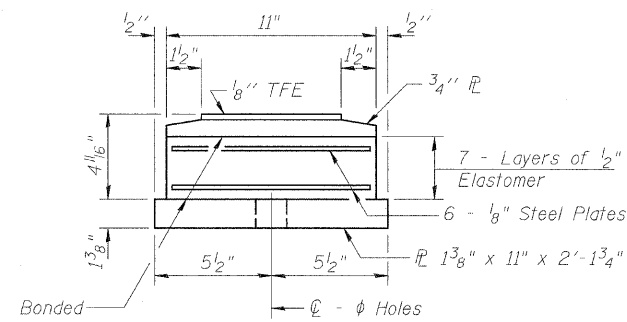
Drilled and set anchor bolts shall be installed according to Article 521.06 of the Standard Specifications.

Side retainers and other steel members required for the bearing assembly shall be included in the cost of Elastomeric Bearing Assembly, Type I and Type 2.

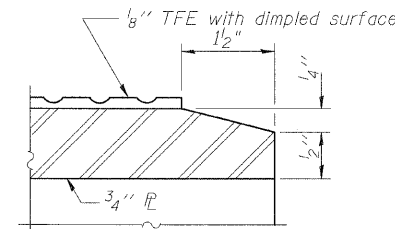
Anchor bolts for Type II bearings shall be placed in holes drilled through the bottom bearing plate after members are in place. Side retainers shall be placed after bolts are installed.

The 1/8" TFE sheet shall be bonded directly to the top steel plate with a two-component, medium viscosity epoxy resin, conforming to the requirements of the Federal Specification MMM-A-134, Type I. The bond agent shall be applied on the full area of the contact surfaces.

Bonding of 1/8" TFE sheet during vulcanizing process will be permitted provided the process and method of adjusting assembly height is approved by the Engineer.

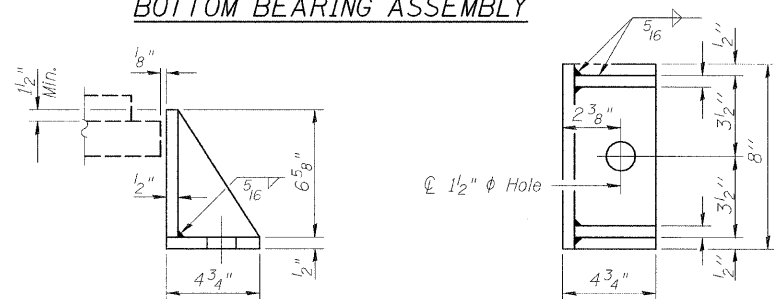


BOTTOM BEARING ASSEMBLY



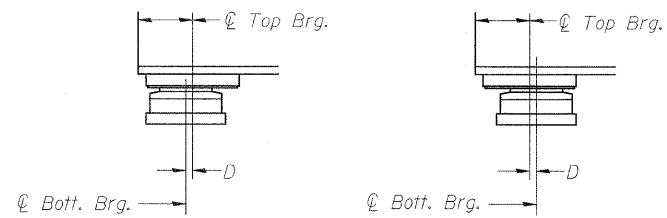
SECTION THRU TFE

Note:  
Shim plates shall not be placed under Bearing Assembly.



SIDE RETAINER

Equivalent rolled angle with stiffeners will be allowed in lieu of welded plates.



BELOW 50°F.

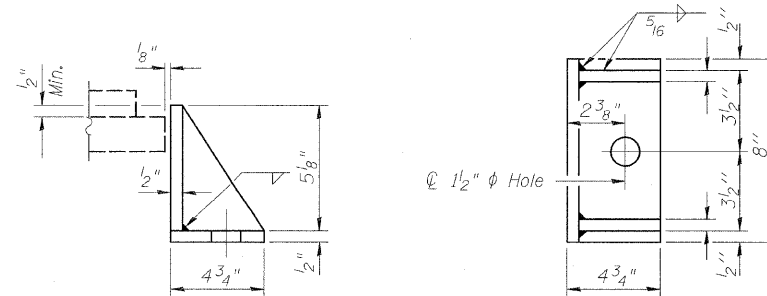
(Move bott. brg. away from fixed brg.)

ABOVE 50°F.

(Move bott. brg. toward fixed brg.)

SETTING ANCHOR BOLTS AT EXP. BRG.

D=1/8" per each 100' of expansion for every 15° temp. change from the normal temp. of 50°F.



SIDE RETAINER

Equivalent rolled angle with stiffeners will be allowed in lieu of welded plates.

DESIGNED	MMH
CHECKED	CEN
DRAWN	R.VEJAR
CHECKED	CEN

BILL OF MATERIAL

Item	Unit	Total
Elastomeric Bearing Assembly Type I	Each	18
Elastomeric Bearing Assembly Type II	Each	9
Anchor Bolts 1 1/4"	Each	36
Anchor Bolts 1 1/2"	Each	18
Anchor Bolts 2"	Each	18

BEARING DETAILS SHEET 1

US 20 OVER ILLINOIS CENTRAL RAILROAD  
F.A.P. RTE. 301 - SEC. 21-VBR & 21RS-2

STEPHENSON COUNTY

STATION 569+56.19

STRUCTURE NO. 089-0077

HOH

HARRY O. HETTER-ASSOCIATES, INC.  
DESIGN AND CONSULTING ENGINEERS

55 East Jackson Blvd.  
Suite 900  
Chicago, IL 60604  
312-346-6131

PROJECT NUMBER  
2945