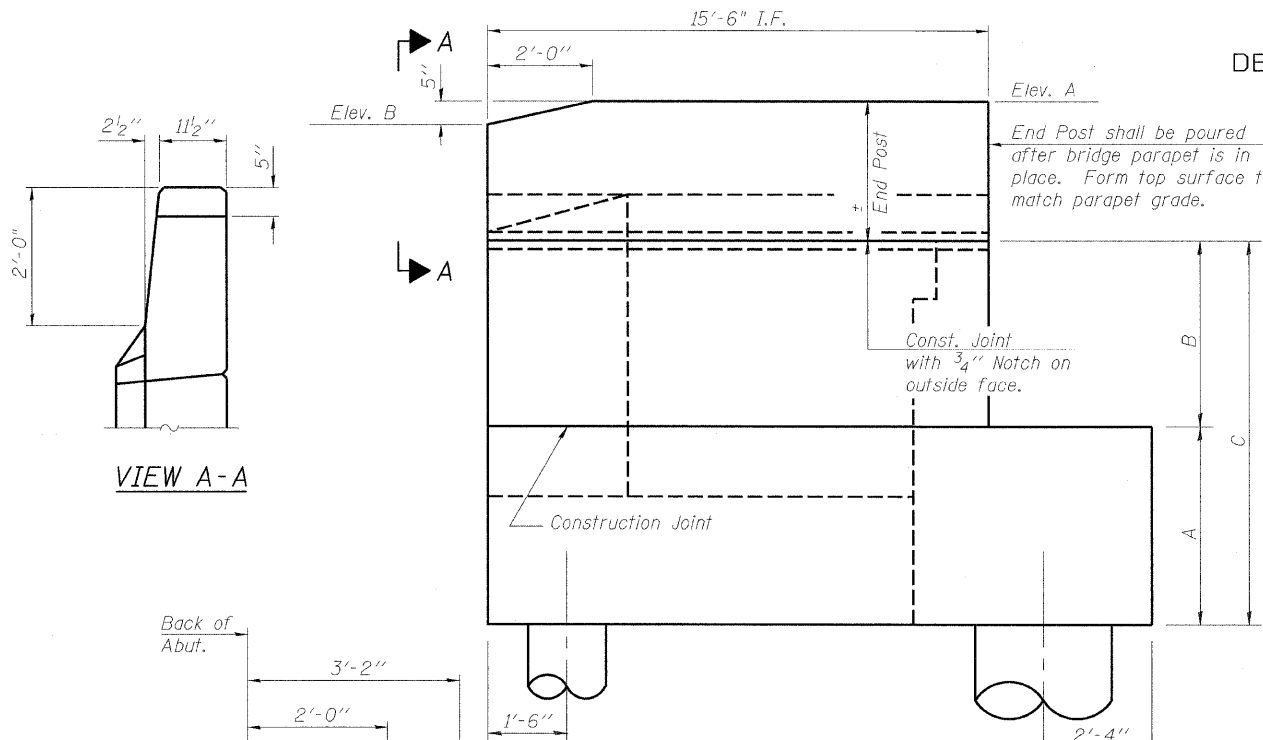


STATE OF ILLINOIS
DEPARTMENT OF TRANSPORTATION

ROUTE NO.	SECTION	COUNTY	TOTAL SHEETS	SHEET NO.
F.A.P. 301	21-VBR 21RS-2	STEPHENSON	112	72
FED. ROAD DIST. NO. 7	ILLINOIS	FED. AID PROJECT		

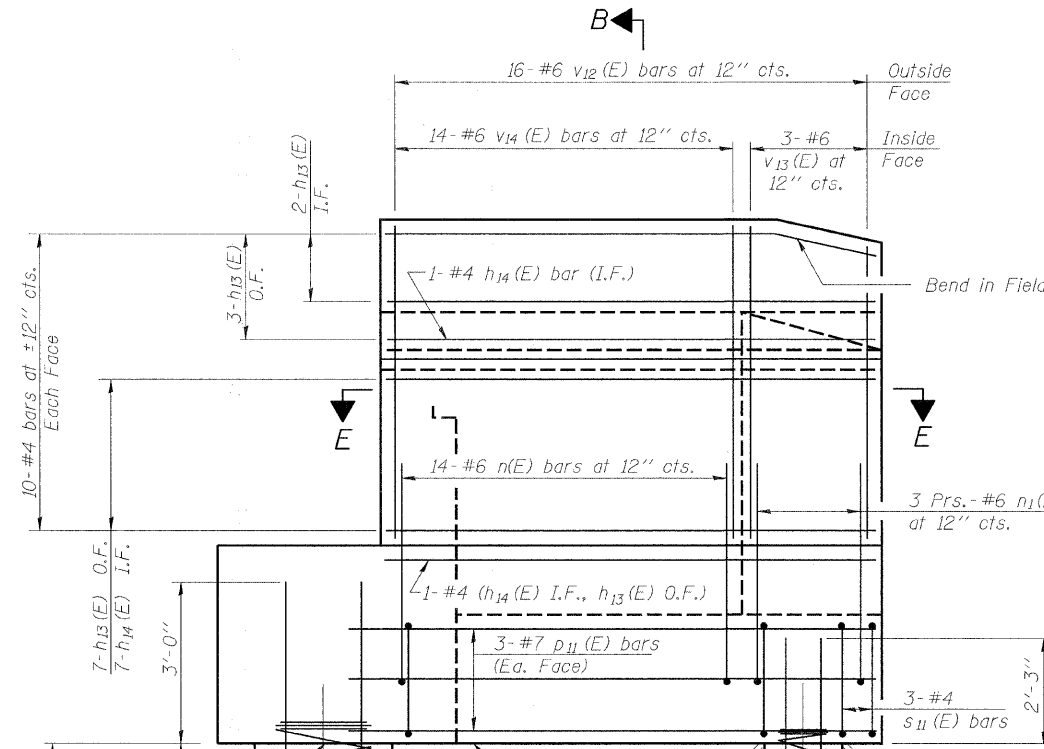
Contract #64D15

SHEET NO. 24
32 SHEETS

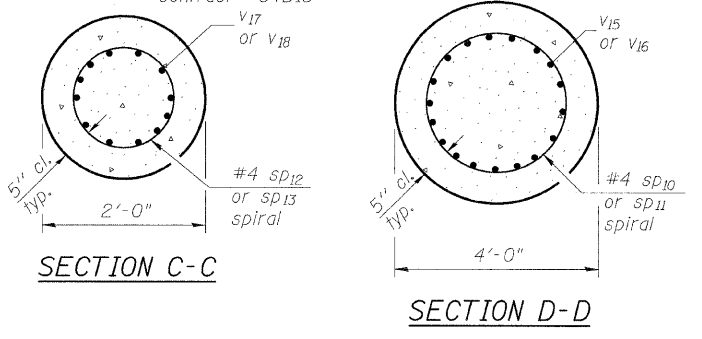


VIEW A-A

WING WALL ELEVATION
Showing Dimensions

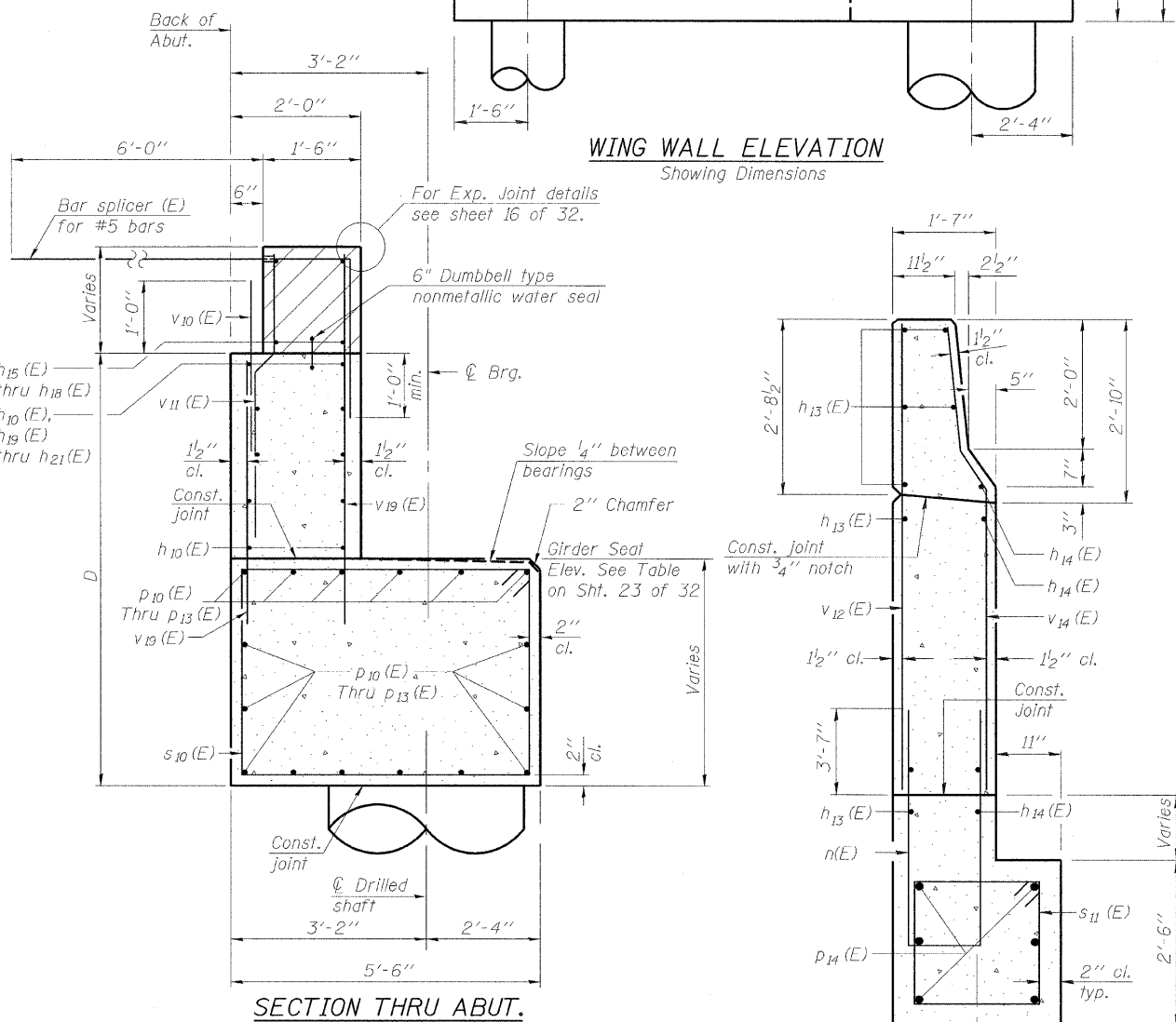


WING WALL & DRILLED SHAFT ELEVATION
Showing Reinforcement

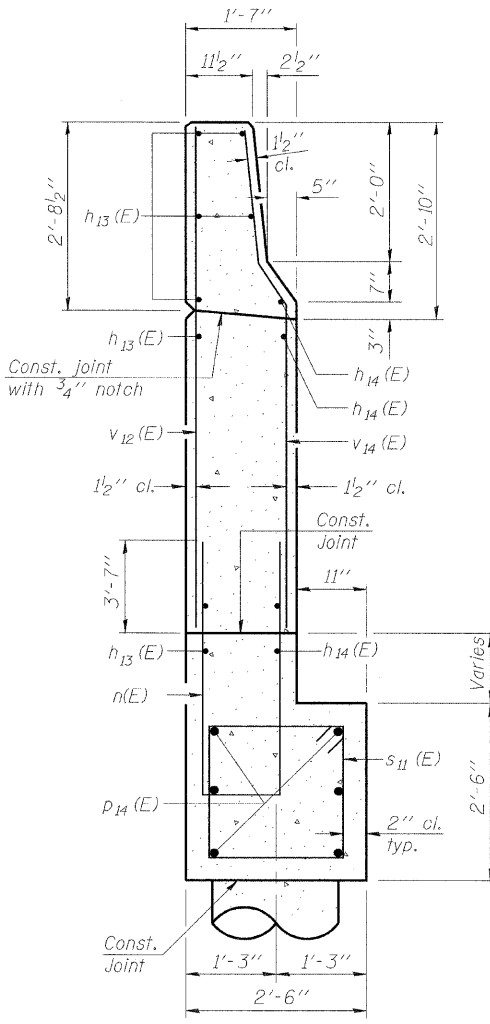


SECTION C-C

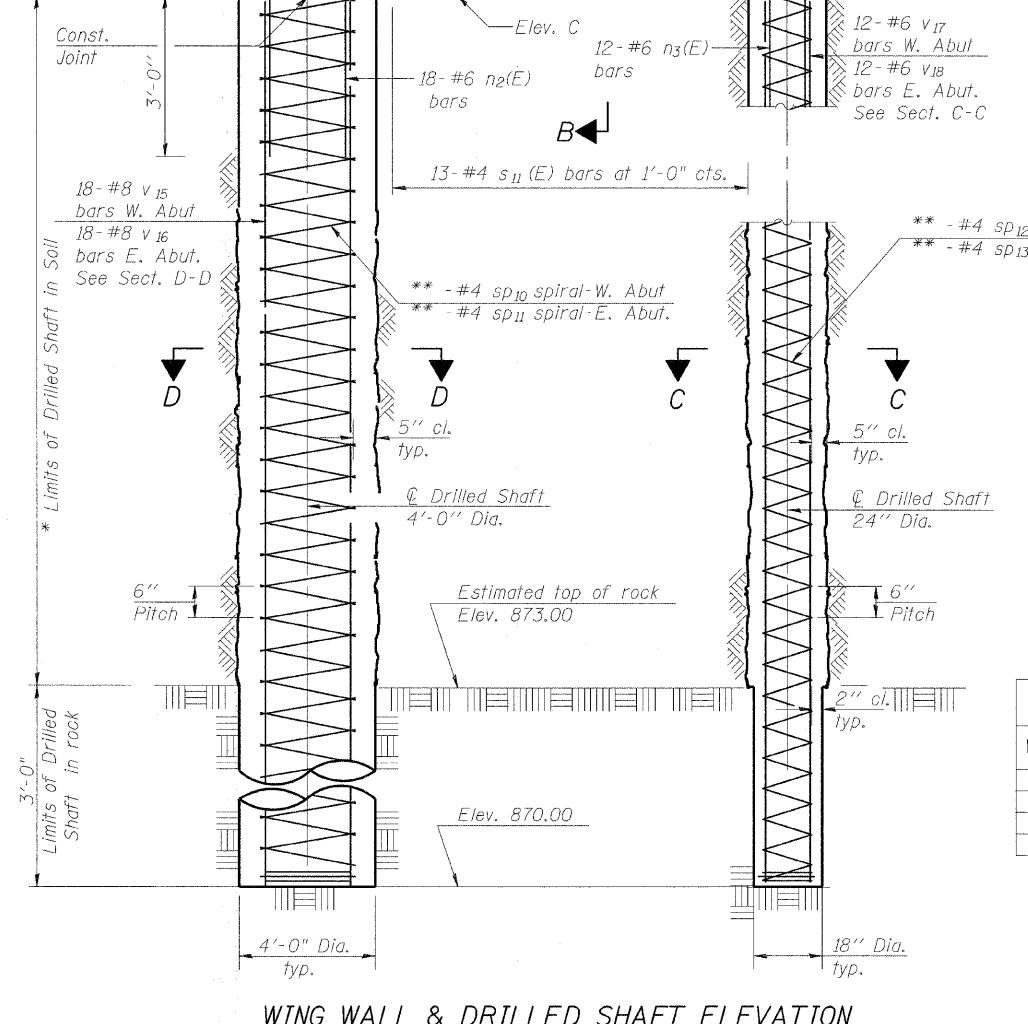
SECTION D-D



SECTION THRU ABUT.



SECTION B-B



Notes:
Quantity of concrete in end post included with Concrete Superstructure on sheet 2 of 32.
Min. lap for spirals = 1'-8".
Pour steps monolithically with cap.
Concrete sealer shall be applied to all exposed surfaces of backwalls, bridge seats, and front face of shaft caps.

* The quantities and detailing are based on the estimated elevations shown on the plans. The actual elevations may differ at each shaft and corresponding adjustments shall be made to the drilled shaft and reinforcement quantities and payment limits.

** Provide 1/2 extra turns top and bottom of each drilled shaft. Extend spiral 2" into abutment or wing wall cap. Provide min. 4- #4 spacers or equivalent.

WINGWALL	ELEVATIONS				DIMENSIONS			
	ELEV. A	ELEV. B	ELEV. C		A	B	C	D
WW1	910.04	909.78	897.55		4'-2"	5'-6"	9'-8"	8'-6"
WW2	909.78	909.55	897.55		4'-0"	5'-5"	9'-5"	8'-6"
WW3	910.53	909.98	897.08		4'-7"	6'-0"	10'-7"	8'-9"
WW4	909.93	909.35	897.08		4'-0"	6'-0"	10'-0"	8'-9"

ABUTMENT DETAILS
US 20 OVER ILLINOIS CENTRAL RAILROAD
F.A.P. RTE. 301 - SEC. 21-VBR & 21RS-2
STEPHENSON COUNTY
STATION 569+56.19
STRUCTURE NO. 089-0077

DESIGNED	MMH
CHECKED	CEN
DRAWN	R.VEJAR
CHECKED	CEN

Note:
Abutment drilled shafts are designed for allowable end bearing pressure of 10 tsf on rock.