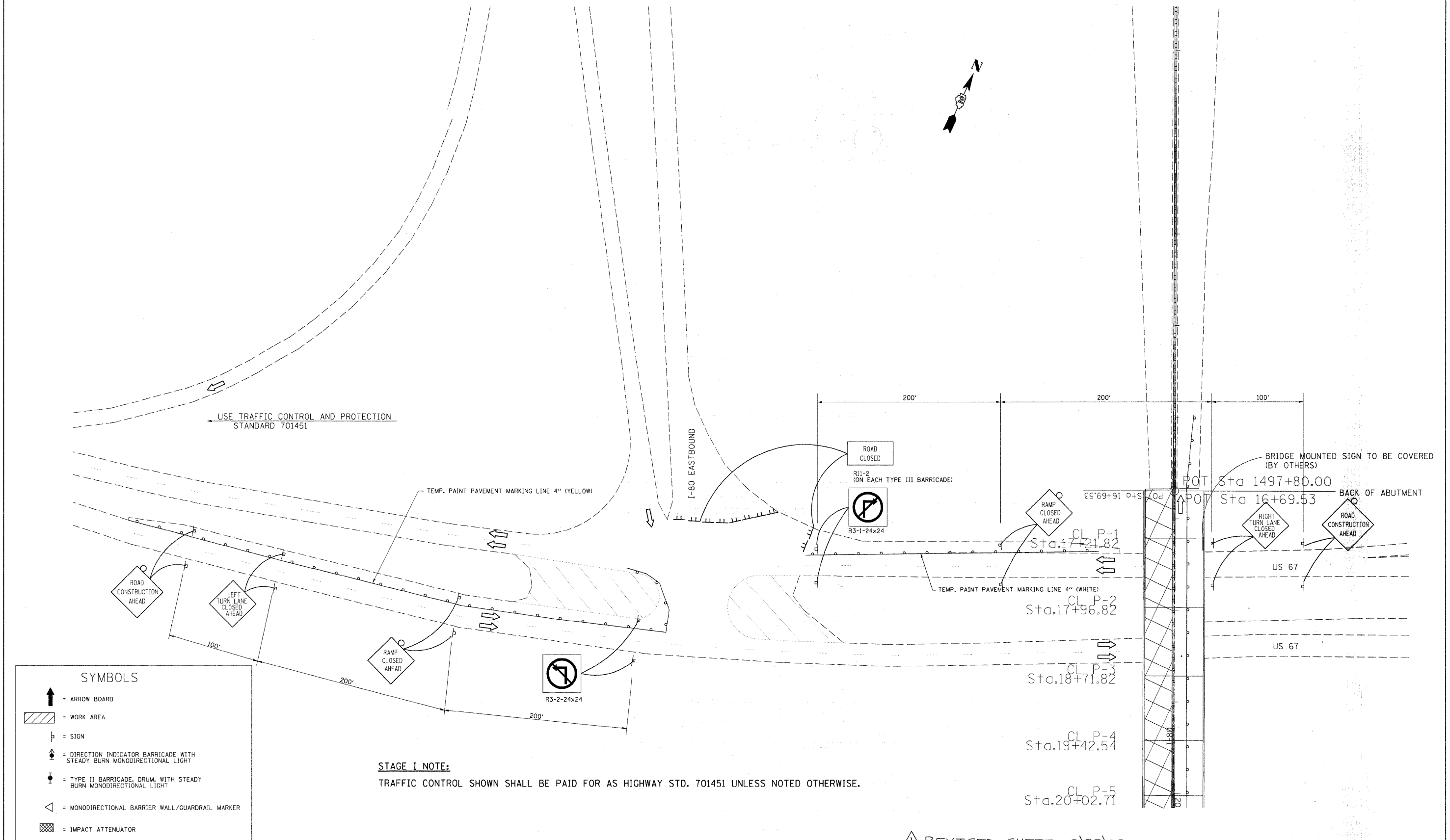


STAGE I (IOWA) RAMP



STAGE I NOTE:

TRAFFIC CONTROL SHOWN SHALL BE PAID FOR AS HIGHWAY STD. 701451 UNLESS NOTED OTHERWISE.

REVISOR: 10/28/09

FILE NAME =	USER NAME = cushmanbw	DESIGNED -	REVISED -
c:\pwork\pwork\cushmanbw\d0149166\d01409astg-A.dgn		DRAWN -	REVISED -
	PLOT SCALE = 50.0000' / IN.	CHECKED -	REVISED -
	PLOT DATE = Tue Oct 20 18:49:12 2009	DATE -	REVISED -

STATE OF ILLINOIS
DEPARTMENT OF TRANSPORTATION

STAGE I (IOWA) RAMP

SCALE: SHEET NO. OF SHEETS STA. TO STA.

F.A.I. RTE.	SECTION	COUNTY	TOTAL SHEETS	SHEET NO.
80	(81-1B) M-4	ROCK ISLAND	75	12
FED. ROAD DIST. NO. ILLINOIS FED. AID PROJECT			CONTRACT NO. 64F31	