

STATE OF ILLINOIS
DEPARTMENT OF TRANSPORTATION

Note:
Existing reinforcement shall be cleaned
and incorporated into the new construction.
Cost included with Concrete Removal.

**SUPERSTRUCTURE
BILL OF MATERIAL**

Bar	No.	Size	Length	Shape
* d(E)	208	#5	21'-3"	—
** d ₁ (E)	160	#5	20'-6"	—
d ₂ (E)	96	#6	6'-0"	—
d ₃ (E)	16	#5	2'-0"	—
b(E)	800	#5	3'-3"	—
d(E)	96	#5	3'-0"	┘
d ₁ (E)	96	#5	2'-7"	┘
d ₂ (E)	96	#4	3'-0"	┘
d ₃ (E)	96	#4	3'-11"	┘
e(E)	96	#4	4'-2"	—
e ₁ (E)	32	#8	4'-2"	—
e ₂ (E)	32	#5	4'-2"	—
x(E)	492	#6	4'-11"	┘
Reinforcement Bars, Epoxy Coated	Pound		17,040	
Concrete Removal	Cu. Yd.		48.6	
Concrete Superstructure	Cu. Yd.		48.6	
Mechanical Splice	Each		1328	

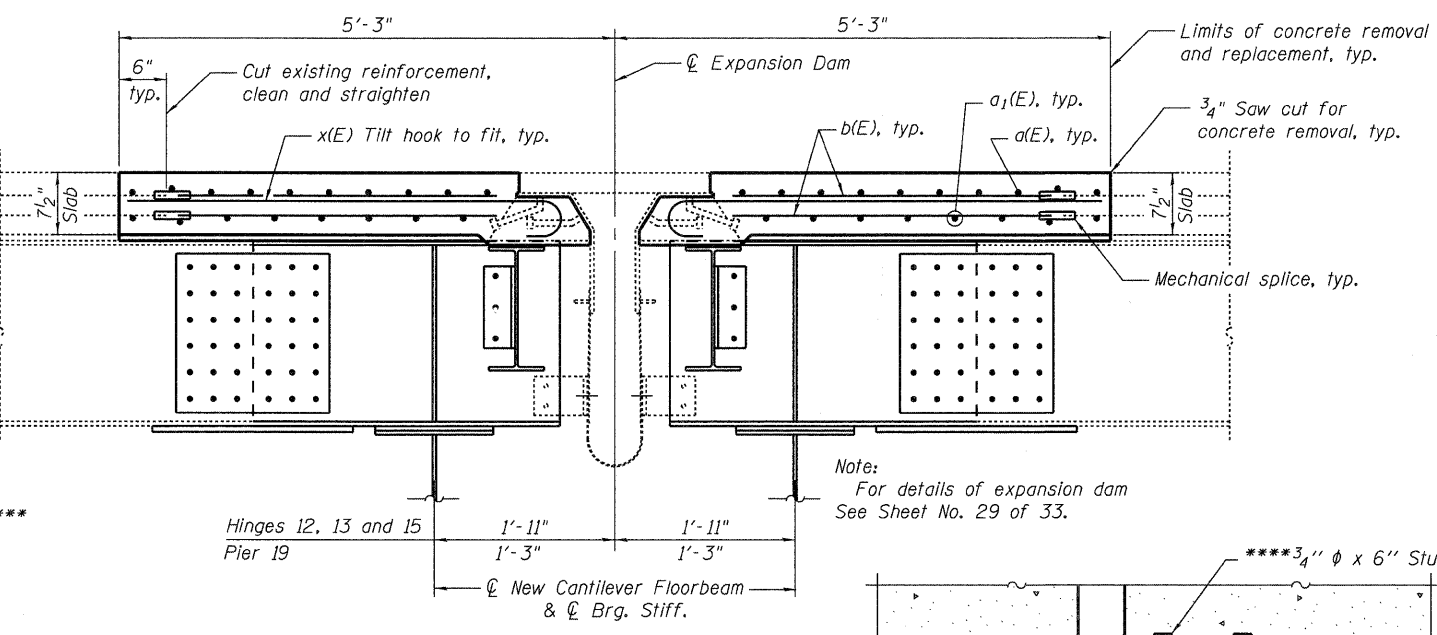
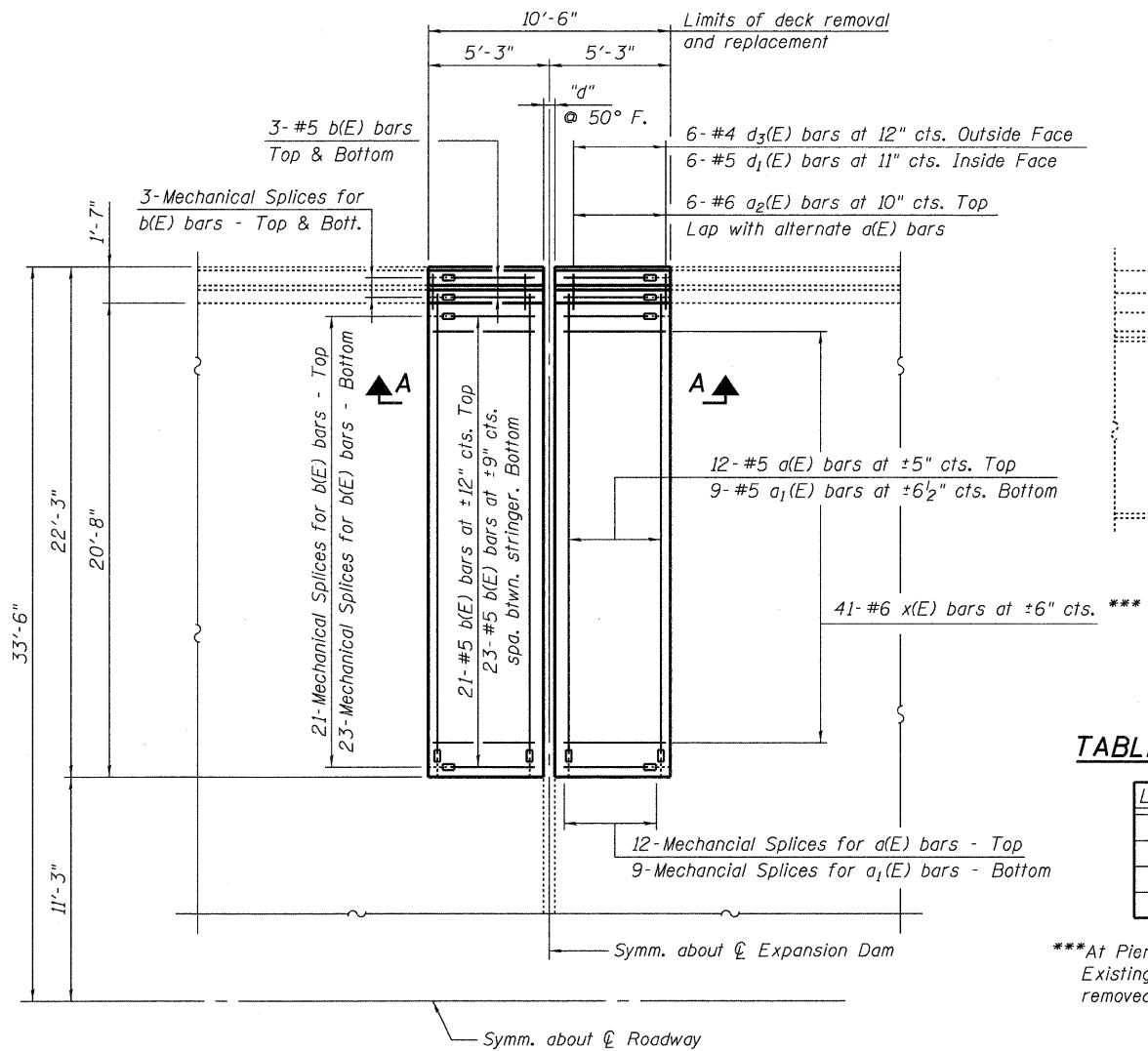
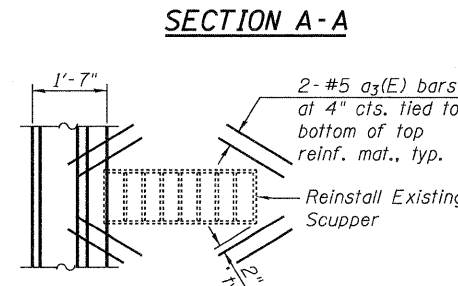


TABLE OF DIMENSIONS

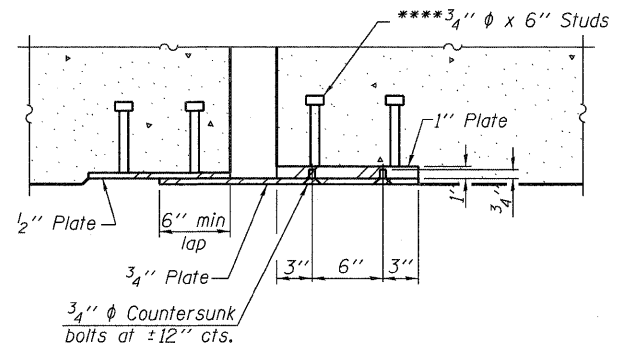
LOCATION	"d"
Hinge 12	6"
Hinge 13	5 1/4"
Hinge 15	6"
Pier 19	6 3/4"

***At Pier Hinges 12, 13 and 15 only.
Existing #6 hooked bars shall be removed.



PLAN AT SCUPPER

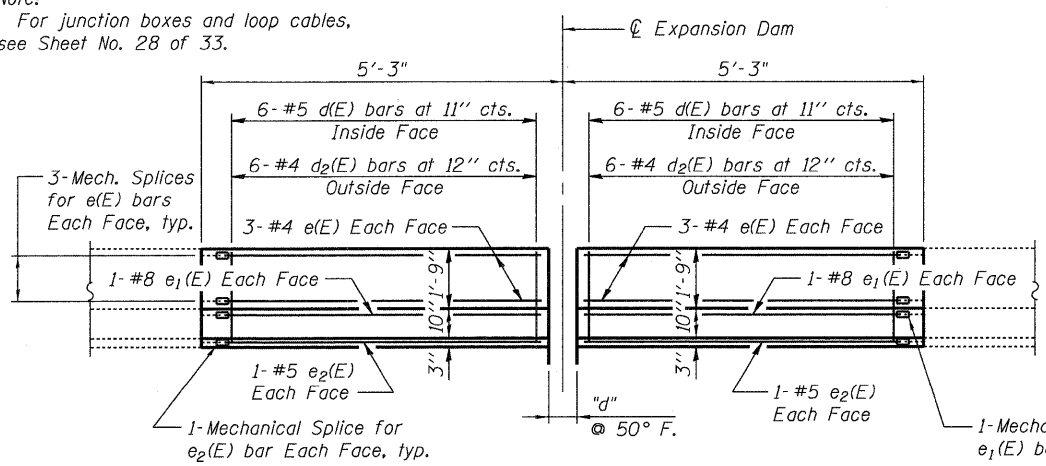
2 Locations
Note: Cut longitudinal reinforcement to clear drainage scuppers.



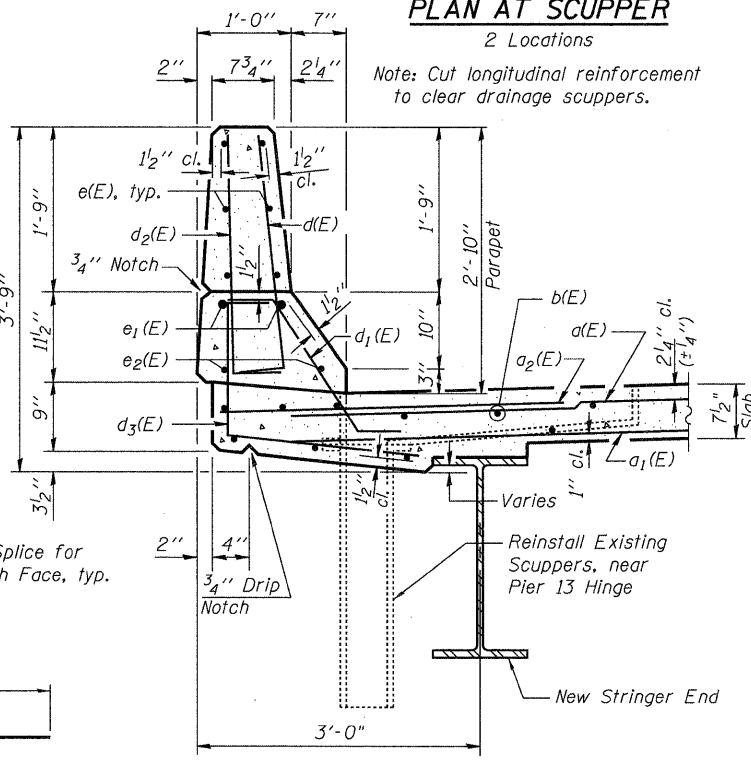
SECTION B-B

**** Granular or solid flux filled headed studs conforming to Article 1006.32 of the Std. Specs., automatically end welded.

Note:
For junction boxes and loop cables,
see Sheet No. 28 of 33.

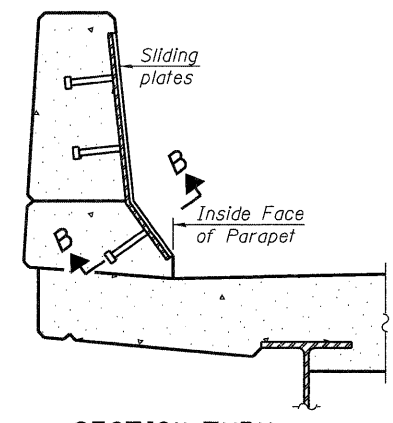


INSIDE ELEVATION OF PARAPET



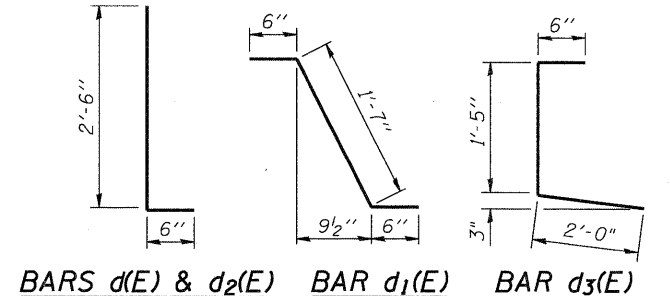
SECTION THRU PARAPET

Showing Scupper



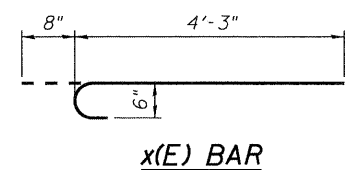
SECTION THRU PARAPET AT JOINT

Note:
Cost of sliding plate assembly at the parapets shall be included with Expansion Joint (Special).
Sliding plate assembly shall be galvanized after fabrication according to Article 520.03 of the Standard Specifications.



PARTIAL DECK REMOVAL AND REPLACEMENT AT EXPANSION DAMS I-80 OVER MISSISSIPPI RIVER STRUCTURE NO. 081-0011

DESIGNED	YSS
CHECKED	DWP
DRAWN	PRC
CHECKED	YSS



x(E) BAR

SHEET NO. 22	F.A.I. RTE.	SECTION	COUNTY	TOTAL SHEETS	SHEET NO.
33 SHEETS	80	(81-1B)M-4	ROCK ISLAND	75	49
		SN 081-0011	CONTRACT NO. 64F31		
		FED. ROAD DIST. NO. 7	ILLINOIS	FED. AID PROJECT	

09/17/09