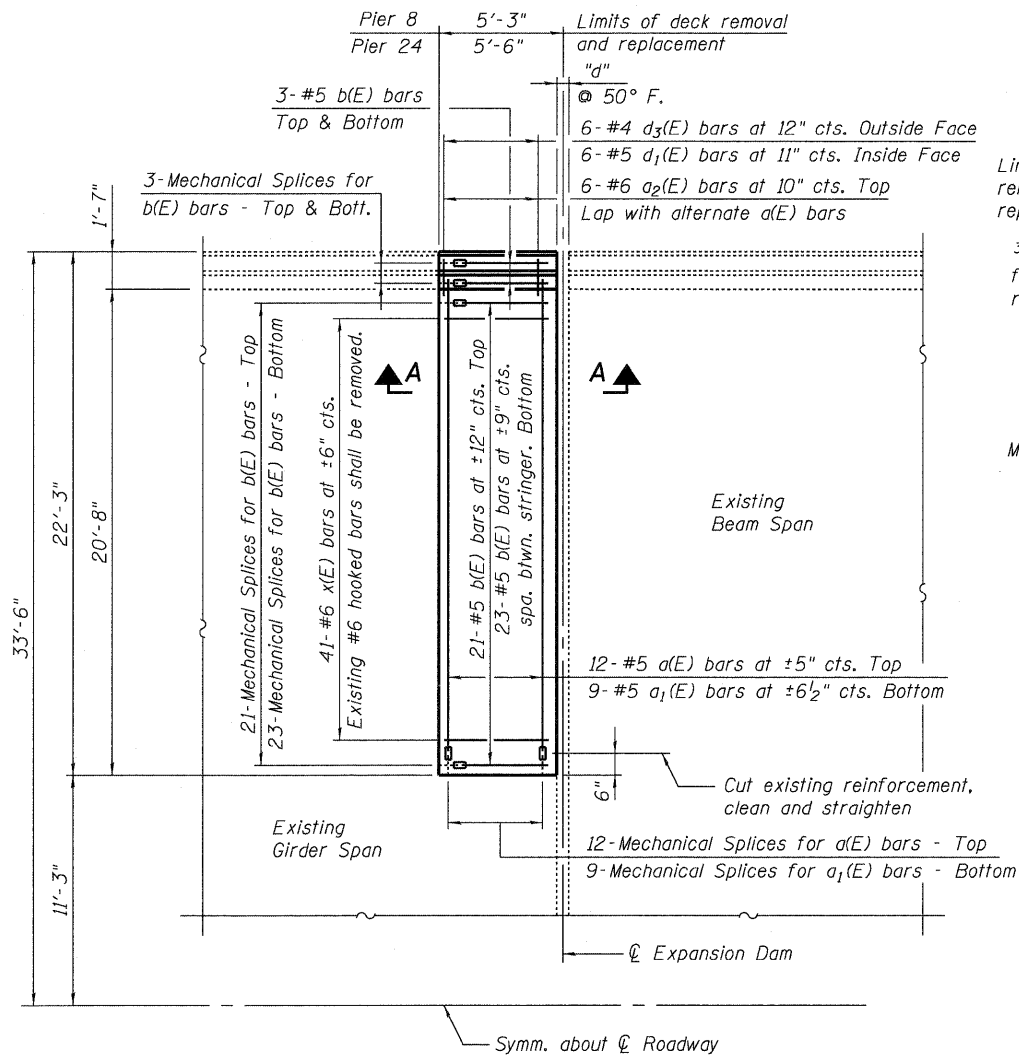


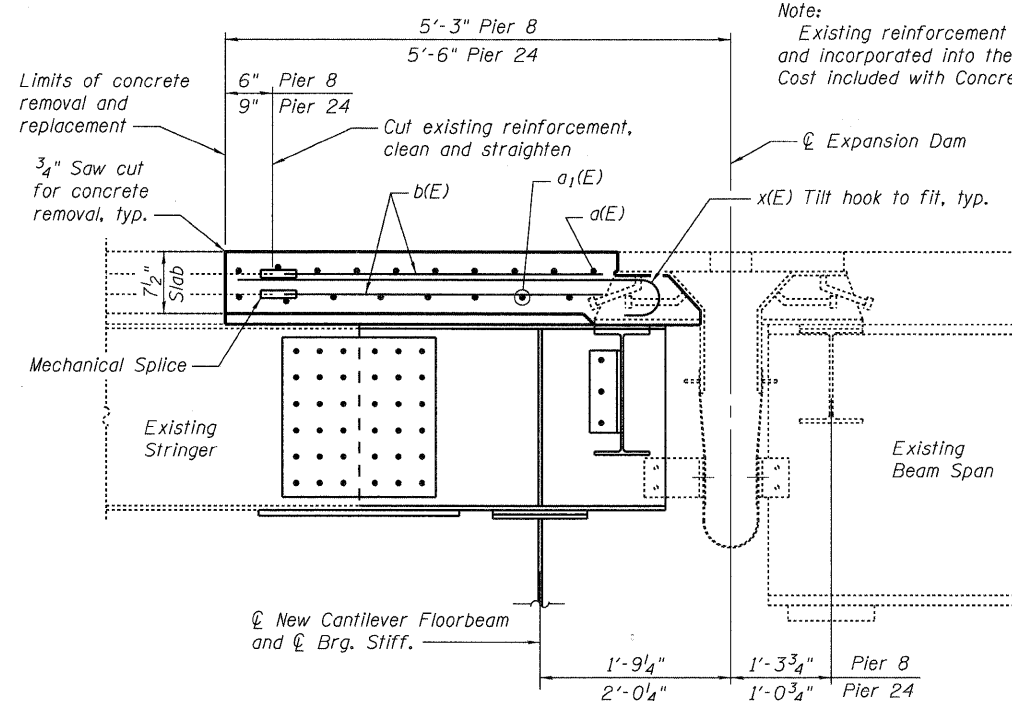
STATE OF ILLINOIS
DEPARTMENT OF TRANSPORTATION

**SUPERSTRUCTURE
BILL OF MATERIAL**

Bar	No.	Size	Length	Shape
a(E)	52	#5	21'-3"	—
a ₁ (E)	40	#5	20'-6"	—
a ₂ (E)	24	#6	6'-0"	—
b(E)	200	#5	3'-3"	—
d(E)	24	#5	3'-0"	┘
d ₁ (E)	24	#5	2'-7"	┘
d ₂ (E)	24	#4	3'-0"	┘
d ₃ (E)	24	#4	3'-11"	┘
e(E)	24	#4	4'-2"	—
e ₁ (E)	8	#8	4'-2"	—
e ₂ (E)	8	#5	4'-2"	—
x(E)	164	#6	4'-11"	┘
Reinforcement Bars, Epoxy Coated		Pound	4560	
Concrete Removal		Cu. Yd.	12.3	
Concrete Superstructure		Cu. Yd.	12.3	
Mechanical Splice		Each	332	

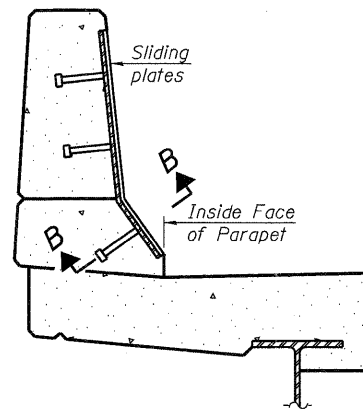


**PARTIAL DECK PLAN AT EXPANSION DAM
FOR PIER 8 AND 24**



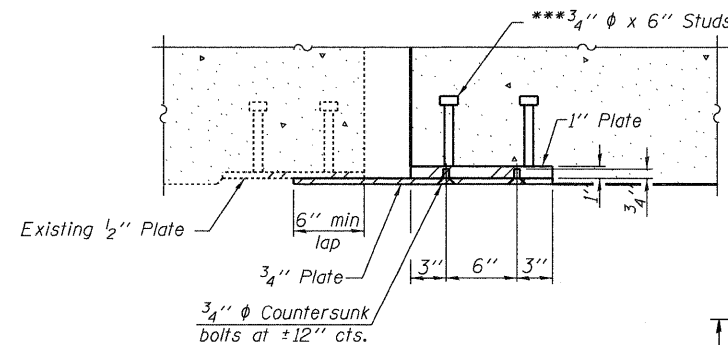
SECTION A-A

Note:
For details of expansion dam,
See Sheet No. 29 of 33.



**SECTION THRU
PARAPET AT JOINT**

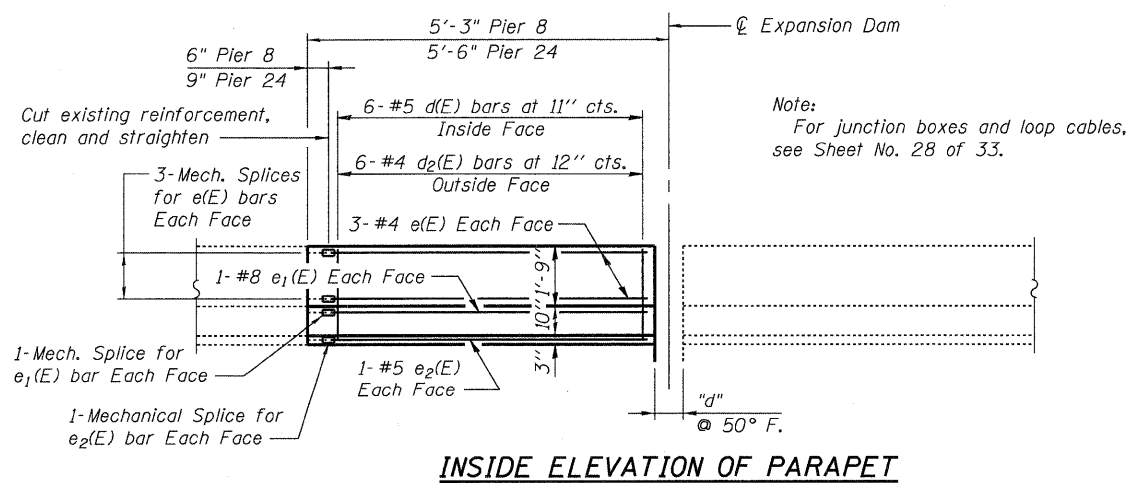
Note:
Cost of sliding plate assembly at the parapets
shall be included with Expansion Joint (Special).
Sliding plate assembly shall be galvanized after
fabrication according to Article 520.03 of the
Standard Specifications.



SECTION B-B

Pier 8 shown, Pier 24 similar

*** Granular or solid flux filled headed
studs conforming to Article 1006.32
of the Std. Specs., automatically
end welded.



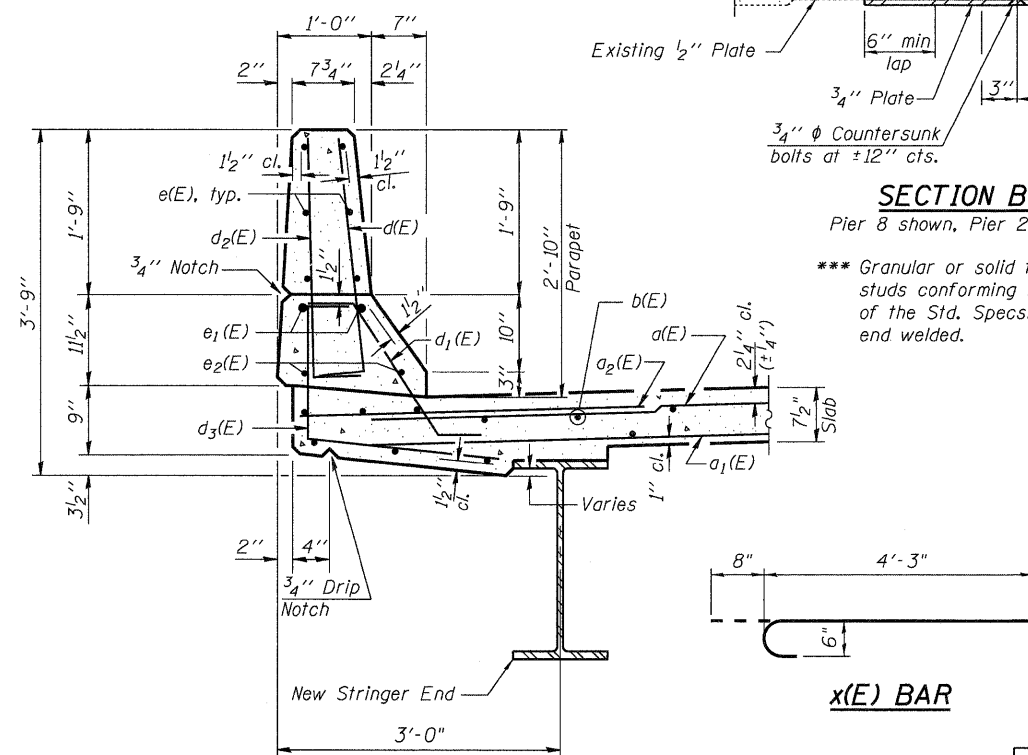
INSIDE ELEVATION OF PARAPET

DESIGNED	YSS
CHECKED	DWP
DRAWN	PRC
CHECKED	YSS

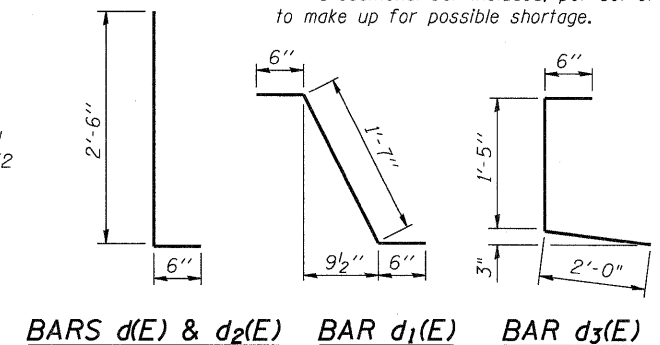


TABLE OF DIMENSIONS

LOCATION	"d"
Pier 8	6"
Pier 24	6 3/4"



SECTION THRU PARAPET



**PARTIAL DECK REMOVAL AND
REPLACEMENT AT EXPANSION DAMS PIER 8 AND 24
I-80 OVER
MISSISSIPPI RIVER
STRUCTURE NO. 081-0011**

SHEET NO. 23 33 SHEETS	F.A.I. RTE. 80	SECTION (81-1B)M-4	COUNTY ROCK ISLAND	TOTAL SHEETS 75	SHEET NO. 50
	SN 081-0011		CONTRACT NO. 64F31		
FED. ROAD DIST. NO. 7 ILLINOIS FED. AID PROJECT					

09/17/09