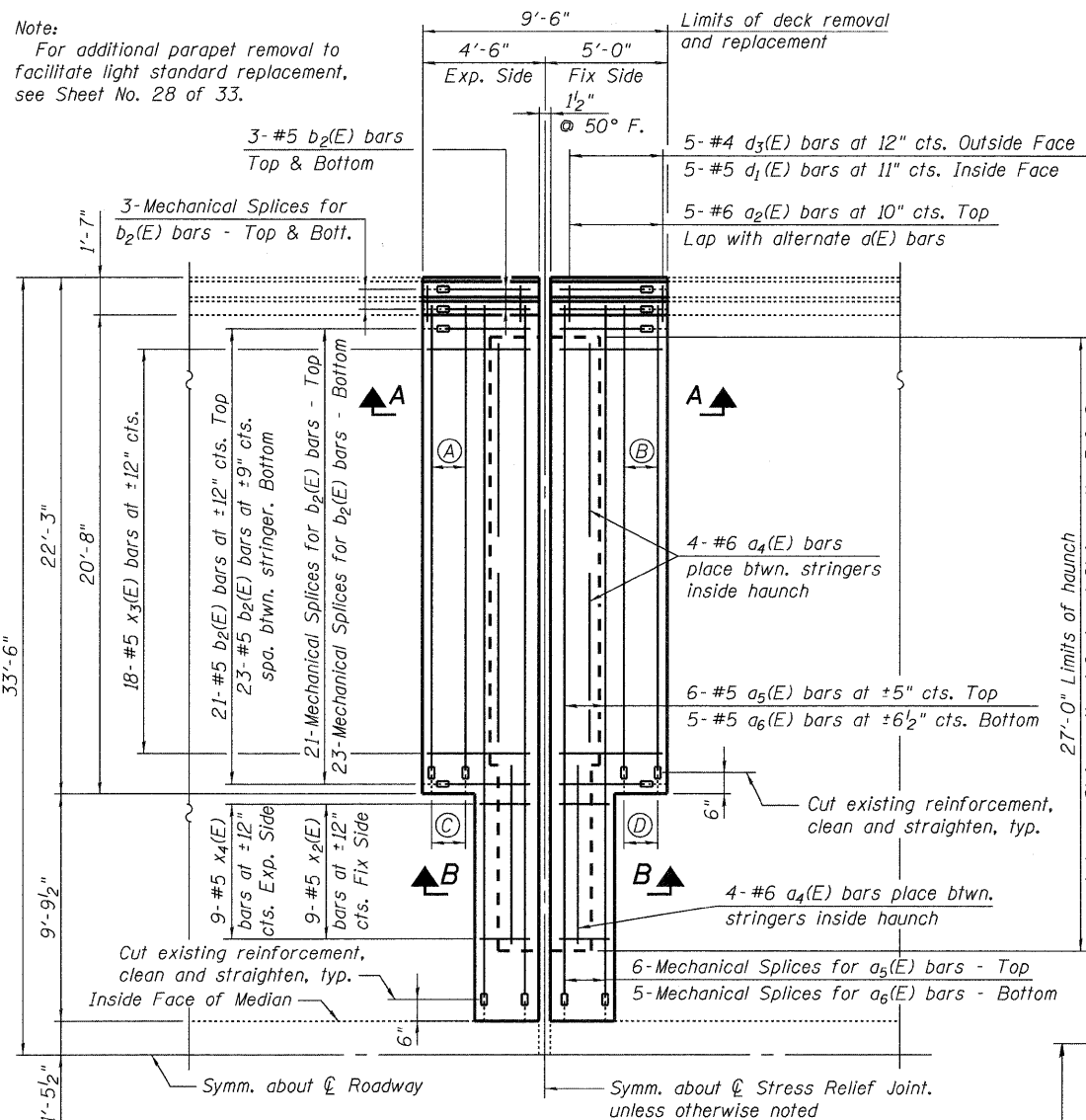
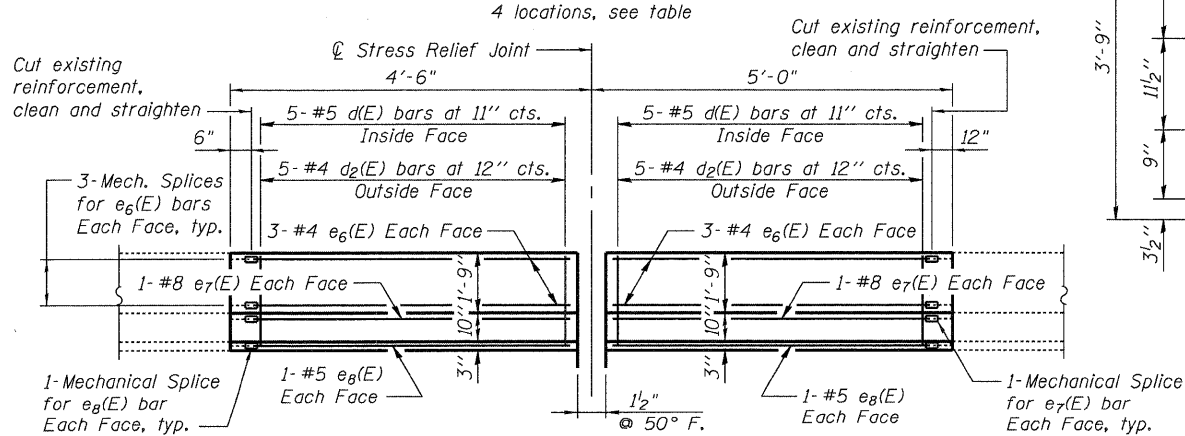


Note:
For additional parapet removal to facilitate light standard replacement, see Sheet No. 28 of 33.



PARTIAL DECK PLAN AT STRESS RELIEF JOINT

4 locations, see table



INSIDE ELEVATION OF PARAPET

Note:
Remove and replace conduit runs in parapet. Cost included with Concrete Superstructure.

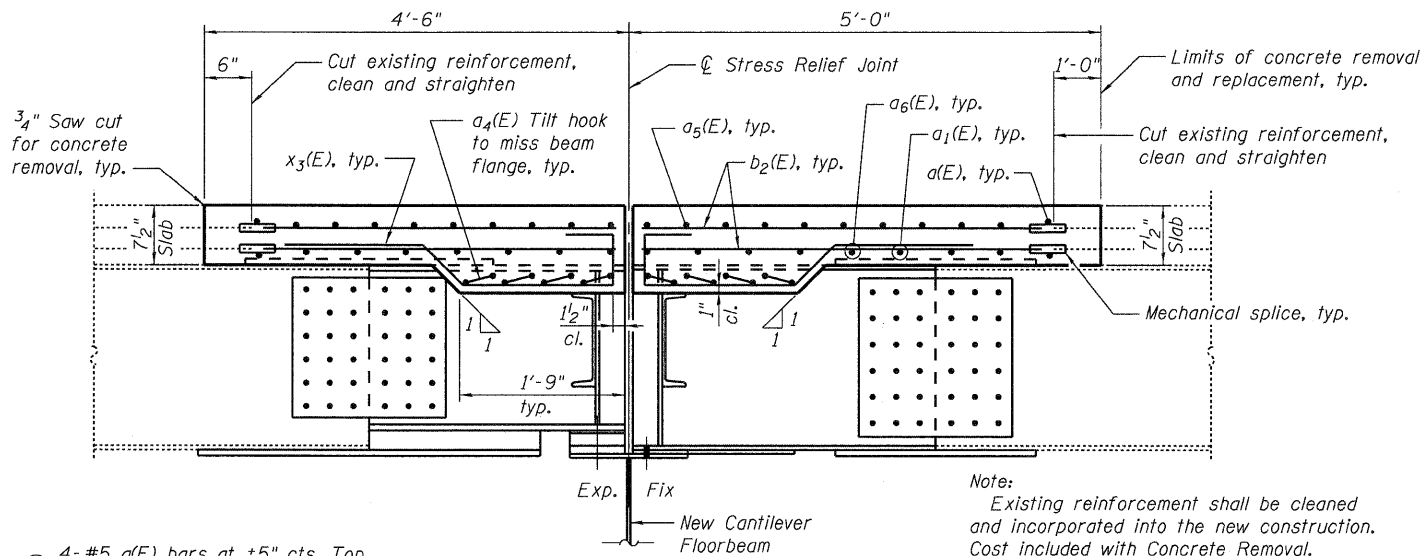
TABLE OF LOCATIONS

SPAN	FLRBM. NO.
9	FB4
19	FB3
22	FB3
	FB6

Note: For floorbeam locations, see Sheet Nos. 6 and 7 of 33.

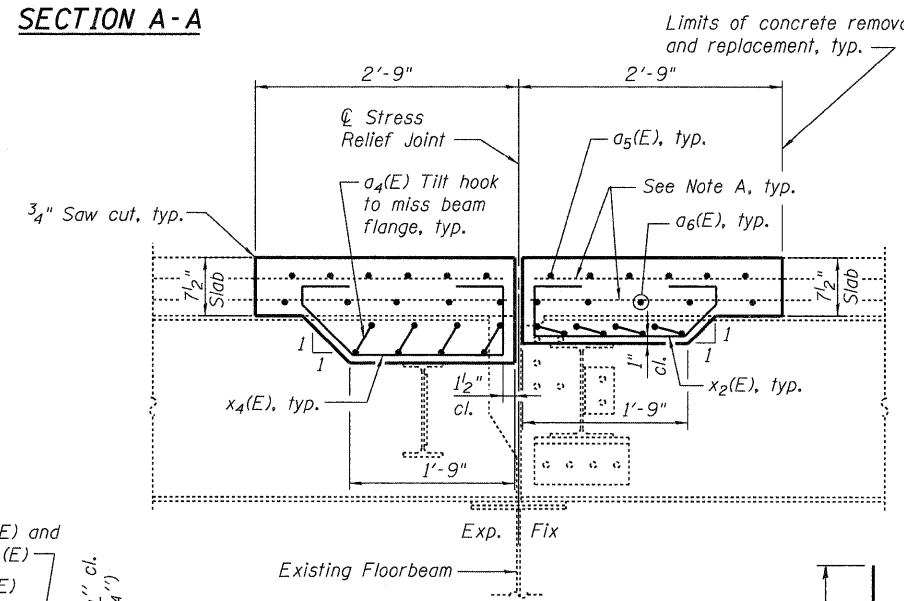
**STATE OF ILLINOIS
DEPARTMENT OF TRANSPORTATION**

Note:
For details of preformed joint strip seal, see No. sheet 30 of 33.



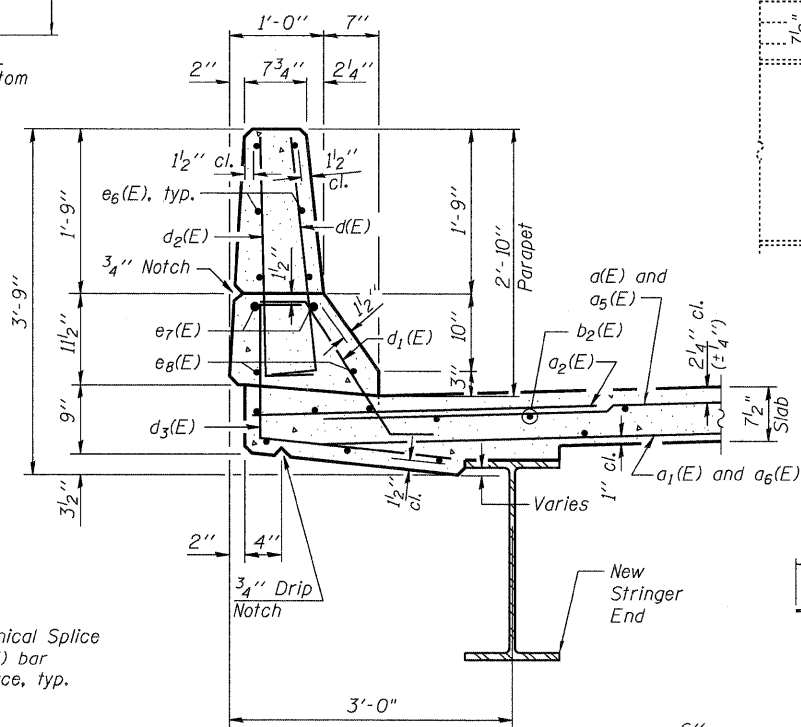
SECTION A-A

- (A) 4-#5 a(E) bars at ±5" cts. Top
3-#5 a1(E) bars at ±6 1/2" cts. Bottom
- (B) 5-#5 a(E) bars at ±5" cts. Top
4-#5 a1(E) bars at ±6 1/2" cts. Bottom
- (C) 4-Mechanical Splices for a(E) bars - Top
3-Mechanical Splices for a1(E) bars - Bottom
- (D) 5-Mechanical Splices for a(E) bars - Top
4-Mechanical Splices for a1(E) bars - Bottom

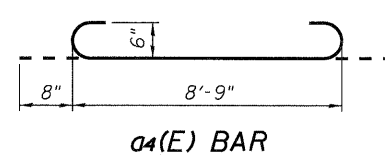


SECTION B-B

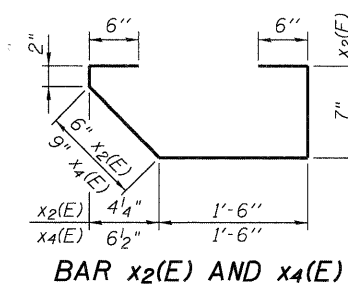
Note A:
Existing longitudinal slab reinforcement to remain in place, clean, straighten and incorporate into repair



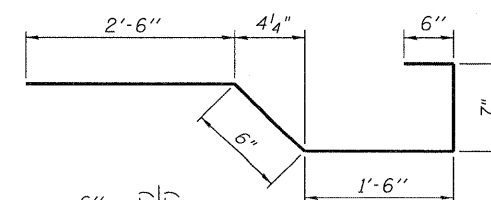
SECTION THRU PARAPET



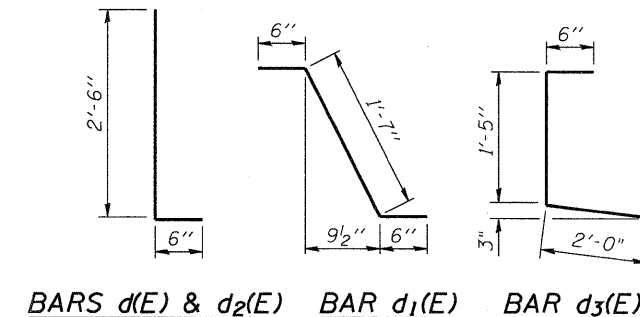
a4(E) BAR



BAR x2(E) AND x4(E)



BAR x3(E)



BARS d(E) & d2(E) BAR d1(E) BAR d3(E)

**PARTIAL DECK REMOVAL AND
REPLACEMENT AT RELIEF JOINTS - 2
I-80 OVER
MISSISSIPPI RIVER
STRUCTURE NO. 081-0011**

**SUPERSTRUCTURE
BILL OF MATERIAL**

Bar	No.	Size	Length	Shape
* d(E)	88	#5	21'-3"	—
** a1(E)	72	#5	20'-6"	—
a2(E)	80	#6	6'-0"	—
a4(E)	192	#6	10'-1"	—
*** a5(E)	112	#5	31'-1"	—
**** a6(E)	96	#5	30'-4"	—
b2(E)	800	#5	3'-8"	—
d(E)	80	#5	3'-0"	—
d1(E)	80	#5	2'-7"	—
d2(E)	80	#4	3'-0"	—
d3(E)	80	#4	3'-11"	—
e6(E)	96	#4	3'-8"	—
e7(E)	32	#8	3'-8"	—
e8(E)	32	#5	3'-8"	—
x2(E)	72	#5	3'-9"	—
x3(E)	288	#5	5'-7"	—
x4(E)	72	#5	4'-2"	—
Reinforcement Bars, Epoxy Coated	Pound		20,630	
Concrete Removal	Cu. Yd.		57.7	
Concrete Superstructure	Cu. Yd.		70.1	
Mechanical Splice	Each		1328	

Notes:
Reinforcement bars designated (E) shall be epoxy coated.
* 2 additional bars included, per set of 9, to make up for possible shortage.
** 2 additional bars included, per set of 7, to make up for possible shortage.
*** 1 additional bar included per set of 6, to make up for possible shortage.
**** 1 additional bar included per set of 5, to make up for possible shortage.

DESIGNED	YSS
CHECKED	DWP
DRAWN	PRC
CHECKED	YSS



09/17/09

SHEET NO.	F.A.I. RTE.	SECTION	COUNTY	TOTAL SHEETS	SHEET NO.
26	80	(81-1B)M-4	ROCK ISLAND	75	53
33 SHEETS		SN 081-0011			CONTRACT NO. 64F31
FED. ROAD DIST. NO. 7 ILLINOIS FED. AID PROJECT					