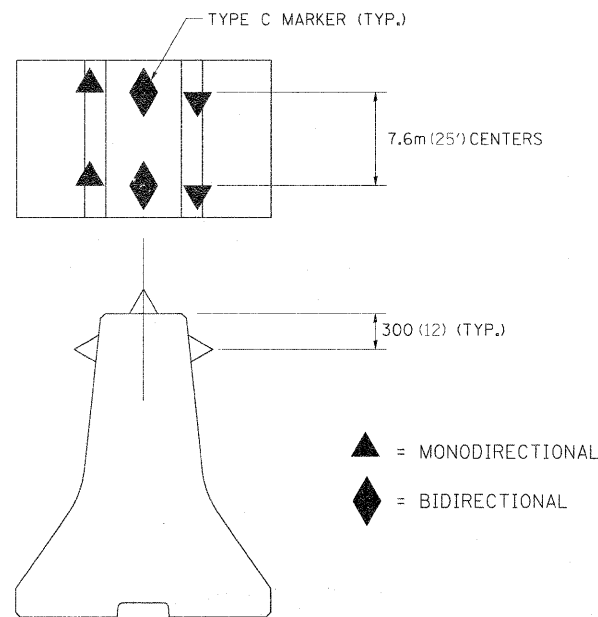


# DELINEATION OF CENTER BARRIER OF TWO-LANE TWO WAY OPERATION



### DESIGNER NOTE:

Use this with Traffic Control and Protection Standard 701416 when using concrete barrier vs. flexible delineators as the barrier on centerline.

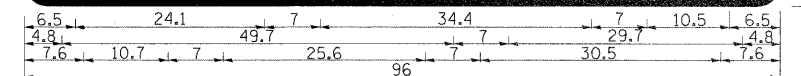
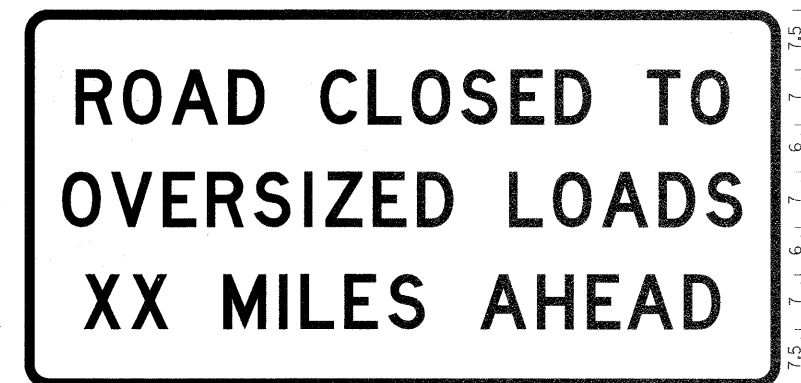
### NOTES

1. All reflectors are to be amber in color and meet the specifications of Section 1097 of the Standard Specifications for Road and Bridge Construction.
2. All reflectors are to be installed in accordance with Section 782 of the Standard Specifications for Road and Bridge Construction.
3. On Interstates do not use the panels mounted on top of the barriers as shown on Standard 701416.
4. The cost of the reflectors will be included in the contract unit price per meter (foot) for Temporary Concrete Barrier.
5. ALL DIMENSIONS ARE IN MILLIMETERS (INCHES) UNLESS OTHERWISE NOTED.

REVISED - 1-08-08

DELINEATION OF CENTER BARRIER OF TWO-LANE TWO WAY OPERATION 25.4

# ROAD CLOSED TO OVERSIZED LOADS



Permit Loads - Loads Over 13 Feet; 3.0" Radius, 1.3" Border, Black on Orange; [ROAD CLOSED TO] D; [OVERSIZED LOADS] D; [XX MILES AHEAD] D; Table of letter and object lefts.

R	O	A	D	C	L	O	S	E	D	T	O		
6.5	12.5	18.7	25.9	37.6	43.6	49.2	55.4	61.8	67.3	79.0	84.6		
O	V	E	R	S	I	Z	E	D	L	O	A	D	S
4.8	11.0	17.6	23.1	29.2	35.5	38.2	44.3	49.8	61.5	67.1	73.3	80.5	86.5
X	X	M	I	L	E	S	A	H	E	A	D		
7.6	13.6	25.3	32.3	35.1	40.6	46.2	57.9	66.1	71.4	76.8	83.7		

All work to furnish and install these signs shall be included in the cost of the Traffic Control Standards and shall not be paid for separately.

ALL DIMENSIONS ARE IN INCHES UNLESS OTHERWISE NOTED.

REVISED - 1-9-08

ROAD CLOSED TO OVERSIZED LOADS 40.4

# TYPICAL MEDIAN CROSSOVER CLOSURE (WITH EMERGENCY OPENING)

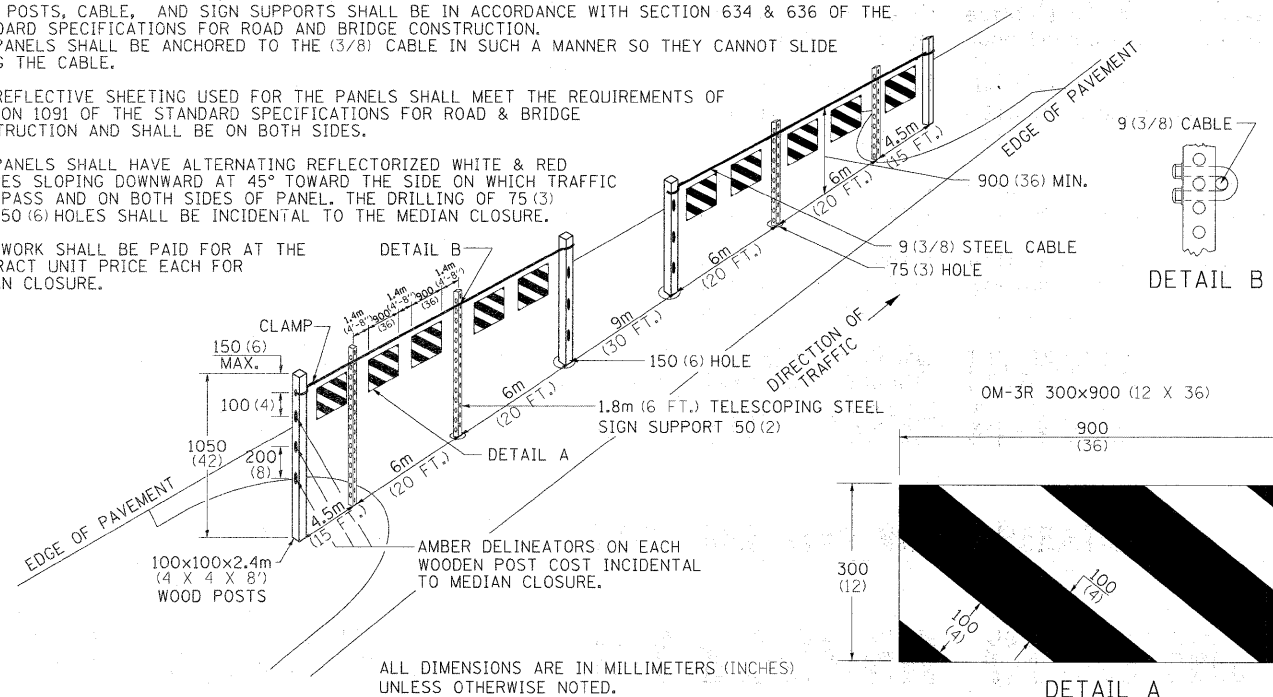
### GENERAL NOTES

WOOD POSTS, CABLE, AND SIGN SUPPORTS SHALL BE IN ACCORDANCE WITH SECTION 634 & 636 OF THE STANDARD SPECIFICATIONS FOR ROAD AND BRIDGE CONSTRUCTION. THE PANELS SHALL BE ANCHORED TO THE (3/8) CABLE IN SUCH A MANNER SO THEY CANNOT SLIDE ALONG THE CABLE.

THE REFLECTIVE SHEETING USED FOR THE PANELS SHALL MEET THE REQUIREMENTS OF SECTION 1091 OF THE STANDARD SPECIFICATIONS FOR ROAD & BRIDGE CONSTRUCTION AND SHALL BE ON BOTH SIDES.

ALL PANELS SHALL HAVE ALTERNATING REFLECTORIZED WHITE & RED STRIPES SLOPING DOWNWARD AT 45° TOWARD THE SIDE ON WHICH TRAFFIC WILL PASS AND ON BOTH SIDES OF PANEL. THE DRILLING OF 75 (3) AND 150 (6) HOLES SHALL BE INCIDENTAL TO THE MEDIAN CLOSURE.

THIS WORK SHALL BE PAID FOR AT THE CONTRACT UNIT PRICE EACH FOR MEDIAN CLOSURE.



REVISED - 1-24-07

TYPICAL MEDIAN CROSSOVER CLOSURE (WITH EMERGENCY OPENING) 87.4

REVISED -	<b>REGION 2 / DISTRICT 2 STANDARD</b>	F.A.I. RTE.	SECTION	COUNTY	TOTAL SHEETS	SHEET NO.
REVISED -		80	(81-1B) M-4	ROCK ISLAND	75	68
REVISED -		CONTRACT NO. 64F31				
REVISED -		SCALE: 50:2000 1" = 100'	SHEET NO. OF SHEETS STA. TO STA.		FED. ROAD DIST. NO. ILLINOIS FED. AID PROJECT	

PLOT DATE = Thu Sep 17 09:56:51 2009