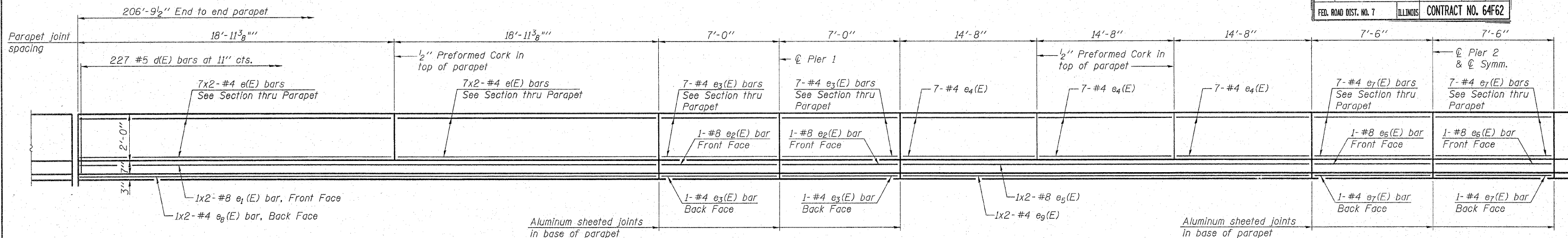
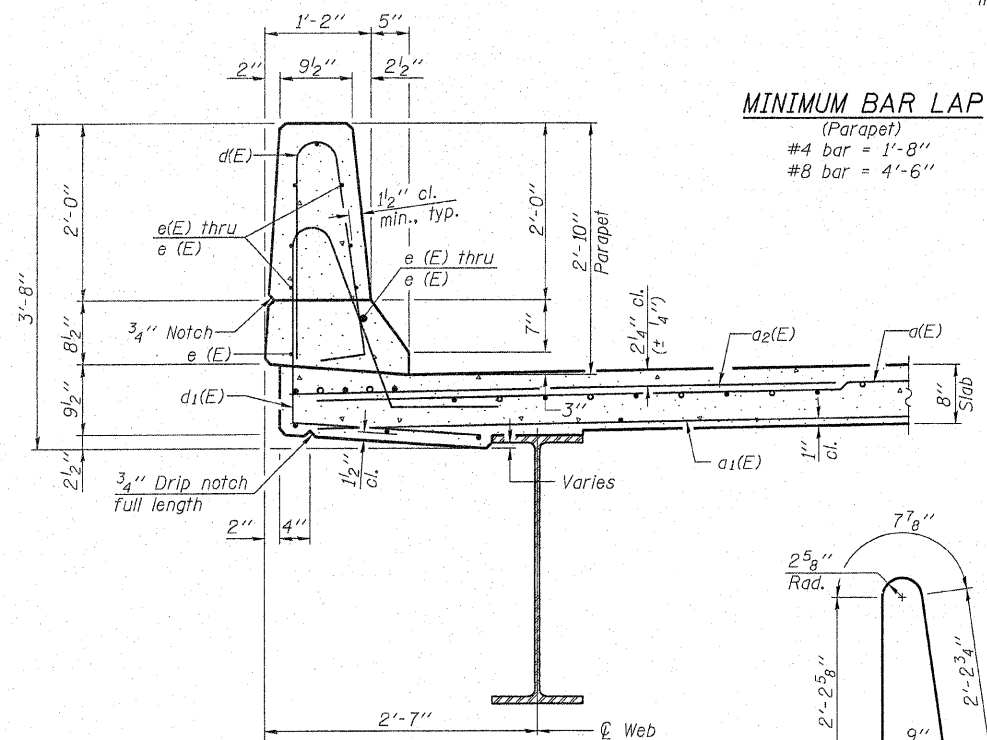


STATE OF ILLINOIS
DEPARTMENT OF TRANSPORTATION

| | | | | | |
|-----------------------|----------|--------------------|--------------|-----------|--------------------------|
| F.A.P. RTE. | SECTION | COUNTY | TOTAL SHEETS | SHEET NO. | SHEET NO. 9 27 SHEETS |
| 301 | 1-HBR-2F | WINNEBAGO | 29 | 11 | |
| FED. ROAD DIST. NO. 7 | ILLINOIS | CONTRACT NO. 64F62 | | | |

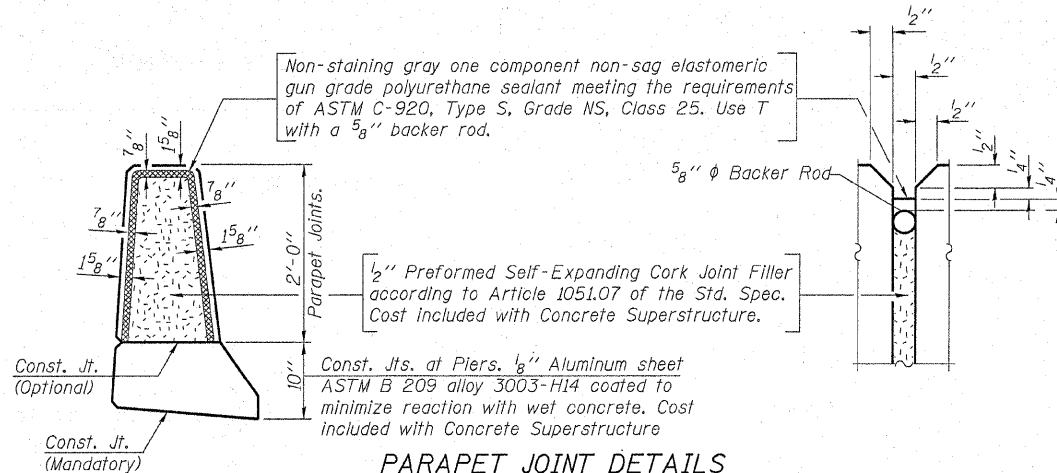


INSIDE ELEVATION OF PARAPET
(SYMMETRICAL @ PIER 2)



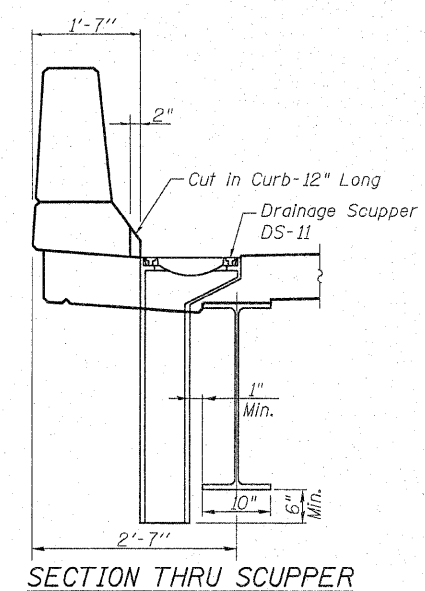
SECTION THRU PARAPET

MINIMUM BAR LAP
(Parapet)
#4 bar = 1'-8"
#8 bar = 4'-6"



PARAPET JOINT DETAILS

Notes:
Drains shall be located clear of all diaphragms.
The exterior surfaces of the floor drains shall be painted with the finish coat as specified in the special provisions for Cleaning and Painting New Metal Structures. The exterior surfaces of the drains shall be cleaned according to Society of Protective Coatings Spec. SSPC-SP1 prior to painting.
Fiberglass pipe shall conform to ASTM D 2996, with short-time rupture strength hoop tensile stress of 30,000 p.s.i. minimum.



SECTION THRU SCUPPER

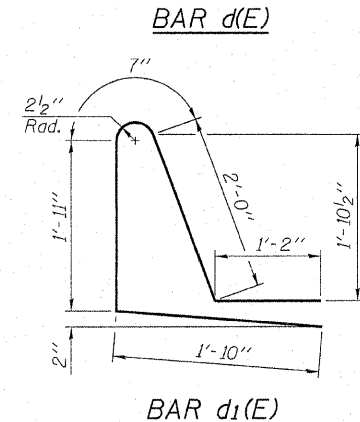
**SUPERSTRUCTURE
BILL OF MATERIAL**

| Bar | No. | Size | Length | Shape |
|----------------------------------|-----|----------|--------|-------|
| a(E) | 382 | #5 | 34'-7" | — |
| a1(E) | 249 | #5 | 34'-0" | — |
| a2(E) | 764 | #6 | 6'-0" | — |
| a3(E) | 40 | #6 | 7'-3" | — |
| a4(E) | 2 | #5 | 26'-2" | — |
| a5(E) | 8 | #6 | 36'-0" | — |
| a6(E) | 16 | #5 | 1'-6" | — |
| b(E) | 266 | #5 | 31'-5" | — |
| b1(E) | 72 | #6 | 31'-0" | — |
| b2(E) | 288 | #5 | 27'-9" | — |
| b3(E) | 36 | #6 | 33'-4" | — |
| d(E) | 454 | #5 | 5'-7" | — |
| d1(E) | 454 | #5 | 7'-6" | — |
| e(E) | 112 | #4 | 10'-2" | — |
| e1(E) | 8 | #8 | 21'-1" | — |
| e2(E) | 8 | #8 | 6'-8" | — |
| e3(E) | 64 | #4 | 6'-8" | — |
| e4(E) | 84 | #4 | 14'-4" | — |
| e5(E) | 8 | #8 | 24'-1" | — |
| e6(E) | 4 | #8 | 7'-2" | — |
| e7(E) | 32 | #4 | 7'-2" | — |
| e8(E) | 8 | #4 | 19'-8" | — |
| e9(E) | 8 | #4 | 22'-8" | — |
| x(E) | 70 | #5 | 6'-5" | — |
| Reinforcement Bars, Epoxy Coated | | Pound | 62,750 | |
| Concrete Superstructure | | Cu. Yds. | 246 | |

Bars indicated thus 1x2-#8 etc. indicates 1 line of bars with 2 lengths per line.
FOR INFORMATION ONLY
DECK SECTION & DETAILS
MERIDIAN ROAD OVER US 20
F.A.P. 301 (US 20) - SEC. 1-HBR-2F
WINNEBAGO COUNTY
STATION 100+00
STRUCTURE NO. 101-0096

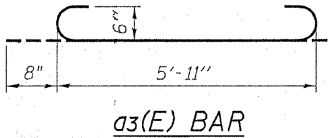
| | |
|----------|-----------|
| DESIGNED | GUN / OAO |
| CHECKED | FCO |
| DRAWN | TCS / GUN |
| CHECKED | FCO |

BAR x(E)

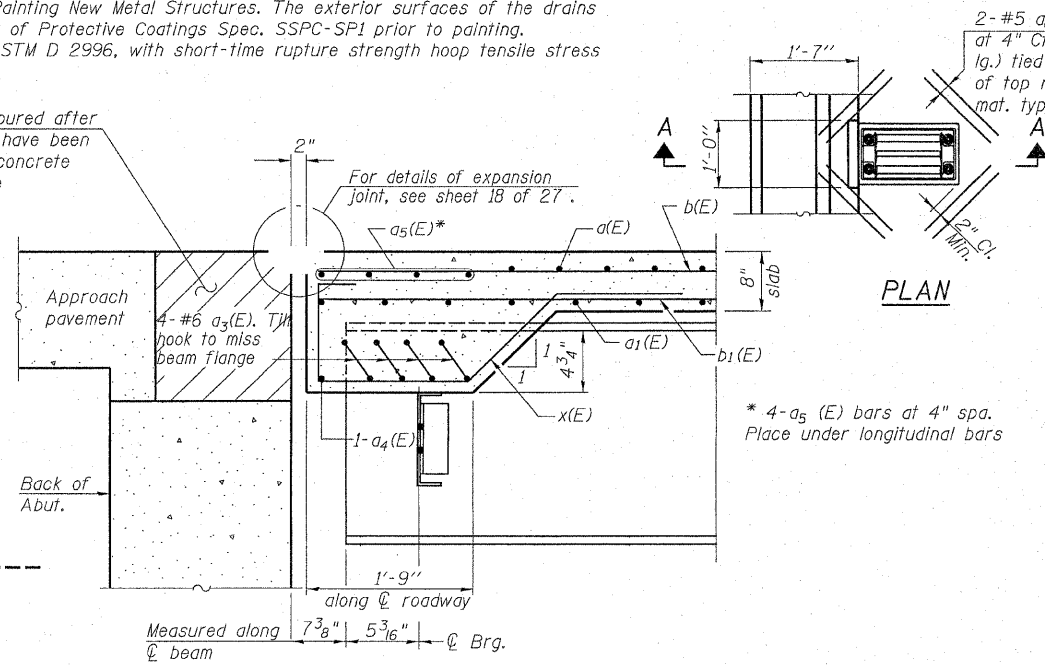


BAR d(E)

BAR d1(E)



a3(E) BAR



SECTION A-A
(Between Beams Only)

HOH HARRY O. HEFFER ASSOCIATES, INC.
55 East Jackson Blvd. Suite 400
Chicago, IL 60604
312-246-9131
PROJECT NUMBER 2945

12:07:07 PM 7/22/2009 I:\proj\jeff\2945\DNS\Structural\Meridian Road\Draws From SD\0611 Files\Final Drawings\2009\10100096-64D50-009-DECKSECTION&DETAILS.dgn