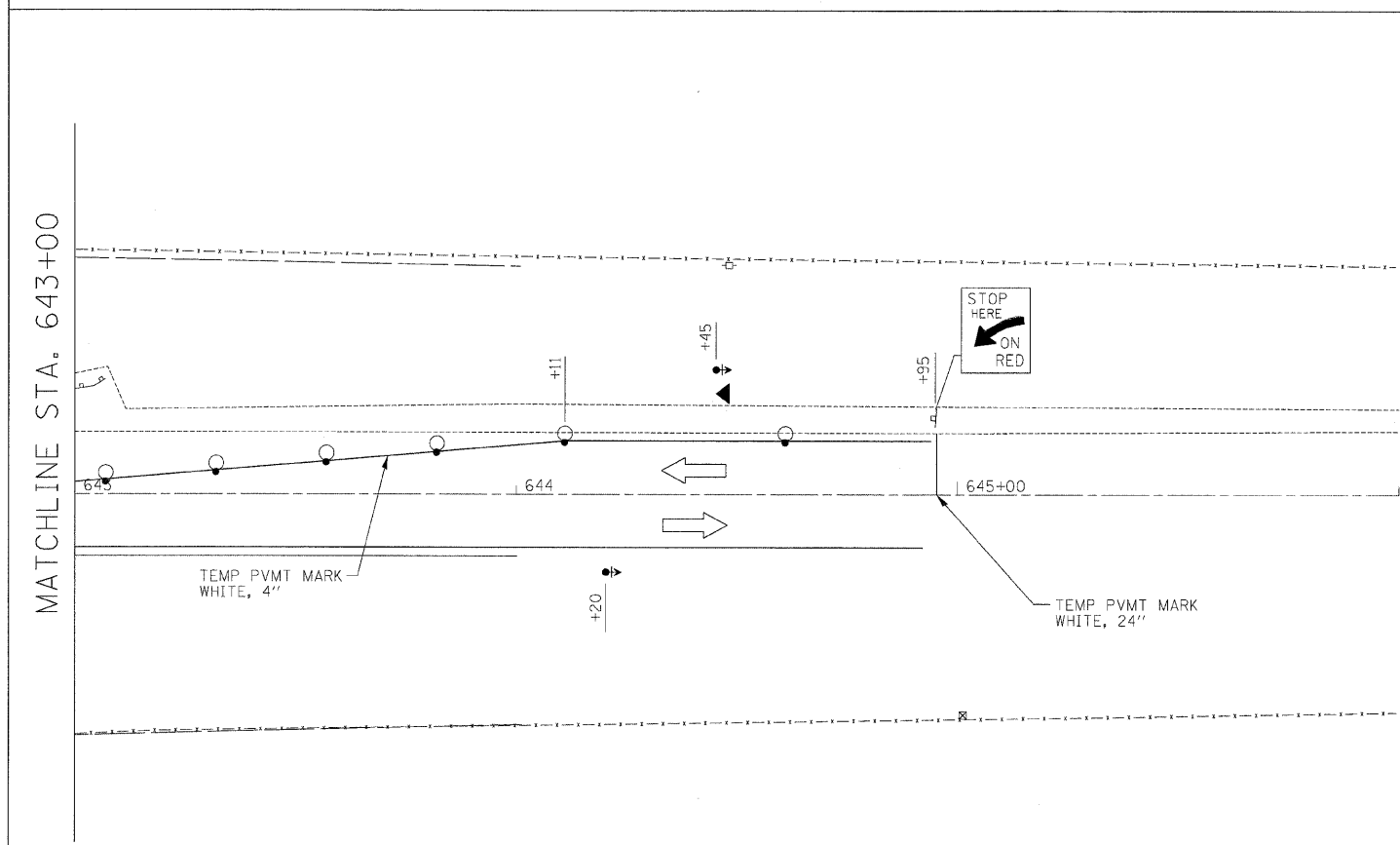


STAGE II CONSTRUCTION



STAGE II CONSTRUCTION

NOTE 1:
 TEMPORARY PAVEMENT (LEVELING BINDER) CONSTRUCTED
 IN STAGE II PRECONSTRUCTION TO PROVIDE TRANSITION
 FROM EXISTING TO PROPOSED PAVEMENT

SEQUENCE OF CONSTRUCTION

STAGE II PRECONSTRUCTION
 CONSTRUCT TEMPORARY TRANSITION PAVEMENT USING TRAFFIC CONTROL
 AND PROTECTION STANDARD 701326.

STAGE II CONSTRUCTION
 CONSTRUCT HMA PAVEMENT, PROPOSED GUARDRAIL AND THE STAGE II PORTION
 OF THE PROPOSED CULVERT (SEE STRUCTURE PLANS) IN THE SOUTHBOUND LANES
 USING TRAFFIC CONTROL AND PROTECTION STANDARD 701321.

LEGEND

- WORK AREA
- SIGN
- TYPE III BARRICADE
- TRAFFIC SIGNAL WITH BACKPLATE
- MICROWAVE DETECTOR
- IMPACT ATTENUATOR
- DRUM WITH STEADY BURNING LIGHT
- TEMPORARY CONCRETE BARRIER

FILE NAME = ...N0366741-SHT-Stage Const Sheets.dgn	USER NAME = SAW	DESIGNED - RAC	REVISED -
		DRAWN - SAW	REVISED -
	PLOT SCALE = 20,0000' / IN.	CHECKED - RAC	REVISED -
	PLOT DATE = 7/14/2009	DATE - 07/17/09	REVISED -

**STATE OF ILLINOIS
 DEPARTMENT OF TRANSPORTATION**

ILLINOIS ROUTE 71
 STAGE CONSTRUCTION TRAFFIC CONTROL

SCALE: SHEET NO. OF SHEETS STA. 638+50 TO STA. 756+50

F.A.P. RTE.	SECTION	COUNTY	TOTAL SHEETS	SHEET NO.
311	(3)BR- 1, 2, & (4)BR	LASALLE	66	16
FED. ROAD DIST. NO. ILLINOIS FED. AID PROJECT			CONTRACT NO. 66741	