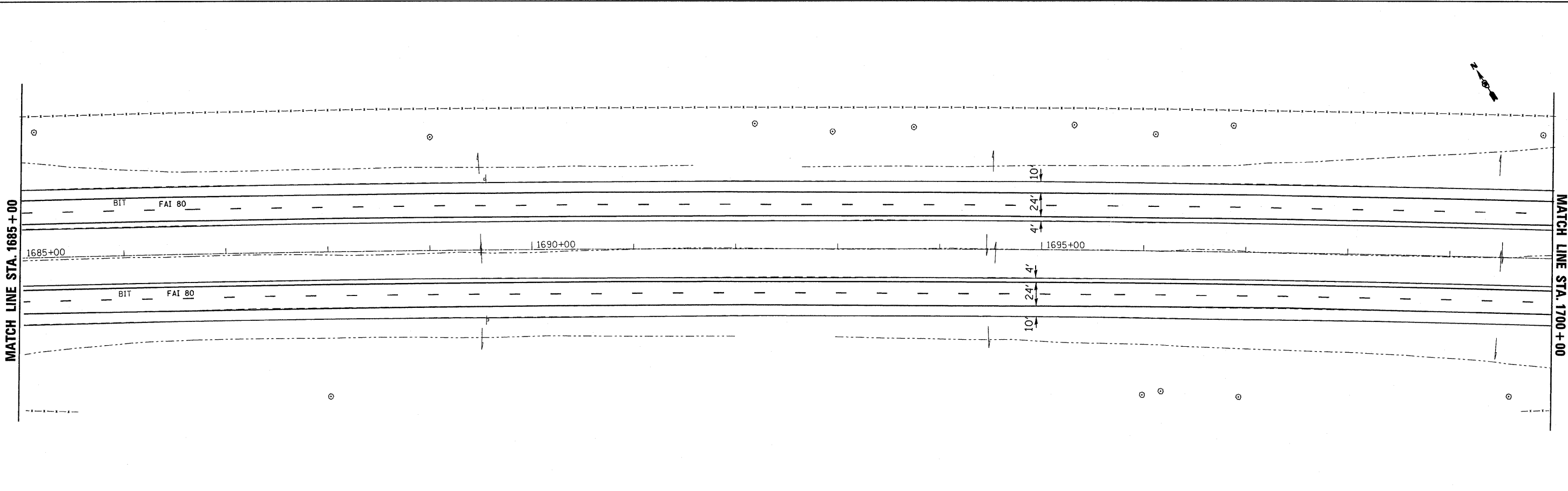
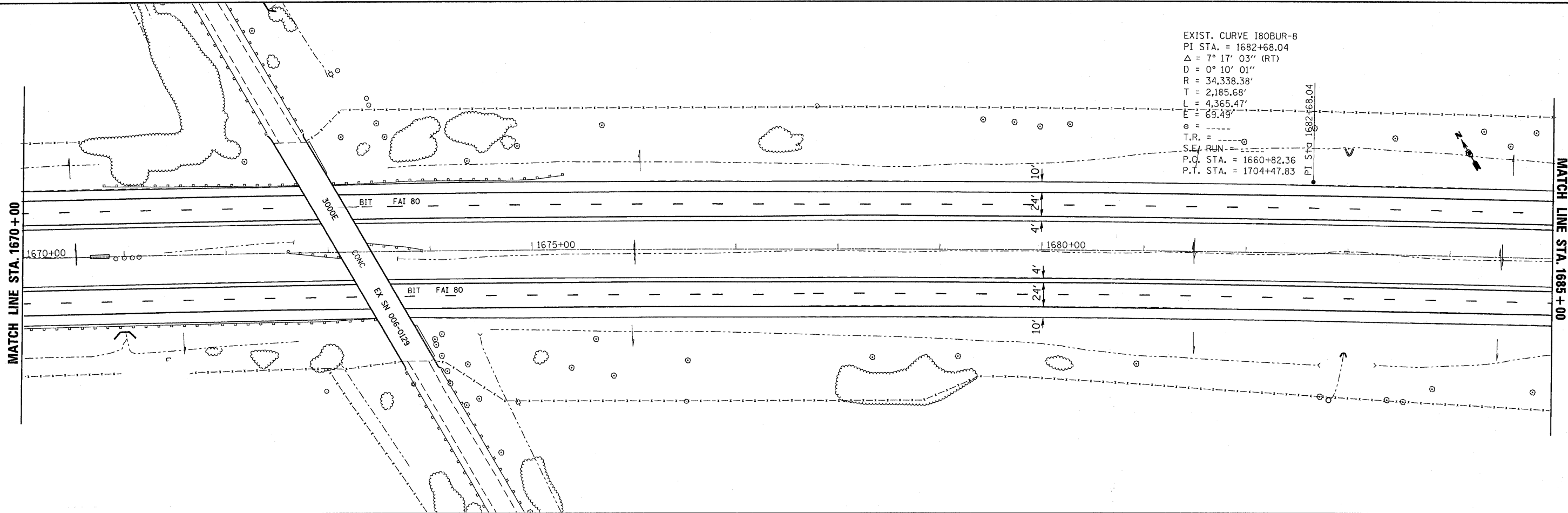


EXIST. CURVE I80BUR-8
 PI STA. = 1682+68.04
 $\Delta = 7^\circ 17' 03''$ (RT)
 $D = 0^\circ 10' 01''$
 $R = 34,338.38'$
 $T = 2,185.68'$
 $L = 4,365.47'$
 $E = 69.49'$
 T.P. =
 S.E. RUN =
 P.O. STA. = 1660+82.36
 P.T. STA. = 1704+47.83

PI STA 1682+68.04



FILE NAME =	USER NAME = braboygo	DESIGNED -	REVISED -
c:\pwwork\pwwork\braboygo\d0112640\d368908-sht-plan.dgn		DRAWN -	REVISED -
	PLOT SCALE = 50.0000' / IN.	CHECKED -	REVISED -
	PLOT DATE = Sep 07, 2009 - 01:24:59 PM	DATE -	REVISED -

STATE OF ILLINOIS
 DEPARTMENT OF TRANSPORTATION

PLANS SHEETS STA 1670+00 TO STA 1700+00

SCALE: _____ SHEET NO. ___ OF ___ SHEETS STA. _____ TO STA. _____

**06-[7BR&BR-1,7VB-M,6BR&6,7 RS-1 & I]

F.A. RTE.	SECTION	COUNTY	TOTAL SHEETS	SHEET NO.
I-80	**	BUREAU	344	40
CONTRACT NO. 66908			ILLINOIS FED. AID PROJECT	