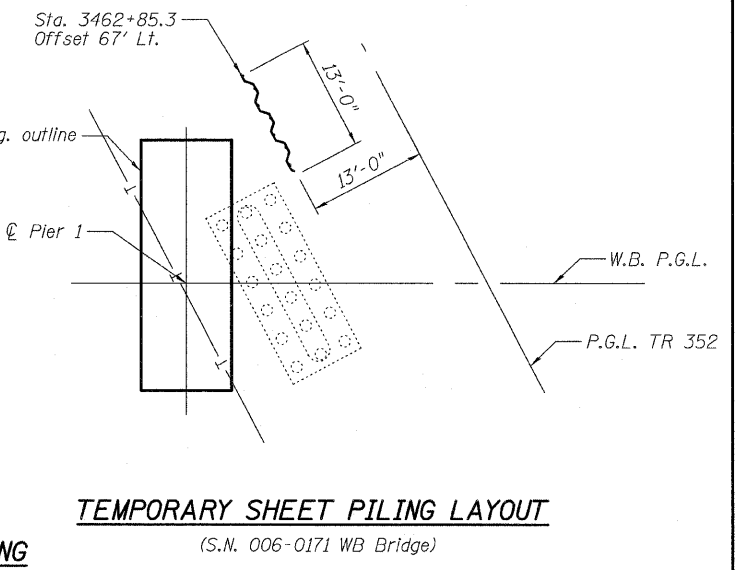
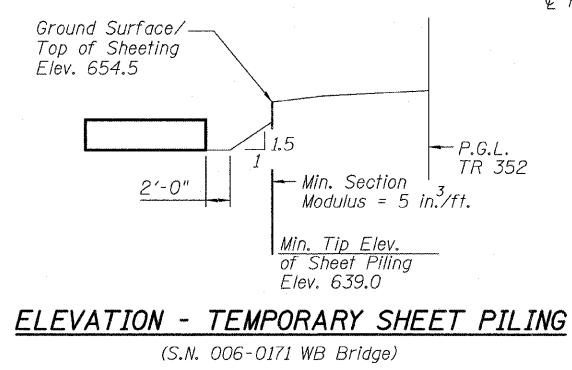
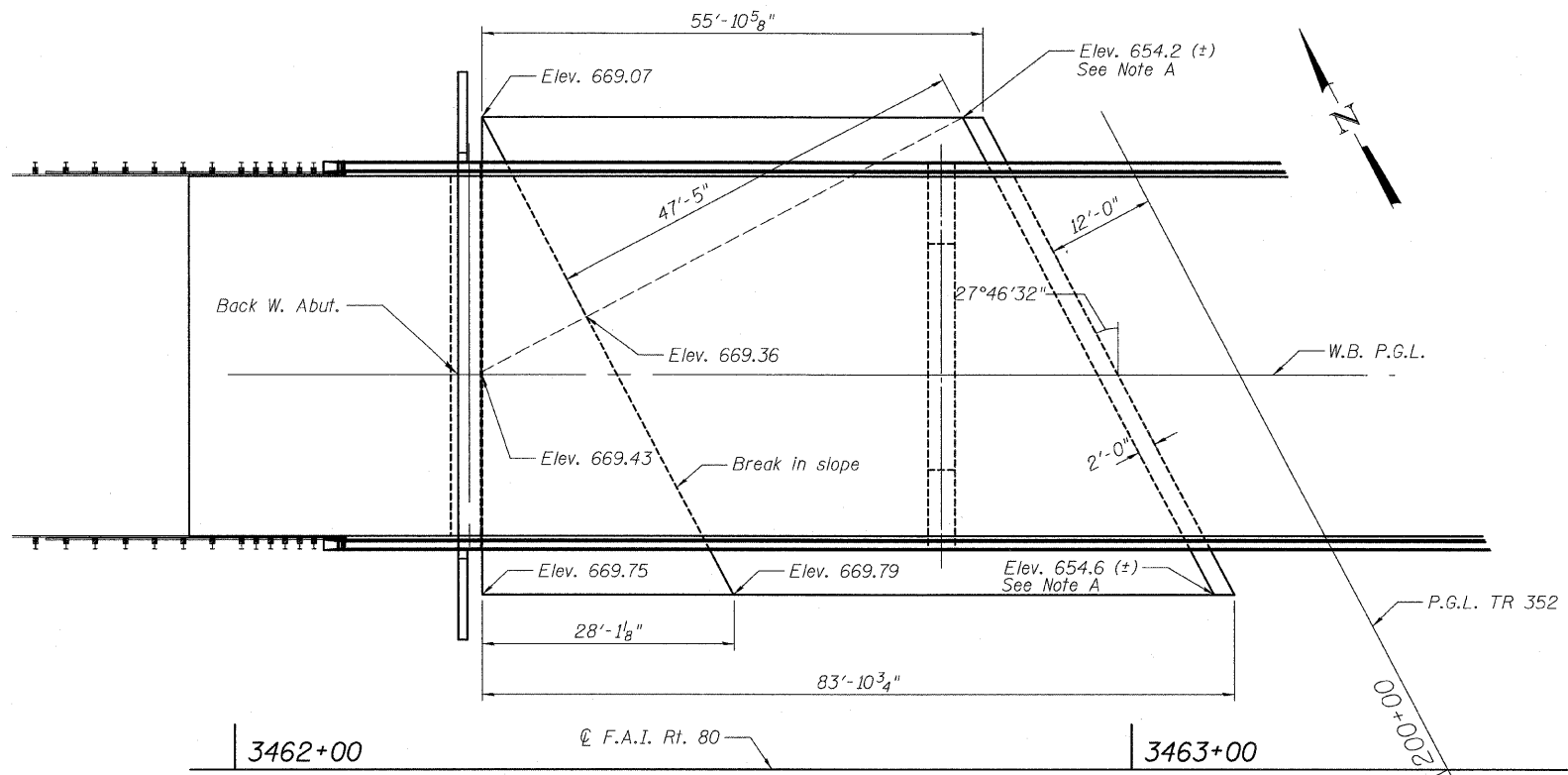
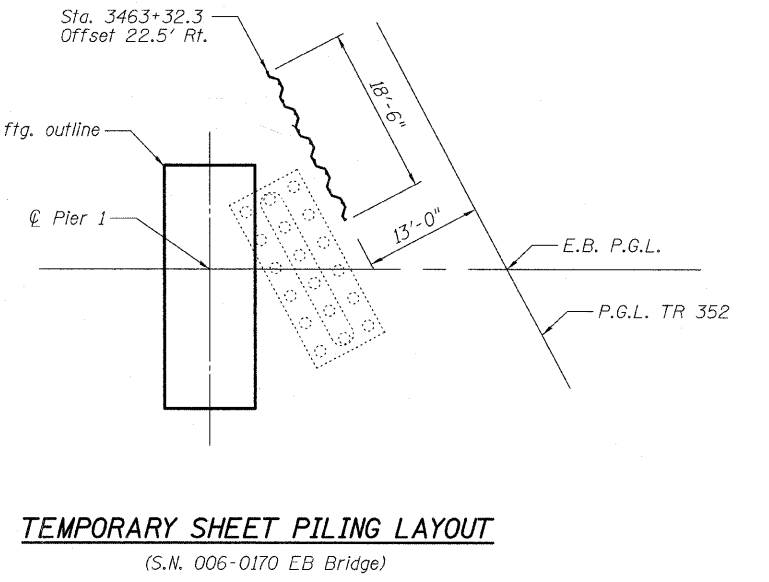
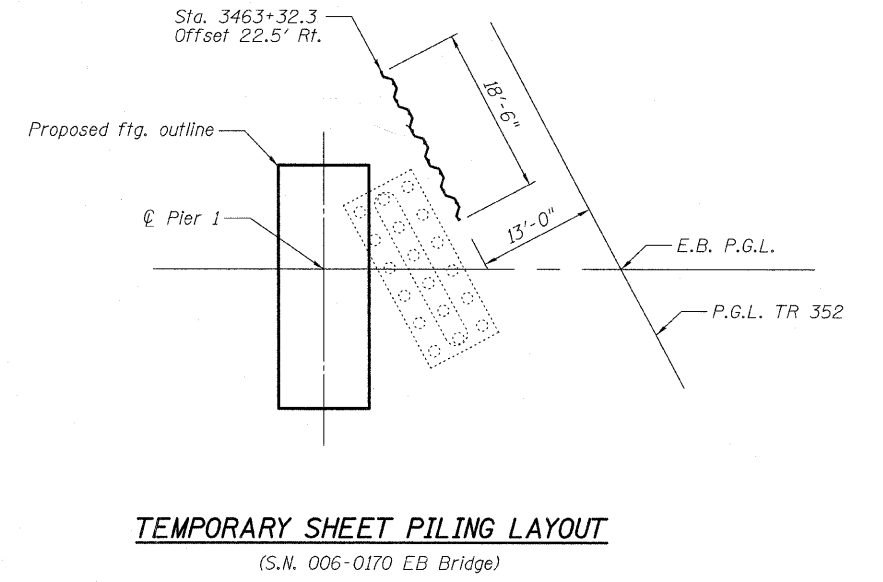
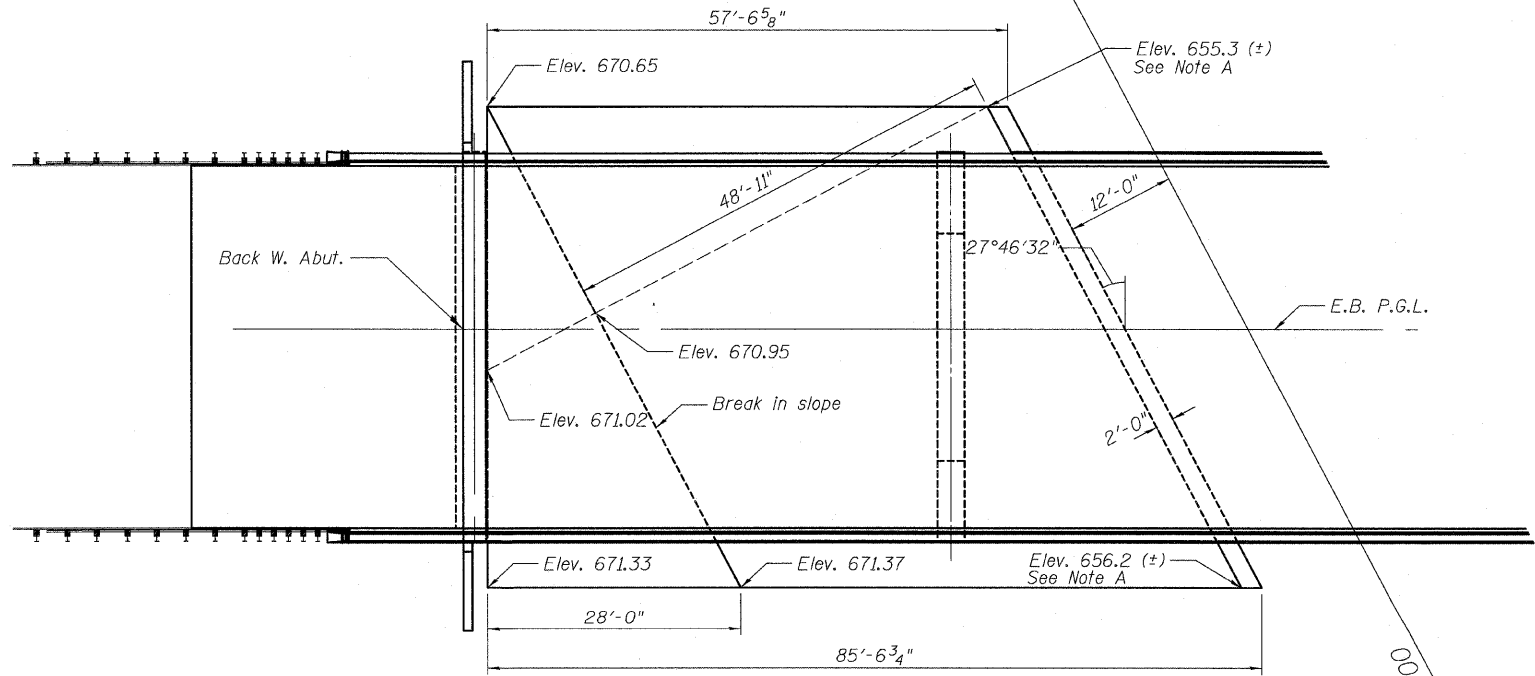


STATE OF ILLINOIS
DEPARTMENT OF TRANSPORTATION



Note A:
Existing ditch elevation taken from existing plans. Contractor shall modify sloped wall to fit actual field conditions.



DESIGNED	- SP
CHECKED	- PDF
DRAWN	- SP
CHECKED	- PDF

TEMPORARY SHEET PILING NOTES
If the Contractor chooses to alter the temporary cantilevered sheet piling design requirements shown on the plans, a design submittal including plan details and calculations will be required for review and acceptance by the Engineer.

CONCRETE SLOPEWALL LAYOUT PLAN
(See Sheet 2 of 59 for cross section)

MISCELLANEOUS DETAILS
STRUCTURE NO. 006-0170 EB
STRUCTURE NO. 006-0171 WB

SHEET NO.	F.A. RTE.	SECTION	COUNTY	TOTAL SHEETS	SHEET NO.
3	80	*	BUREAU	244	97
59 SHEETS					
FED. ROAD DIST. NO.		ILLINOIS FED. AID PROJECT			
CONTRACT NO. 66908					

TYLIN INTERNATIONAL