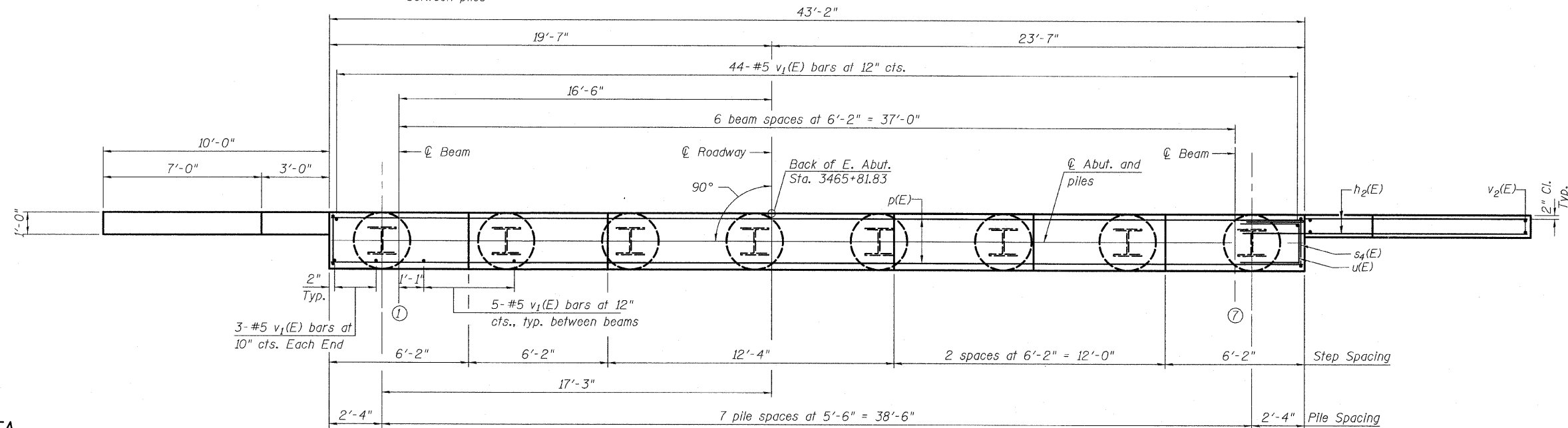
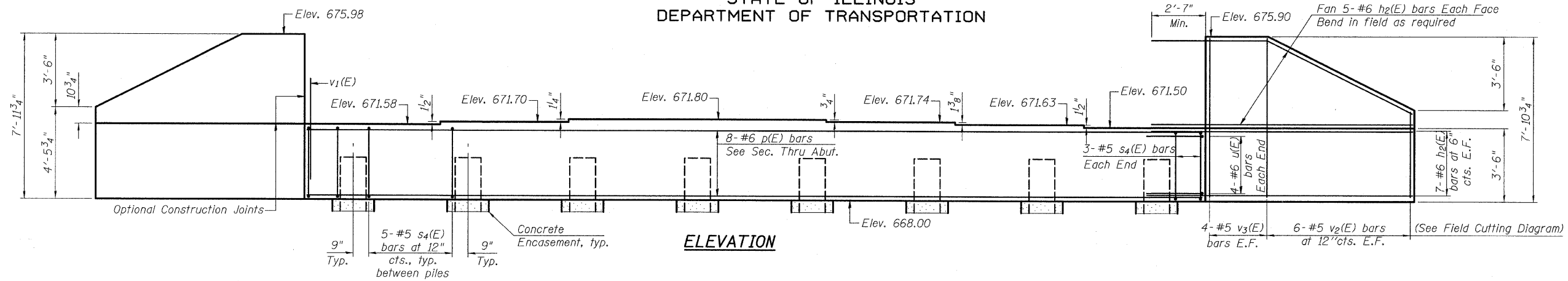


STATE OF ILLINOIS  
DEPARTMENT OF TRANSPORTATION



**LAP SPLICES**

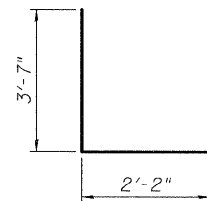
Bar	Lap
#4	1'-8"
#5	2'-2"
#6	2'-7"
#7	3'-5"
#8	4'-6"

**PILE DATA**

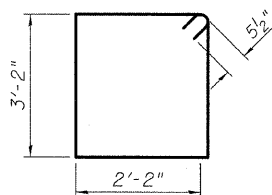
Type: Steel HP14x73  
 Nominal Required Bearing: 300 kips  
 Factored Resistance Available: 150 kips  
 Est. Length: 30 ft.  
 No. Production Piles: 7 Piles  
 No. Test Piles: 1 Pile

**NOTES:**

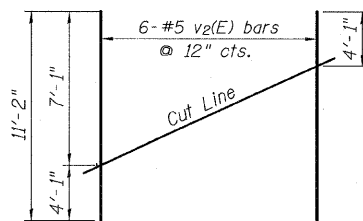
1. Pour steps monolithically with cap.
2. For details of piles and Concrete Encasement, see sheet 53 of 59.



**BAR u(E)**



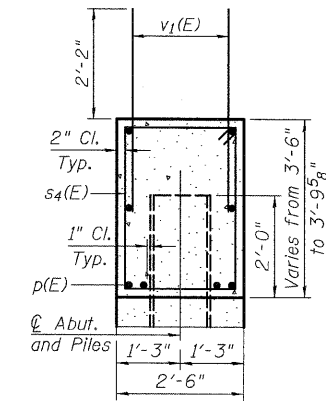
**BAR s<sub>4</sub>(E)**



**FIELD CUTTING DIAGRAM**

**BILL OF MATERIAL**

Bar	No.	Size	Length	Shape
h <sub>2</sub> (E)	48	#6	13'-3"	—
p(E)	8	#6	42'-10"	—
s <sub>4</sub> (E)	41	#5	11'-7"	□
u(E)	8	#6	9'-4"	—
v <sub>1</sub> (E)	80	#5	4'-4"	—
v <sub>2</sub> (E)	12	#5	11'-2"	—
v <sub>3</sub> (E)	16	#5	7'-7"	—
Structure Excavation	Cu. Yd.	51.8		
Concrete Structures	Cu. Yd.	19.7		
Reinforcement Bars, Epoxy Coated	Pound	2710		
Furnishing Steel Piles, HP 14x73	Foot	210		
Driving Piles	Foot	210		
Test Pile, HP 14x73	Each	1		
Concrete Encasement	Cu. Yd.	4.4		



**SEC. THRU ABUT.**

**EAST ABUTMENT  
STRUCTURE NO. 006-0170 EB**

**LEGEND**

E.F. - Denotes Each Face.

DESIGNED	- PK
CHECKED	- PDF
DRAWN	- PK
CHECKED	- PDF

SHEET NO.	F.A. RTE.	SECTION	COUNTY	TOTAL SHEETS	SHEET NO.
40	80	*	BUREAU	344	174
59 SHEETS					
FED. ROAD DIST. NO.			ILLINOIS FED. AID PROJECT		
CONTRACT NO. 66908					

TYLIN INTERNATIONAL