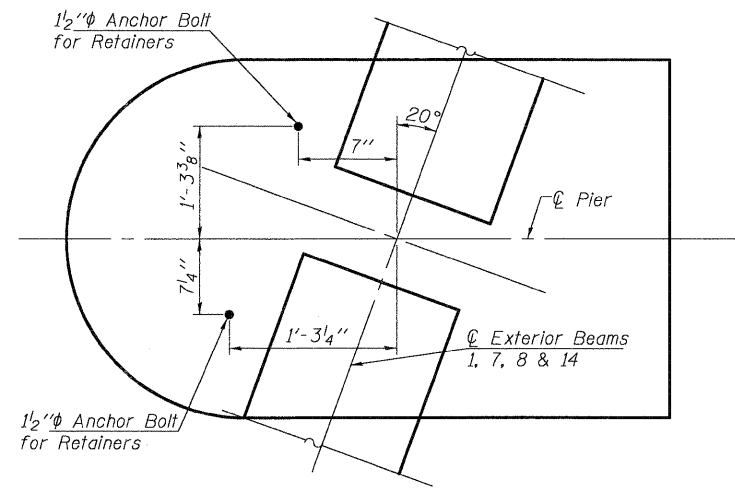
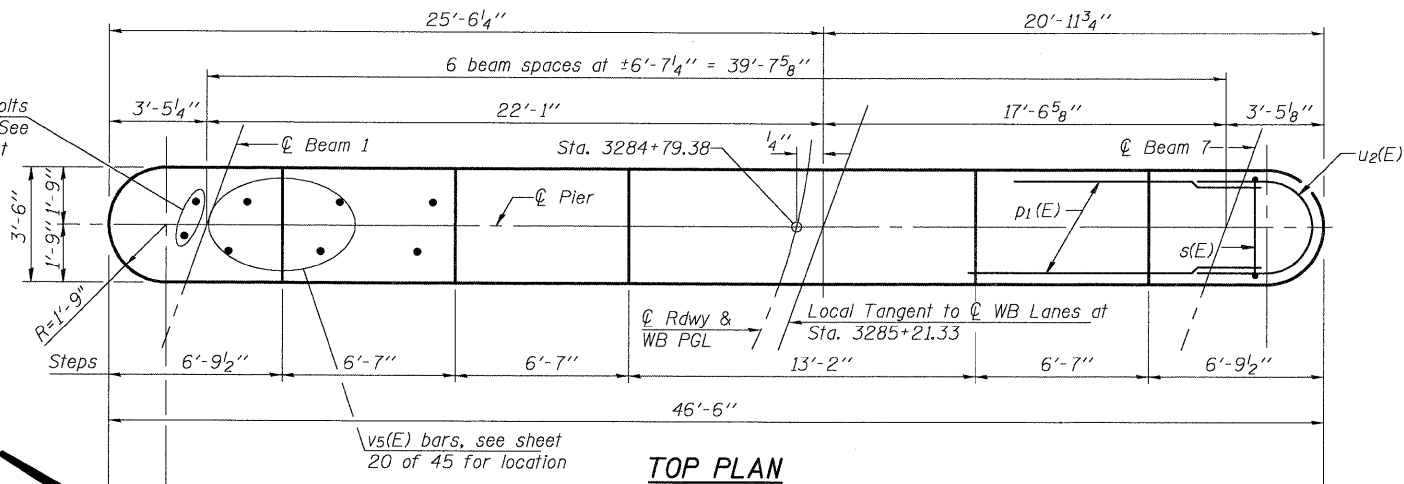
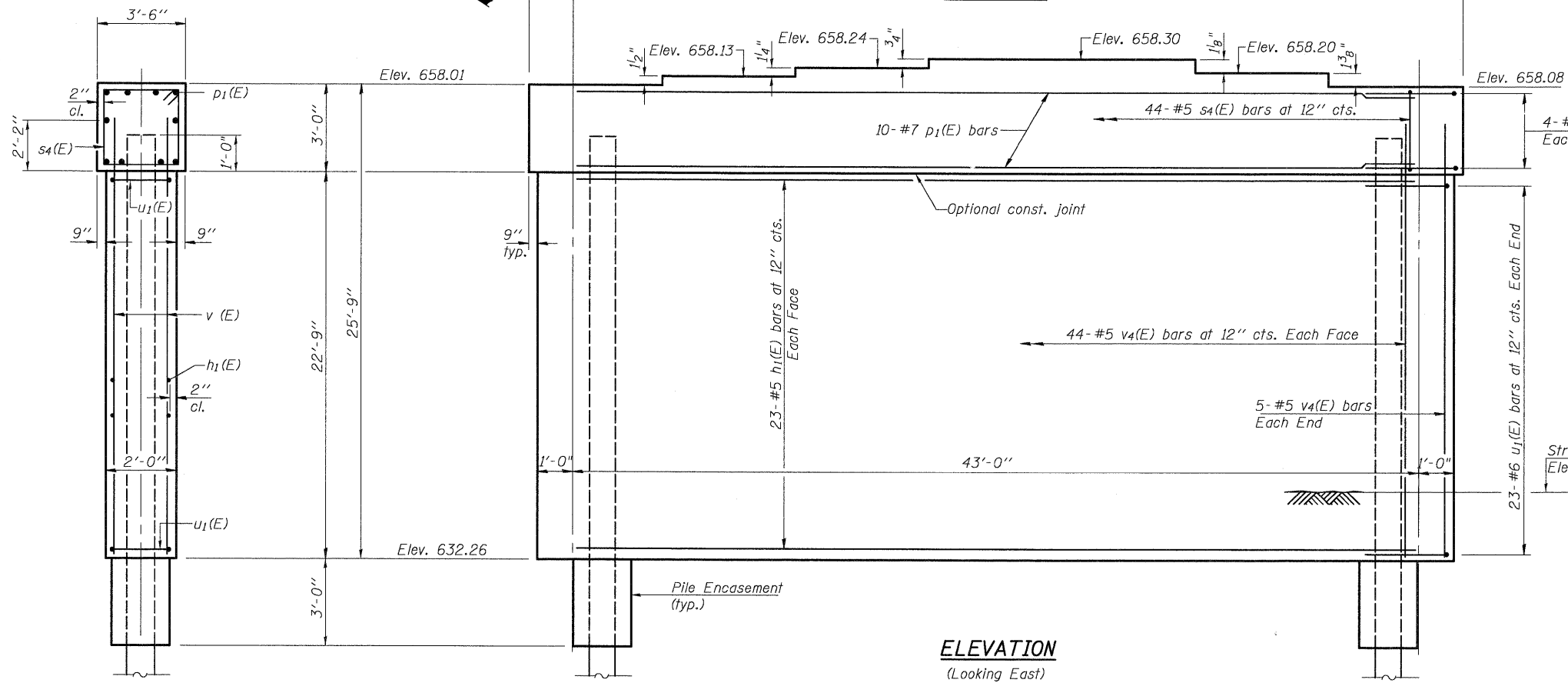


Notes:
 Space reinforcement in cap to miss anchor bolts.
 Four steps monolithically with cap.
 For details of piles, see sheet 38 of 45.

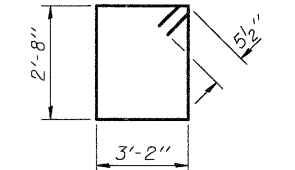
1/2"φ Anchor Bolts
 for Retainers, See
 Detail this sheet
 for location



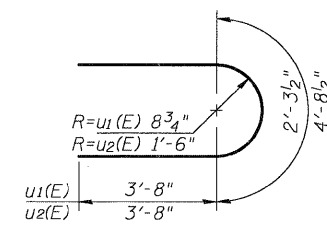
ANCHOR BOLT LOCATION DETAIL



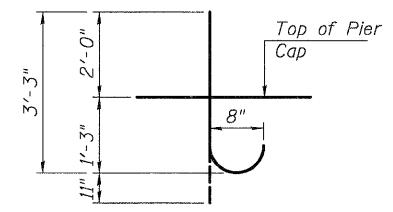
ELEVATION
 (Looking East)



BAR s4(E)



BARS u1(E) & u2(E)



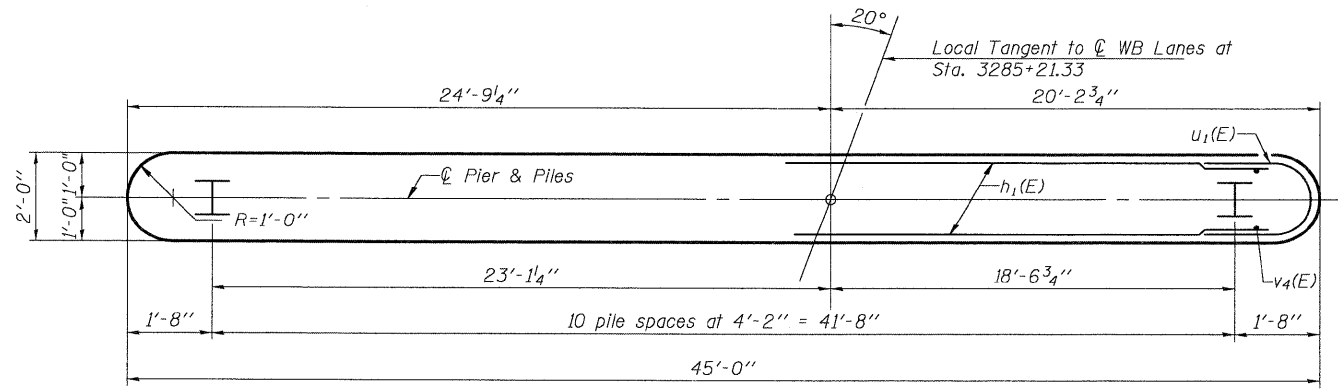
BAR v5(E)

BILL OF MATERIAL

| Bar | No. | Size | Length | Shape |
|--|-----|------|---------|-------|
| h1(E) | 46 | #5 | 43'-0" | — |
| p1(E) | 10 | #7 | 43'-0" | — |
| s4(E) | 44 | #5 | 12'-7" | □ |
| u1(E) | 46 | #6 | 9'-8" | U |
| u2(E) | 8 | #6 | 12'-1" | U |
| v4(E) | 98 | #5 | 24'-11" | — |
| v5(E) | 36 | #8 | 4'-2" | U |
| Concrete Structures | | | Cu. Yd. | 94.1 |
| Reinforcement Bars, Epoxy Coated | | | Pound | 7280 |
| Furnishing Steel Piles, HP12x53 | | | Foot | 760 |
| Driving Piles | | | Foot | 760 |
| Test Pile, Steel HP12x53 | | | Each | 1 |
| Underwater Structure Excavation | | | Each | 1 |
| Protection-Location 1 Concrete Encasement | | | Cu. Yd. | 3.8 |

PIER 1 WB
 SN 006-0173 (WB)

END VIEW



PLAN

PILE DATA

Type: Steel HP12 x 53
 Nominal Required Bearing: 315 kip
 Allowable Resistance Available: 105 kip
 Est. Length: 76 ft.
 No. Production Piles: 10
 No. Test Piles: 1

NOTE

If a portion of the pier wall or concrete encasement is under water, reinforcement may be placed underwater into forms. Concrete shall be tremied according to Article 503.08 of the Standard Specifications to an elevation of 1'-0" above the water line at the time of construction.

PLOT DATE = 09/08/2009
 FILE NAME = \\06080172.0173-66908-034-pc-1-pier-1-wb.dgn
 USER NAME = TFG
 PLOT SCALE = 1/8" = 1'-0"

Coombe-Bloxdorf P.C.
 - CIVIL ENGINEERS -
 - STRUCTURAL ENGINEERS -
 - LAND SURVEYORS -
 Design Firm License No. 184-002703

| | | | | | |
|----------------------|-------|-----------------|---------------------|-----------------|-------------------|
| PROJECT NO. 05061 | SCALE | DATE 8/05/09 | DESIGN BY RM/MCB | DRAWN BY TFG | CHECKED BY MCB |
|----------------------|-------|-----------------|---------------------|-----------------|-------------------|

SHEET NO. 34

45 SHEETS

| | | | | |
|---|--------------|------------------|---------------------|------------------|
| F.A.I. RTE. 80 | SECTION * | COUNTY BUREAU | TOTAL SHEETS 344 | SHEET NO. 187 |
| CONTRACT NO. 66908 | | | | |
| FED. ROAD DIST. NO. 7 ILLINOIS FED. AID PROJECT | | | | |

*06-L7BR & BR-1, TVB-M, 6BR & 6, 7 RS-1 & 11