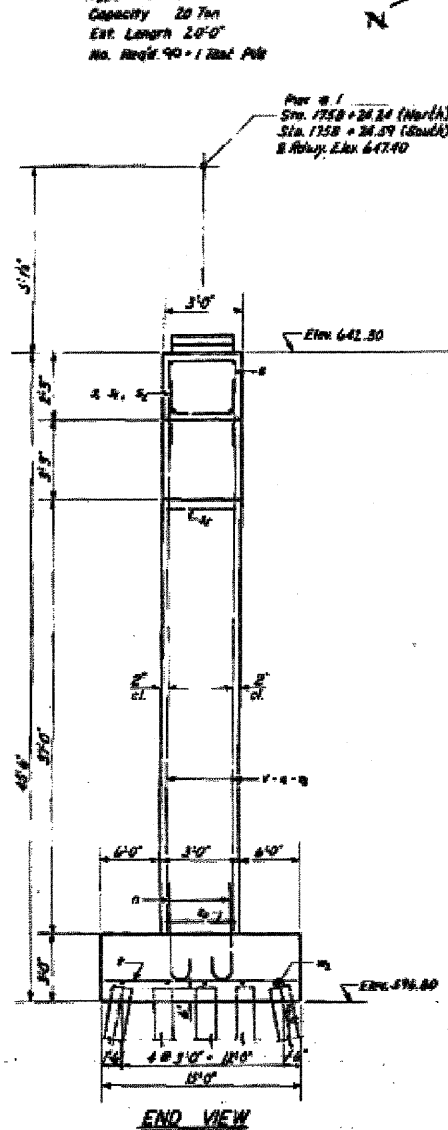


STATE OF ILLINOIS  
DEPARTMENT OF PUBLIC WORKS & BUILDINGS  
DIVISION OF HIGHWAYS

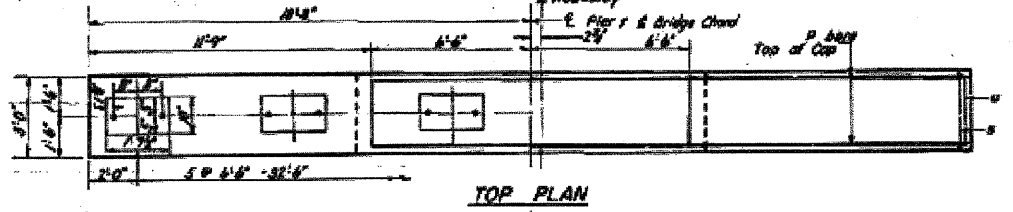
DATE	BY	CHKD	APP'D	SHEET NO.
11-2-60	W.A. SANDERS	W.A.S.	W.A.S.	12

**PILE DATA**  
Type - Crossed Pile  
Capacity 20 Ton  
Est. Length 24'-0"  
No. Bars 90 - 1 1/2" Dia.

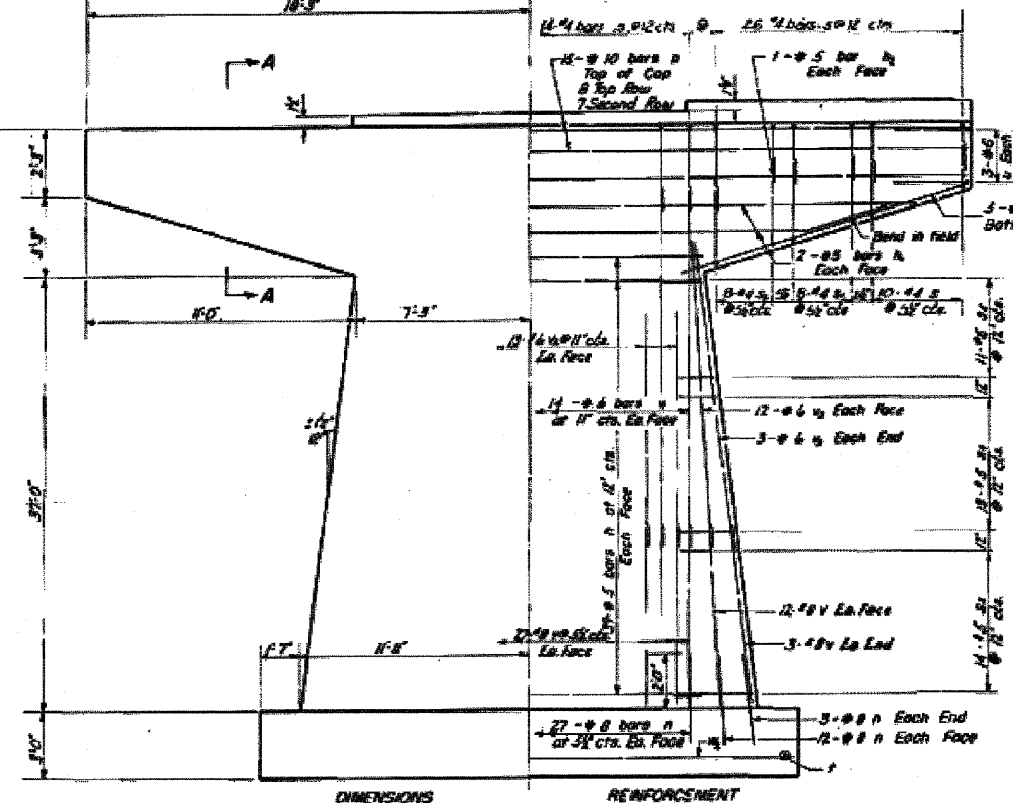
Pier # 1  
Sta. 1758 + 24.24 (North)  
Sta. 1758 + 24.29 (South)  
B. Hwy. E.H. 647.40



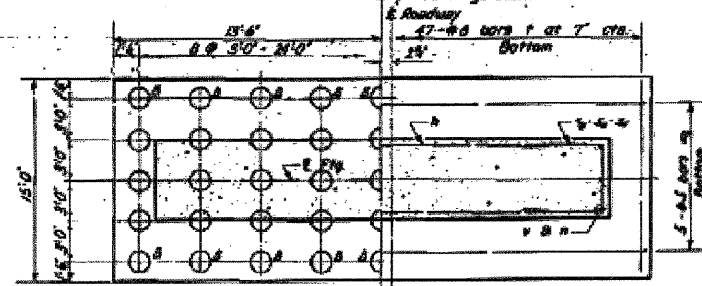
END VIEW



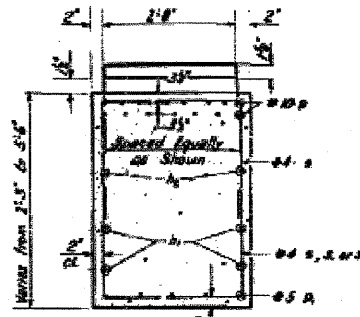
TOP PLAN



ELEVATION



FOOTING PLAN



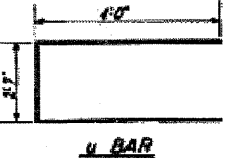
SECTION A-A

Note: All edges shall have standard 1/4" chamfers except footings.

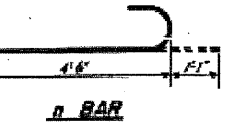
**A & B DIMENSIONS**

Bar	A	B
1	2'-0"	1'-0"
2	2'-0"	3'-0"
3	2'-0"	5'-1"
4	1'-0"	3'-0"
5	1'-0"	2'-0"

# BARS



U BAR



N BAR

**2-BRIDGES  
PIER 1  
BILL OF MATERIAL**

Bar	No.	Size	Length	Shape
h	126	#5	14'-0"	—
h	4	#5	18'-0"	—
h	8	#5	18'-0"	—
i	216	#8	5'-7"	—
p	30	#10	34'-0"	—
h	30	#5	12'-0"	—
u	172	#4	2'-0"	—
u	32	#4	8'-0"	—
u	32	#4	10'-10"	—
u	36	#5	14'-0"	—
u	32	#5	10'-0"	—
u	48	#5	7'-0"	—
v	90	#8	14'-0"	—
u	12	#6	10'-7"	—
v	226	#8	15'-0"	—
v	36	#6	23'-0"	—
u	42	#6	10'-0"	—
u	108	#6	20'-0"	—
u	10	#5	24'-0"	—
Class X Concrete		Qty. Yds.	294.8	
Reinforcement Bars		Lbs.	39,480	
Crossed Piles		Lin. Ft.	1800	
Steel Piles		Each	1	
Class B Soil for Struct.		Cu. Yds.	126	
Class B Energy Spread		Cu. Yds.	218	

PIER 1  
F.A.I. RT. 80 SEC. 6-7B-1  
BUREAU COUNTY  
STA. 1758 + 20

DESIGNED James H. Ponce  
CHECKED A. J. S. [Signature]  
DRAWN W. A. SANDERS  
CHECKED W. A. S. [Signature]

Nov. 2 1960  
EXAMINED [Signature]  
APPROVED [Signature]

P-2 Re-drawn 7-17-58 Rev. 8-25-59