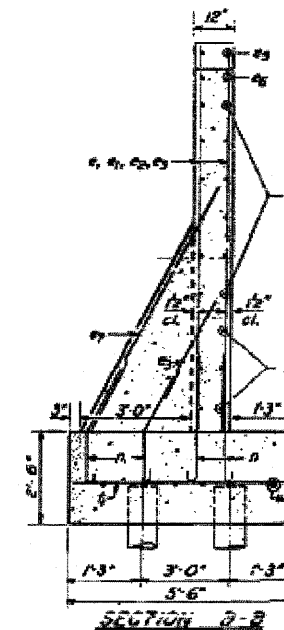
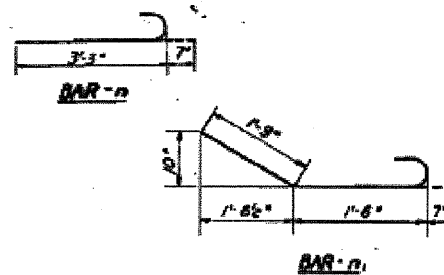
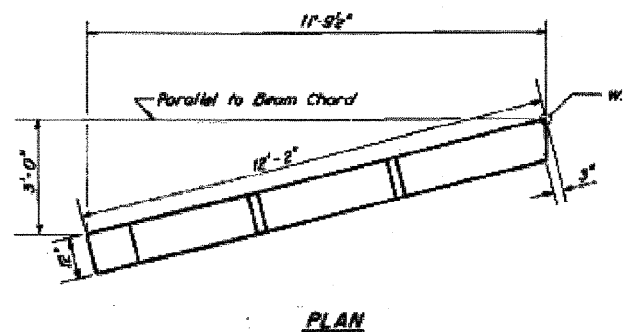
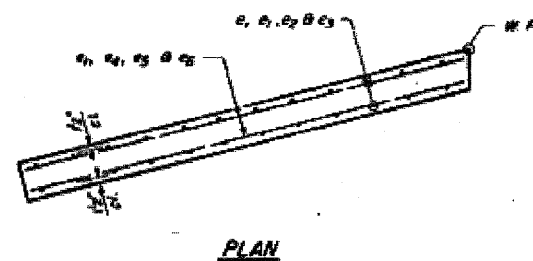
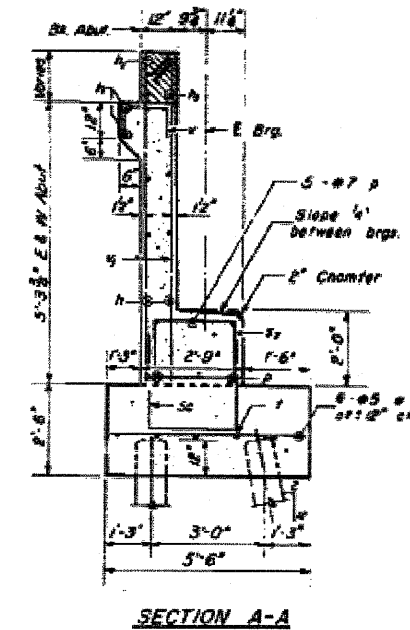
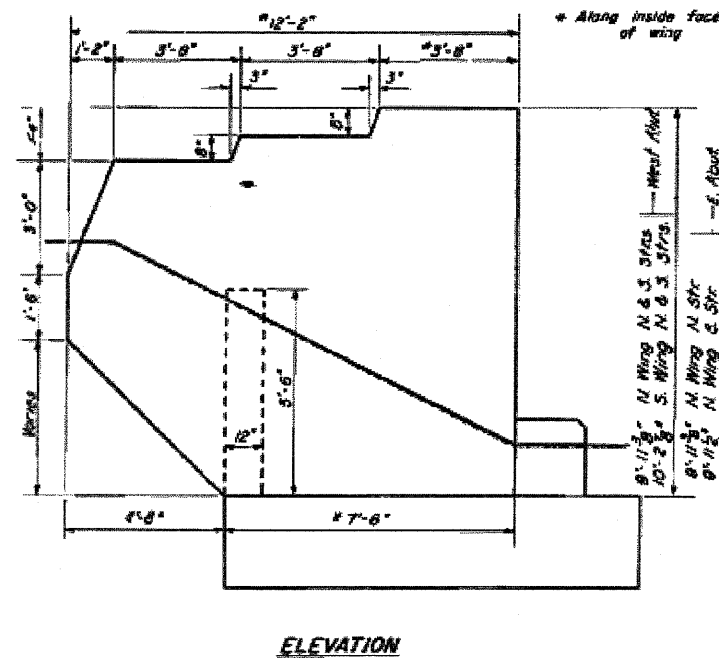
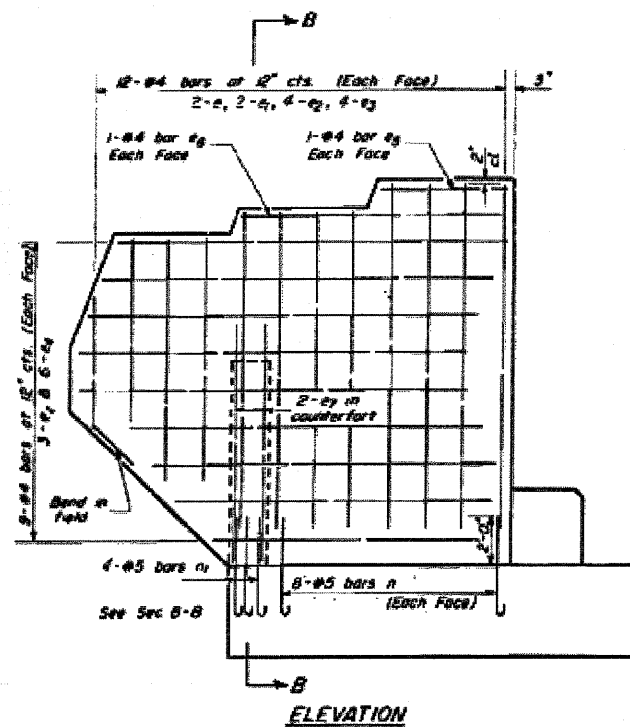


STATE OF ILLINOIS
DEPARTMENT OF PUBLIC WORKS & BUILDINGS
DIVISION OF HIGHWAYS

DATE	NO.	BY	CHKD.	DATE
1-1-60	06-718	BUREAU	43	23
JOB NO. 111-111		SHEET NO. 7		
JOB NO. 111-111		15 SHEETS		



**ONE END POST
BILL OF MATERIAL**

Bar	No.	Size	Length	Shape
c	4	#4	5'-0"	---
c1	4	#4	7'-0"	---
c2	4	#4	8'-6"	---
c3	8	#4	9'-3"	---
c4	12	#4	10'-0"	---
c5	2	#4	3'-3"	---
c6	2	#4	6'-0"	---
c7	2	#5	7'-0"	---
n	16	#5	9'-10"	---
n1	4	#5	3'-10"	---
Class X Concrete		Cu. Yds. 4.4		
Reinforcement Bars		Lbs. 333		

Note:
Quantities are included in Bill of
Material Sheets #5 & #6

**ABUT WING DETAILS
N. AND S. STRUCTURES
E.A.T. RT. 60 SEC. 06-718
BUREAU COUNTY
STA. 1762+19.91**

DESIGNED *M. P. ...*
CHECKED *...*
DRAWN *W. A. Sausman*
APPROVED *...*

AW-1 Drawn 1-28-60

FILE NAME =	USER NAME = braboyco	DESIGNED -	REVISED -
ca:\pwwork\pwwork\braboyco\d0112648\d368	908-sht-details.DGN	DRAWN -	REVISED -
	PLOT SCALE = 50.0638' / IN.	CHECKED -	REVISED -
	PLOT DATE = Sep 07, 2009 - 01:37:18 PM	DATE -	REVISED -

STATE OF ILLINOIS
DEPARTMENT OF TRANSPORTATION

EXISTING BRIDGE PLANS (FOR INFORMATION ONLY)

SCALE: SHEET NO. OF SHEETS STA. TO STA.

F.A.I. RTE.	SECTION	COUNTY	TOTAL SHEETS	SHEET NO.
I-80	**	BUREAU	344	286
			66908	
ILLINOIS FED. AID PROJECT				

**06-718&BR-1.7VB-M.6BR&6.7 RS-1 & I