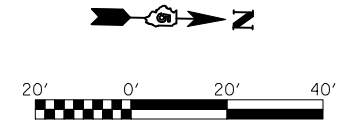
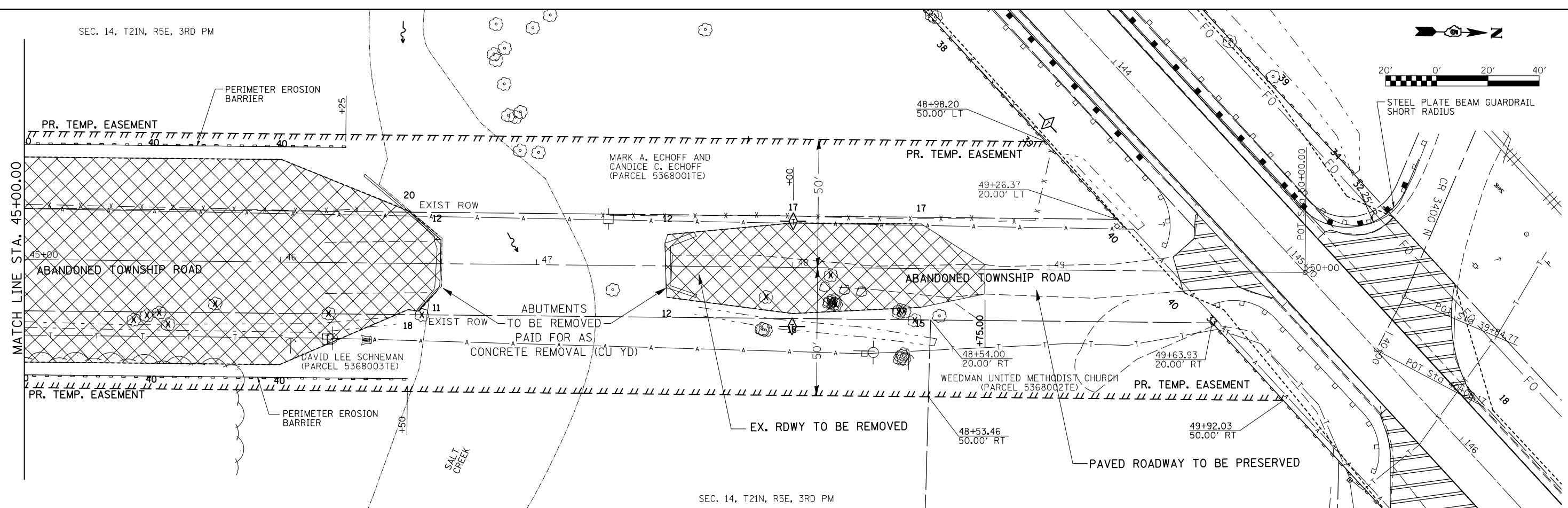


SEC. 14, T21N, R5E, 3RD PM

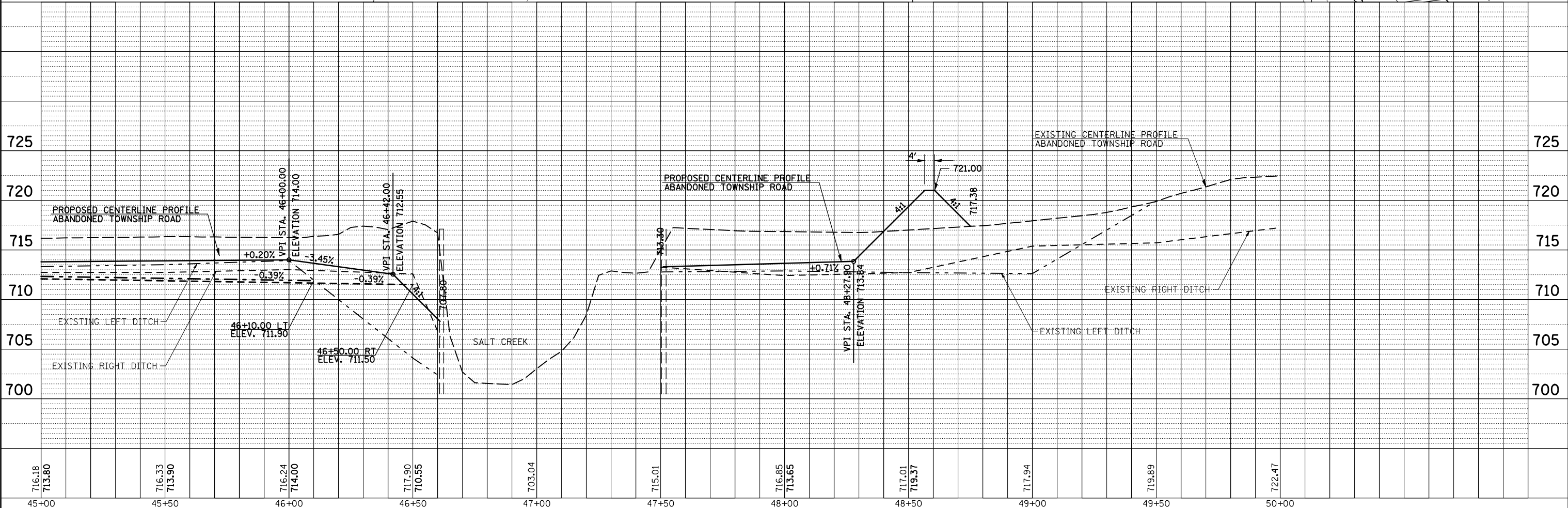


PLAN	SURVEYED	DATE
	PLOTTED	
	CHECKED	
	BY	
	NO. 1	
	NO. 2	
	NO. 3	



SEC. 14, T21N, R5E, 3RD PM

PROFILE	SURVEYED	DATE
	PLOTTED	
	CHECKED	
	BY	
	NO. 1	
	NO. 2	
	NO. 3	



FILE NAME =	USER NAME = stultsjw	DESIGNED - CWG	REVISED -
ct:\pwork\PWIDOT\STULTSJW\00158664\0570429-sht-rem.dgn		DRAWN - RJC	REVISED -
PLOT SCALE = 40.0000' / IN.		CHECKED -	REVISED -
PLOT DATE = 8/17/2009		DATE - 06-11-09	REVISED -

STATE OF ILLINOIS
DEPARTMENT OF TRANSPORTATION

IL-54 OVER SALT CREEK - TWP. RD. REMOVAL

SCALE: SHEET NO. 2 OF 2 SHEETS STA. 45+00.00 TO STA. 50+00.00

F.A.P. RTE.	SECTION	COUNTY	TOTAL SHEETS	SHEET NO.
71	(121BR)BR	DEWITT	75	13
CONTRACT NO. 70429				
FED. ROAD DIST. NO. ILLINOIS FED. AID PROJECT				