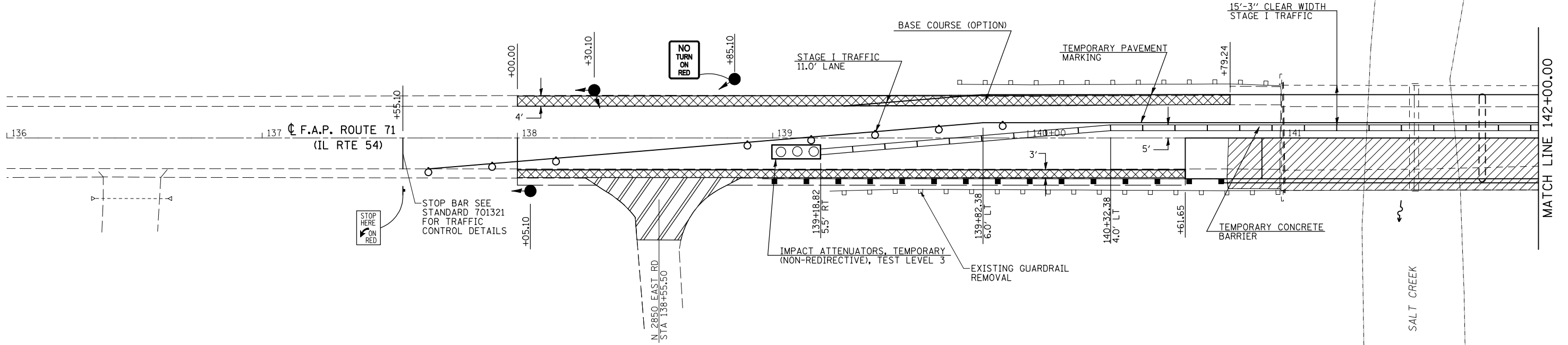
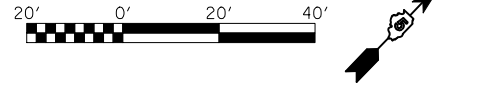


STAGE I TRAFFIC CONTROL

STAGE I NOTES

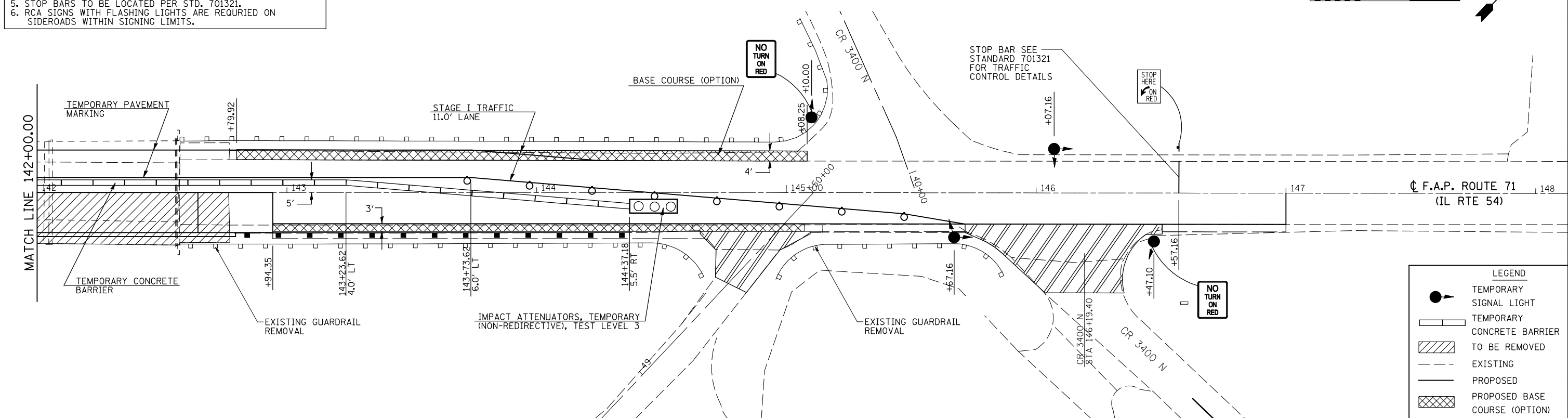
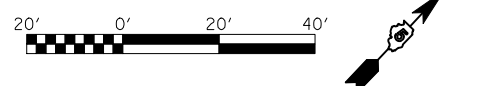
1. CONSTRUCT BASE COURSE (OPTION) FOR STAGE I AND STAGE II TRAFFIC USING TRAFFIC CONTROL STANDARD 701201.
2. ERECT SIGNS, TRAFFIC SIGNALS, TEMPORARY BARRIERS, ETC. ACCORDING TO TRAFFIC CONTROL STANDARD 701321.
3. PLACE TEMPORARY PAVEMENT MARKING LINE TO ALLOW FOR AN 11 FOOT TRAFFIC LANE.
4. REMOVE THE STAGE I PORTION OF THE EXISTING STRUCTURE, PAVEMENT AND GUARDRAIL
5. CONSTRUCT THE STAGE I PORTION OF THE NEW BRIDGE AND TEMPORARY RAMPS.
6. CONSTRUCT SEEDING AND MULCH.



GENERAL NOTES FOR STAGE CONSTRUCTION:

1. ALL SIGNAGE, SPACING, TRAFFIC CONTROL EQUIPMENT AND TEMPORARY PAVEMENT MARKINGS SHALL BE IN ACCORDANCE WITH THE LATEST VERSION OF HIGHWAY STANDARD 701321 AND SHALL BE INCLUDED IN THE CONTRACT UNIT PRICE EACH FOR TRAFFIC CONTROL AND PROTECTION STANDARD 701321.
2. ALL TEMPORARY BRIDGE TRAFFIC SIGNALS FOR CONSTRUCTION WILL BE MEASURED AS 1 (ONE) UNIT.
3. BARRIER OFFSETS ARE FROM THE CENTER OF THE BARRIER.
4. SEE BRIDGE PLANS FOR ADDITIONAL DETAILS.
5. STOP BARS TO BE LOCATED PER STD. 701321.
6. RCA SIGNS WITH FLASHING LIGHTS ARE REQUIRED ON SIDEROADS WITHIN SIGNING LIMITS.

STAGE I TRAFFIC CONTROL



LEGEND	
	TEMPORARY SIGNAL LIGHT
	TEMPORARY CONCRETE BARRIER
	TO BE REMOVED
	EXISTING
	PROPOSED
	PROPOSED BASE COURSE (OPTION)

FILE NAME =	USER NAME = stults.jw	DESIGNED - CWG	REVISED -	STATE OF ILLINOIS DEPARTMENT OF TRANSPORTATION	STAGE I CONSTRUCTION			F.A.P. RTE. 71	SECTION (121BR)BR	COUNTY DEWITT	TOTAL SHEETS 75	SHEET NO. 14
ce:\pwwork\pwwork\STULTS\JW\d0101439\0570429-shi-staging rev.dgn		DRAWN - RJC	REVISED -		SCALE: NONE	SHEET NO. 1 OF 2 SHEETS	STA. 136+00.00 TO STA. 148+00.00	FED. ROAD DIST. NO.	ILLINOIS FED. AID PROJECT	CONTRACT NO. 70429		
PLOT SCALE = 39.9471' / IN.		CHECKED -	REVISED -									
PLOT DATE = 8/17/2009		DATE - 06-15-09	REVISED -									