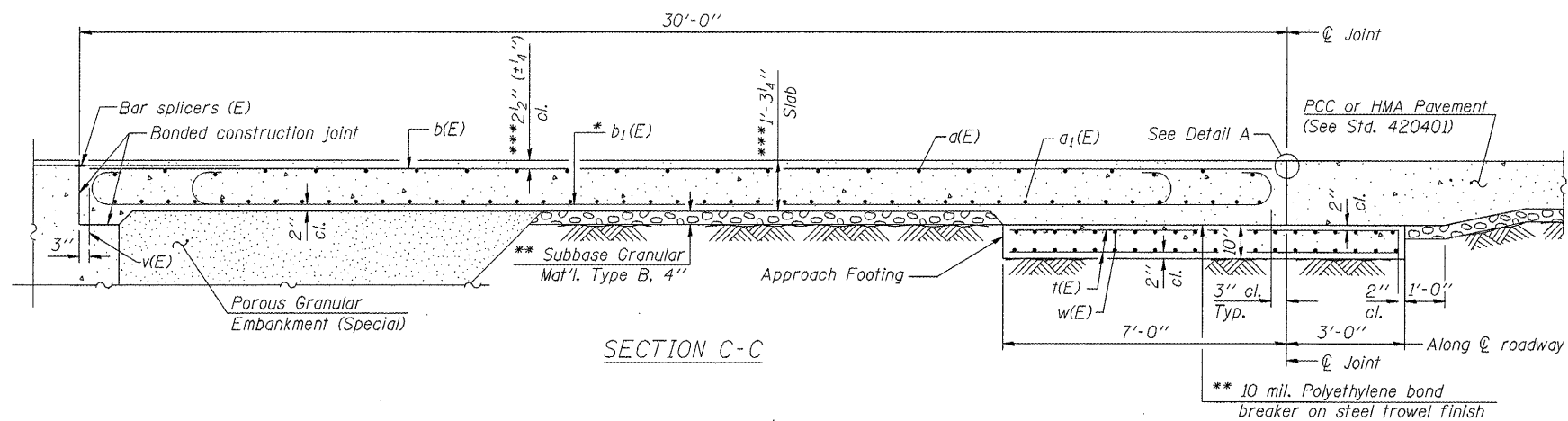
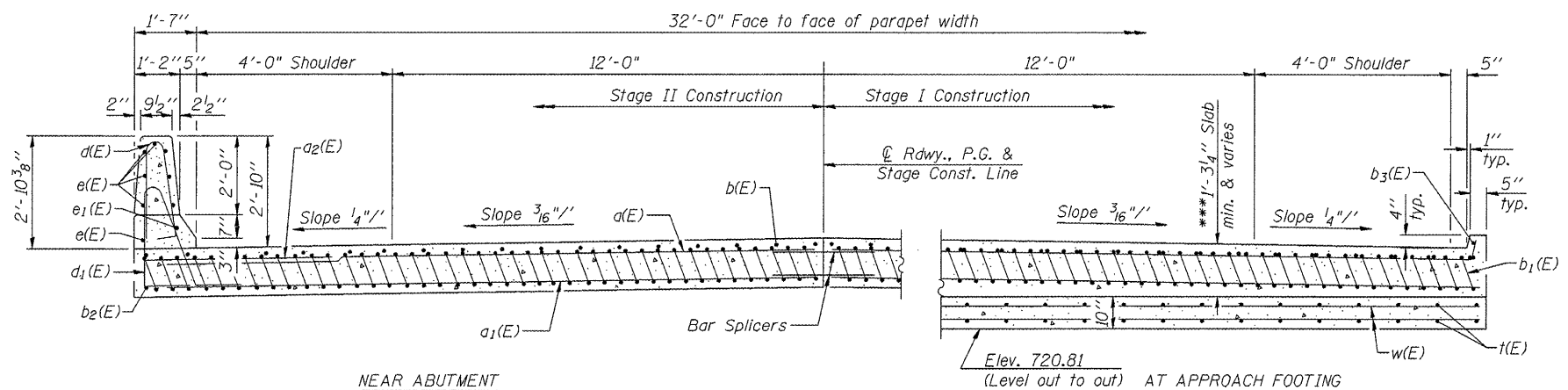


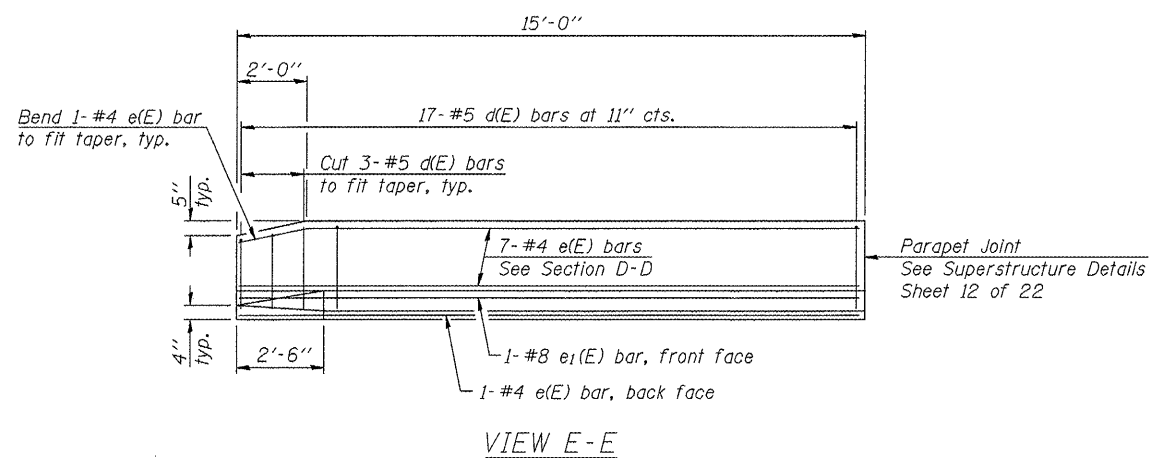
STATE OF ILLINOIS
DEPARTMENT OF TRANSPORTATION



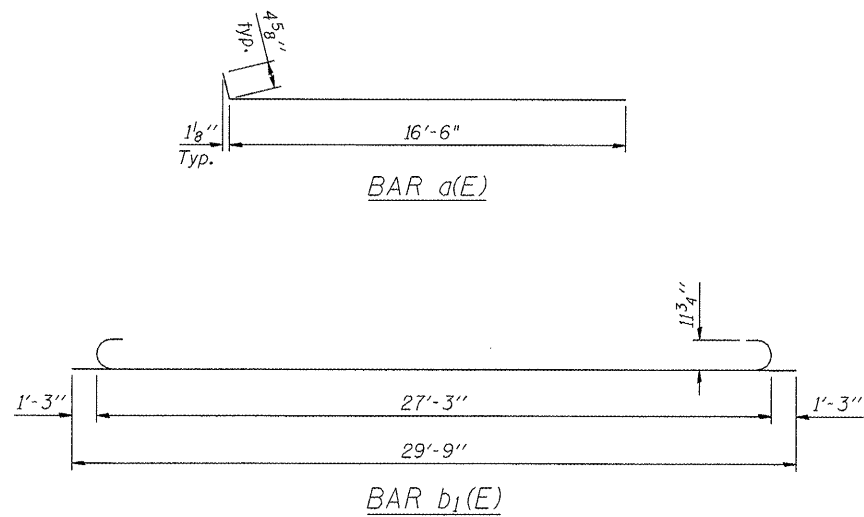
SECTION C-C



SECTION D-D
(See Plan for dimensions not shown)

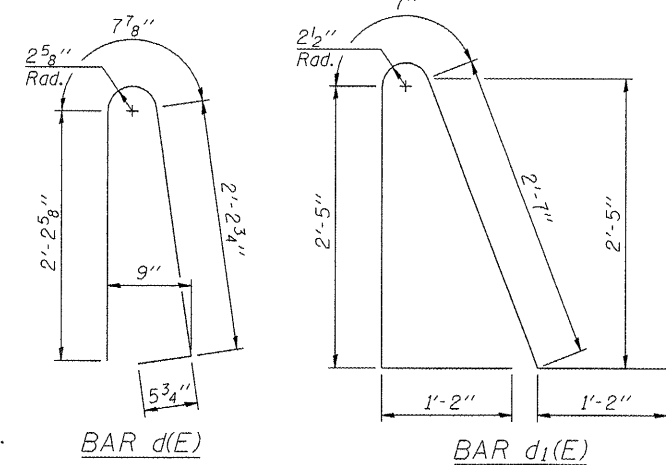


VIEW E-E



Notes:

See sheet 9 of 22 for Detail A and View B-B.
Approach slab and parapet concrete shall be paid for as Concrete Superstructure.
Approach footing concrete shall be paid for as Concrete Structures.
Reinforcement shall be paid for as Reinforcement Bars, Epoxy Coated.
For v(E) bar details, see sheet 12 of 22.
The approach footing maximum applied service bearing pressure (Qmax) = 2.0 ksf.
For bar splicer details, see sheet 20 of 22.
Cost of excavation for approach footing included with Concrete Structures.
For Porous Granular Embankment (Special) and drainage treatment details, see sheet 2 of 22.



- * Tilt #9 b1(E) bars as required to maintain clearance.
- ** Cost included with Concrete Superstructure.
- *** Prior to grinding.

TWO APPROACHES
BILL OF MATERIAL

Bar	No.	Size	Length	Shape
a(E)	100	#4	16'-11"	—
a1(E)	184	#5	16'-7"	—
a2(E)	48	#6	6'-0"	—
b(E)	56	#4	29'-8"	—
b1(E)	164	#9	29'-9"	—
b2(E)	4	#4	14'-8"	—
b3(E)	4	#4	14'-5"	—
d(E)	68	#5	5'-7"	—
d1(E)	68	#5	7'-11"	—
e(E)	32	#4	14'-8"	—
e1(E)	4	#8	14'-8"	—
t(E)	68	#4	9'-8"	—
w(E)	160	#5	16'-7"	—
Concrete Superstructure			Cu. Yd.	107.8
Concrete Structures			Cu. Yd.	20.9
Reinforcement Bars, Epoxy Coated			Pound	27,160

(Sheet 2 of 2)
BRIDGE APPROACH SLAB DETAILS
STRUCTURE NO. 020-0064

DESIGNED	KMS
CHECKED	SMM
DRAWN	KMS
CHECKED	SMM

SHEET NO. 10 22 SHEETS	F.A.P. RTE.	SECTION	COUNTY	TOTAL SHEETS	SHEET NO.
	71	(121BR)BR	DEWITT	75	39
FED. ROAD DIST. NO. 5 ILLINOIS			FED. AID PROJECT		
			CONTRACT NO. 70429		

CLARK DIETZ, INC.