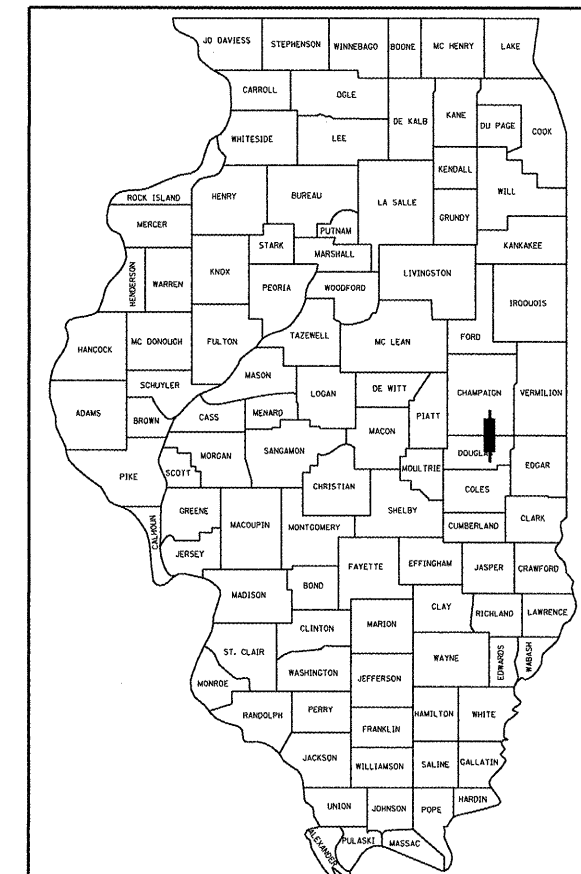


F.A.P. RTE.	SECTION	COUNTY	TOTAL SHEETS	SHEET NO.
808	*	**	715	1

(205,57,105)RS-2
 ** CHAMPAIGN & DOUGLAS

D-95-137-06



LOCATION OF SECTION INDICATED THUS: - [Symbol] -

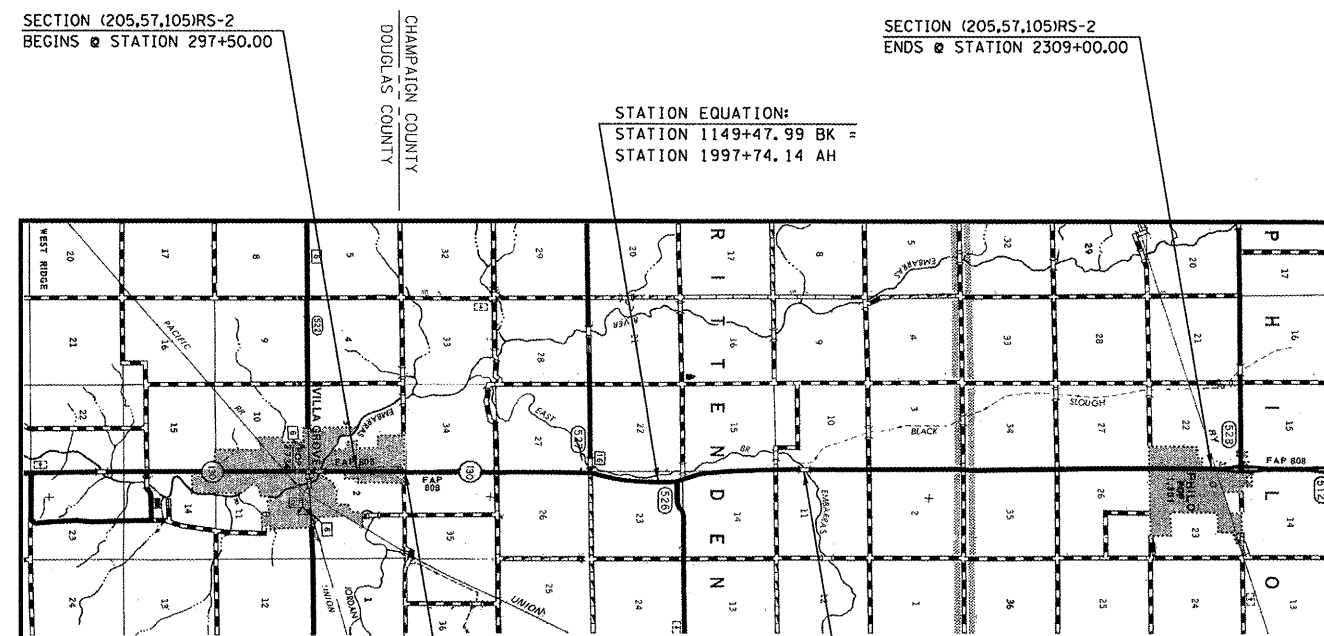
STATE OF ILLINOIS
 DEPARTMENT OF TRANSPORTATION
 DIVISION OF HIGHWAYS

**PROPOSED
 HIGHWAY PLANS**

F.A.P. ROUTE 808 (IL ROUTE 130)
 SECTION (205,57,105)RS-2
 PROJECT ACF-0808(036)
 CHAMPAIGN & DOUGLAS COUNTIES

C-95-137-06

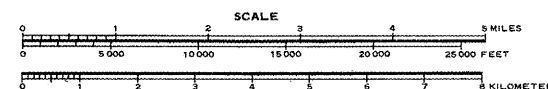
RESURFACING (3R) FROM MADISON ST. IN PHILO TO NCL OF VILLA GROVE



STATION EQUATION:
 STATION 1149+47.99 BK =
 STATION 1997+74.14 AH

STATION EQUATION:
 STATION 320+90.82 BK =
 STATION 1000+00.00 AH

BRIDGE OMISSION:
 S. N. 010-0113
 STATION 2076+00.00 TO
 STATION 2083+00.00



TOTAL LENGTH OF SECTION & PROJECT = 48,414.67 FEET = 9.169 MILES
 NET LENGTH OF SECTION & PROJECT = 47,714.67 FEET = 9.037 MILES

FOR INDEX OF SHEETS, SEE SHEET NO. 3
 FOR SUMMARY OF QUANTITIES, SEE SHEET NO. 7 - 12

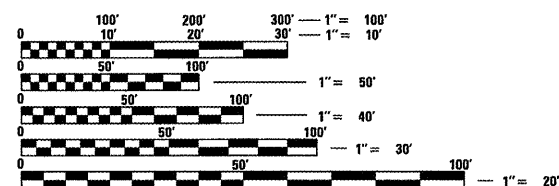
NOTE:
 SEE SHEET NO. 2 FOR PROPOSED
 ACROSS ROAD CULVERT LOCATION MAP

CURRENT ADT

NCL OF VILLA GROVE TO 1550N = 4,000 (2006)
 1550N TO MADISON ST. IN PHILO = 4,250 (2006)

DESIGN DESIGNATION

MINOR ARTERIAL



FULL SIZE PLANS HAVE BEEN PREPARED USING STANDARD
 ENGINEERING SCALES. REDUCED SIZED PLANS WILL NOT
 CONFORM TO STANDARD SCALES. IN MAKING MEASUREMENTS
 ON REDUCED PLANS, THE ABOVE SCALES MAY BE USED.

J.U.L.I.E.
 JOINT UTILITY LOCATION INFORMATION FOR EXCAVATION
 1-800-892-0123

CONTRACT NO. 70623

F.A.P. ROUTE 808 (IL ROUTE 130) SECTION (205,57,105)RS-2 CHAMPAIGN & DOUGLAS COUNTIES

STATE OF ILLINOIS
 DEPARTMENT OF TRANSPORTATION
 DIVISION OF HIGHWAYS

SUBMITTED 8/12 20 09
Joseph W. Cooney
 DEPUTY DIRECTOR OF HIGHWAYS, REGION ENGINEER
October 2, 20 09
Charles J. Ingersoll
 ENGINEER OF DESIGN AND ENVIRONMENT
October 2, 20 09
Christine M. Reed
 DIRECTOR OF HIGHWAYS, CHIEF ENGINEER

**PRINTED BY THE AUTHORITY
 OF THE STATE OF ILLINOIS**

PLOT DATE = 8/11/2009
 PLOT SCALE = 1" = 40'
 PLOT USER = p1p1p1
 USER NAME = p1p1p1
 DESIGNER: GREG EAGLIN
 SQUAD LEADER: GREG EAGLIN
 PROJECT ENGINEER: KEVIN TRAPP (217)465-4181