

SEC. 34, T. 17 N., R. 9 E., 3rd P.M.

SEC. 27, T. 17 N., R. 9 E., 3rd P.M.

F.A.P. RTE.	SECTION	COUNTY	TOTAL SHEETS	SHEET NO.
808		..	715	72
STA. 1044+75.00 TO STA. 1059+75.00				
FED. ROAD DIST. NO. ILLINOIS FED. AID PROJECT				

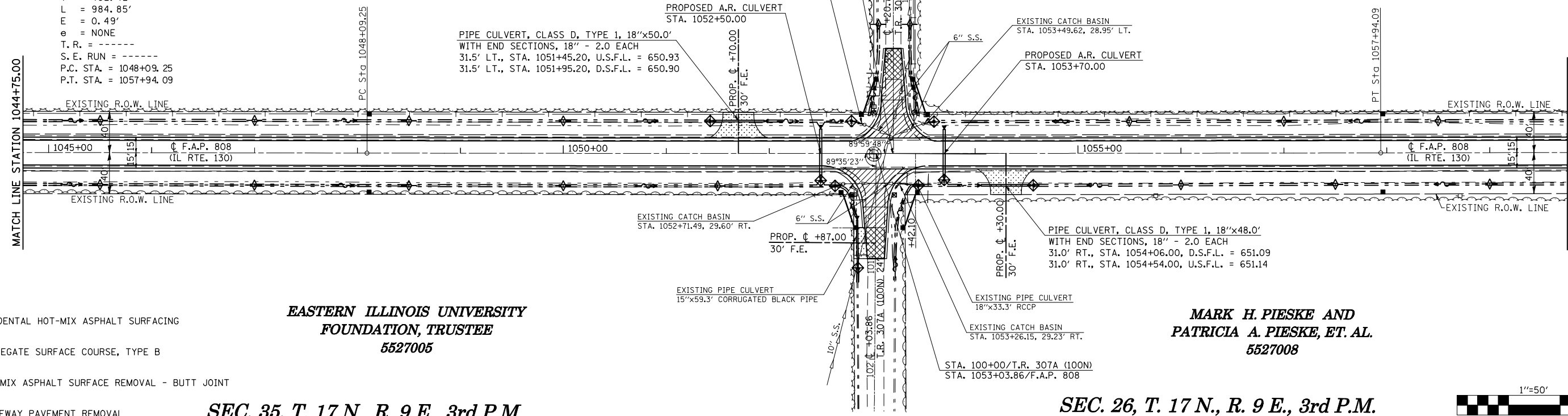
EXISTING CURVE 5  
 P. I. STA. = 1053+01.67  
 $\Delta = 00^\circ 13' 40.95''$  (LT)  
 $D = 00^\circ 01' 23.36''$   
 $R = 247,442.29'$   
 $T = 492.42'$   
 $L = 984.85'$   
 $E = 0.49'$   
 $e = \text{NONE}$   
 T. R. = -----  
 S. E. RUN = -----  
 P.C. STA. = 1048+09.25  
 P.T. STA. = 1057+94.09

THE TRUSTEES OF ILLINOIS  
 WESLEYEN UNIVERSITY  
 5527006

FOR SIDEROAD IMPROVEMENTS  
 SEE SHEET 139

BETTY J. CRAWFORD  
 REVOCABLE TRUST  
 5527007

- (205,57,105)RS-2
- .. CHAMPAIGN & DOUGLAS

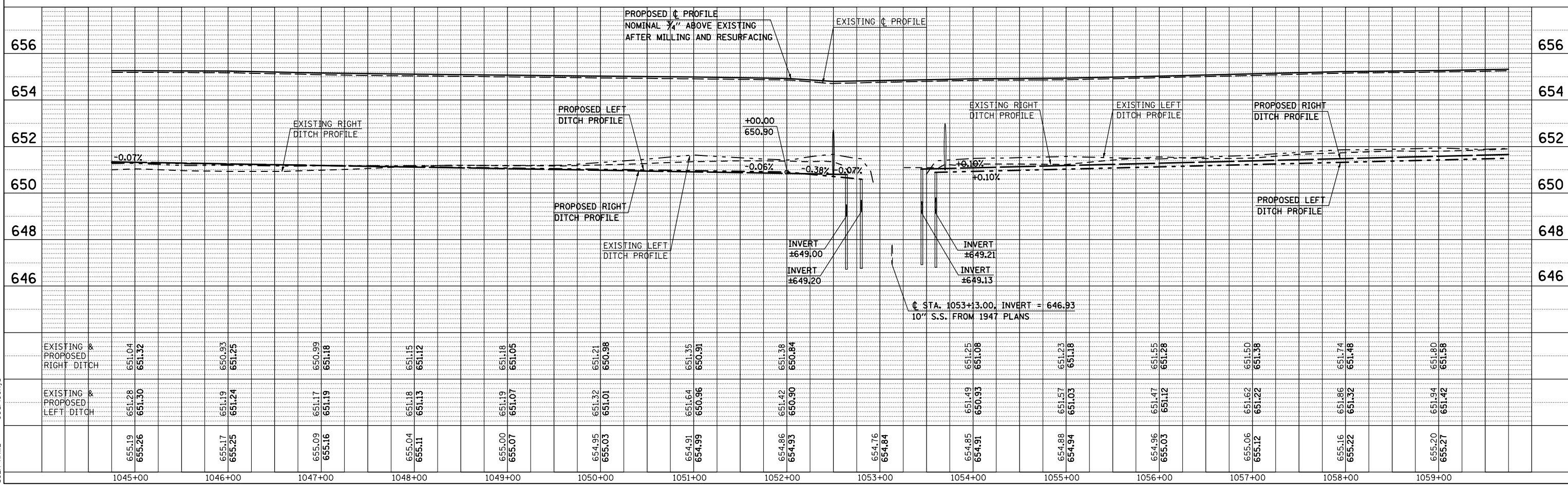
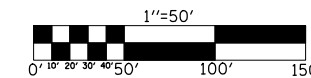


EASTERN ILLINOIS UNIVERSITY  
 FOUNDATION, TRUSTEE  
 5527005

MARK H. PIESKE AND  
 PATRICIA A. PIESKE, ET. AL.  
 5527008

SEC. 35, T. 17 N., R. 9 E., 3rd P.M.

SEC. 26, T. 17 N., R. 9 E., 3rd P.M.



PLAN	DATE
BY	
DATE	
BY	
DATE	
BY	
DATE	

PROFILE	DATE
BY	
DATE	
BY	
DATE	
BY	
DATE	

PLOT DATE = 8/13/2009  
 FILE NAME = c:\pwworkspace\pmdot\clearlock\id\001445\70623-3811-3910-0000\70623-3811-3910-0000.dwg  
 PLOT SCALE = 1/8" = 1' / IN.  
 USER NAME = ceo@clearlock.com