

F.A.P. RTE.	SECTION	COUNTY	TOTAL SHEETS	SHEET NO.
808	.	..	715	76
STA. 1104+50.00		TO STA. 1119+25.00		
FED. ROAD DIST. NO.		ILLINOIS FED. AID PROJECT		

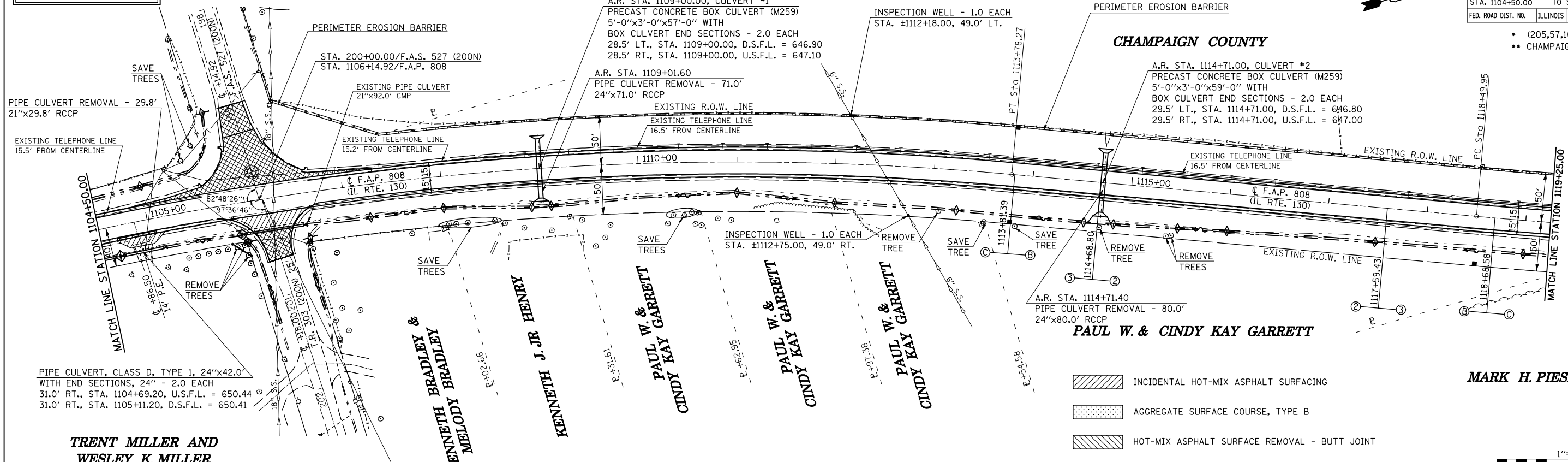
- (205,57,105)RS-2
- .. CHAMPAIGN & DOUGLAS

FOR SIDEROAD IMPROVEMENTS
SEE SHEET 148

GERALD CHRISTIAN

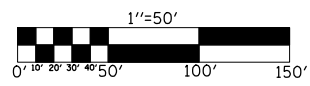
SEC. 23, T. 17 N., R. 9 E., 3rd P.M.

CHAMPAIGN COUNTY



- INCIDENTAL HOT-MIX ASPHALT SURFACING
- AGGREGATE SURFACE COURSE, TYPE B
- HOT-MIX ASPHALT SURFACE REMOVAL - BUTT JOINT
- DRIVEWAY PAVEMENT REMOVAL

MARK H. PIESKE

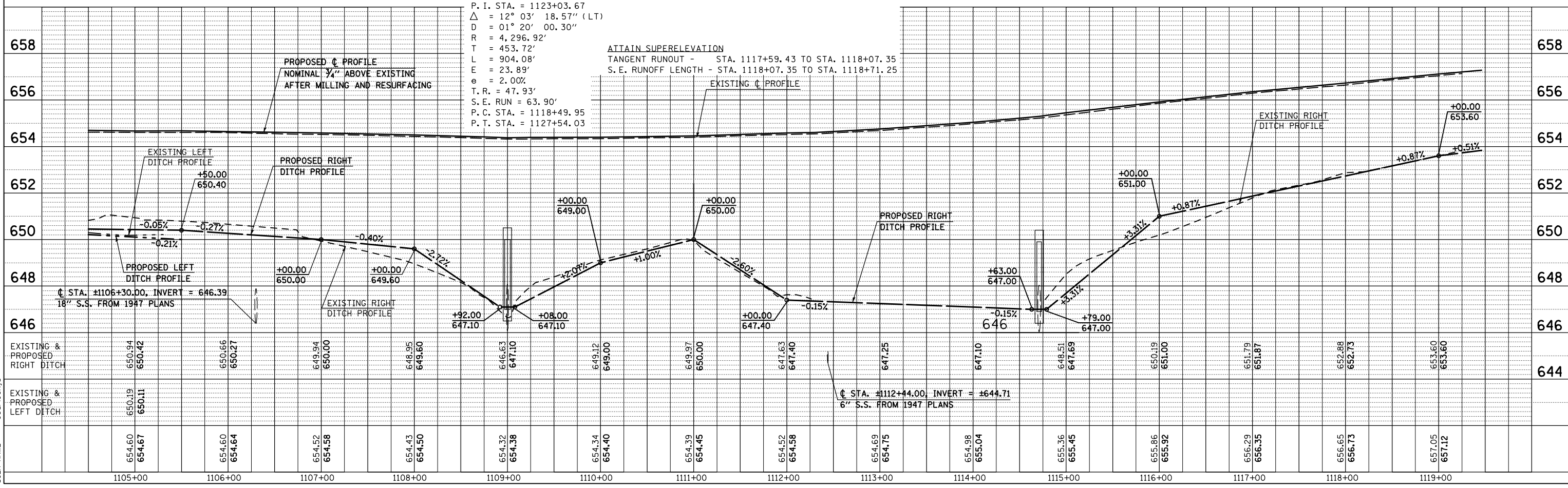


PLAN	SURVEYED	BY	DATE

**TRENT MILLER AND
WESLEY K. MILLER**
5527009

STA. 200+00/T.R. 303 (200N)
STA. 1106+18.00/F.A.P. 808

SEC. 23, T. 17 N., R. 9 E., 3rd P.M.



PROFILE	SURVEYED	BY	DATE

PLOT DATE = 8/13/2009
FILE NAME = c:\dw\work\p\m\dot\gearlock\j\d\001445\70623-
PLOT SCALE = 1/8" = 10'-0" / 1" = 120'-0"
USER NAME = gearlockj