

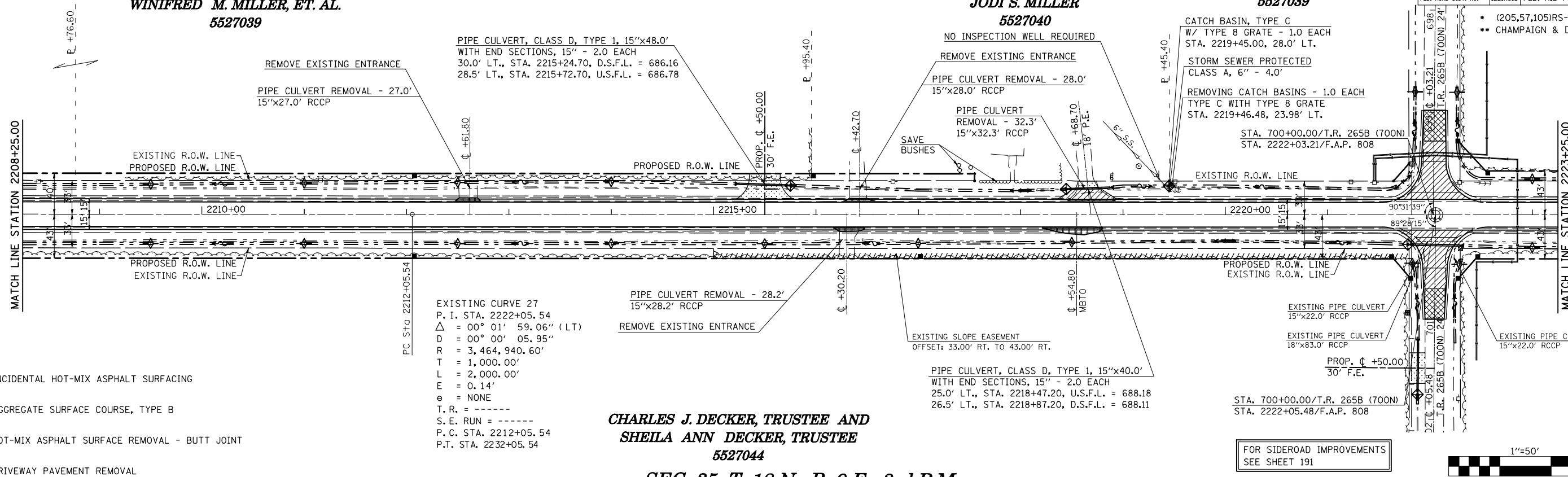
SEC. 34, T. 18 N., R. 9 E., 3rd P.M.

WINIFRED M. MILLER, ET. AL.
5527039

RICHARD E. MILLER AND
JODI S. MILLER
5527040

WINIFRED M. MILLER, ET. AL.
5527039

F.A.P. RTE.	SECTION	COUNTY	TOTAL SHEETS	SHEET NO.
808	.	..	715	93
STA. 2208+25.00		TO STA. 2223+25.00		
FED. ROAD DIST. NO.		ILLINOIS FED. AID PROJECT		



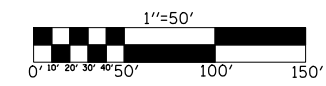
EXISTING CURVE 27
P. I. STA. 2222+05.54
Δ = 00° 01' 59.06" (LT)
D = 00° 00' 05.95"
R = 3,464,940.60'
T = 1,000.00'
L = 2,000.00'
E = 0.14'
e = NONE
T. R. = -----
S. E. RUN = -----
P. C. STA. 2212+05.54
P.T. STA. 2232+05.54

CHARLES J. DECKER, TRUSTEE AND
SHEILA ANN DECKER, TRUSTEE
5527044

SEC. 35, T. 18 N., R. 9 E., 3rd P.M.

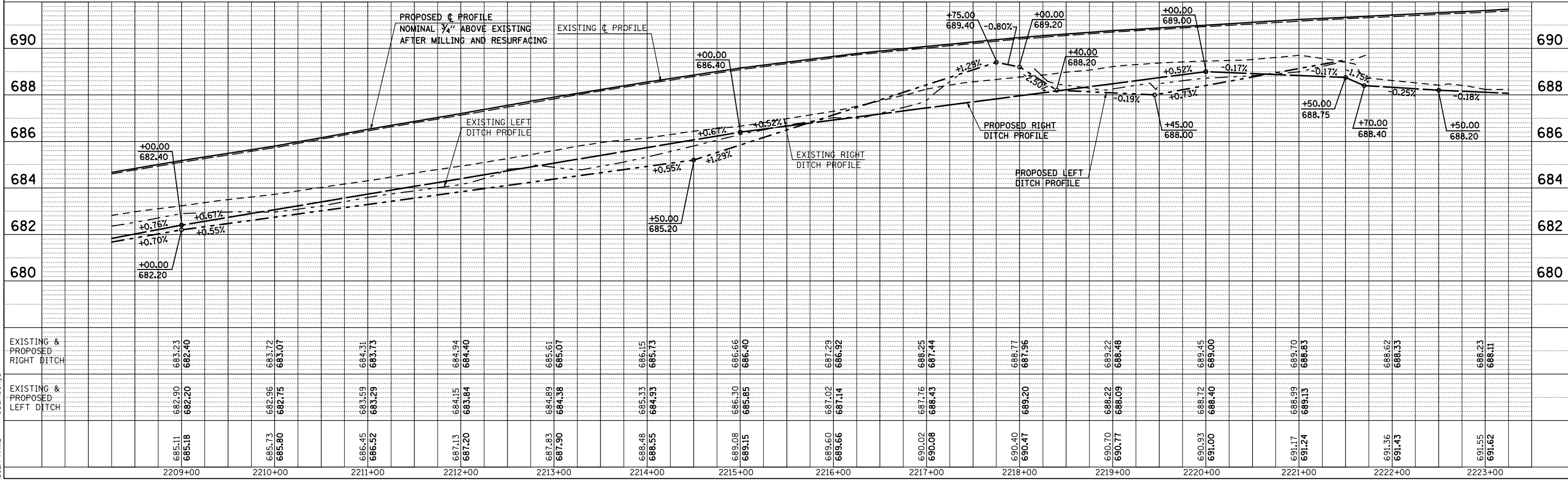
- INCIDENTAL HOT-MIX ASPHALT SURFACING
- AGGREGATE SURFACE COURSE, TYPE B
- HOT-MIX ASPHALT SURFACE REMOVAL - BUTT JOINT
- DRIVEWAY PAVEMENT REMOVAL

FOR SIDEROAD IMPROVEMENTS
SEE SHEET 191



PLAN	SURVEYED	BY	DATE

PROFILE	SURVEYED	BY	DATE



PLOT DATE = 8/13/2009
FILE NAME = c:\pwworkspace\pwworkspace\1058824\1058824.dwg
PLOT SCALE = 1/8\"/>