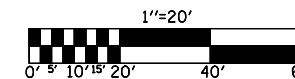


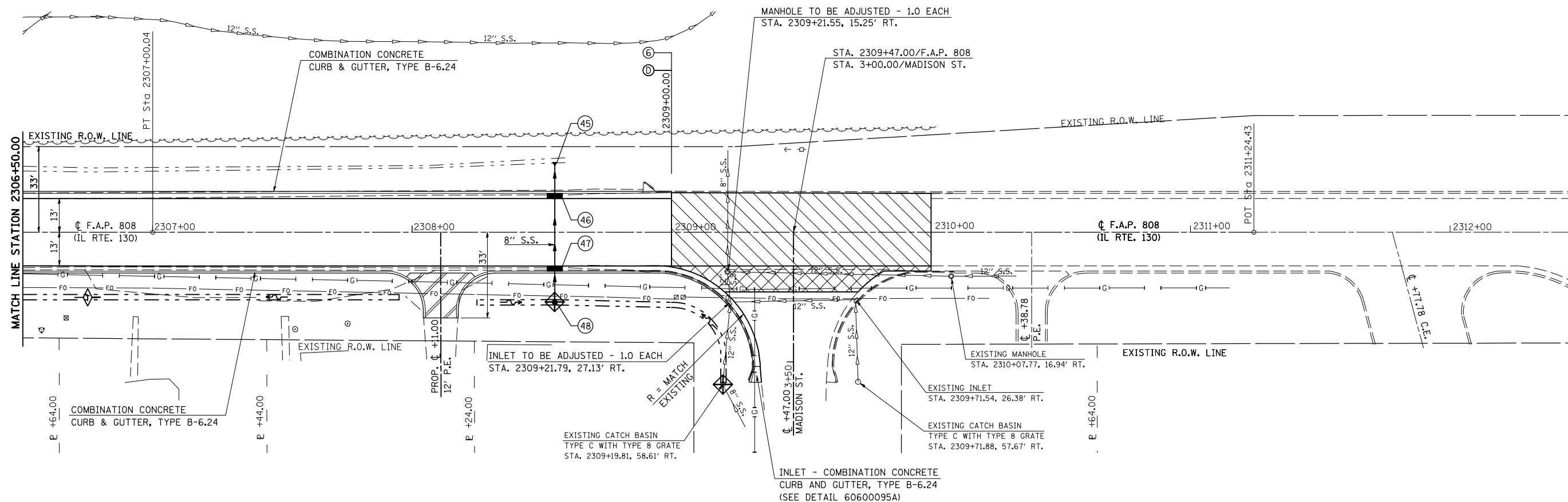
F.A.P. RTE.	SECTION	COUNTY	TOTAL SHEETS	SHEET NO.
808	.	..	715	109
STA. 2306+50.00		TO STA. 2310+00.00		
FED. ROAD DIST. NO.	ILLINOIS	FED. AID PROJECT		

- (205,57,105)RS-2
- CHAMPAIGN & DOUGLAS



SEC. 22, T. 18 N., R. 9 E., 3rd P.M.

STEVEN J. KHACHATURIAN



GERALD CHRISTIAN

JOSEPH & RACHEL GARRETT

SUSAN MILLER

ALLAN MILLER

- INCIDENTAL HOT-MIX ASPHALT SURFACING
- AGGREGATE SURFACE COURSE, TYPE B
- HOT-MIX ASPHALT SURFACE REMOVAL - BUTT JOINT
- P.C.C. DRIVEWAY PAVEMENT, 6"

SEC. 23, T. 18 N., R. 9 E., 3rd P.M.

ILLINOIS DEPARTMENT OF TRANSPORTATION
PLAN SHEET
 STATION 2306+50.00 TO STATION 2310+00.00
 F.A.P. ROUTE 808 (IL ROUTE 130)
 SECTION (205,57,105)RS-2
 CHAMPAIGN & DOUGLAS COUNTIES
 SCALE: 1" = 20'
 DATE: 07/13/09
 DRAWN BY: B.B.P.
 CHECKED BY: G.A.E.

PLOT DATE = 8/13/2009
 FILE NAME = G:\b\work\K\PHWDOT\CEARLOCK\JD\010445\70623-sht-1-plnprf_20.dgn
 USER NAME = ceartockj