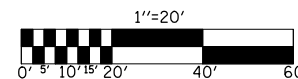


F.A.P. RTE.	SECTION	COUNTY	TOTAL SHEETS	SHEET NO.
808	*	**	715	148

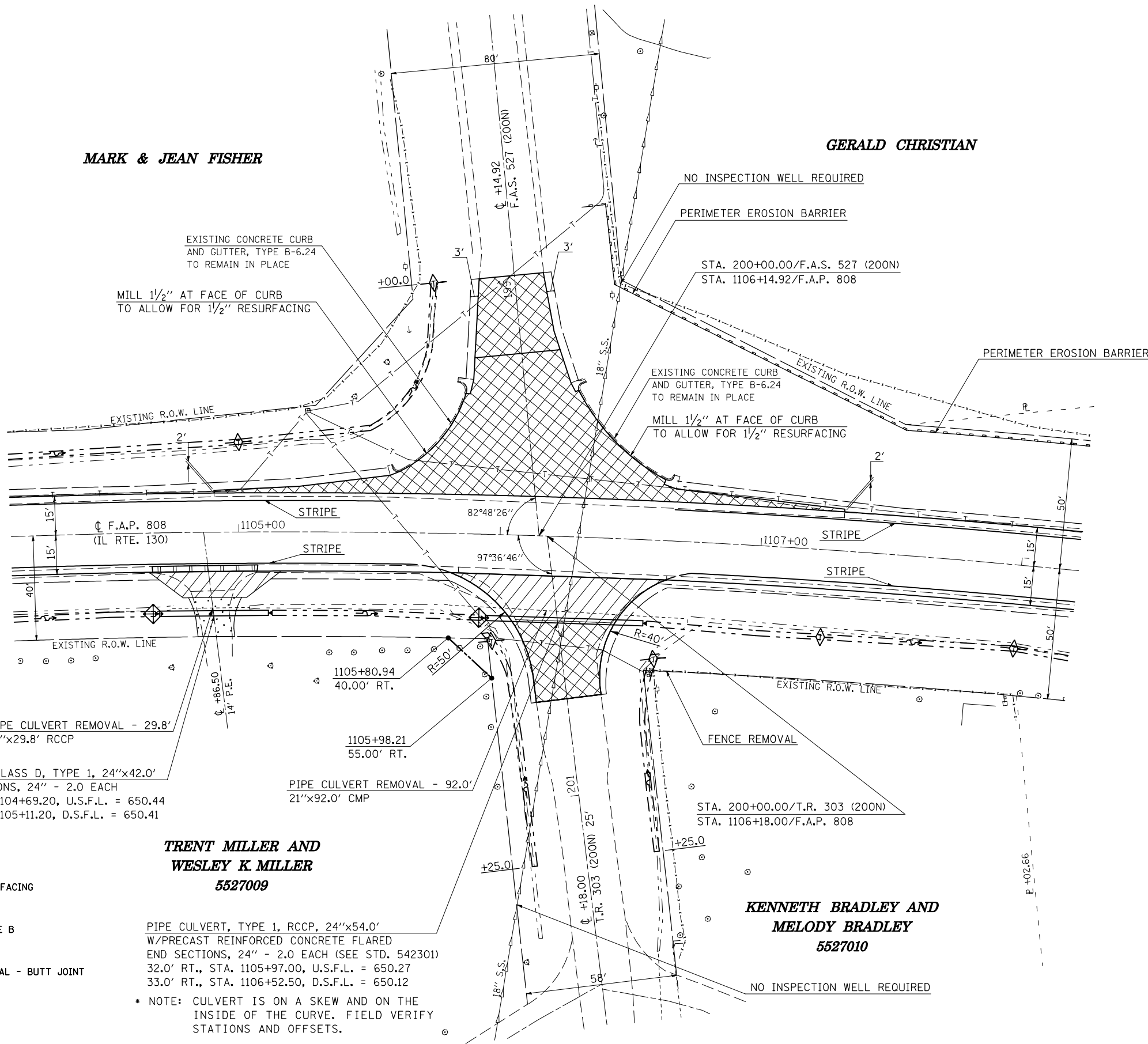
STA.	TO STA.
FED. ROAD DIST. NO.	ILLINOIS FED. AID PROJECT

- (205,57,105)RS-2
- \*\* CHAMPAIGN & DOUGLAS



**MARK & JEAN FISHER**

**GERALD CHRISTIAN**



PIPE CULVERT REMOVAL - 29.8'  
21"x29.8' RCCP

PIPE CULVERT, CLASS D, TYPE 1, 24"x42.0'  
WITH END SECTIONS, 24" - 2.0 EACH  
31.0' RT., STA. 1104+69.20, U.S.F.L. = 650.44  
31.0' RT., STA. 1105+11.20, D.S.F.L. = 650.41

1105+80.94  
40.00' RT.

1105+98.21  
55.00' RT.

PIPE CULVERT REMOVAL - 92.0'  
21"x92.0' CMP

**TRENT MILLER AND  
WESLEY K. MILLER  
5527009**

PIPE CULVERT, TYPE 1, RCCP, 24"x54.0'  
W/PRECAST REINFORCED CONCRETE FLARED  
END SECTIONS, 24" - 2.0 EACH (SEE STD. 542301)  
32.0' RT., STA. 1105+97.00, U.S.F.L. = 650.27  
33.0' RT., STA. 1106+52.50, D.S.F.L. = 650.12

\* NOTE: CULVERT IS ON A SKEW AND ON THE  
INSIDE OF THE CURVE. FIELD VERIFY  
STATIONS AND OFFSETS.

**KENNETH BRADLEY AND  
MELODY BRADLEY  
5527010**

- INCIDENTAL HOT-MIX ASPHALT SURFACING
- AGGREGATE SURFACE COURSE, TYPE B
- HOT-MIX ASPHALT SURFACE REMOVAL - BUTT JOINT
- DRIVEWAY PAVEMENT REMOVAL

ILLINOIS DEPARTMENT OF TRANSPORTATION  
**INTERSECTION PLAN SHEET**  
**F.A.S. 527/200N & T.R. 303/200N**  
**@ F.A.P. 808 (IL. RTE. 130)**  
F.A.P. 808 (IL. RTE. 130)  
SECTION (205,57,105)RS-2  
CHAMPAIGN & DOUGLAS COUNTIES  
SCALE: 1" = 20'  
DATE: 07/10/09

PLOT DATE = 8/12/2009  
 FILE NAME = G:\DWG\WORK\IN\PROJECT\CEARLOCK\DWG\010445\70623-sht1-inter.sec.dgn  
 USER NAME = ceartock\jld

DRAWN BY: B.B.P.  
CHECKED BY: G.A.E.