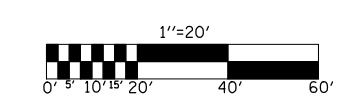


F.A.P. RTE.	SECTION	COUNTY	TOTAL SHEETS	SHEET NO.
808	*	**	715	156

STA. TO STA.
FED. ROAD DIST. NO. ILLINOIS FED. AID PROJECT

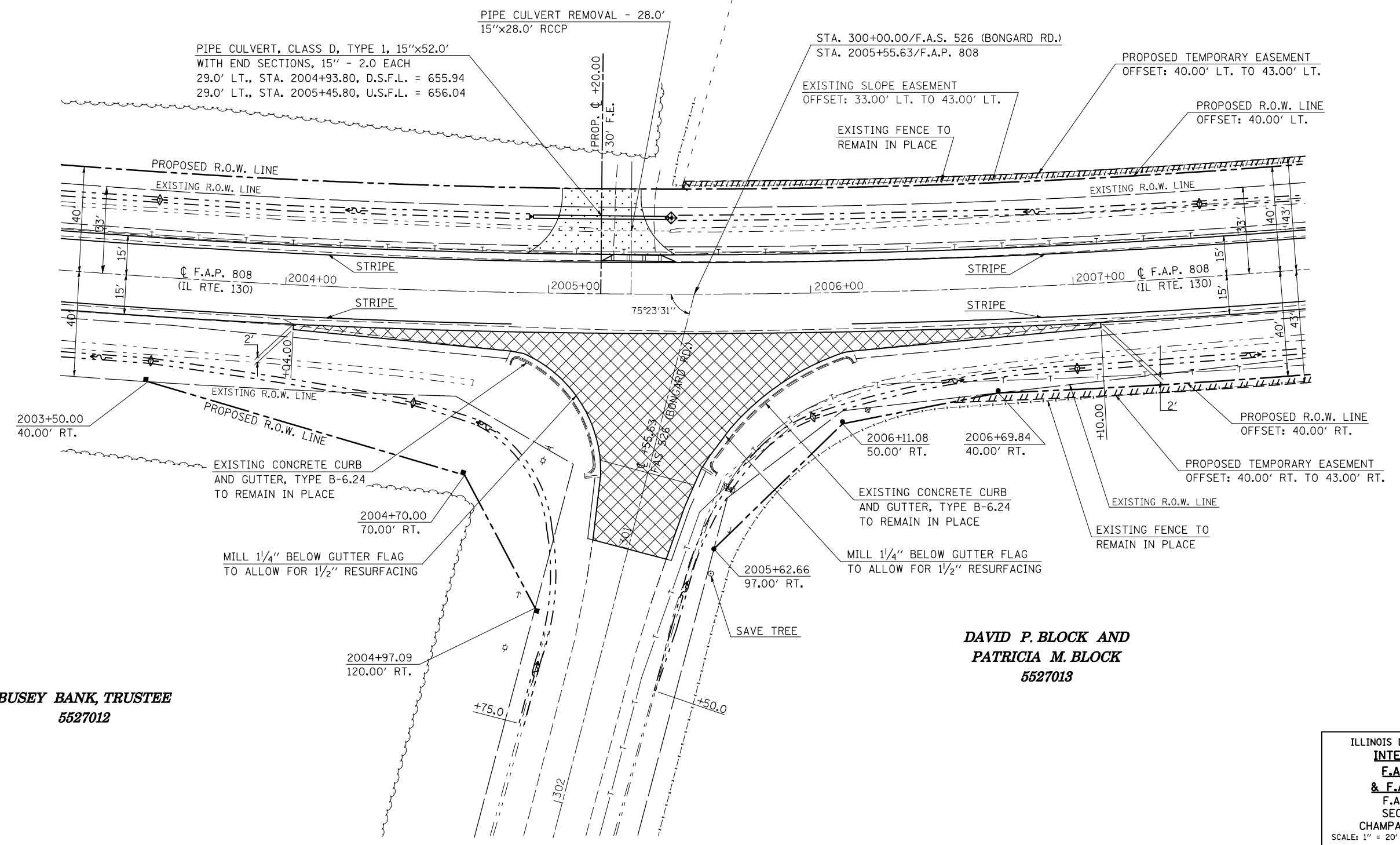
- (205,57,105)RS-2
- ** CHAMPAIGN & DOUGLAS



- INCIDENTAL HOT-MIX ASPHALT SURFACING
- AGGREGATE SURFACE COURSE, TYPE B
- HOT-MIX ASPHALT SURFACE REMOVAL - BUTT JOINT
- DRIVEWAY PAVEMENT REMOVAL

BUSEY BANK, TRUSTEE
5527012

DAVID P. BLOCK AND
PATRICIA M. BLOCK
5527013



BUSEY BANK, TRUSTEE
5527012

DAVID P. BLOCK AND
PATRICIA M. BLOCK
5527013

PLOT DATE = 8/12/2009
FILE NAME = G:\DWG\WORK\PROJECTS\70623\sh1-inter.sec.dgn
USER NAME = cearlOCKJ

ILLINOIS DEPARTMENT OF TRANSPORTATION
INTERSECTION PLAN SHEET
F.A.S. 526/BONGARD RD.
& F.A.P. 808 (IL. RTE. 130)
F.A.P. 808 (IL. RTE. 130)
SECTION (205,57,105)RS-2
CHAMPAIGN & DOUGLAS COUNTIES
SCALE: 1" = 20'
DATE: 04/30/09
DRAWN BY: B.B.P.
CHECKED BY: G.A.E.