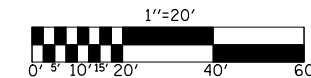


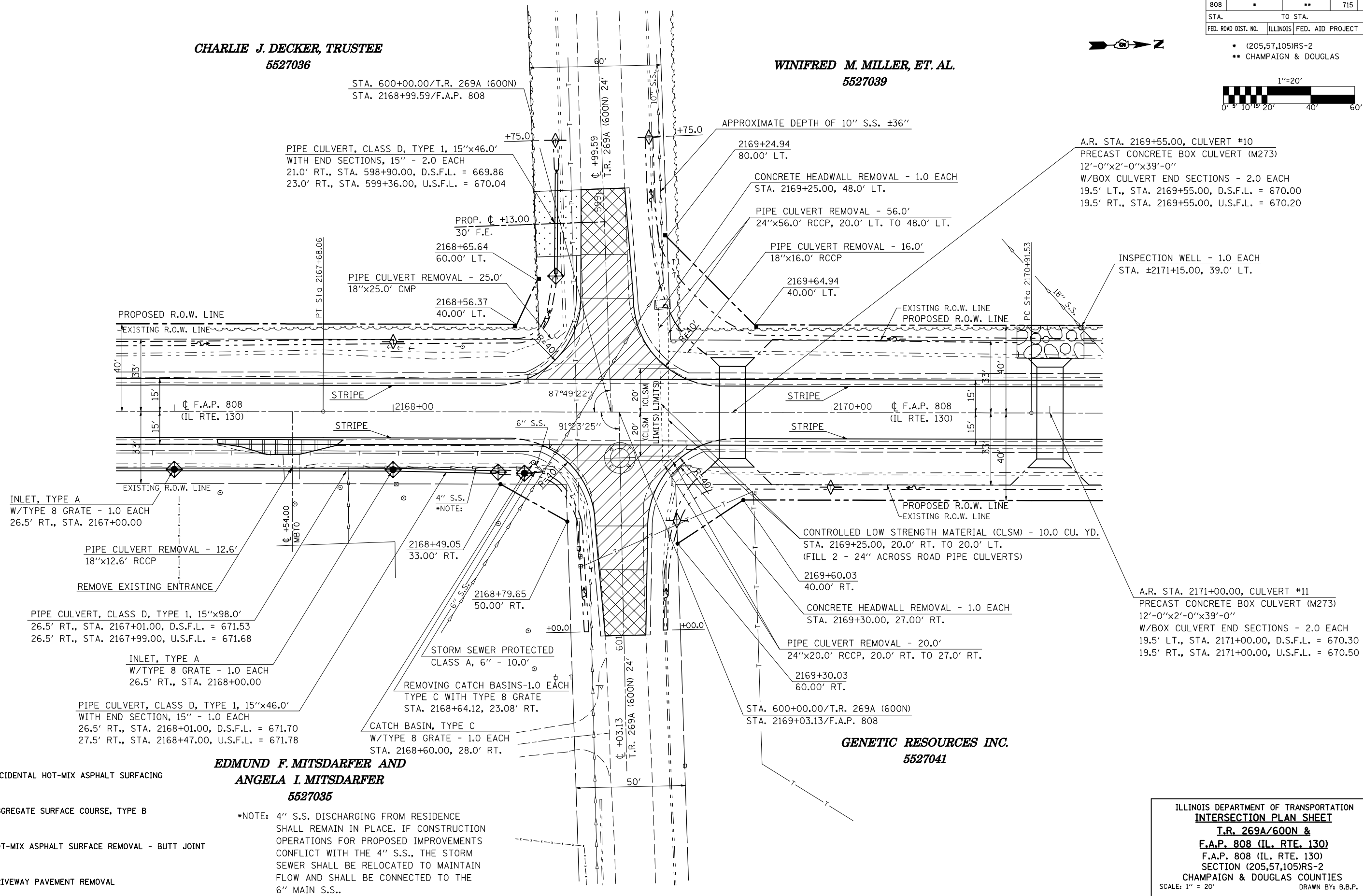
F.A.P. RTE.	SECTION	COUNTY	TOTAL SHEETS	SHEET NO.
808		**	715	183
STA.		TO STA.		
FED. ROAD DIST. NO.	ILLINOIS	FED. AID PROJECT		

CHARLIE J. DECKER, TRUSTEE
5527036

WINIFRED M. MILLER, ET. AL.
5527039



- (205,57,105)RS-2
- ** CHAMPAIGN & DOUGLAS



INLET, TYPE A
W/TYPE 8 GRATE - 1.0 EACH
26.5' RT., STA. 2167+00.00

PIPE CULVERT REMOVAL - 12.6'
18"x12.6' RCCP

REMOVE EXISTING ENTRANCE

PIPE CULVERT, CLASS D, TYPE 1, 15"x98.0'
26.5' RT., STA. 2167+01.00, D.S.F.L. = 671.53
26.5' RT., STA. 2167+99.00, U.S.F.L. = 671.68

INLET, TYPE A
W/TYPE 8 GRATE - 1.0 EACH
26.5' RT., STA. 2168+00.00

PIPE CULVERT, CLASS D, TYPE 1, 15"x46.0'
WITH END SECTION, 15" - 1.0 EACH
26.5' RT., STA. 2168+01.00, D.S.F.L. = 671.70
27.5' RT., STA. 2168+47.00, U.S.F.L. = 671.78

STORM SEWER PROTECTED
CLASS A, 6" - 10.0'

REMOVING CATCH BASINS-1.0 EACH
TYPE C WITH TYPE 8 GRATE
STA. 2168+64.12, 23.08' RT.

CATCH BASIN, TYPE C
W/TYPE 8 GRATE - 1.0 EACH
STA. 2168+60.00, 28.0' RT.

EDMUND F. MITS DARFER AND
ANGELA I. MITS DARFER
5527035

*NOTE: 4" S.S. DISCHARGING FROM RESIDENCE SHALL REMAIN IN PLACE. IF CONSTRUCTION OPERATIONS FOR PROPOSED IMPROVEMENTS CONFLICT WITH THE 4" S.S., THE STORM SEWER SHALL BE RELOCATED TO MAINTAIN FLOW AND SHALL BE CONNECTED TO THE 6" MAIN S.S..

GENETIC RESOURCES INC.
5527041

INCIDENTAL HOT-MIX ASPHALT SURFACING

AGGREGATE SURFACE COURSE, TYPE B

HOT-MIX ASPHALT SURFACE REMOVAL - BUTT JOINT

DRIVEWAY PAVEMENT REMOVAL

PLOT DATE = 8/12/2009
FILE NAME = G:\DWG\WORK\K\PROJECTS\70623-sht1-inter.sec.dgn
USER NAME = ceartocskj

ILLINOIS DEPARTMENT OF TRANSPORTATION
INTERSECTION PLAN SHEET
T.R. 269A/600N &
F.A.P. 808 (IL. RTE. 130)
SECTION (205,57,105)RS-2
CHAMPAIGN & DOUGLAS COUNTIES
SCALE: 1" = 20'
DATE: 07/10/09
DRAWN BY: B.B.P.
CHECKED BY: G.A.E.