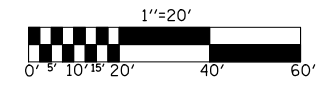


F.A.P. RTE.	SECTION	COUNTY	TOTAL SHEETS	SHEET NO.
808	*	**	715	191

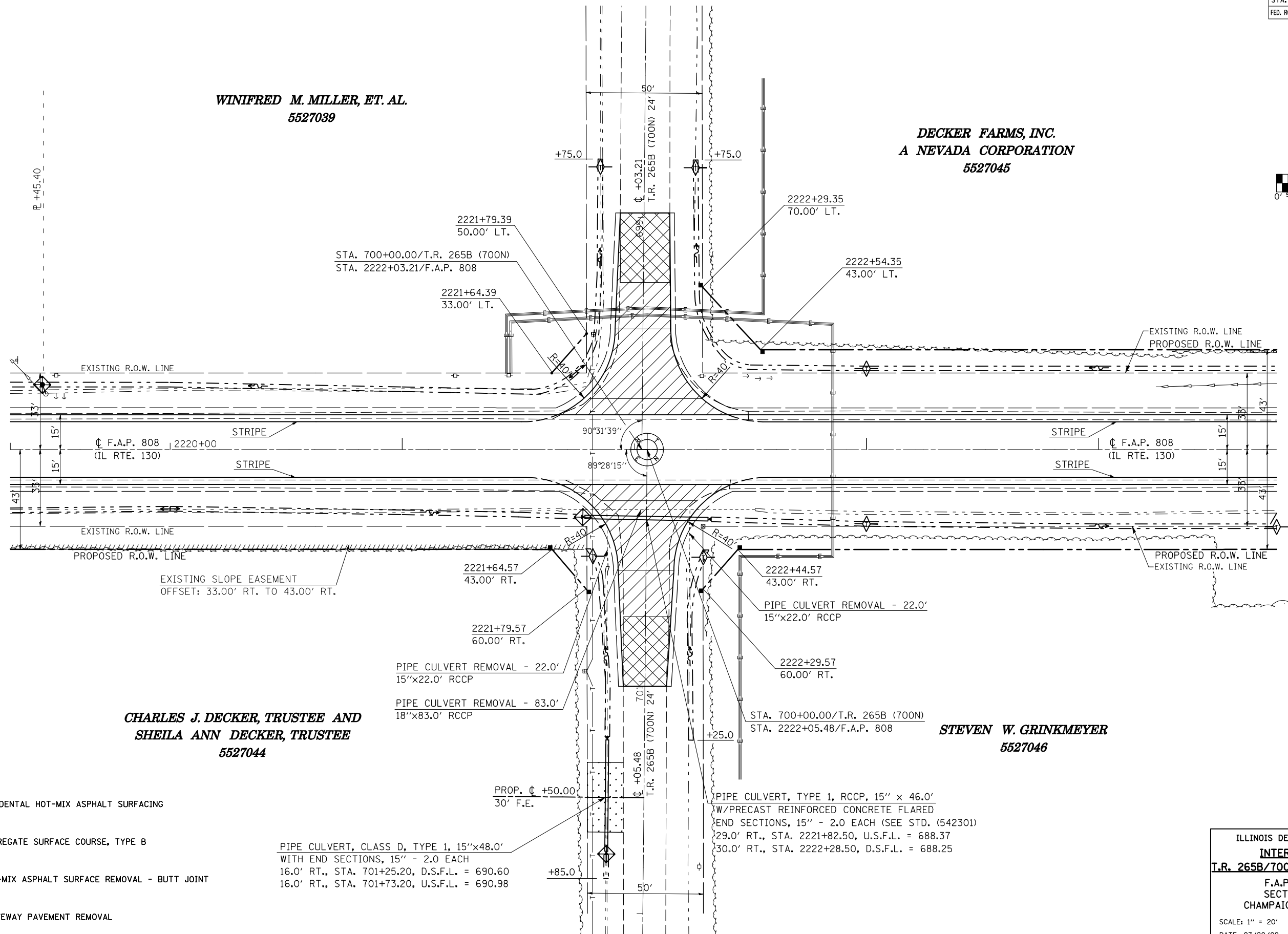
STA.	TO STA.
FED. ROAD DIST. NO.	ILLINOIS FED. AID PROJECT

- (205,57,105)RS-2
- ** CHAMPAIGN & DOUGLAS



WINIFRED M. MILLER, ET. AL.
5527039

DECKER FARMS, INC.
A NEVADA CORPORATION
5527045



CHARLES J. DECKER, TRUSTEE AND
SHEILA ANN DECKER, TRUSTEE
5527044

STEVEN W. GRINKMEYER
5527046

INCIDENTAL HOT-MIX ASPHALT SURFACING

AGGREGATE SURFACE COURSE, TYPE B

HOT-MIX ASPHALT SURFACE REMOVAL - BUTT JOINT

DRIVEWAY PAVEMENT REMOVAL

PIPE CULVERT, CLASS D, TYPE 1, 15"x48.0'
WITH END SECTIONS, 15" - 2.0 EACH
16.0' RT., STA. 701+25.20, D.S.F.L. = 690.60
16.0' RT., STA. 701+73.20, U.S.F.L. = 690.98

PIPE CULVERT, TYPE 1, RCCP, 15" x 46.0'
W/PRECAST REINFORCED CONCRETE FLARED
END SECTIONS, 15" - 2.0 EACH (SEE STD. (542301)
29.0' RT., STA. 2221+82.50, U.S.F.L. = 688.37
30.0' RT., STA. 2222+28.50, D.S.F.L. = 688.25

PLOT DATE = 8/12/2009
FILE NAME = G:\DWG\WORK\IN\PROJECTS\70623-sht1-inter.sec.dgn
USER NAME = ceartocskj

ILLINOIS DEPARTMENT OF TRANSPORTATION
INTERSECTION PLAN SHEET
T.R. 265B/700N & F.A.P. 808 (IL. RTE. 130)
F.A.P. 808 (IL. RTE. 130)
SECTION (205,57,105)RS-2
CHAMPAIGN & DOUGLAS COUNTIES
SCALE: 1" = 20'
DATE: 07/20/09
DRAWN BY: B.B.P.
CHECKED BY: G.A.E.