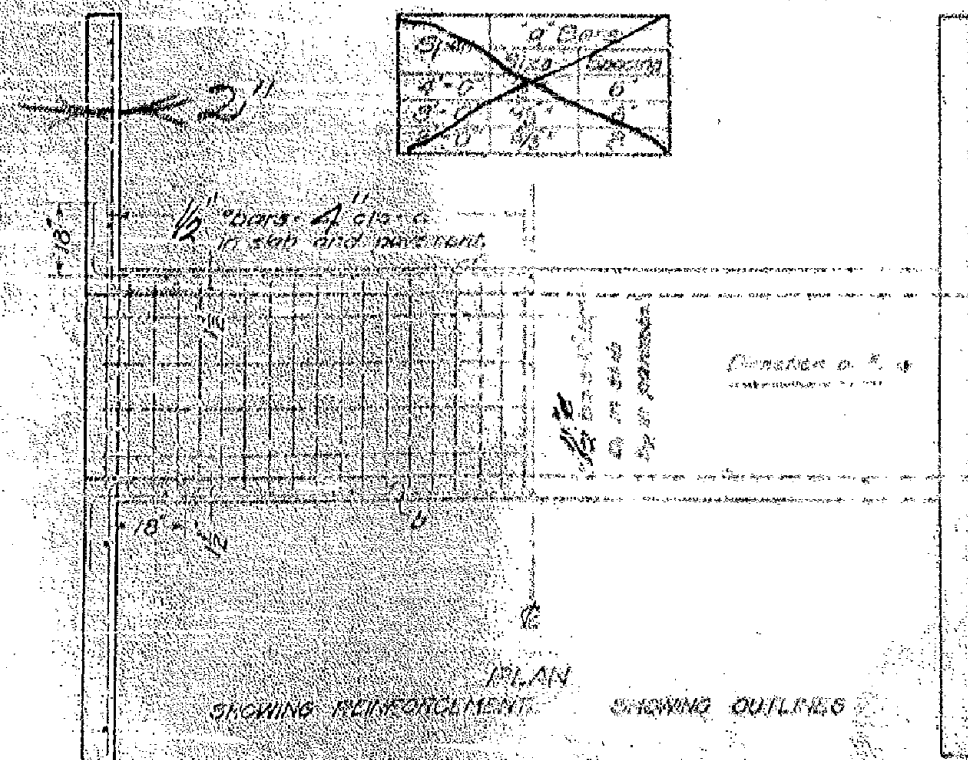
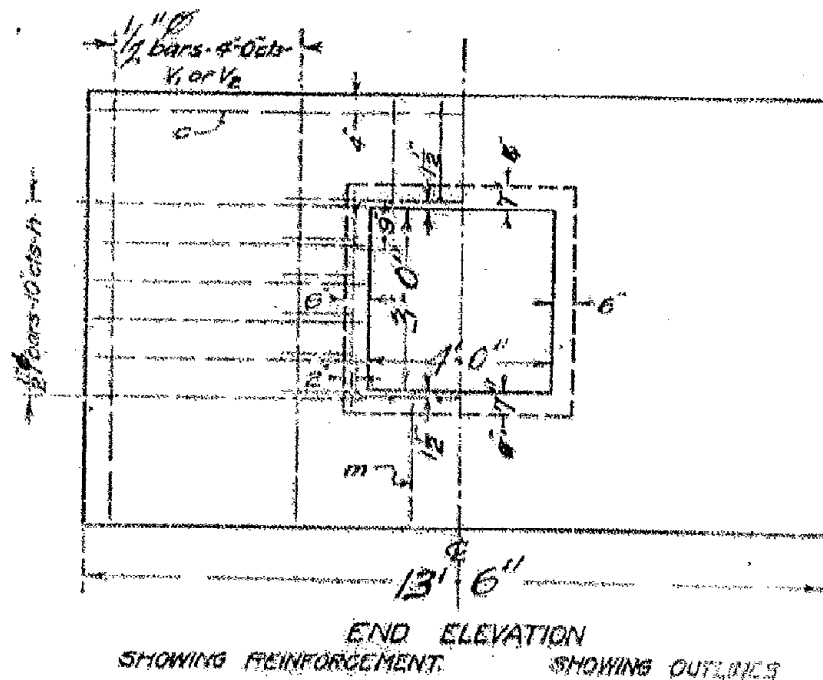
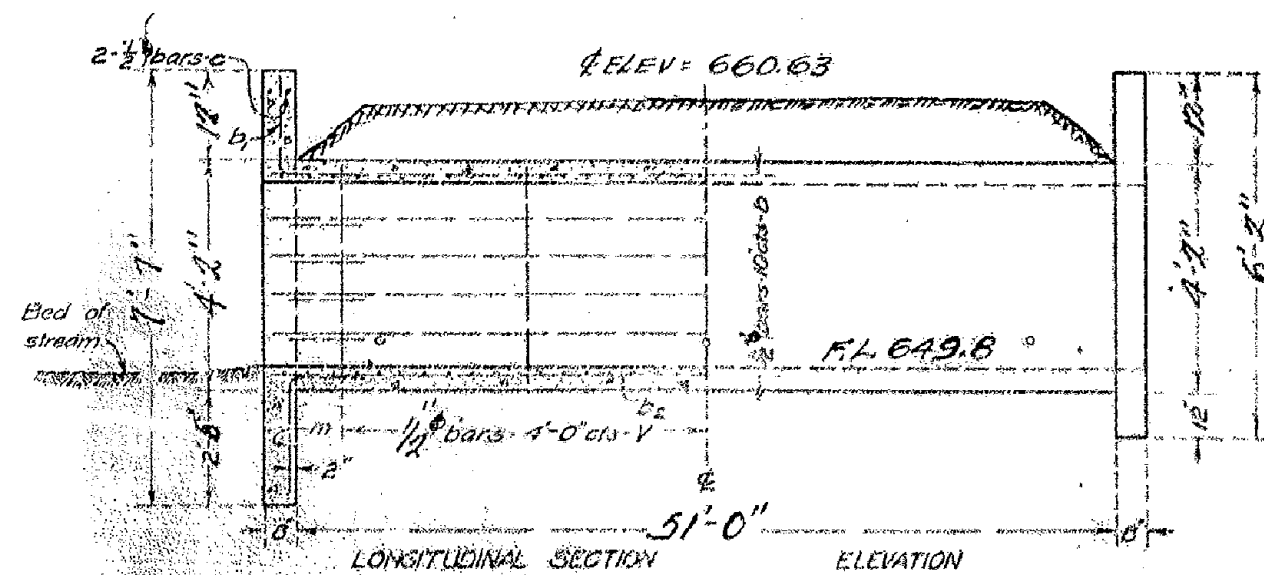


F.A.P. RTE.	SECTION	COUNTY	TOTAL SHEETS	SHEET NO.
808	.	**	715	294
STA.		TO STA.		
FED. ROAD DIST. NO.	ILLINOIS	FED. AID PROJECT		

- (205,57,105)RS-2
- CHAMPAIGN & DOUGLAS

EXISTING STRUCTURE INFORMATION

STATION 1129+95.00



Note.
 Fill over box should be limited to 4'-0".
 Maximum Clearance = 4'-0"
 Use 'm' bars in downstream headwall only.

BILL OF MATERIAL

Bars	No	Size	Length
v	26	1/2"	2'-0"
v	7	1/2"	7'-3"
v	1	1/2"	6'-0"
h	20	1/2"	6'-0"
a	314	1/2"	6'-3"
b	30	1/2"	20'-0"
b1	12	1/2"	17'-6"
b2	12	1/2"	19'-0"
c	2	1/2"	13'-0"
m	2	1/2"	5'-0"
Steel - Lvs			3600
Concrete - Cu Yds			20.7

EXISTING STRUCTURE:
 THE EXISTING STRUCTURE WAS CONSTRUCTED IN 1931 AT STATION 25+21 AS A 4' X 3' CAST-IN-PLACE BOX CULVERT WITH CONCRETE HEADWALLS.
 EXISTING PLAN STATION: 1129+95.30

ORIGINAL CULVERT DESIGN
 S.A. ROUTE 15 SEC 57 MET.
 STA 2521 CHAMPAIGN CO.

PLOT DATE = 8/12/2009
 FILE NAME = G:\DWG\WORK\K\PIWIDOT\CEARLOCK\1129+95\70623-sht-culvert-details.dgn
 USER NAME = ceartlockj