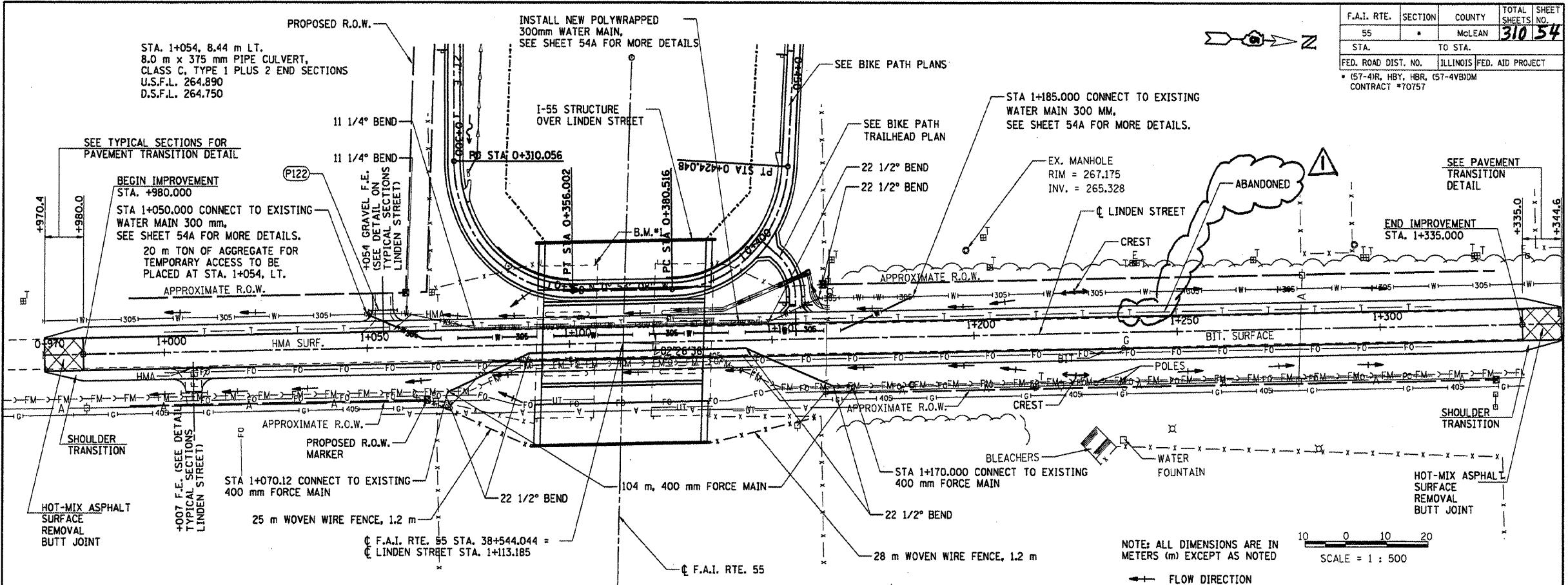
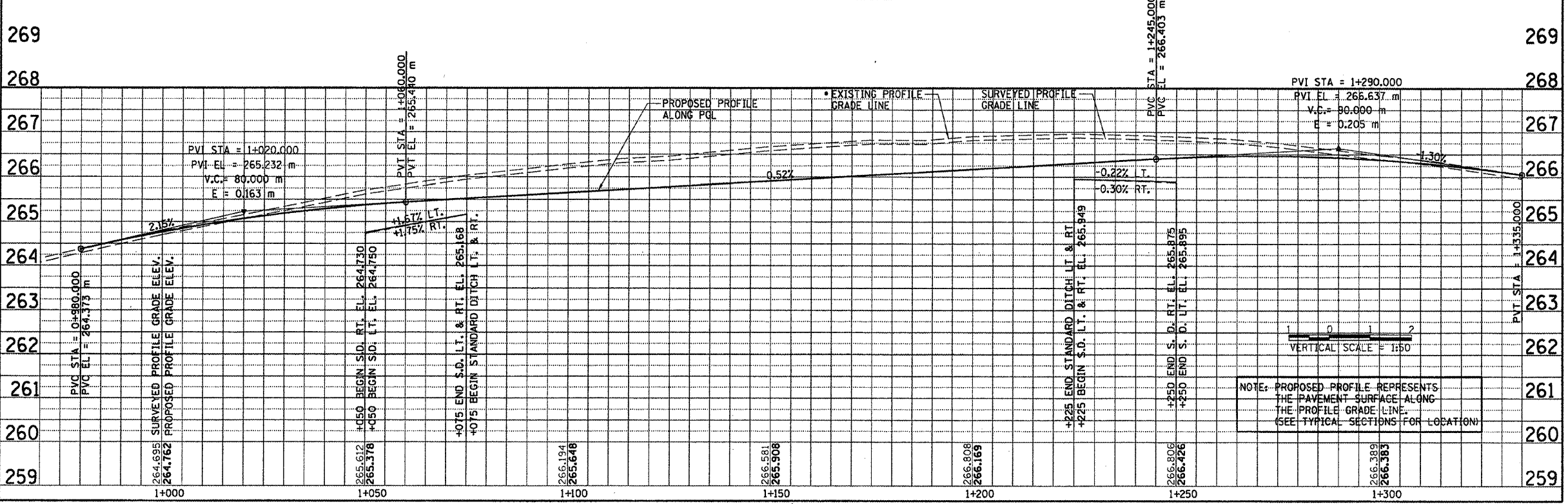


F.A.I. RTE.	SECTION	COUNTY	TOTAL SHEETS	SHEET NO.
55	*	McLEAN	310	54
STA.	TO STA.			
FED. ROAD DIST. NO. ILLINOIS FED. AID PROJECT				
* 157-41R, HBY, HBR, 157-4VB1DM				
CONTRACT #70757				



271	B.M. #1 N.W. WINGWALL COR @ NORTH BOUND 1-55 BRIDGE OVER LINDEN STREET ELEV. = 272.135	B.M. #2 CHISELED "□" IN CTR OF CRASHWALL OF WEST PIER OF SOUTH BOUND 1-55 BRIDGE ELEV = 267.253	B.M. #3 60d IN P.P., RT, STA. 0+913.185 ELEV. = 263.074	B.M. #4 60d IN P.P., STA. 1+358.185, 12 RT. ELEV. = 264.986	271
-----	---	--	---	--	-----



NOTE: PROPOSED PROFILE REPRESENTS THE PAVEMENT SURFACE ALONG THE PROFILE GRADE LINE. (SEE TYPICAL SECTIONS FOR LOCATION)

REvised 10/22/09

LINDEN STREET - STATIONS 1+000 TO 1+299

LAYOUT	JUN	03/08/04
DRAWN	JUN	03/18/04
REVIEWED	DLR	03/18/04