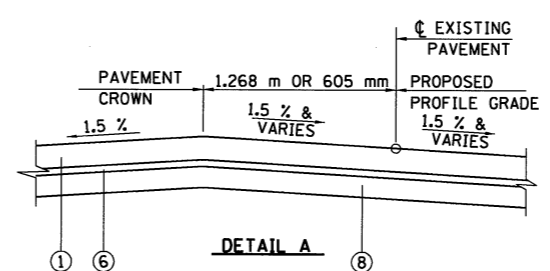
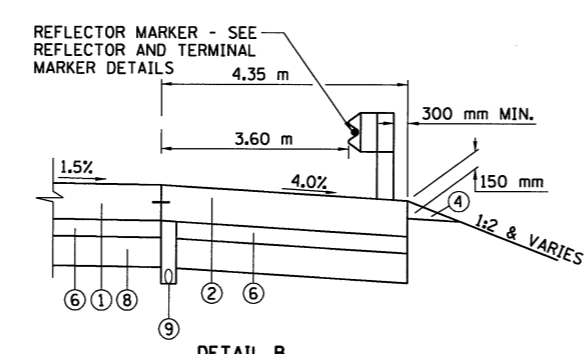
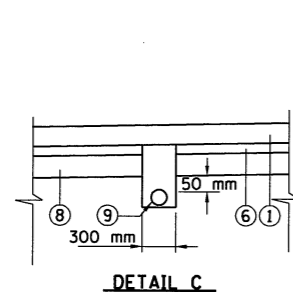


NOTE: TRANSITION FROM 12.126 m PAVEMENT TO 10.8 m PAVEMENT FROM STA. 38+424.582 TO STA. 38+510.878
 • 50 mm PVC CONDUIT BEGINS AT STA. 38+425 (SEE LIGHTING PLANS)



STATION TO STATION	THICKNESS ① ②
36+300.000 TO 37+475.000	330 mm
37+475.000 TO 40+486.000	300 mm

BRIDGE APPROACH OMISSIONS
 STA. 38+511.959 TO STA. 38+520.959
 STA. 38+567.127 TO STA. 38+576.127

BRIDGE OMISSIONS
 STA. 38+520.959 TO STA. 38+567.127
 STA. 37+442.417 TO STA. 37+505.996

- NOTES**
- SEE PAVEMENT SHOULDER TRANSITION DETAIL FOR STA. 38+208.250 TO STA. 38+520.731.
 - THE LONGITUDINAL CONSTRUCTION JOINT AT THE OUTSIDE OF THE MEDIAN SHOULDER SHALL BE SEALED SIMILAR TO THE JOINT AT THE EDGE OF PAVEMENT.
 - 1.5% OR SLOPE VARIES TO MATCH EXISTING EDGE OF PAVEMENT
 - 4% TYPICAL EXCEPT FOR TRANSITION TO 2% IN 30 m AT BRIDGE APPROACH PAVEMENTS, SEE STA. TO STA. STA. 37+381 TO STA. 37+411 SBL
 STA. 37+383 TO STA. 37+413 NBL
 STA. 37+535 TO STA. 37+565 SBL
 STA. 37+537 TO STA. 37+567 NBL
 - CONCRETE BARRIER TO BE CONSTRUCTED FROM STA. 36+000.000 TO STA. 36+450.850
 STA. 36+479.150 TO STA. 40+454.600
 STA. 40+482.900 TO STA. 40+486.000
 STA. 40+486.000 TO STA. 40+648.360 (EXISTING MEDIAN)

- LEGEND**
- CONTINUOUSLY REINFORCED PORTLAND CEMENT CONCRETE PAVEMENT (SEE TABLE 1)
 - PORTLAND CEMENT CONC. SHOULDERS (SEE TABLE 1)
 - NOT USED
 - AGGREGATE SHOULDERS, TYPE B, M TON (150 mm)
 - SUB-BASE GRANULAR MATERIAL, TYPE C
 - STABILIZED SUB-BASE, HOT-MIX ASPHALT, 100 mm
 - NOT USED
 - PROCESSING LIME MODIFIED SOILS 300 mm
 - PIPE UNDERDRAINS 100 mm (SEE DETAIL C)
 - EXISTING PAVEMENT TO REMAIN
 - CONCRETE BARRIER, SEE NOTE [5] (STD 637001)
 - SAWED LONGITUDINAL JOINT OR LONGITUDINAL CONSTRUCTION JOINT, CONTRACTORS OPTION, SEE NOTE [2]
 - LONGITUDINAL CONSTRUCTION JOINT, GROUTED-IN-PLACE TIEBAR, SEE STD. 420001 (TYP.)
 - NOT USED
 - BRIDGE APPROACH PAVEMENT (SPECIAL), SEE BRIDGE APPROACH DETAILS

ILLINOIS DEPARTMENT OF TRANSPORTATION
 F.A.I. 55
 SECTION (57-4)R, HBY, HBR, (57-4VB)DM
 McLEAN COUNTY

PROPOSED TYPICAL SECTIONS I-55

REVISIONS	
NAME	DATE

JOB NO. 94S2063
 DATE 8/17/2009

8/17/2009
 #7152

LAYOUT	04/03/02
DRAWN	03/05/04
REVIEWED	03/18/04