

F.A.I. RTE.	SECTION	COUNTY	TOTAL SHEETS	SHEET NO.
55		MCLEAN	310	55
FED. ROAD DIST. NO. ILLINOIS		FED. AID PROJECT		
* (57-4)R, HBY, HBR, (57-4)BIDM CONTRACT #70757				



10 0 10 20  
SCALE = 1:500

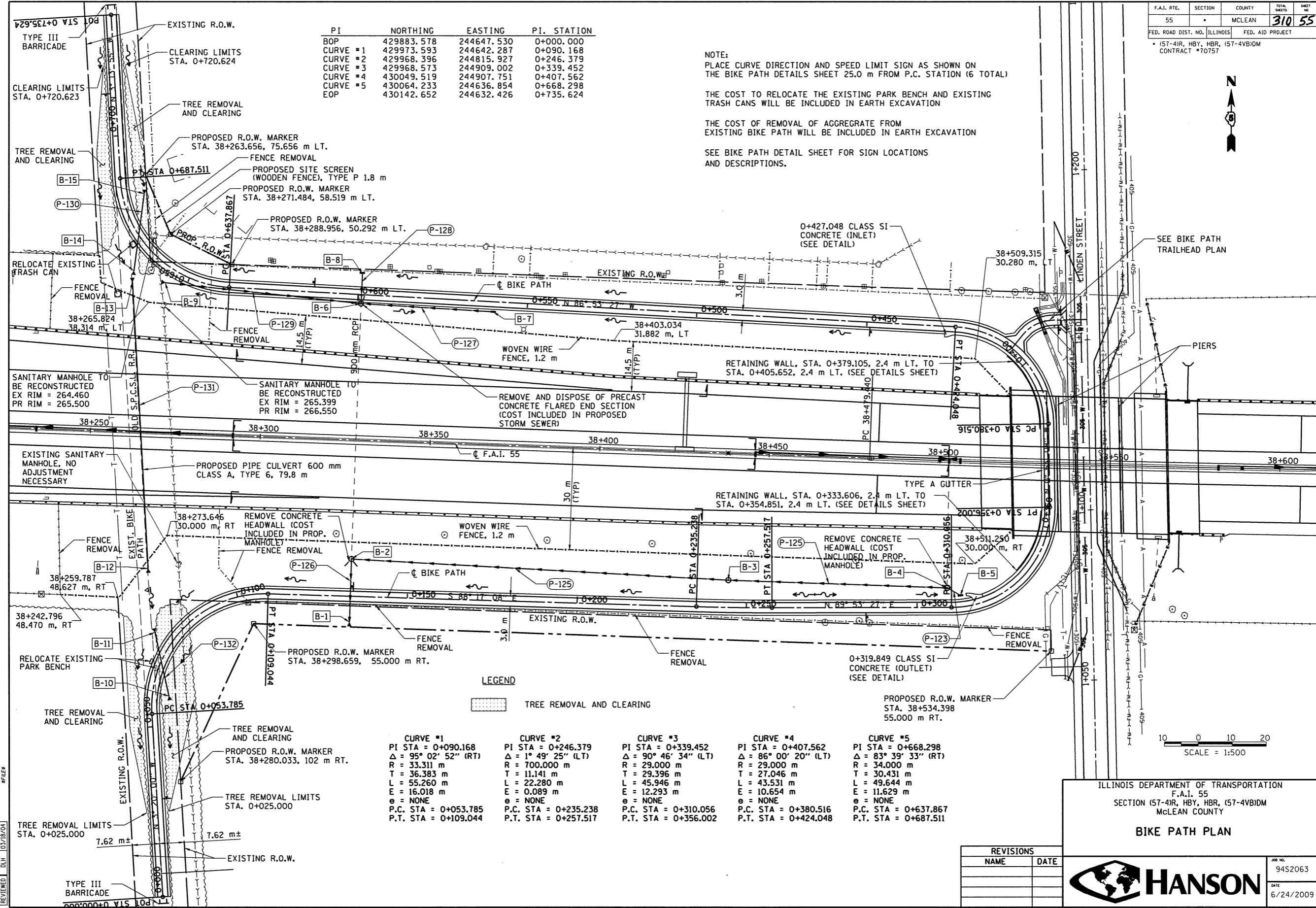
PI	NORTHING	EASTING	PI. STATION
BOP	429883.578	244647.530	0+000.000
CURVE #1	429973.593	244642.287	0+090.168
CURVE #2	429968.396	244815.927	0+246.379
CURVE #3	429968.573	244909.002	0+339.452
CURVE #4	430049.519	244907.751	0+407.562
CURVE #5	430064.233	244636.854	0+668.298
EOP	430142.652	244632.426	0+735.624

NOTE:  
PLACE CURVE DIRECTION AND SPEED LIMIT SIGN AS SHOWN ON THE BIKE PATH DETAILS SHEET 25.0 m FROM P.C. STATION (6 TOTAL)

THE COST TO RELOCATE THE EXISTING PARK BENCH AND EXISTING TRASH CANS WILL BE INCLUDED IN EARTH EXCAVATION

THE COST OF REMOVAL OF AGGREGATE FROM EXISTING BIKE PATH WILL BE INCLUDED IN EARTH EXCAVATION

SEE BIKE PATH DETAIL SHEET FOR SIGN LOCATIONS AND DESCRIPTIONS.



LEGEND

TREE REMOVAL AND CLEARING

CURVE #1	CURVE #2	CURVE #3	CURVE #4	CURVE #5
PI STA = 0+090.168	PI STA = 0+246.379	PI STA = 0+339.452	PI STA = 0+407.562	PI STA = 0+668.298
Δ = 95° 02' 52" (RT)	Δ = 1° 49' 25" (LT)	Δ = 90° 46' 34" (LT)	Δ = 86° 00' 20" (LT)	Δ = 83° 39' 33" (RT)
R = 33.311 m	R = 700.000 m	R = 29.000 m	R = 29.000 m	R = 34.000 m
T = 36.383 m	T = 11.141 m	T = 29.396 m	T = 27.046 m	T = 30.431 m
L = 55.260 m	L = 22.280 m	L = 45.946 m	L = 43.531 m	L = 49.644 m
E = 16.018 m	E = 0.089 m	E = 12.293 m	E = 10.654 m	E = 11.629 m
e = NONE	e = NONE	e = NONE	e = NONE	e = NONE
P.C. STA = 0+053.785	P.C. STA = 0+235.238	P.C. STA = 0+310.056	P.C. STA = 0+380.516	P.C. STA = 0+637.867
P.T. STA = 0+109.044	P.T. STA = 0+257.517	P.T. STA = 0+356.002	P.T. STA = 0+424.048	P.T. STA = 0+687.511

REVISIONS	
NAME	DATE

ILLINOIS DEPARTMENT OF TRANSPORTATION  
F.A.I. 55  
SECTION (57-4)R, HBY, HBR, (57-4)BIDM  
MCLEAN COUNTY



JOB NO.  
9452063  
DATE  
6/24/2009

REVISED	JRH	05/04/04
LAYOUT	RLA	03/09/04
DRAWN	MGD	03/19/04
REVIEWED	DLH	03/18/04

6/24/2009  
#FILES