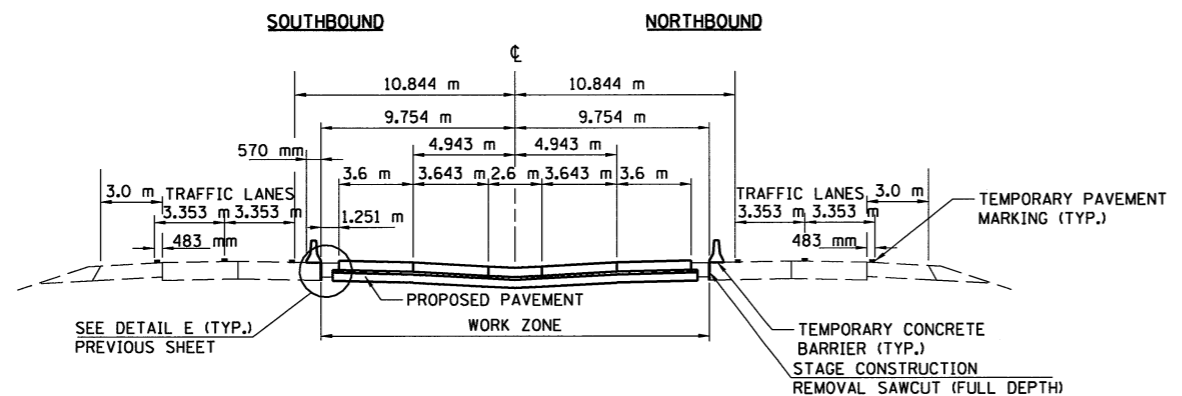
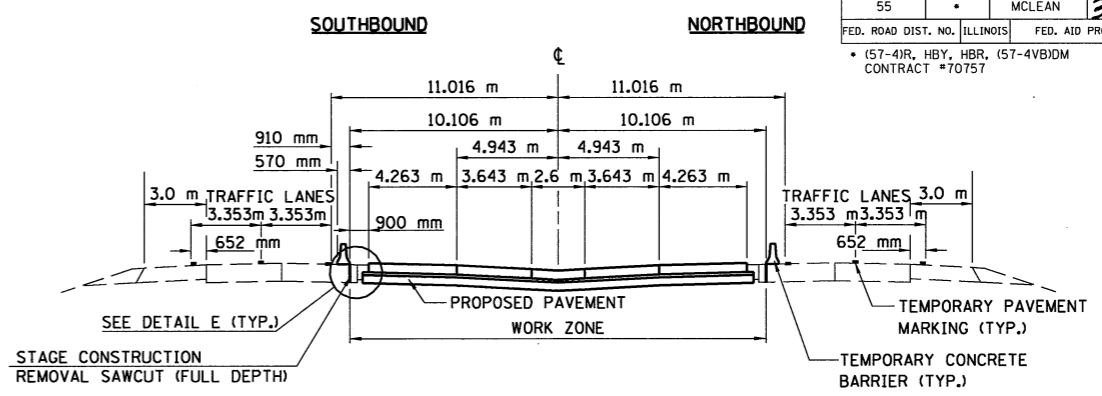


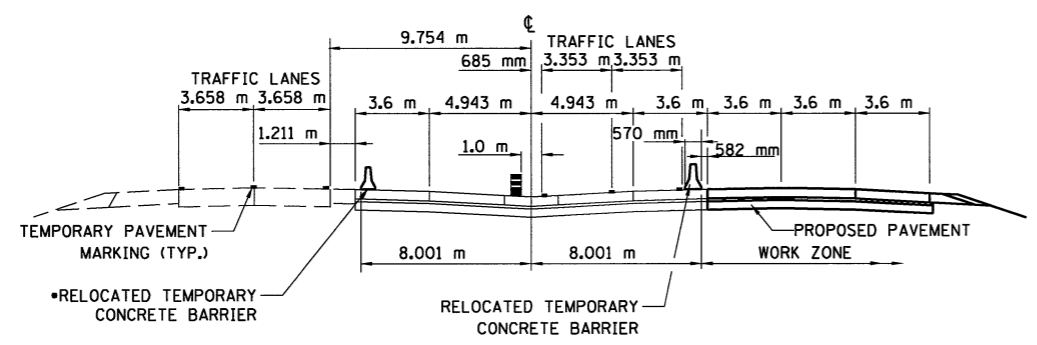
F.A.I. RTE.	SECTION	COUNTY	TOTAL SHEETS	SHEET NO.
55	•	MCLEAN	310	66
FED. ROAD DIST. NO. ILLINOIS		FED. AID PROJECT		
(57-4)R, HBY, HBR, (57-4)BIDM		CONTRACT #70757		



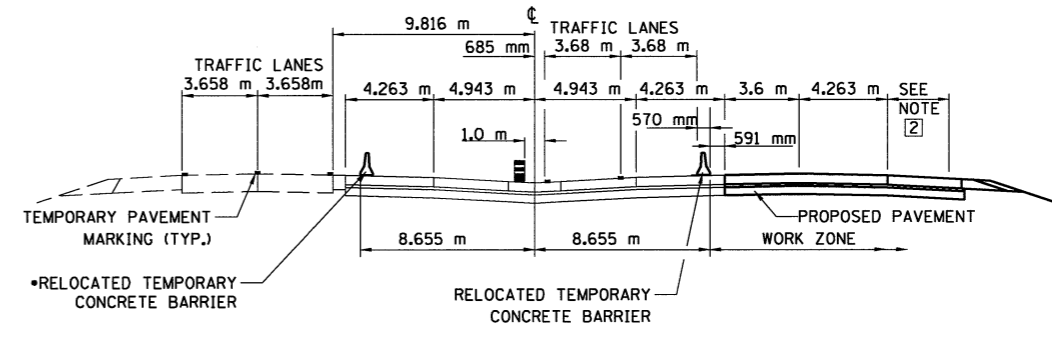
STAGE 1 - NARROW WORK ZONE
STA. 38+526.000 TO STA. 40+275.000 (N.B.L. & S.B.L.)



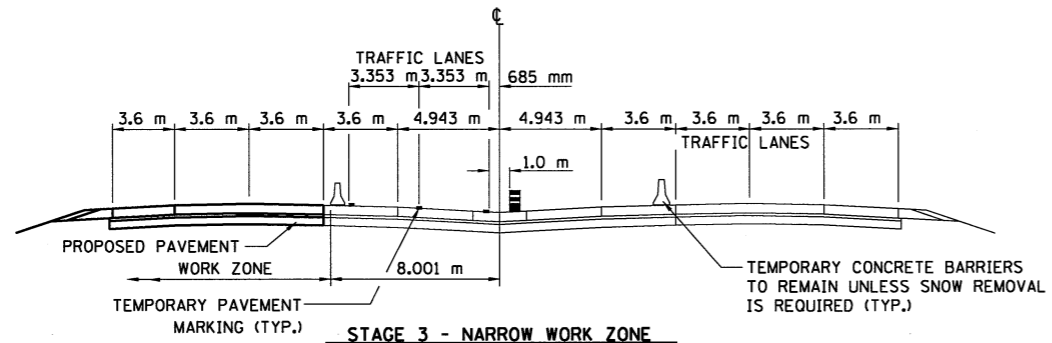
STAGE 1 - WIDE WORK ZONE
STA. 36+500.000 TO STA. 38+526.000 (N.B.L. & S.B.L.)



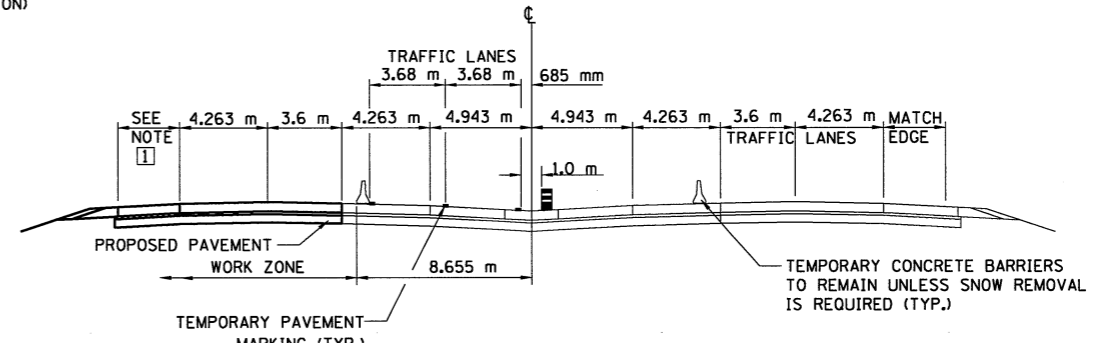
STAGE 2 - NARROW WORK ZONE
STA. 38+526.000 TO STA. 40+486.000 (N.B.L. & S.B.L.)



STAGE 2 - WIDE WORK ZONE
STA. 36+300.000 TO STA. 38+526.000 (N.B.L. & S.B.L.)



STAGE 3 - NARROW WORK ZONE
STA. 38+526.000 TO STA. 40+486.000 (N.B.L. & S.B.L.)



STAGE 3 - WIDE WORK ZONE
STA. 36+300.000 TO STA. 38+526.000 (N.B.L. & S.B.L.)

STAGE 1 - TRANSITION AREAS
STA. 38+482.905 TO STA. 38+526.000 (N.B.L. & S.B.L.)

STAGE 2/3 - TRANSITION AREAS
STA. 38+490.705 TO STA. 38+526.000 (N.B.L. & S.B.L.)

• TEMPORARY CONCRETE BARRIER TO REMAIN IN STAGE 1 LOCATION AT BRIDGE STRUCTURES. (SEE MOT PLAN SHEET FOR TRANSITION)

- NOTES:
- PROPOSED PAVEMENT MATCHES EXISTING PAVEMENT AT 17.069 m LT. FROM STA. 36+300.000 TO STA. 38+208.250. SEE PAVEMENT SHOULDER TRANSITION DETAIL FOR STA. 38+208.250 TO STA. 38+418.953. 4.35 m FROM STA. 38+418.953 TO STA. 38+511.959.
 - PROPOSED PAVEMENT MATCHES EXISTING PAVEMENT AT 17.069 m RT. FROM STA. 36+300.000 TO STA. 38+210.800. VARIES FROM 4.52 m AT STA. 38+210.800 TO 3.6 m AT STA. 38+256.233. 3.6 m FROM STA. 38+256.233 TO STA. 38+526.000

NOTE: CONTRACTOR MAY CONSTRUCT STAGE 3 PRIOR TO CONSTRUCTING STAGE 2.
TEMPORARY CONCRETE BARRIER TO REMAIN IN STAGE 3 LOCATION THROUGH STAGE 4.

REVISIONS	
NAME	DATE

ILLINOIS DEPARTMENT OF TRANSPORTATION
F.A.I. 55
SECTION (57-4)R, HBY, HBR, (57-4)BIDM
MCLEAN COUNTY

**MAINTENANCE OF TRAFFIC
TYPICAL SECTIONS
1-55**

JOB NO. 94S2063
DATE 8/11/2009

8/11/2009
 #FILE#
 LAYOUT J.J.H. 03/02/04
 DRAWN J.J.H. 03/02/04
 REVIEWED D.L.H. 03/18/04