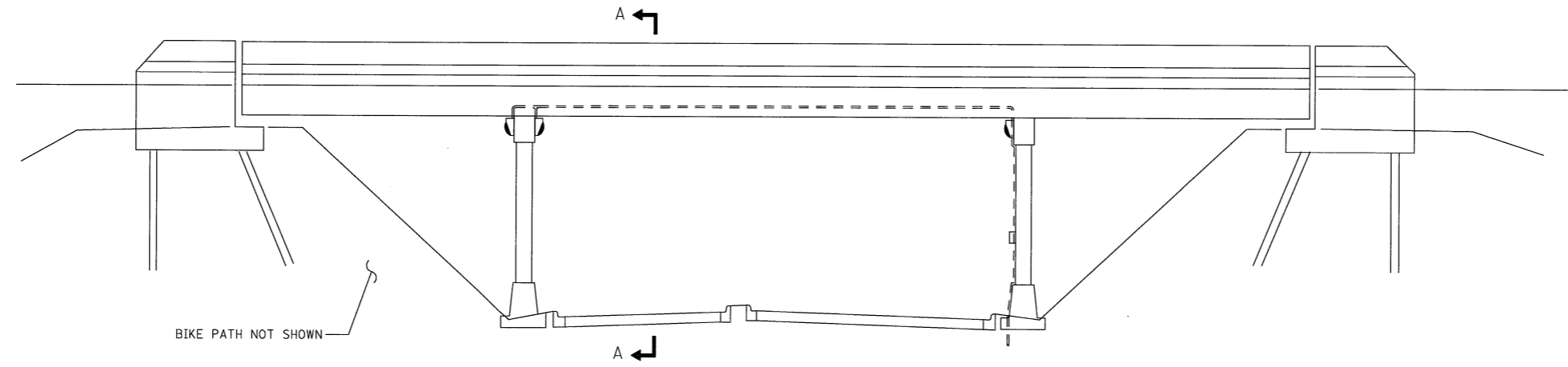
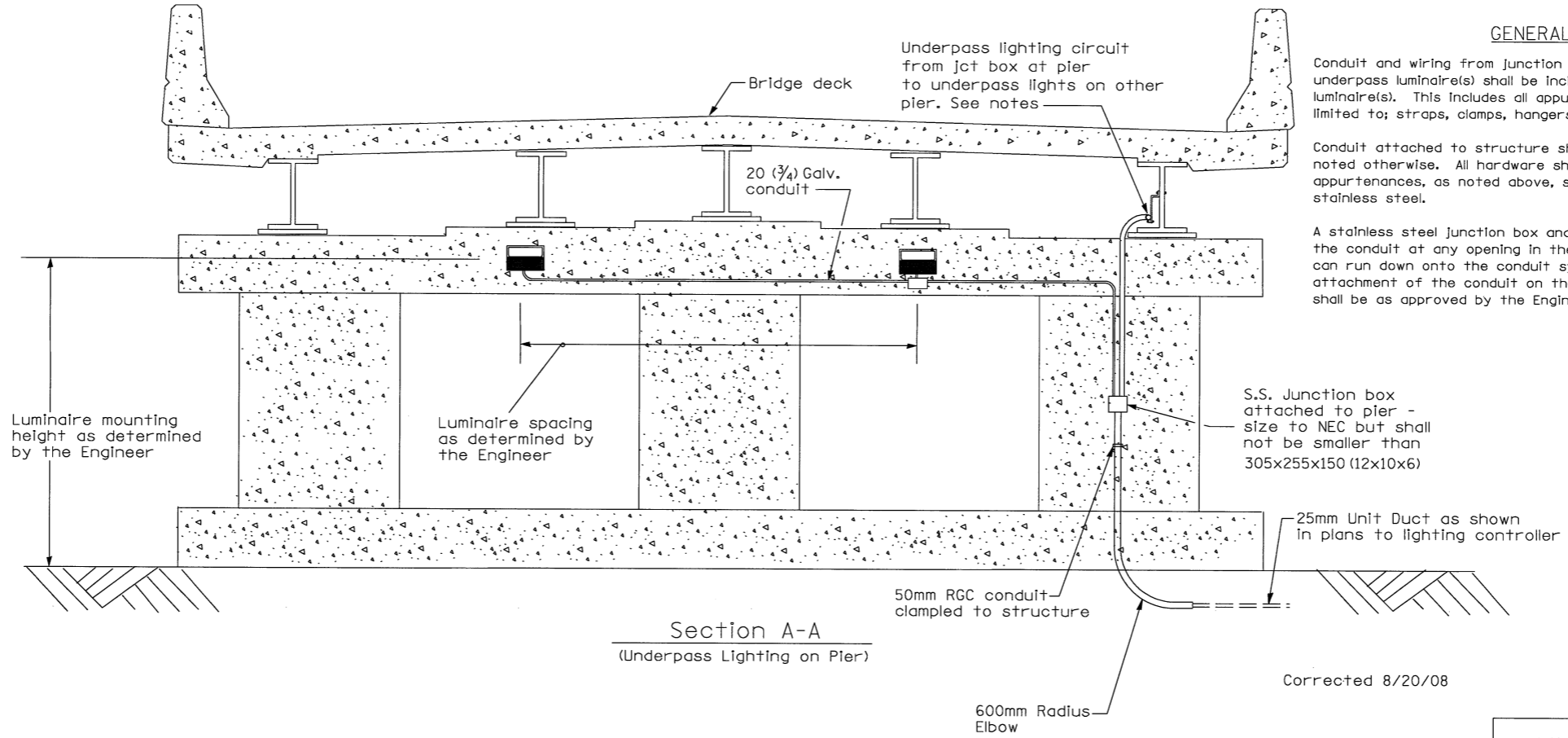


F.A.I. RTE.	SECTION	COUNTY	TOTAL SHEETS	SHEET NO.
55		MCLEAN	310	111
FED. ROAD DIST. NO.	ILLINOIS	FED. AID PROJECT		
* (57-4)R, HBY, HBR, (57-4)B)DM CONTRACT #70757				



OVERPASS ELEVATION  
(Not to Scale)



Section A-A  
(Underpass Lighting on Pier)

GENERAL NOTES

Conduit and wiring from junction box at bridge pier to the underpass luminaire(s) shall be incidental to the cost of the underpass luminaire(s). This includes all appurtenances including, but not limited to; straps, clamps, hangers, fittings, attachments, hardware, etc.

Conduit attached to structure shall be rigid galvanized conduit unless noted otherwise. All hardware shall be stainless steel and all conduit appurtenances, as noted above, shall be hot dip galvanized or stainless steel.

A stainless steel junction box and flex conduit shall be installed in the conduit at any opening in the bridge deck where road salt can run down onto the conduit system. Routing and method of attachment of the conduit on the bridge structure and across piers shall be as approved by the Engineer.

Corrected 8/20/08

UNDERPASS LIGHTING  
OUTSIDE PIERS  
(LINDEN ST.)

REVISIONS	
NAME	DATE
Corrected	8/20/08

JOB NO.  
94S2063  
DATE  
8/21/2009

8/20/2009 #7128

LAYOUT	JWH	
DRAWN	JWH	
REVIEWED	DUH	03/28/04