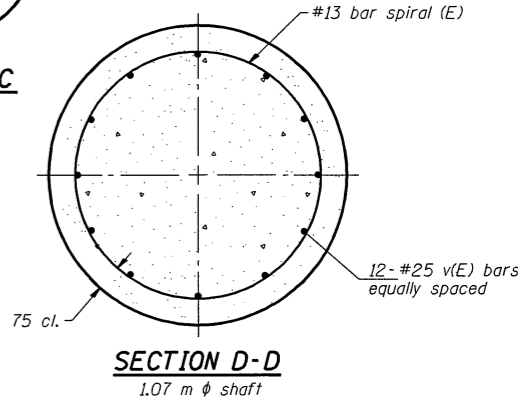
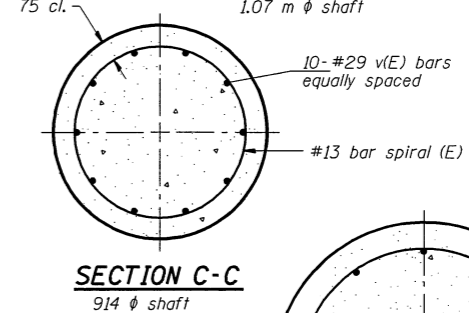
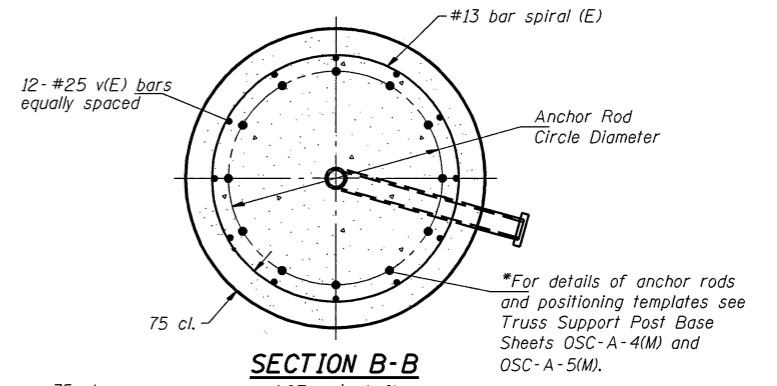
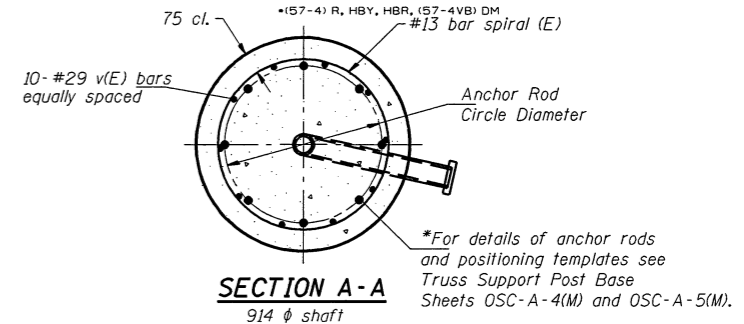
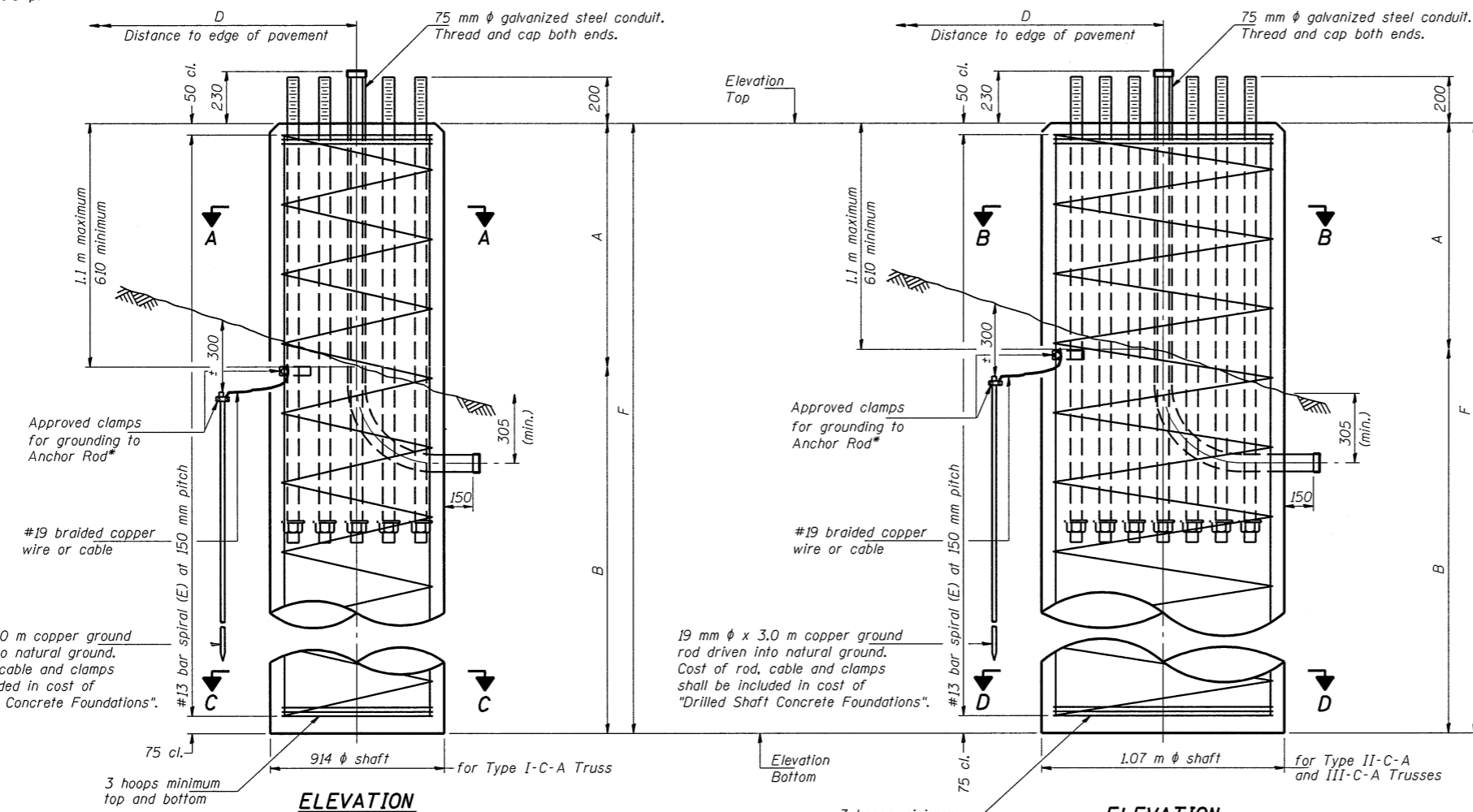


Contract No. 70757
 (57-4) R, HBY, HBR, (57-4VB) DM

*Grind anchor rod to bright finish at ground clamp location before installing clamp.



NOTES:
 The foundation dimensions shown in the Foundation Design Table are based on the presence of mostly cohesive soils with an average Unconfined Compressive Strength (Qu) of at least 120 kPa, which must be determined by previous soil investigations at the jobsite. When other conditions are indicated, the boring data will be included in the plans and the foundation dimensions shown in the Foundation Data Table will be the result of site specific designs.
 If the conditions encountered are different than those indicated, the Contractor shall notify the Engineer to determine if the foundation dimensions need to be modified. If dimensions "B" or "F" are revised by more than 300 mm by the Contractor, "as-built" plans shall be prepared and submitted to the District Bureau of Operations for future reference.
 No sonotubes or decomposable forms shall be used below the lower conduit entrance. Permanent metal forms or other shielding may not be left in place below that elevation without the Engineer's written permission.
 Concrete shall be placed monolithically, without construction joints.
 Backfill shall be placed per Article 502 of Standard Specification and prior to erection of support column.
 A normal surface finish followed by a Bridge Seat Sealer application will be required on concrete surfaces above the lowest elevation 150 mm below finished ground line. Cost included in "Drilled Shaft Concrete Foundation".

Structure Number	Station	Truss Type	Shaft Diameter	Elevation Top	Elevation Bottom	A	B	F	Class SI Concrete Cubic Meters
5C0571055L164.7	37+295	II-C-A	1.07	266.077	259.977	0.900	5.20	6.100	5.5
5C0571055L164.8	37+297	II-C-A	1.07	265.740	260.640	0.900	5.20	6.100	5.5
5C0571055L164.9	37+572.5	II-C-A	1.07	266.760	259.260	0.900	6.60	7.500	6.8

Truss Type	Post Base Sheet	Maximum Cantilever Length (m)	Maximum Total Sign Area (sq m)	Shaft Diameter (m)	"B" Depth (m)	Anchor Rods		Anchor Rod Circle Diameter (mm)
						No.	Diameter (mm)	
I-C-A	OSC-A-4(M)	7.6	15.8	0.92	4.9	8	51	560
II-C-A	OSC-A-5(M)	9.2	15.8	1.07	5.2	12	51	762
II-C-A	OSC-A-5(M)	9.2	31.6	1.07	6.6	12	51	762
III-C-A	OSC-A-5(M)	10.7	15.8	1.07	5.8	12	51	762
III-C-A	OSC-A-5(M)	10.7	23.2	1.07	6.9	12	51	762
III-C-A	OSC-A-5(M)	10.7	37.2	1.07	8.1	12	51	762
III-C-A	OSC-A-5(M)	12.2	37.2	1.07	9.8	12	51	762

NUMBER	REVISION	DATE

SHEET TITLE CANTILEVER SIGN STRUCTURES DRILLED SHAFT ALUMINUM TRUSS & STEEL POST	
PROJECT F.A.I. 55 SECTION (57-4)R, HBY, HBR, (57-4VB)DM McLEAN COUNTY	PROJECT NO. 9450 SCALE DATE 10/08/04 DRAWN BY TFC CHECKED BY MCB DRAWING NO.
COOMBE-BLOXDORF P.C. Engineers/Land Surveyors Springfield, Illinois Design Firm License No. 184-002703	
22 OF 24 SHTS	

7/18/2009 #FILE#BBREV\$