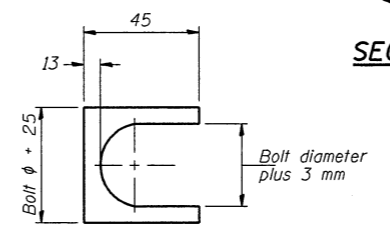
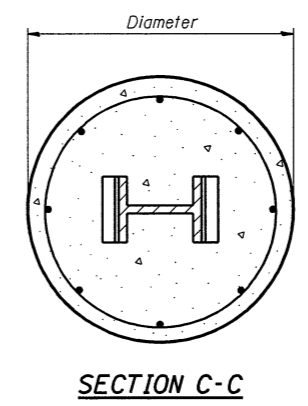
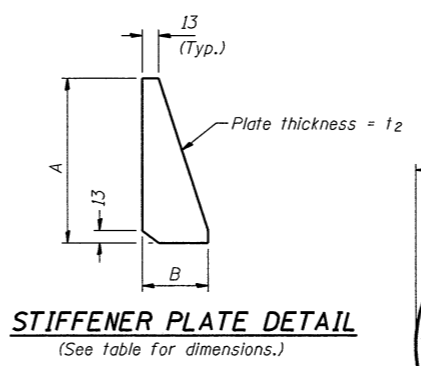
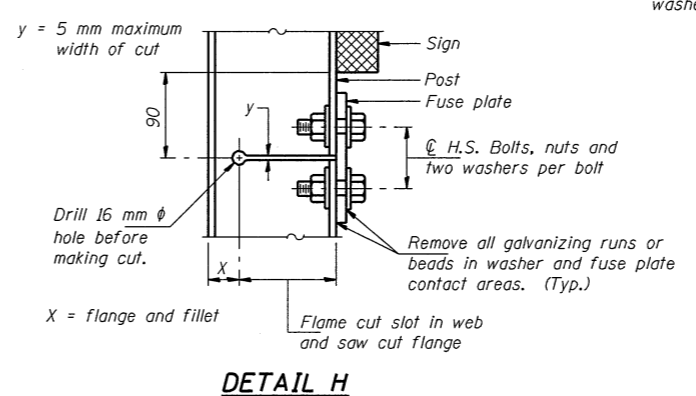
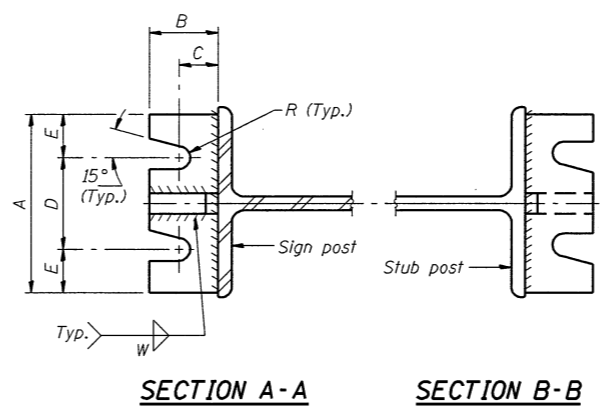
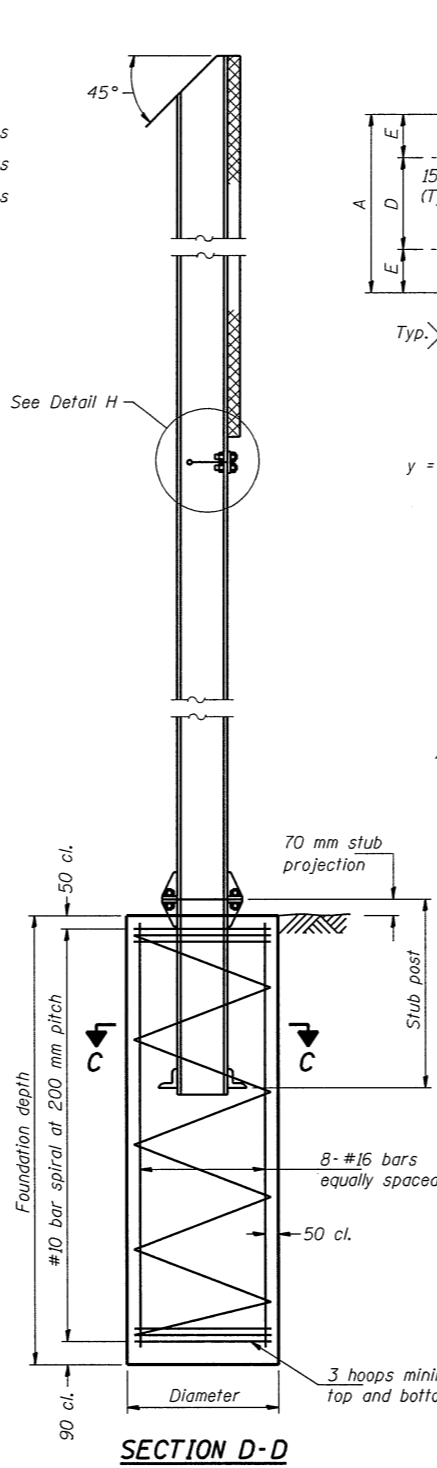
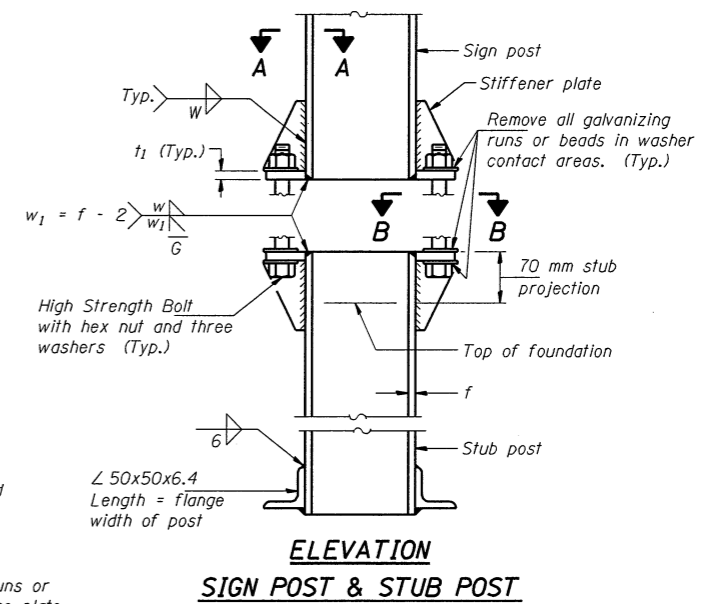


| FUSE PLATE DATA | | |
|-------------------|----|----|
| N = Bolt Diameter | G | H |
| M12 | 50 | 30 |
| M16 | 60 | 30 |
| M20 | 65 | 35 |
| M24 | 75 | 40 |
| M27 | 85 | 45 |

| NUMBER | REVISION | DATE |
|--------|----------|------|
| | | |
| | | |
| | | |
| | | |



Furnish two 0.3 mm thick and two 0.8 mm thick stainless steel or brass (ASTM B36) shims per post.



GENERAL NOTES

MEASUREMENTS: All dimensions are in millimeters (mm) except as noted.

Posts shall be plumbed by using shims with post-to-stub post connection bolts snug tight only. Final tightening of all High Strength Bolts shall be in accordance with Article 727.05 and threads at the junction of the bolt and nut shall be burred or center punched to prevent the nut from loosening.

LOADING: 130 km/h wind with 30% gust factor, normal to sign.

DESIGN STRESSES:
 Structural steel - 138 MPa
 Reinforcing steel - 138 MPa
 Concrete - 10 MPa
 Footing soil pressure - 95 kPa

After fabrication, the post, fuse plate, base plate and upper 150 mm (Minimum) of the stub post shall be hot-dip galvanized in accordance with AASHTO M111. All bolts, nuts and washers shall be hot-dip galvanized in accordance with AASHTO M232.

Work this sheet with Base Sheet BAW-A-2(M).

| SHEET TITLE | | PROJECT NO. |
|--|--|-------------|
| BREAK-AWAY WIDE FLANGE STEEL SIGN POST DETAILS | | 9450 |
| PROJECT | | SCALE |
| F.A.I. 55 SECTION (57-4)R, HBY, HBR, (57-4VB)DM McLEAN COUNTY | | 10/08/04 |
| DRAWN BY | | TFG |
| CHECKED BY | | MCB |
| DRAWING NO. | | |
| COOMBE-BLOXDORF P.C. Engineers / Land Surveyors Springfield, Illinois | | 23 |
| Design Firm License No. 184-002703 | | OF 24 SHTS |