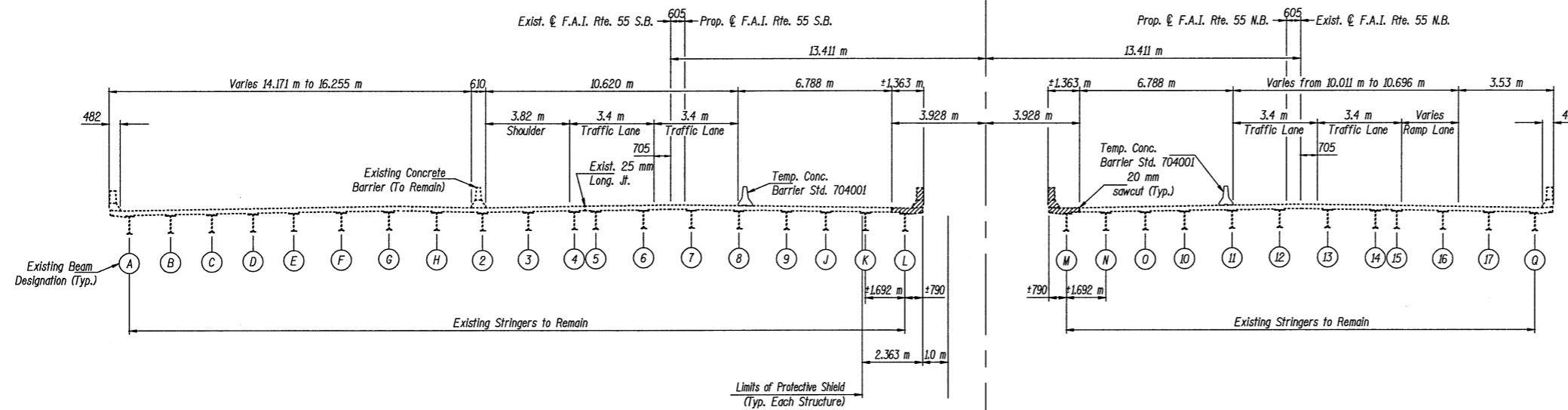


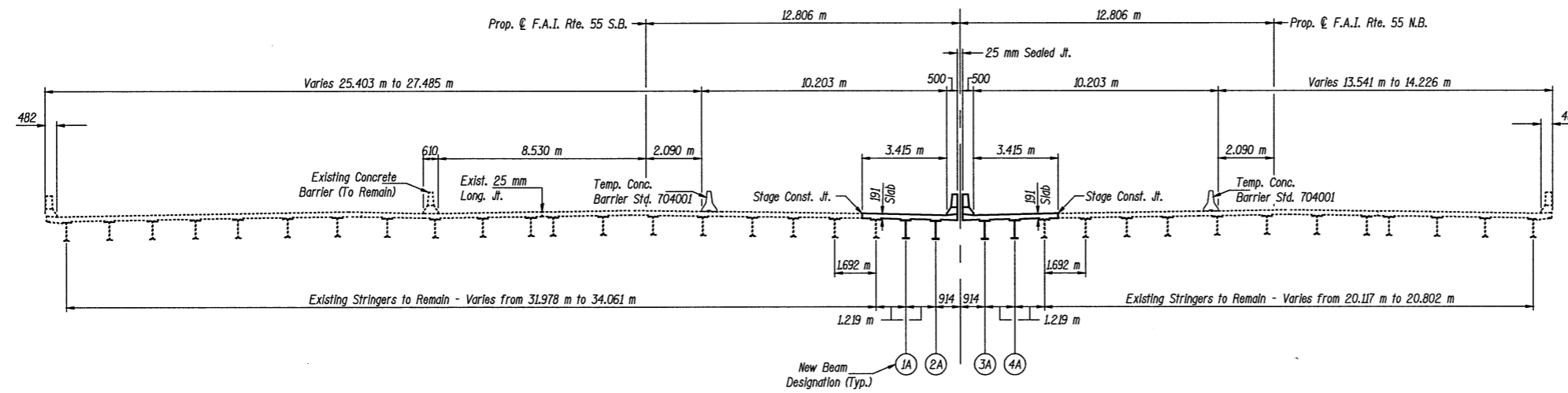
F.A.I. RTE.	SECTION	COUNTY	TOTAL SHEETS	SHEET NO.
55		McLEAN	310	179

FED. ROAD DIST. NO. 7 ILLINOIS FAP
 (57-4)R, HBY, HBR, (57-4VB)DM
 Contract No. 70757



EXIST. CROSS SECTION - SOUTHBOUND
 (SHOWING STAGE 1 REMOVAL)

EXIST. CROSS SECTION - NORTHBOUND
 (SHOWING STAGE 1 REMOVAL)



PROPOSED CROSS SECTION - SOUTHBOUND
 (SHOWING PROPOSED STAGE 1 CONSTRUCTION)

PROPOSED CROSS SECTION - NORTHBOUND
 (SHOWING PROPOSED STAGE 1 CONSTRUCTION)

NOTES

All dimensions measured at Rt. Ls to \bar{C} F.A.I. Rte. 55.
 Hatched areas indicate concrete removal.
 All dimensions are in millimeters (mm) except as noted.

STAGE 1 CONSTRUCTION SEQUENCE

- Concurrent with Stage 1 Roadway Construction
1. Install temporary concrete barrier and direct traffic as shown.
 2. Install Stage 1 protective shield within limits shown in existing cross section and on Sheet 1 of 24.
 3. Proceed with Stage 1 superstructure removal.
 4. Install temporary sheet piling as shown on Sheet 6 of 24 along Bus. U.S. 51 prior to structure excavation at piers.
 5. Remove portions of existing abutments as shown on Sheets 18 and 20 of 24. Widen substructure units as shown on Sheets 17 through 19 of 24.
 6. Proceed with Stage 1 Construction.
 7. Relocate temporary concrete barrier as required for Stage 2 Removal and Construction. See Sheet 4 of 24.

*See Sheets 9 and 10 of 24 for Stage 1 Removal and Construction Limits.

ILLINOIS DEPARTMENT OF TRANSPORTATION	
SHEET TITLE	
STAGE 1 REMOVAL AND CONSTRUCTION	
PROJECT	PROJECT NO.
F.A.I. 55 OVER BUSINESS U.S. 51	08049-5
SECTION 57-4HBR-4 STATION 37+474.206	SCALE
McLEAN COUNTY	07/15/2009
STRUCTURE NO. 057-0024 (N.B.) &	DRAWN BY
STRUCTURE NO. 057-0025 (S.B.)	TFG/CFC
	CHECKED BY
	CME/MCB
DRAWING NO.	
COOMBE-BLOXDORF P.C.	
Engineers / Land Surveyors	
Springfield, Illinois	
Design Firm License No. 184-002703	
	3
	OF 24 SHTS