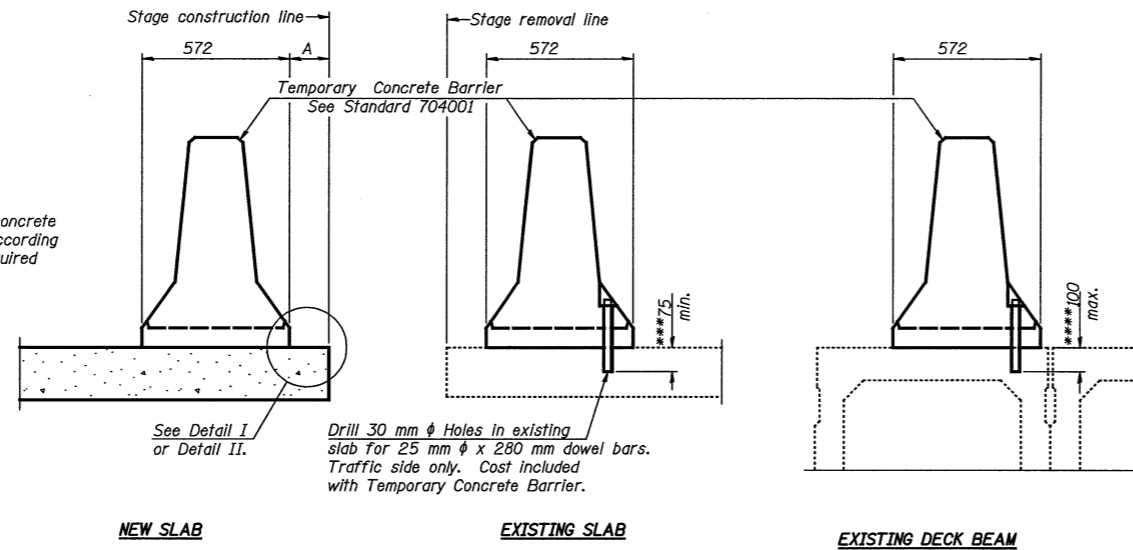


F.A.I. RTE.	SECTION	COUNTY	TOTAL SHEETS	SHEET NO.
55	•	McLEAN	310	181

FED. ROAD DIST. NO. 7 ILLINOIS FAP
 * (57-4)R, HBY, HBR, (57-4VB)DM
 Contract No. 70757

When "A" is 1.07 m or less, the temporary concrete barrier shall be anchored to the new slab according to Detail I or Detail II. No anchorage is required when "A" is greater than 1.07 m.



SECTIONS THRU SLAB OR DECK BEAM

NOTES

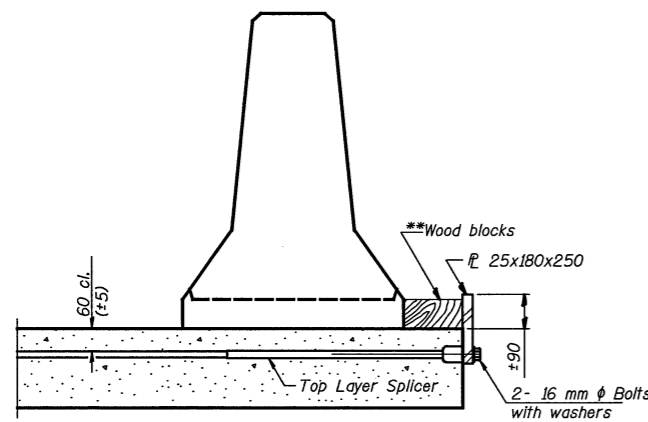
Detail I - With Bar Splicer or Couplers:
 Connect one (1) 25x180x250 steel \bar{L} to the top layer of couplers with 2- 16 mm ϕ bolts screwed to coupler at approximate \bar{C} of each barrier panel.

Detail II - With Extended Reinforcement Bars:
 Connect one (1) 25x180x250 steel \bar{L} to the concrete slab or concrete wearing surface with 2- 16 mm ϕ Expansion Anchors or cast in place Inserts spaced between the top layer of reinforcement at approximate \bar{C} of each barrier panel.

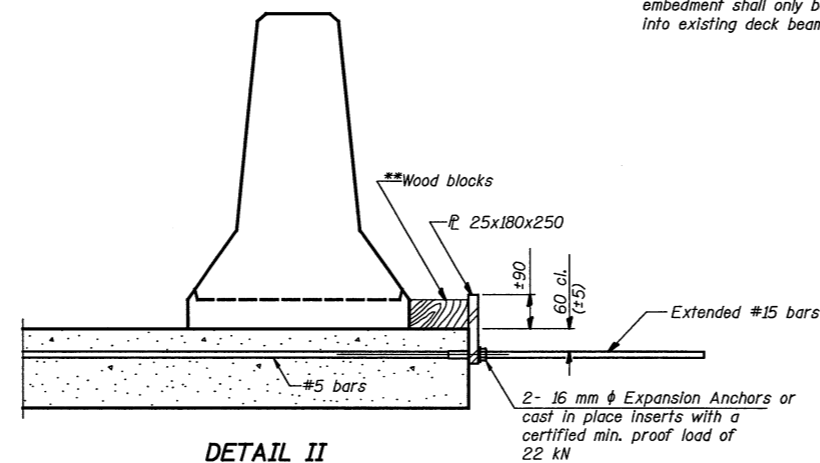
Cost of anchorage is included with Temporary Concrete Barrier. The 25 x180x250 mm plate shall not be removed until stage II construction forms and all reinforcement bars are in place and the concrete is ready to be placed.

*** Dimension shown is minimum required embedment into concrete. If hot-mix asphalt wearing surface is present, minimum embedment shall be in addition to wearing surface depth.

**** If existing deck beam is to remain in place after stage construction, embedment shall only be into wearing surface and not into existing deck beam concrete.

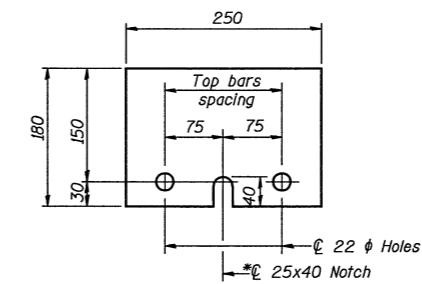


DETAIL I



DETAIL II

**Wood blocks may be omitted when required to provide minimum stage traffic lane width. When the wood blocks are omitted, the concrete barrier shall be in direct contact with the steel retainer plate.



STEEL RETAINER \bar{L} 25x180x250

* Required only with Detail II

All dimensions are in millimeters (mm) except as noted.

ILLINOIS DEPARTMENT OF TRANSPORTATION			
SHEET TITLE TEMPORARY CONCRETE BARRIER FOR STAGE CONSTRUCTION			
PROJECT F.A.I. 55 OVER BUSINESS U.S. 51 SECTION 57-4HBR-4 STATION 37+474.206 McLEAN COUNTY STRUCTURE NO. 057-0024 (N.B.) & STRUCTURE NO. 057-0025 (S.B.)	PROJECT NO. 08049-5	SCALE DATE 07/15/2009	DRAWN BY TFG/CFC
COOMBE-BLOXDORF P.C. Engineers / Land Surveyors Springfield, Illinois Design Firm License No. 184-002703		CHECKED BY CME/MCB	DRAWING NO. 5
			OF 24 SHTS