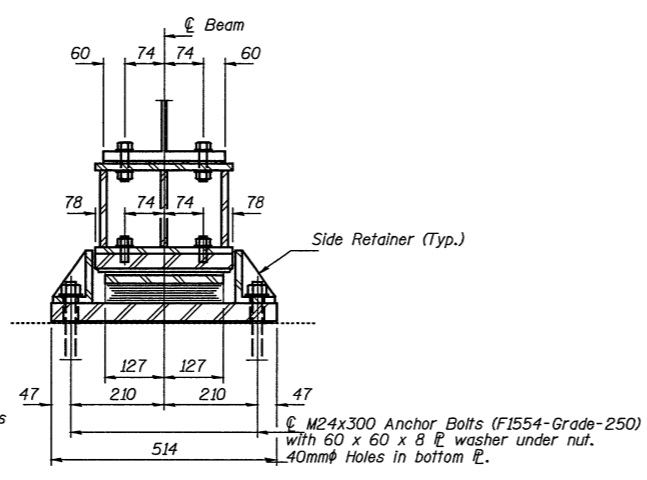


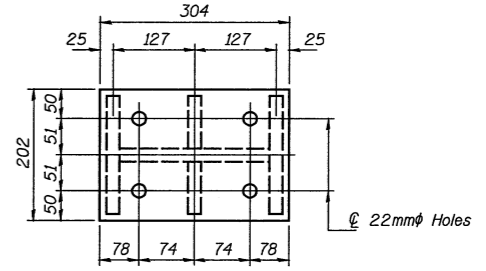
ELEVATION AT ABUTMENT

TYPE II TFE ELASTOMERIC EXP. BRG.

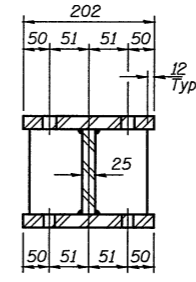


SECTION A-A

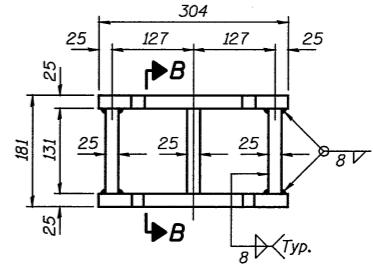
Notes:
 New steel extensions, shim plates and connection bolts are included with Furnishing and Erecting Structural Steel. Prior to ordering any material, the Contractor shall verify in the field all bearing height dimensions.
 Anchor bolts shall be ASTM F1554 all-thread (or an Engineer-approved alternate material) of the grade(s) and diameter(s) specified. ASTM A307 Grade C anchor bolts may be used in lieu of ASTM F1554 Grade 250 (Fy=248MPa). The corresponding specified grade of AASHTO M314 anchor bolts may be used in lieu of ASTM F1554.
 Anchor bolts for Type II bearings shall be placed in holes drilled in the concrete through holes in the bottom bearing plate after members are in place. Side retainers shall be placed after bolts are installed.
 Drilled and set anchor bolts shall be installed according to Article 521.06 of the Standard Specifications.
 Side retainers shall be included in the cost of Elastomeric Bearing Assembly, Type II.
 The 3 mm PTFE sheet shall be bonded directly to the top steel plate with a two-component, medium viscosity epoxy resin, conforming to the requirements of the Federal Specification MMM-A-134, Type I. The bond agent shall be applied on the full area of the contact surfaces.
 Bonding of 3 mm PTFE sheet during vulcanizing process will be permitted provided the process and method of adjusting assembly height is approved by the Engineer.
 All dimensions are in millimeters (mm) except as noted.
 Bearing details shown are to be used at new beam locations only.
 Two 3 mm adjusting shims shall be provided for each bearing in addition to all other plates or shims and placed as shown on bearing details.



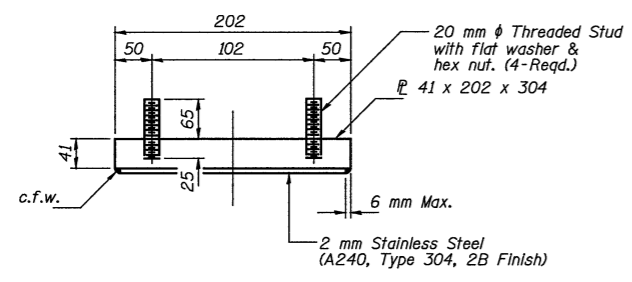
PLAN TOP AND BOTTOM PLATE



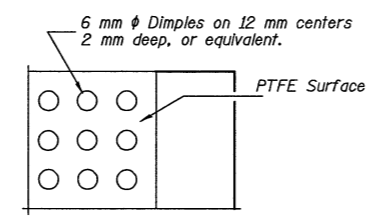
SECTION B-B



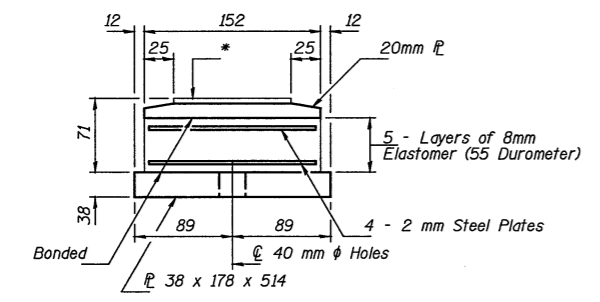
STEEL EXTENSION DETAIL



TOP BEARING ASSEMBLY

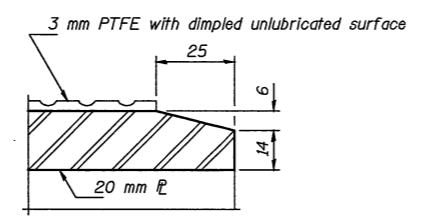


PLAN-PTFE SURFACE

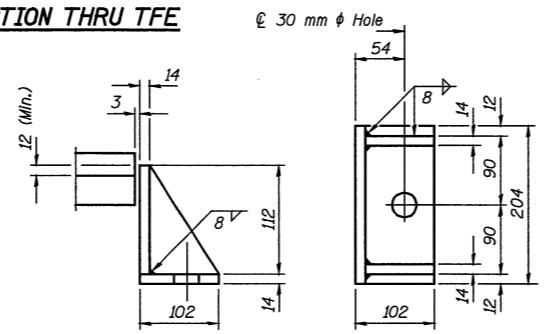


BOTTOM BEARING ASSEMBLY

* 3 mm PTFE dimpled, unlubricated

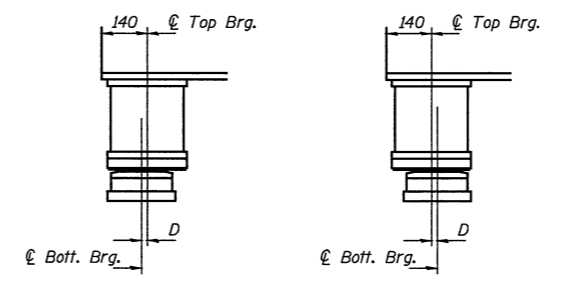


SECTION THRU TFE



SIDE RETAINER

Equivalent rolled angle with stiffeners will be allowed in lieu of welded plates.



BELOW 10°C (Move bott. brg. away from fixed brg.) ABOVE 10°C (Move bott. brg. toward fixed brg.)

SETTING ANCHOR BOLTS AT EXP. BRG.

D = 1mm per each 10m of expansion for every 8°C temp. change from the normal temp. of 10°C.

BILL OF MATERIAL

Item	Unit	Total
Elastomeric Bearing Assembly, Type II	Each	8
Anchor Bolts, M24	Each	16

ILLINOIS DEPARTMENT OF TRANSPORTATION			
SHEET TITLE: BEARING DETAILS AT ABUTMENTS			
PROJECT: F.A.I. 55 OVER BUSINESS U.S. 51 SECTION 57-4HBR-4 STATION 37+474.206 McLEAN COUNTY STRUCTURE NO. 057-0024 (N.B.) & STRUCTURE NO. 057-0025 (S.B.)	PROJECT NO: 08049-5	SCALE: 07/15/2009	DRAWN BY: TFG/CFC
DESIGNED BY: CME/MCB	CHECKED BY: CME/MCB	DRAWING NO.:	15
COOMBE-BLOXDORF P.C. Engineers / Land Surveyors Springfield, Illinois Design Firm License No. 184-002703			OF 24 SHTS