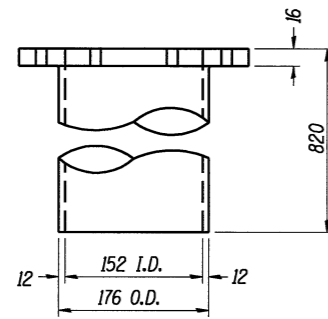
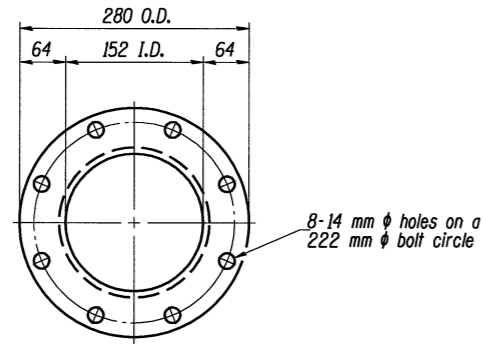
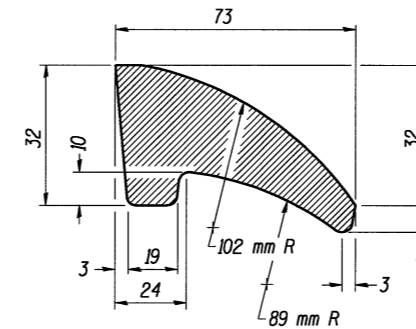


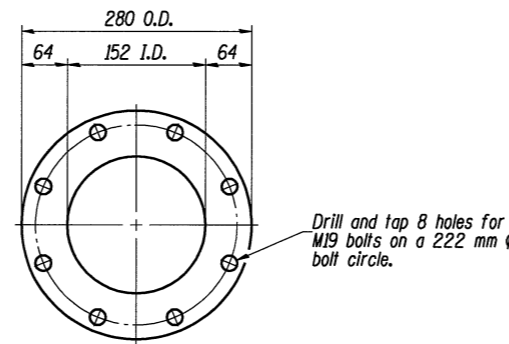
ROUTE NO.	SECTION	COUNTY	TOTAL SHEETS	SHEET NO.
I-55	(57-4HB-3)BR	McLean	310	217
FED. ROAD DIST. NO. 7		ILLINOIS PROJECT		



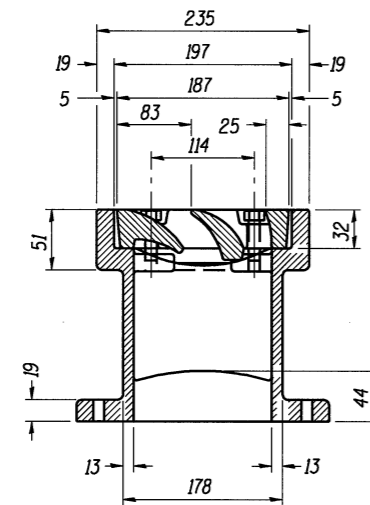
**DOWNSPOUT**



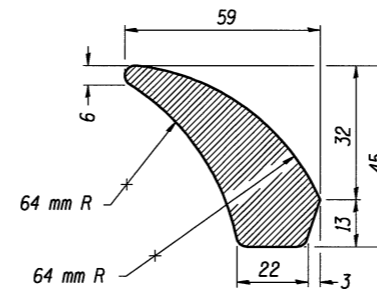
**FIRST VANE DETAIL**



**VIEW C-C**



**SECTION B-B**



**SECOND VANE DETAIL**

Notes: All cast iron parts shall be gray iron conforming to the requirements of AASHTO M 105, Class 35B.  
Bolts, anchor studs, washers and nuts shall conform to the requirements of ASTM A 307 and shall be galvanized according to AASHTO M 232M.  
The grate, frame and downspout shall be galvanized according to AASHTO M 111 and ASTM A 385. Downspouts located on the exterior side of a painted steel fascia beam shall be painted with the finish coat specified for the exterior side of the fascia beam.  
As an alternate, bolts, anchor studs, washers and nuts may be stainless steel according to Article 1006.29(d) of the Standard Specifications.  
Structural steel weldments of equal sections and of the same configuration may be substituted for cast iron. Fillet or full penetration welds shall be used for the weldments. Details shall be submitted to the Engineer for approval. Structural steel weldments shall not be substituted for the cast iron scupper grate. Structural steel frames and downspouts shall be galvanized according to AASHTO M111.  
The Contractor shall take appropriate measures to assure that Protective Coat is not applied to the scupper.  
Cost of the Grate, Frame, Downspout, Anchor Studs, Bolts, Washers and Nuts including complete installation of the scupper shall be paid for at the contract unit price each for Drainage Scupper, DS-33.  
All dimensions are in millimeters (mm) except as noted.  
Alternate fiberglass downspout conforming to ASTM D 2996 with a short-time rupture strength hoop tensile stress of 2070 MPa min. may be used in lieu of cast iron or steel equivalent.

**BILL OF MATERIAL**

ITEM	UNIT	QUANTITY
Drainage Scupper, DS-33	Each	2

Work this sheet with sheet 16 of 31.

**ALTERNATE - CAST IRON DRAINAGE SCUPPER**  
**F.A.I. 55 OVER LINDEN STREET**  
**SECTION (57-4HB-3)BR**  
**STRUCTURE NO. 057-0235 (N.B.) & 057-0236 (S.B.)**  
**MCLEAN COUNTY**  
**STATION 38+544.044**

© Copyright Hanson Professional Services Inc. 2003



JOB NO.

94S2063

DATE

03/26/04

\$TIME\$  
8/16/2009  
\$FILE\$

LAYOUT	G.L.C.	11/5/97
DRAWN	D.A.W.	11/5/97
REVIEWED		